



## 9109 Comar Drive

Walker, LA 70785

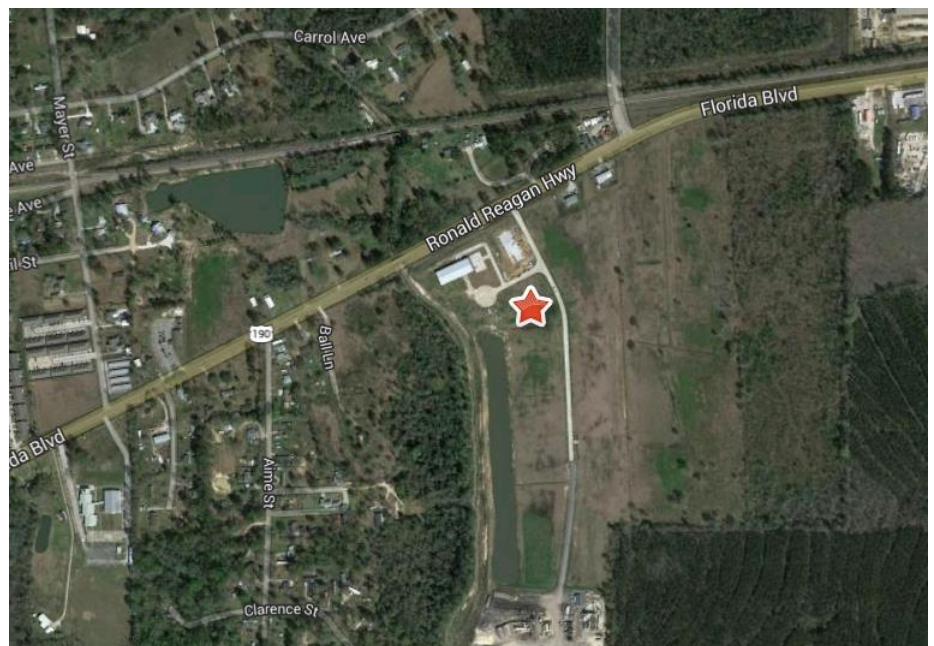
### Property Features

- 8,400 SF total
- 1,100 SF office
- 60x140'
- 17' eave height
- Two 14' rollup doors
- On .91 acres
- New construction
- In Walker Industrial Park

**Lynn Daigle**

225.614.7675

lynn@latterblum.com





SQUARE FOOTAGE	
AREA	SO FT
TOTAL AREA	8400

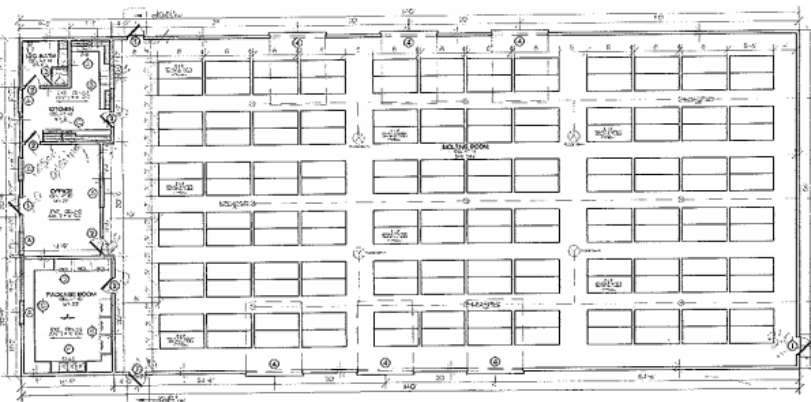
DOOR & WINDOW SCHEDULE	
MARK	DESCRIPTION
1	20' X 7' METAL PUSH
2	12' X 6' 6" FRAMES, MASONRY SET DOOR
3	20' X 6'0" TEMPERED GLASS E-GWDR DOOR
4	12' X 6'0" GLAZED METAL BACKING DOOR
5	4'0" X 4'0" SINGLE HUNG WSA, VINYL

NOTE: GLAZING REQUIRED ON ALL WINDOWS WITHIN 10' OF FINISHED FLOOR, 6'0" OR 5'-6" OR 4'-6" AND ALL GLAZING OVER 6'0" FT. ALL GLASS SHALL BE LEAD FREE.

ALL BEAMS TO COVER WITH 200# RC TABLE 8000S 1/4" OR HEADERS & BRIDGES SPANS

### BUILDING NOTES:

WALLS A MIN. 2 FEET OF UTILITY AND WATER COSETS SHALL HAVE A SMOOTH, HARD, NON-ABSORBENT SURFACE TO A MIN. OF 4 FEET ABOVE THE FLOOR AND BENCH FOR STRUCTURAL BURDEN. THE MATERIALS USED IN SUCH WALLS SHALL BE OF A TYPE THAT IS NOT ADVERSELY AFFECTED BY MOISTURE. SEE CONSTRUCTION OF THIS FORMER BUILDING EXISTING METAL.



FLOOR PLAN  
SCALE: 1/8" = 1'-0"  
ALL ROOM DIMENSIONS ARE AS SHOWN TO NEAREST

MARK	DESCRIPTION
1	DUPLEX RECEPTACLE OUTLET
2	200 VOLT DUPLEX RECEPTACLE OUTLET
3	WATERPROOF RECEPTACLE OUTLET
4	WATERPROOF 250 VOLT OUTLET
5	TRUSS LIGHT (VENT & 2-1/2 BATT. PACK)
6	SINGLE POLE SWITCH
7	DOUBLE POLE SWITCH
8	LIGHT OUTLET
9	FLOOD LIGHT
10	TELEPHONE
11	ROCESSOR SPOT
12	DOOR CHIME
13	TELEVISION
14	SMOKE ALARM
15	HEATING LIGHT
16	4' X 2' BURN IN FLUORESCENT LIGHT

### ELECTRICAL NOTES

ELECTRICAL SHALL BE TO BE 40 CIRCUIT 200 AMPERE UNLOCATED UTILITY.

SEE PAGE TO BE 12-43 CONDUIT CONNECTIONS FROM METER TO PANEL. PANEL SHALL BE 12' X 48" RACK WITH 200 AMPERE DISCONNECT IN ACCORDANCE WITH SECTION 250 OF THE NATIONAL ELECTRICAL CODE.

ALL EXTERIOR GROUND RODS AND BATH EXCEPT TO BE CIRCULAR RAIL CIRCUIT INTERRUPT EQUIPMENT.

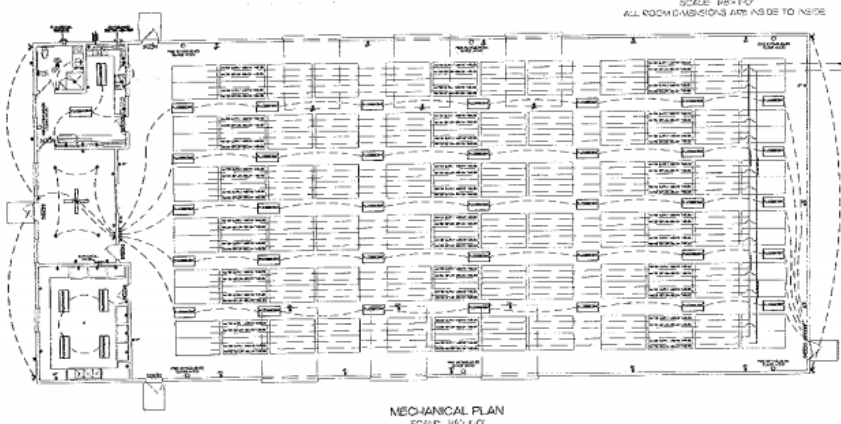
SMOKE DETECTORS SHALL DETECT FOR SMOKE AND CARBON MONOXIDE AND BE WIRED TOGETHER AND CONNECTED TO THE AC POWER SYSTEM.

### PLUMBING NOTES

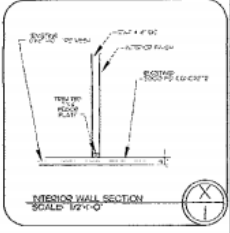
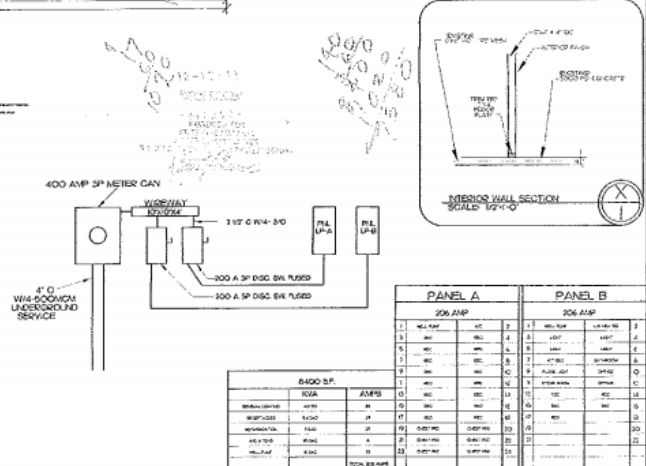
CLEARANCE OF ALL HEAT PRODUCING APPLIANCES TO BE GREATER THAN 18" ABOVE CEILING TO THE SIDE.

### HEATING / AC NOTES

NO AIR CONDITIONING



MECHANICAL PLAN  
SCALE: 1/8" = 1'-0"



PANEL A				PANEL B			
200 AMP				200 AMP			
1	40	100	100	1	40	100	100
2	40	100	100	2	40	100	100
3	40	100	100	3	40	100	100
4	40	100	100	4	40	100	100
5	40	100	100	5	40	100	100
6	40	100	100	6	40	100	100
7	40	100	100	7	40	100	100
8	40	100	100	8	40	100	100
9	40	100	100	9	40	100	100
10	40	100	100	10	40	100	100
11	40	100	100	11	40	100	100
12	40	100	100	12	40	100	100
13	40	100	100	13	40	100	100
14	40	100	100	14	40	100	100
15	40	100	100	15	40	100	100
16	40	100	100	16	40	100	100
17	40	100	100	17	40	100	100
18	40	100	100	18	40	100	100
19	40	100	100	19	40	100	100
20	40	100	100	20	40	100	100
21	40	100	100	21	40	100	100
22	40	100	100	22	40	100	100
23	40	100	100	23	40	100	100
24	40	100	100	24	40	100	100
25	40	100	100	25	40	100	100
26	40	100	100	26	40	100	100
27	40	100	100	27	40	100	100
28	40	100	100	28	40	100	100
29	40	100	100	29	40	100	100
30	40	100	100	30	40	100	100

Lynn Daigle  
225.614.7675  
lynn@latterblum.com

LICENSED IN LOUISIANA. NO WARRANTY OR REPRESENTATION, EXPRESS OR IMPLIED, IS MADE AS TO THE ACCURACY OF THE INFORMATION CONTAINED HEREIN, AND THE SAME IS SUBMITTED SUBJECT TO ERRORS, OMISSIONS, CHANGE OF PRICE, RENTAL OR OTHER CONDITIONS, PRIOR SALE, LEASE OR FINANCING, OR WITHDRAWAL WITHOUT NOTICE, AND OF ANY SPECIAL LISTING CONDITIONS IMPOSED BY OUR PRINCIPALS NO WARRANTIES OR REPRESENTATIONS ARE MADE AS TO THE CONDITION OF THE PROPERTY OR ANY HAZARDS CONTAINED THEREIN ARE ANY TO BE IMPLIED.

10455 Jefferson Highway, Suite 200  
Baton Rouge, LA 70809 USA  
225.295.0800  
[www.latterblum.com](http://www.latterblum.com)