

MERCER
COMMERCIAL

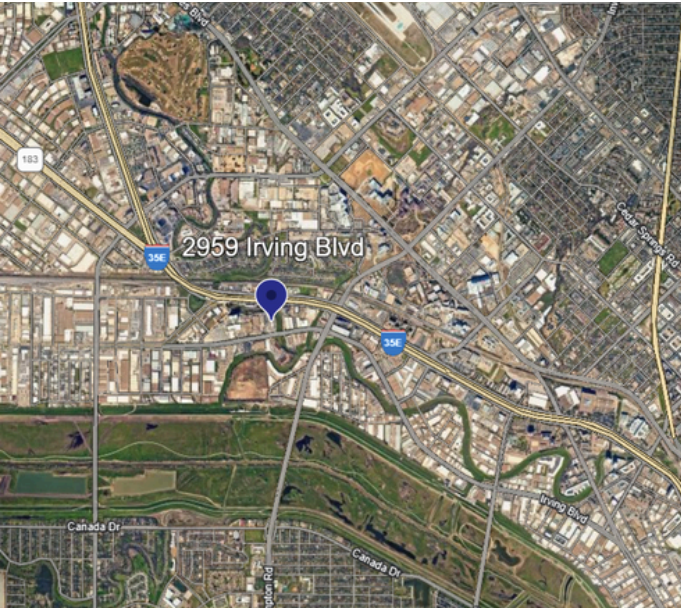


COMPANY
REAL ESTATE

FOR SUBLEASE

28,112 SF ON 4.81 AC

2959 IRVING BOULEVARD, DALLAS, TX 75247



PROPERTY FEATURES

- Available SF: 28,112
- Land Area: 4.81 AC
- 15' 6" Clear Height
- 18 Grade Level Doors (12' x 14')
- 9 Truck Bays | 1 Wash Bay
- Conferencing Facility
- Fenced Lot with Signage
- **Industrial Outside Storage**

THOMAS MERCER

Associate

(972) 974-6240

tmercer@mercerc-company.com

JEREMY MERCER

Senior Vice President

(214) 682-3447

jeremy@mercerc-company.com

Mercer Company
2461 N Stemmons Fwy, Dallas, TX 75207

mercerc-company.com

28,112 SF ON 4.81 AC

2959 IRVING BOULEVARD, DALLAS, TX 75247



THOMAS MERCER

Associate

(972) 974-6240

tmercerc@mercerc-company.com

JEREMY MERCER

Senior Vice President

(214) 682-3447

jeremy@mercerc-company.com

The information contained herein has been given to us by the owner of the property or other sources we deem reliable. We have no reason to doubt its accuracy, but we do not guarantee it. All information should be verified before purchase or lease.

Mercer Company
2461 N Stemmons Fwy, Dallas, TX 75207

mercerc-company.com