

# SEC S. BUTTONWILLOW AVE. & E. DINUBA AVE. REEDLEY, CA



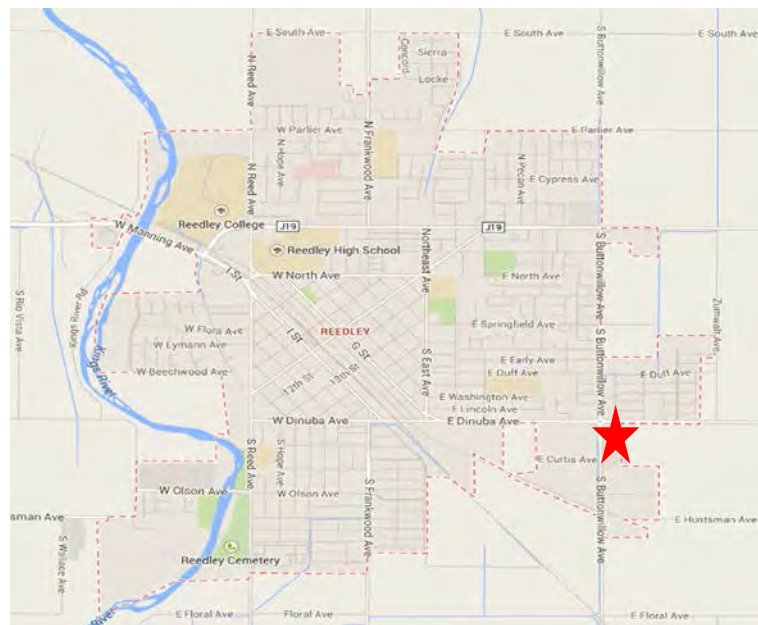
LAND FOR SALE  
±96,423 SF

COMMERCIAL/INDUSTRIAL LOT



## PROPERTY FEATURES

TOTAL SQUARE FEET	±96,423 SF (2.2 Acres)
APN	370-240-059 ±38,333 SF 370-240-045 ±32,670 SF 370-240-050 ±25,420 SF
GENERAL PLAN FOR SITE	Limited Industrial/Commercial
CURRENT ZONING	Light Industrial
PROPOSED ZONING	Commercial/Retail
UTILITIES	City Water, Sewer & Stormdrain stubbed to the property.
IMPROVEMENTS	Site is improved with sidewalk, curb, gutter, street lights and stormdrain
SALES PRICE	Contact Broker



For more information, please contact:

**JEFF LAURITZEN**  
Associate Director  
(559) 433-3540  
Jeff.lauritzen@paccra.com  
Lic. #01035392

**RICK AMERINE**  
Senior Director  
(559) 433-3541  
rick.amerine@paccra.com  
Lic. #00551583

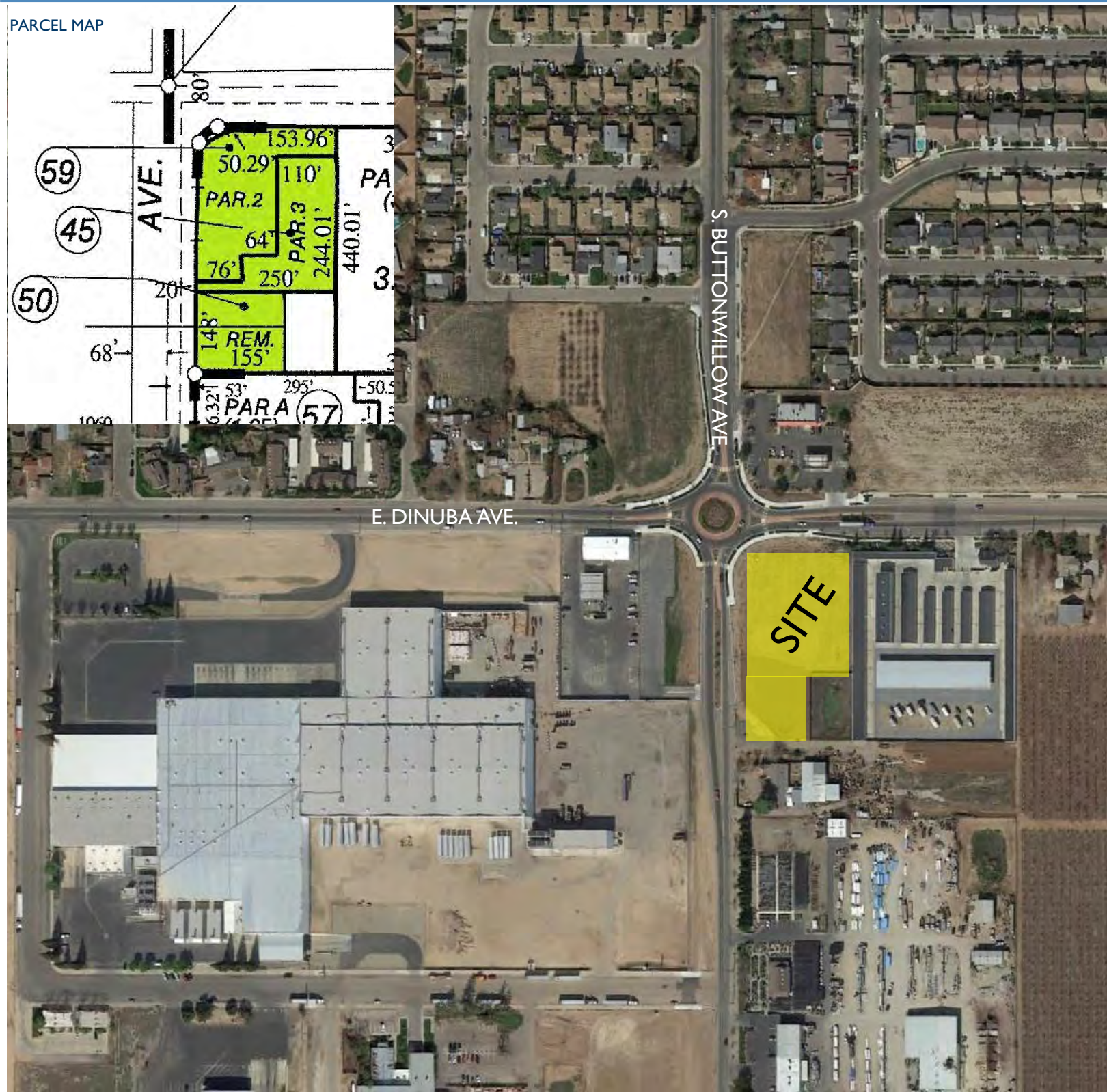
**PACCOM REALTY ADVISORS, INC.**  
Lic. #01919464  
9 River Park Place East, Ste. 101  
Fresno, CA 93720  
www.paccra.com

The depiction in the included photograph of any person, entity, sign, logo or property, other than Cushman & Wakefield's (C&W) client and the property offered by C&W, is incidental only, and is not intended to connote any affiliation, connection, association, sponsorship or approval by or between that which is incidentally depicted and C&W or its client. This listing shall not be deemed an offer to lease, sublease or sell such property; and, in the event of any transaction for such property, no commission shall be earned by or payable to any cooperating broker except if otherwise provided pursuant to the express terms, rates and conditions of C&W's agreement with its principal, if, as and when such commission (if any) is actually received from such principal. (A copy of the rates and conditions referred to above with respect to this property is available upon request.)

# SEC OF S. BUTTONWILLOW AVE. & E. DINUBA AVE., REEDLEY CA

## Land for Sale

±96,423 SF  
AVAILABLE  
FOR SALE



AERIAL MAP

For more information, please contact:

**JEFF LAURITZEN**  
Associate Director  
(559) 433-3540  
Jeff.lauritzen@paccra.com  
Lic. #01035392

**RICK AMERINE**  
Senior Director  
(559) 433-3541  
rick.amerine@paccra.com  
Lic. #00551583

**PACCOM REALTY ADVISORS, INC.**  
Lic. #01919464  
9 River Park Place East, Ste. 101  
Fresno, CA 93720  
www.paccra.com

The depiction in the included photograph of any person, entity, sign, logo or property, other than Cushman & Wakefield's (C&W) client and the property offered by C&W, is incidental only, and is not intended to connote any affiliation, connection, association, sponsorship or approval by or between that which is incidentally depicted and C&W or its client. This listing shall not be deemed an offer to lease, sublease or sell such property; and, in the event of any transaction for such property, no commission shall be earned by or payable to any cooperating broker except if otherwise provided pursuant to the express terms, rates and conditions of C&W's agreement with its principal, if, as and when such commission (if any) is actually received from such principal. (A copy of the rates and conditions referred to above with respect to this property is available upon request.)



# SEC OF S. BUTTONWILLOW AVE. & E. DINUBA AVE., REEDLEY CA

## Land for Sale

±96,423 SF  
AVAILABLE  
FOR SALE



For more information, please contact:

**JEFF LAURITZEN**  
Associate Director  
(559) 433-3540  
Jeff.lauritzen@paccra.com  
Lic. #01035392

**RICK AMERINE**  
Senior Director  
(559) 433-3541  
rick.amerine@paccra.com  
Lic. #00551583

**PACCOM REALTY ADVISORS, INC.**  
Lic. #01919464  
9 River Park Place East, Ste. 101  
Fresno, CA 93720  
www.paccra.com

The depiction in the included photograph of any person, entity, sign, logo or property, other than Cushman & Wakefield's (C&W) client and the property offered by C&W, is incidental only, and is not intended to connote any affiliation, connection, association, sponsorship or approval by or between that which is incidentally depicted and C&W or its client. This listing shall not be deemed an offer to lease, sublease or sell such property; and, in the event of any transaction for such property, no commission shall be earned by or payable to any cooperating broker except if otherwise provided pursuant to the express terms, rates and conditions of C&W's agreement with its principal, if, as and when such commission (if any) is actually received from such principal. (A copy of the rates and conditions referred to above with respect to this property is available upon request.)