

SEQ HIGHWAY 99 & ROBERTSON BLVD CHOWCHILLA, CA



**CUSHMAN &
WAKEFIELD**

PACIFIC
COMMERCIAL REALTY ADVISORS
INDEPENDENTLY OWNED AND OPERATED

FOR SALE OR LEASE

±2,479 SF FORMER FAST FOOD RESTUARANT

FORMER BURGER KING



PROPERTY FEATURES

ADDRESS	SEQ Hwy 99 & Robertson Blvd., Chowilla, CA (in frontof the SaveMart)
APN	014-260-026
TOTAL PROPERTY	±0.61 Acres, ±26,572 SF
BUILDING SF	±2,479 SF
PROPERTY TYPE	Commercial Retail
ZONING	Retail
SEATS	42
PARKING	±47 Stalls

REMAINING FF&E AT CHOWCHILLA

- Complete beverage system including:
 - Self-Serve drink station with 12-head Cornelius dispenser
 - Manitowoc cuber and 300 lb storage bin with twin ice chutes and remote condenser
 - 10-head Cornelius drop-in-counter dispensing unit with 300 lbs ice storage capacity
 - Everpure water filter system
- Drive thru expediting table
- Wall mounted, 5-sleeve cup dispenser
- 2, 4-hole under-counter cup dispensers (1at front counter and 1at DT)
- 3-compartment stainless steel w/ pre-rinse unit and spray head
- Wall mounted "Smart Shelf" system (Double unit)
- 1-compartment stainless steel prep sink w/ drain board
- 1 "hands-free" hand sink
- 1 wall mounted hand sink with faucets
- 2 fully operational hood systems with Ansul
- 4 fully operational HVAC units
- 1 fully operational tankless waterheater
- Kool star cooler/freezer walk-in combo unit
- Complete Dining room décor package
- 2 Fire extinguishers (1 type K-I & 1 BC)

For more information, please contact:

RICK AMERINE
Senior Director
(559) 433 3541
rick.amerine@paccra.com
Lic. #00551583

PACCOM REALTY ADVISORS, INC.
Lic. #01919464
9 River Park Place East, Ste. 101
Fresno, CA 93720
www.paccra.com

The depiction in the included photograph of any person, entity, sign, logo or property, other than Paccom Realty Advisors,' (Paccra) client and the property offered by Paccra, is incidental only, and is not intended to connote any affiliation, connection, association, sponsorship or approval by or between that which is incidentally depicted and Paccra or its client. This listing shall not be deemed an offer to lease, sublease or sell such property; and, in the event of any transaction for such property, no commission shall be earned by or payable to any cooperating broker except if otherwise provided pursuant to the express terms, rates and conditions of Paccra's agreement with its principal, if, as and when such commission (if any) is actually received from such principal. (A copy of the rates and conditions referred to above with respect to this property is available upon request.) 06323140514

SEQ HWY 99 & ROBERTSON BLVD

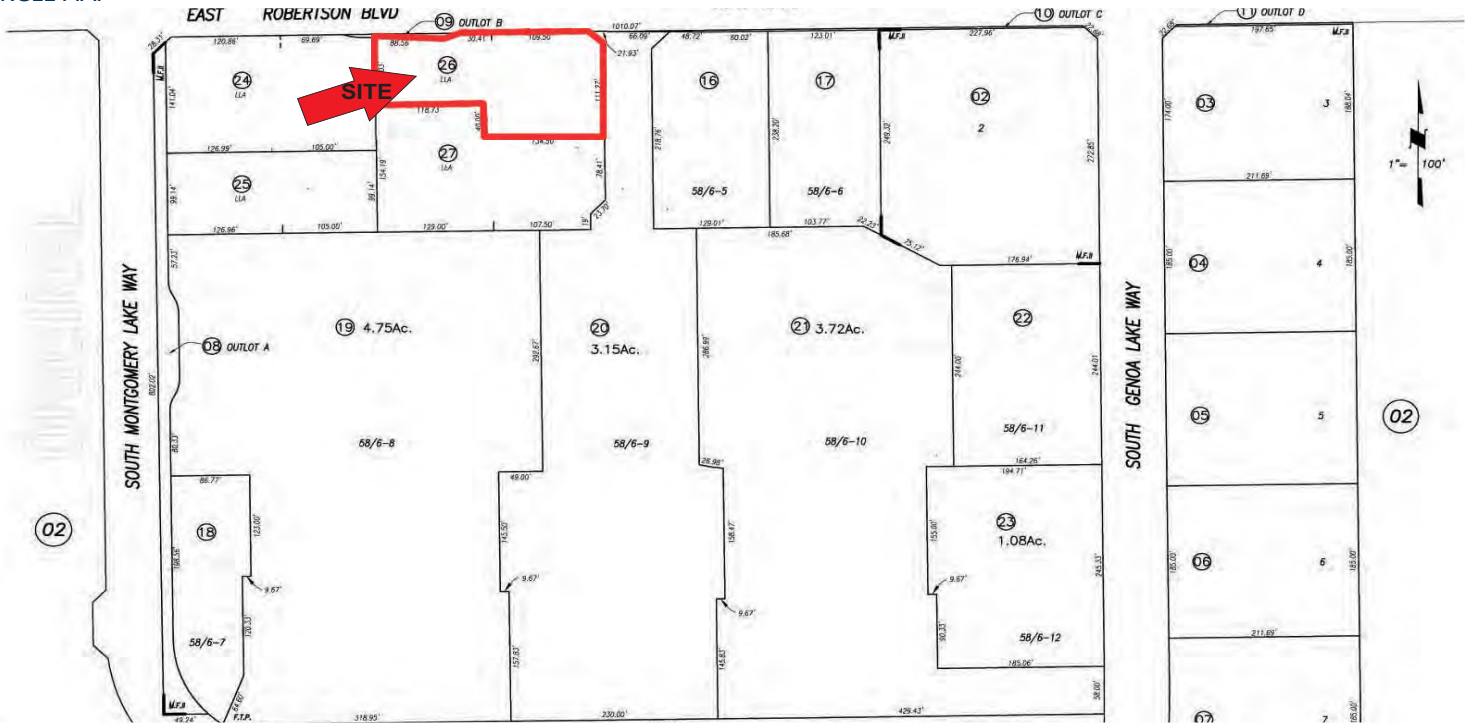
Former Fast Food Restuarant for Sale or Lease

±2,479 SF
AVAILABLE
CHOWCHILLA, CA

AERIAL MAP



PARCEL MAP



For more information, please contact:

RICK AMERINE
Senior Director
(559) 433 3541
rick.amerine@paccra.com
Lic. #00551583

PACCOM REALTY ADVISORS, INC.
Lic. #01919464
9 River Park Place East, Ste. 101
Fresno, CA 93720
www.paccra.com

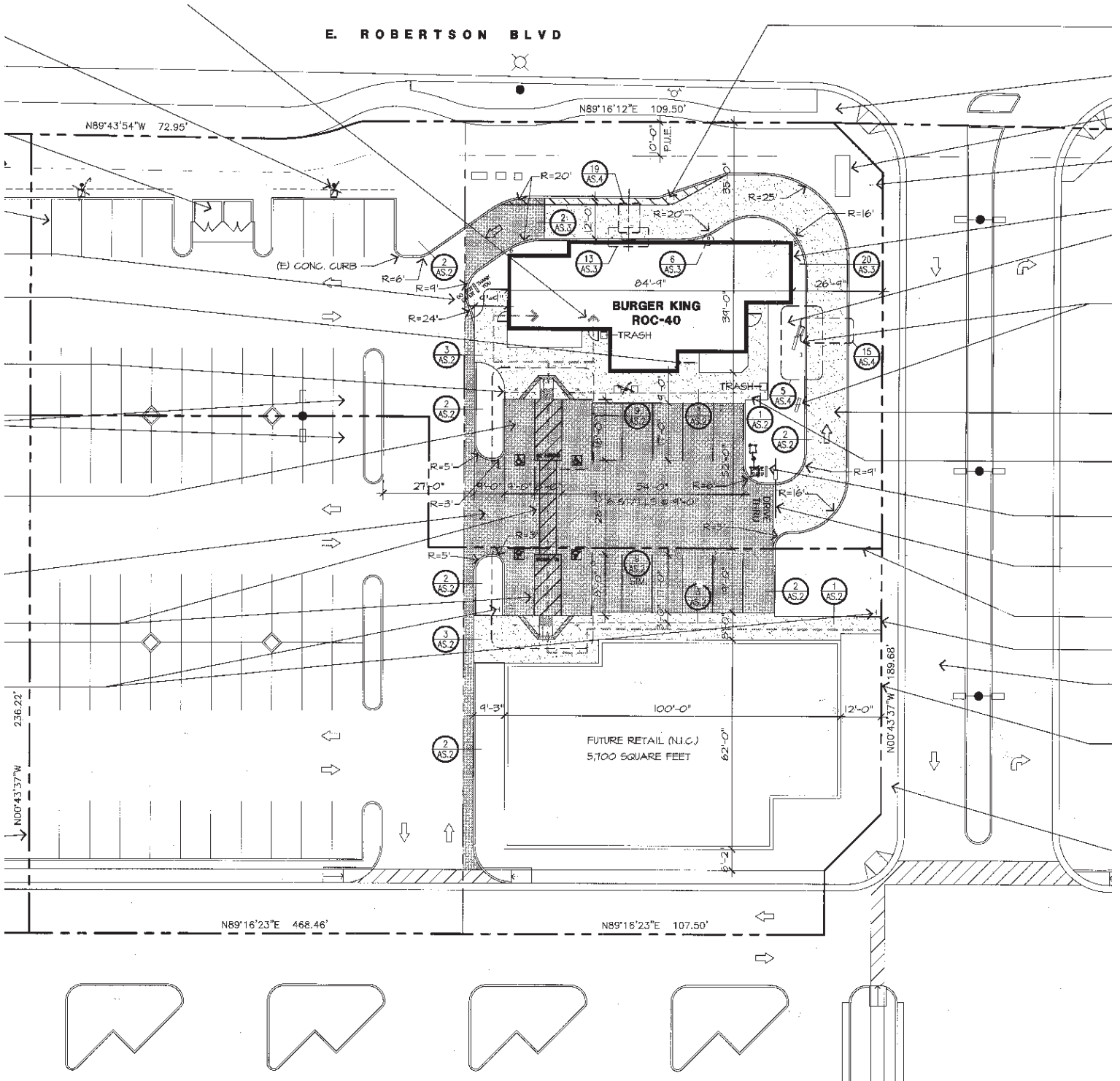
The depiction in the included photograph of any person, entity, sign, logo or property, other than Paccom Realty Advisors,' (Paccra) client and the property offered by Paccra, is incidental only, and is not intended to connote any affiliation, connection, association, sponsorship or approval by or between that which is incidentally depicted and Paccra or its client. This listing shall not be deemed an offer to lease, sublease or sell such property; and, in the event of any transaction for such property, no commission shall be earned by or payable to any cooperating broker except if otherwise provided pursuant to the express terms, rates and conditions of Paccra's agreement with its principal, if, as and when such commission (if any) is actually received from such principal. (A copy of the rates and conditions referred to above with respect to this property is available upon request.) 06323140514

SEQ HWY 99 & ROBERTSON BLVD

Former Fast Food Restuarant for Sale or Lease

±2,479 SF
AVAILABLE
CHOWCHILLA, CA

SITE PLAN



For more information, please contact:

RICK AMERINE
Senior Director
(559) 433 3541
rick.amerine@paccra.com
Lic. #00551583

PACCOM REALTY ADVISORS, INC.
Lic. #01919464
9 River Park Place East, Ste. 101
Fresno, CA 93720
www.paccra.com

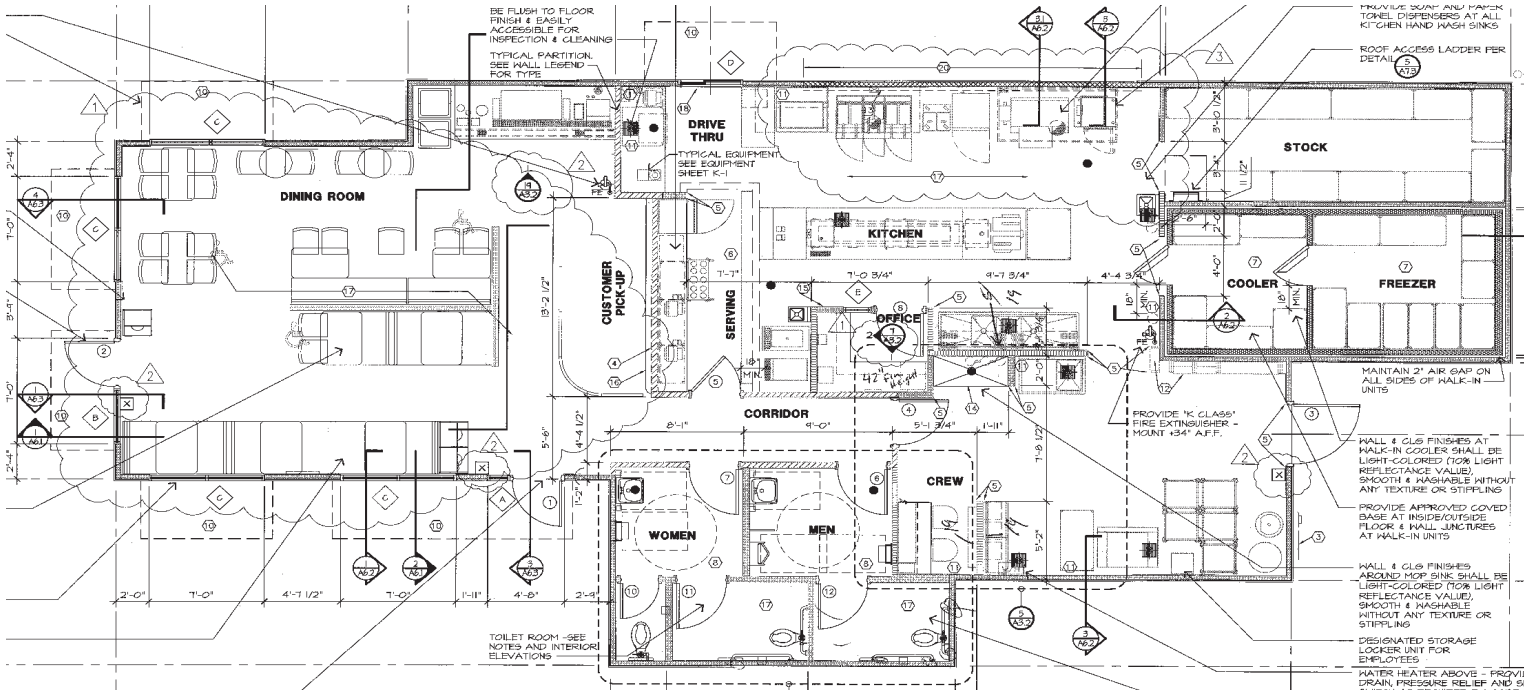
The depiction in the included photograph of any person, entity, sign, logo or property, other than Paccom Realty Advisors, (Paccra) client and the property offered by Paccra, is incidental only, and is not intended to connote any affiliation, connection, association, sponsorship or approval by or between that which is incidentally depicted and Paccra or its client. This listing shall not be deemed an offer to lease, sublease or sell such property; and, in the event of any transaction for such property, no commission shall be earned by or payable to any cooperating broker except if otherwise provided pursuant to the express terms, rates and conditions of Paccra's agreement with its principal, if, as and when such commission (if any) is actually received from such principal. (A copy of the rates and conditions referred to above with respect to this property is available upon request.) 06323140514

SEQ HWY 99 & ROBERTSON BLVD

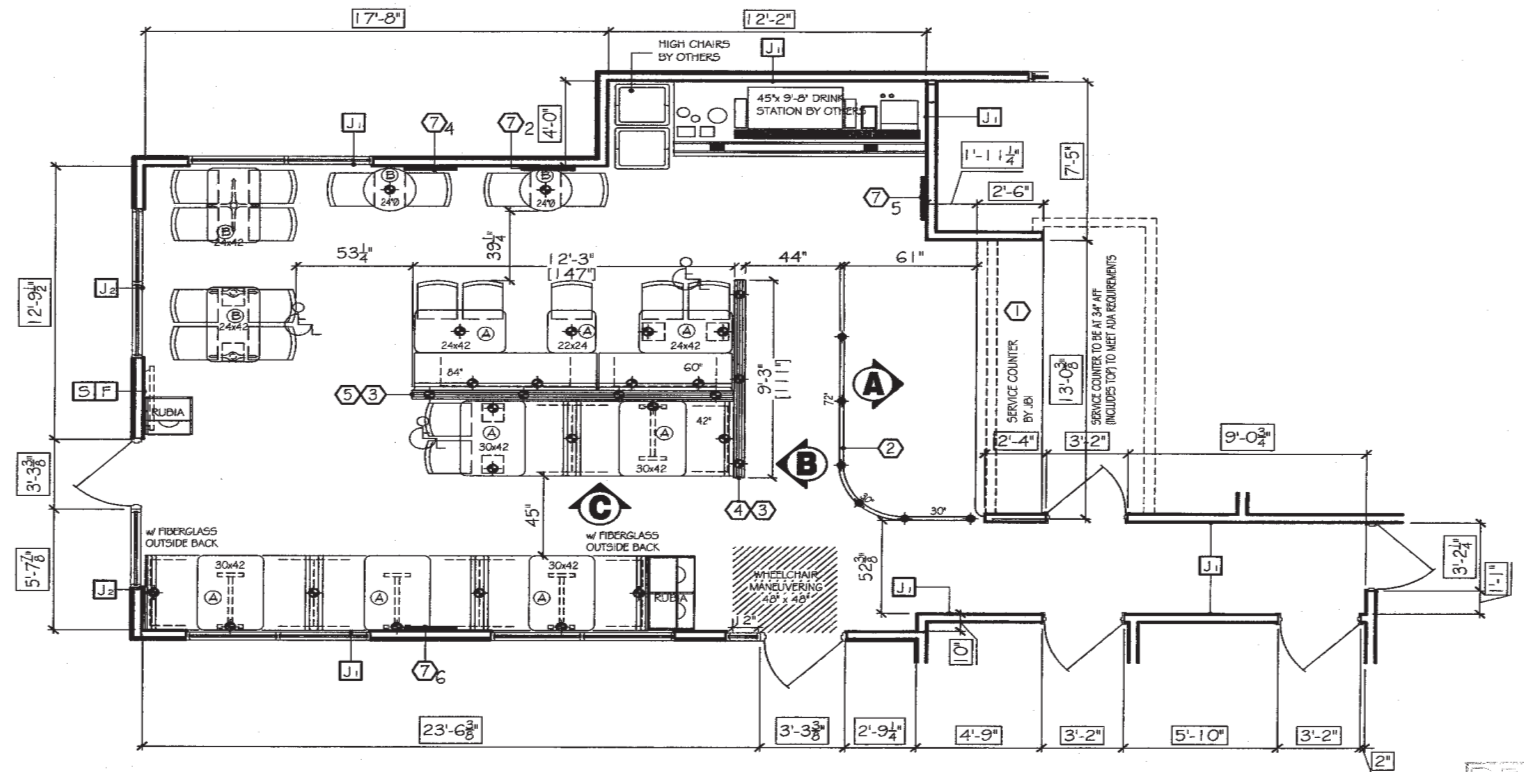
Former Fast Food Restuarant for Sale or Lease

±2,479 SF
AVAILABLE
CHOWCHILLA, CA

BUILDING FLOOR PLAN



FLOOR PLAN



For more information, please contact:

RICK AMERINE
Senior Director
(559) 433 3541
rick.amerine@paccra.com
Lic. #00551583

PACCOM REALTY ADVISORS, INC.
Lic. #01919464
9 River Park Place East, Ste. 101
Fresno, CA 93720
www.paccra.com

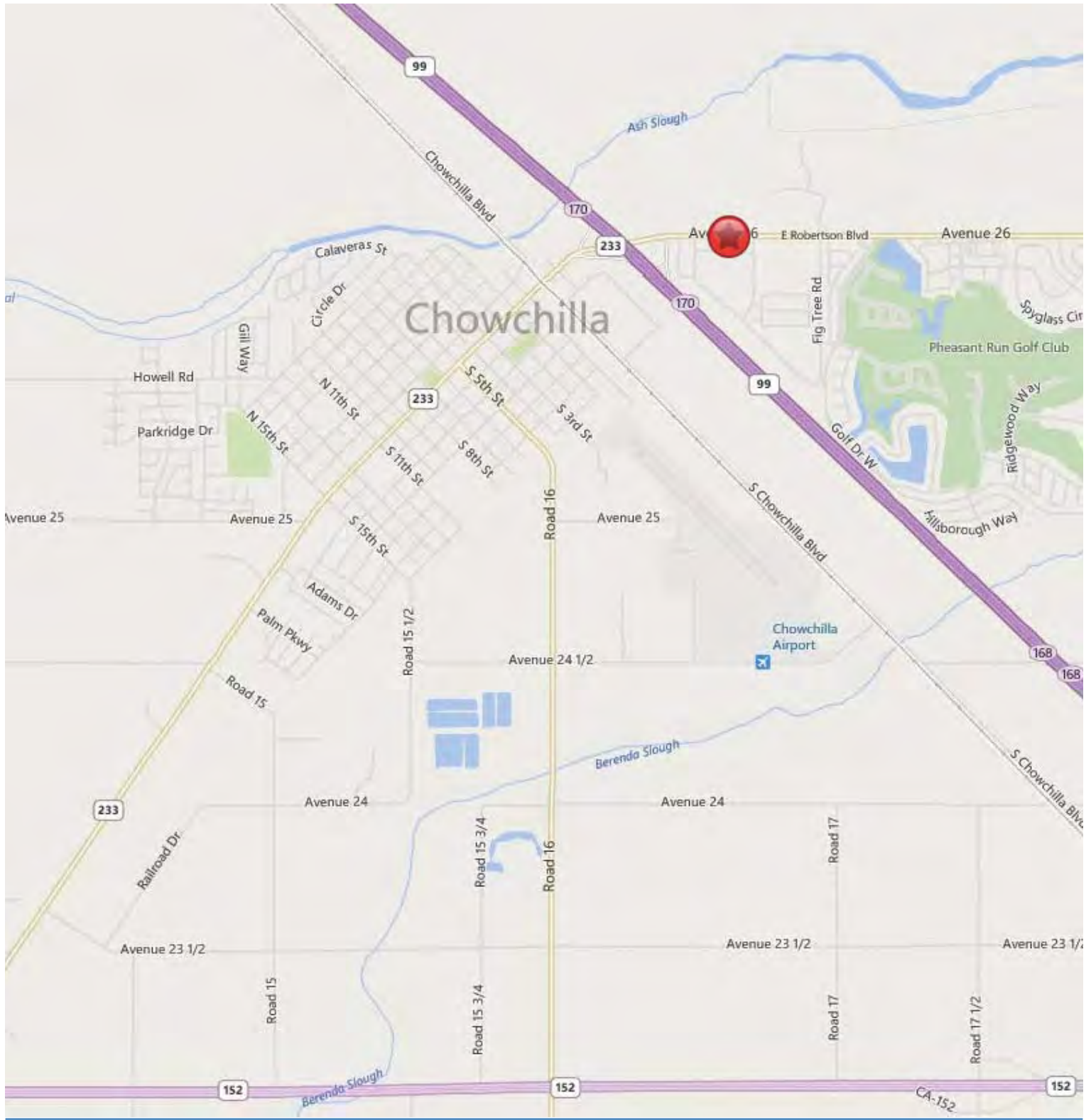
The depiction in the included photograph of any person, entity, sign, logo or property, other than Paccom Realty Advisors,' (Paccra) client and the property offered by Paccra, is incidental only, and is not intended to connote any affiliation, connection, association, sponsorship or approval by or between that which is incidentally depicted and Paccra or its client. This listing shall not be deemed an offer to lease, sublease or sell such property; and, in the event of any transaction for such property, no commission shall be earned by or payable to any cooperating broker except if otherwise provided pursuant to the express terms, rates and conditions of Paccra's agreement with its principal, if, as and when such commission (if any) is actually received from such principal. (A copy of the rates and conditions referred to above with respect to this property is available upon request.) 06323140514

SEQ HWY 99 & ROBERTSON BLVD

Former Fast Food Restuarant for Sale or Lease

±2,479 SF
AVAILABLE
CHOWCHILLA, CA

CHOWCHILLA CITY LOCATION MAP



For more information, please contact:

RICK AMERINE
Senior Director
(559) 433 3541
rick.amerine@paccra.com
Lic. #00551583

PACCOM REALTY ADVISORS, INC.
Lic. #01919464
9 River Park Place East, Ste. 101
Fresno, CA 93720
www.paccra.com

The depiction in the included photograph of any person, entity, sign, logo or property, other than Paccom Realty Advisors, (Paccra) client and the property offered by Paccra, is incidental only, and is not intended to connote any affiliation, connection, association, sponsorship or approval by or between that which is incidentally depicted and Paccra or its client. This listing shall not be deemed an offer to lease, sublease or sell such property; and, in the event of any transaction for such property, no commission shall be earned by or payable to any cooperating broker except if otherwise provided pursuant to the express terms, rates and conditions of Paccra's agreement with its principal, if, as and when such commission (if any) is actually received from such principal. (A copy of the rates and conditions referred to above with respect to this property is available upon request.) 06323140514

SEQ HWY 99 & ROBERTSON BLVD

Former Fast Food Restuarant for Sale or Lease

±2,479 SF
AVAILABLE
CHOWCHILLA, CA

DEMOGRAPHICS

2000-2010 Census, 2013 Estimates with 2018 Projections

Calculated using Proportional Block Groups

Rick Amerine



Lat/Lon: 37.1273/-120.2454

SEQ Hwy 99 & Robertson Blvd		1 mi radius	3 mi radius	5 mi radius
Chowchilla, CA 93610				
POPULATION	2013 Estimated Population	1,414	11,232	14,480
	2018 Projected Population	1,486	11,800	15,159
	2010 Census Population	1,330	10,589	13,915
	2000 Census Population	1,065	8,302	10,653
	Projected Annual Growth 2013 to 2018	1.0%	1.0%	0.9%
	Historical Annual Growth 2000 to 2013	2.5%	2.7%	2.8%
	2013 Median Age	30.6	30.7	31.2
HOUSEHOLDS	2013 Estimated Households	457	3,488	4,147
	2018 Projected Households	477	3,644	4,333
	2010 Census Households	444	3,393	4,035
	2000 Census Households	355	2,673	3,000
	Projected Annual Growth 2013 to 2018	0.9%	0.9%	0.9%
	Historical Annual Growth 2000 to 2013	2.2%	2.3%	2.9%
RACE AND ETHNICITY	2013 Estimated White	66.1%	68.1%	66.4%
	2013 Estimated Black or African American	2.7%	2.3%	4.3%
	2013 Estimated Asian or Pacific Islander	2.7%	2.5%	2.7%
	2013 Estimated American Indian or Native Alaskan	1.8%	1.6%	1.6%
	2013 Estimated Other Races	26.7%	25.6%	25.0%
	2013 Estimated Hispanic	43.3%	43.8%	43.8%
INCOME	2013 Estimated Average Household Income	\$54,680	\$52,575	\$56,405
	2013 Estimated Median Household Income	\$51,593	\$46,532	\$49,361
	2013 Estimated Per Capita Income	\$17,715	\$16,480	\$17,353
EDUCATION (AGE 25+)	2013 Estimated Elementary (Grade Level 0 to 8)	10.8%	16.0%	15.5%
	2013 Estimated Some High School (Grade Level 9 to 11)	19.0%	15.1%	14.0%
	2013 Estimated High School Graduate	31.5%	27.7%	28.2%
	2013 Estimated Some College	23.6%	24.7%	24.8%
	2013 Estimated Associates Degree Only	6.4%	5.5%	5.5%
	2013 Estimated Bachelors Degree Only	5.7%	7.5%	8.2%
	2013 Estimated Graduate Degree	3.0%	3.4%	3.7%
BUSINESS	2013 Estimated Total Businesses	91	334	384
	2013 Estimated Total Employees	612	2,566	3,368
	2013 Estimated Employee Population per Business	6.7	7.7	8.8
	2013 Estimated Residential Population per Business	15.6	33.6	37.7

This report was produced using data from private and government sources deemed to be reliable. The information herein is provided without representation or warranty.

For more information, please contact:

RICK AMERINE
Senior Director
(559) 433 3541
rick.amerine@paccra.com
Lic. #00551583

PACCOM REALTY ADVISORS, INC.
Lic. #01919464
9 River Park Place East, Ste. 101
Fresno, CA 93720
www.paccra.com

The depiction in the included photograph of any person, entity, sign, logo or property, other than Paccom Realty Advisors,' (Paccra) client and the property offered by Paccra, is incidental only, and is not intended to connote any affiliation, connection, association, sponsorship or approval by or between that which is incidentally depicted and Paccra or its client. This listing shall not be deemed an offer to lease, sublease or sell such property; and, in the event of any transaction for such property, no commission shall be earned by or payable to any cooperating broker except if otherwise provided pursuant to the express terms, rates and conditions of Paccra's agreement with its principal, if, as and when such commission (if any) is actually received from such principal. (A copy of the rates and conditions referred to above with respect to this property is available upon request.)