

Land For Lease

Loopnet # 15446017

Retail Pad Site

9630 Ida Street

Omaha, NE 68122

SITE DATA::

Total Site Area: .20 Acres

Zoning: General Industrial

LEASE DATA::

Lease Term: Minimum 1-Year Term

Lease Type: Absolute Net

Security Deposit: One Month

Available: Now



LOCATION AND PROPERTY DESCRIPTION::

- Great location off the I-680 & Hwy 133 (Blair High Rd / Military Ave) at the Irvington exit
- Hwy 133 is a major arterial to outlying bedroom communities
- Located next to Tractor Supply Company & across from Super Wal-Mart
- A nearby company employs nearly 700 people
- Zoned General Industrial
- Pad site has an asphalt surface and is ready for your building
- Site can accommodate a building size of approximately 1,200-3,200 square feet
- Suitable for an ATM, fast food, coffee hut, or similar businesses

Information furnished is from sources deemed reliable, but is not guaranteed by Marathon Realty Corporation or its agents, and is subject to change, corrections, errors and omissions, prior sales/leases, or withdrawal, without notice. All dimensions & sizes are approximate. 20161209ST

Marathon

Cindy Makinster :: 11222 Davenport Street
402-330-2656x111 :: Omaha, NE 68154
Cindy@MarathonBiz.com :: www.MarathonBiz.com

Retail Pad Site
9630 Ida Street
Omaha, NE 68122

The map displays the Blair High Road area, highlighting the proposed site for Tractor Supply Co. in yellow. The site is located near the intersection of Blair High Road and Military Rd. Surrounding landmarks include Burger King, Jimmy John's, and Walmart. Major roads shown are Blair High Road, Military Rd, Fort St, and various local streets like N 101st Pl, N 103rd St, and N 105th St. The map also shows the Seaton Industrial Park and various residential areas like Avalon North and Fort Crest.

Cindy Makinster :: 11222 Davenport Street
402-330-2656x111 :: Omaha, NE 68154
Cindy@MarathonBiz.com :: www.MarathonBiz.com

Marathon

Land For Lease

Loopnet # 15446017

Retail Pad Site

9630 Ida Street

Omaha, NE 68122

Aerial::



Information furnished is from sources deemed reliable, but is not guaranteed by Marathon Realty Corporation or its agents, and is subject to change, corrections, errors and omissions, prior sales/leases, or withdrawal, without notice. All dimensions & sizes are approximate. 20161209ST

Cindy Makinster
402-330-2656x111
Cindy@MarathonBiz.com

11222 Davenport Street
Omaha, NE 68154
www.MarathonBiz.com

Marathon

Land For Lease

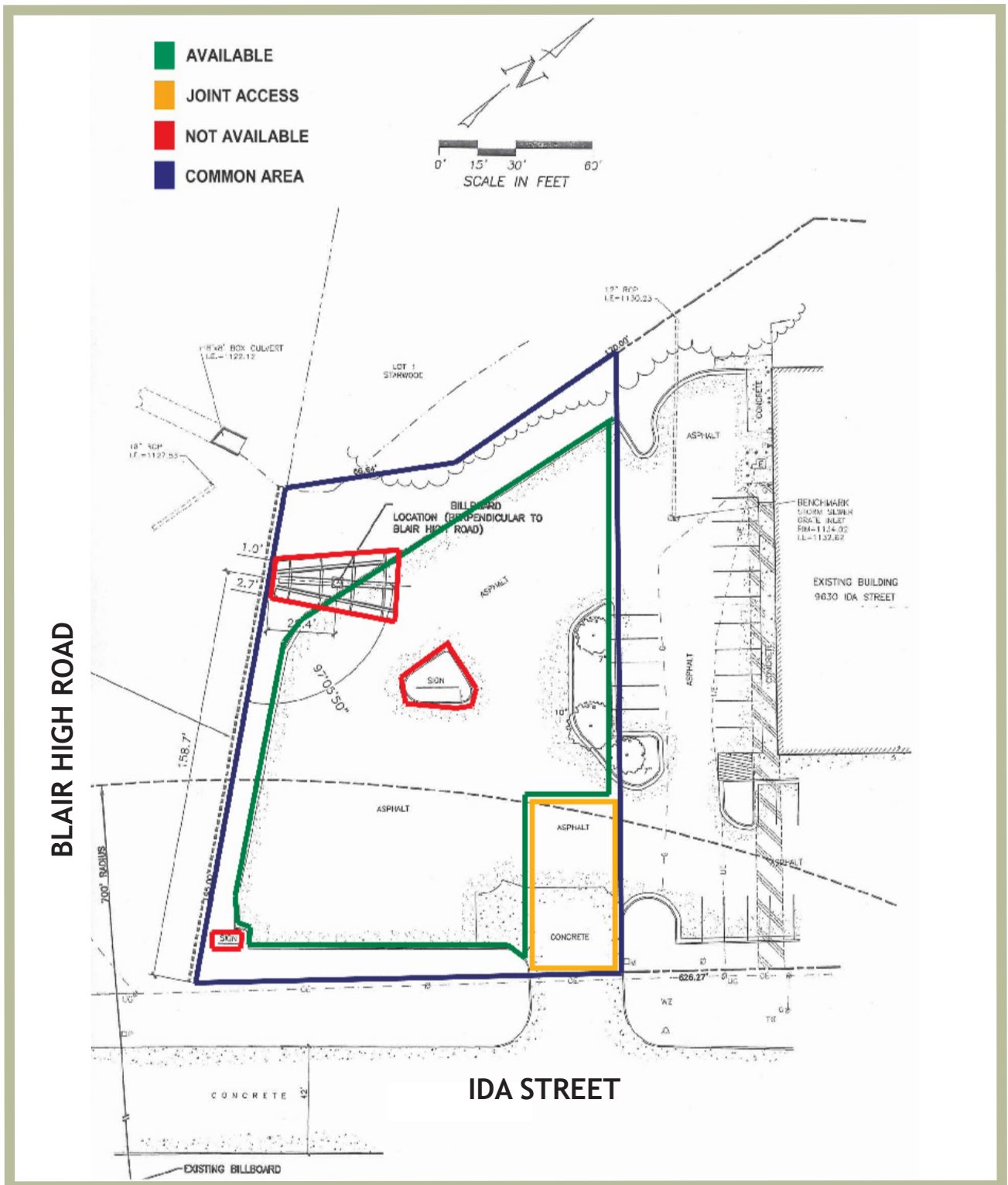
Loopnet # 15446017

Retail Pad Site

9630 Ida Street

Omaha, NE 68122

Site Plan::



Information furnished is from sources deemed reliable, but is not guaranteed by Marathon Realty Corporation or its agents, and is subject to change, corrections, errors and omissions, prior sales/ leases, or withdrawal, without notice. All dimensions & sizes are approximate. 20161209ST

Cindy Makinster
402-330-2656x111
Cindy@MarathonBiz.com

Marathon
11222 Davenport Street
Omaha, NE 68154
www.MarathonBiz.com