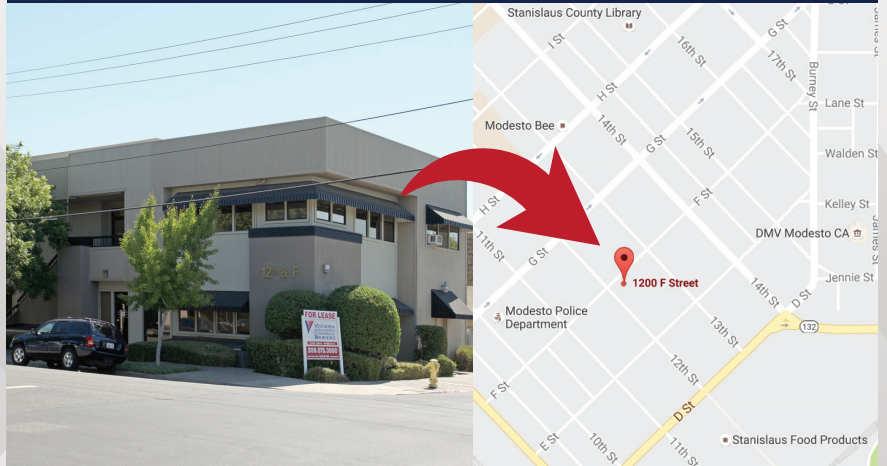


# Office Property For Lease 1200 F Street, Modesto

## PROPERTY DESCRIPTION

- Rental Rate: \$12 /SF/Year
- Lease Type: Modified Gross
- Building Size: 6,191 SF
- Min. Divisible: 989 SF
- Max. Contiguous: 2,346 SF
- Building Class: C
- Year Built: 1981
- Lot Size: 5,227 SF
- Parking Lot & Street Parking Available

## 3 OFFICE UNITS AVAILABLE IN THE HAN BUILDING



Property is located in downtown Modesto close to

- CA Highways 99, 132, and 108,
- Modesto Police Department,
- Stanislaus County Superior Court,
- Modesto DMV Office.

For more information, please give us a call

**BRIAN VELTHOEN, CCIM**

CalBRE #00680719

209.338.0370 | [brianv@pmz.com](mailto:brianv@pmz.com)

**REBECCA ELLIS**

CalBRE #01748227

209.338.0380 | [rellis@pmz.com](mailto:rellis@pmz.com)



**PMZ** COMMERCIAL  
SINCE 1957 REAL ESTATE