

FOR LEASE

URBAN
WORKS

PEARL DISTRICT RETAIL SPACE

SPACE | 1,643 SF
AVAILABLE NOW

S
I
T
E



TANNER PLACE

1030 NW JOHNSON ST

DAN BOZICH | 503.228.3135
dbozich@urbanworksrealestate.com

BRIAN GREELEY | 503.228.3147
bgreeley@urbanworksrealestate.com

urbanworksrealestate.com

TANNER PLACE



About the Space

Fronting NW 11th Ave and located directly next to Jamison Square, this second generation retail / showroom space features a floor-to-ceiling glass line and exposed ceiling.

Address

1030 NW Johnson

Area

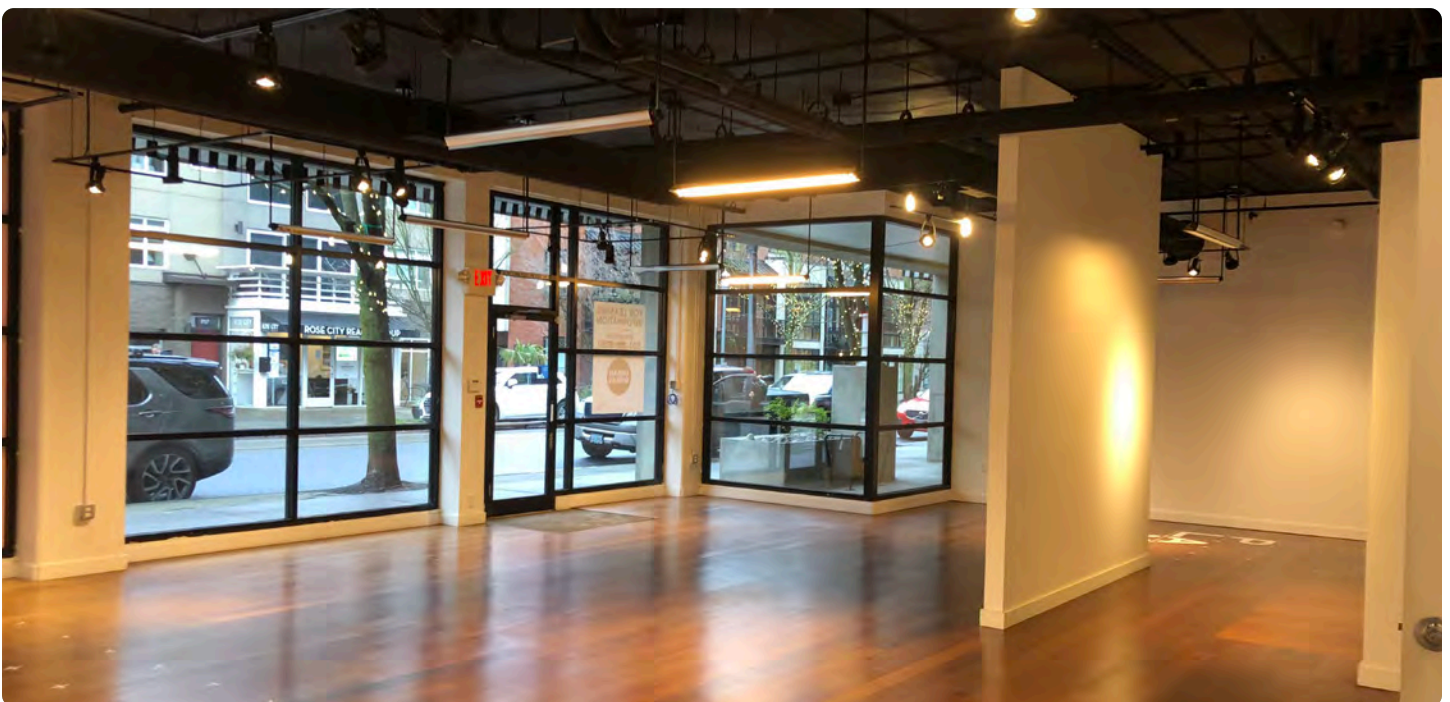
Pearl District

Space

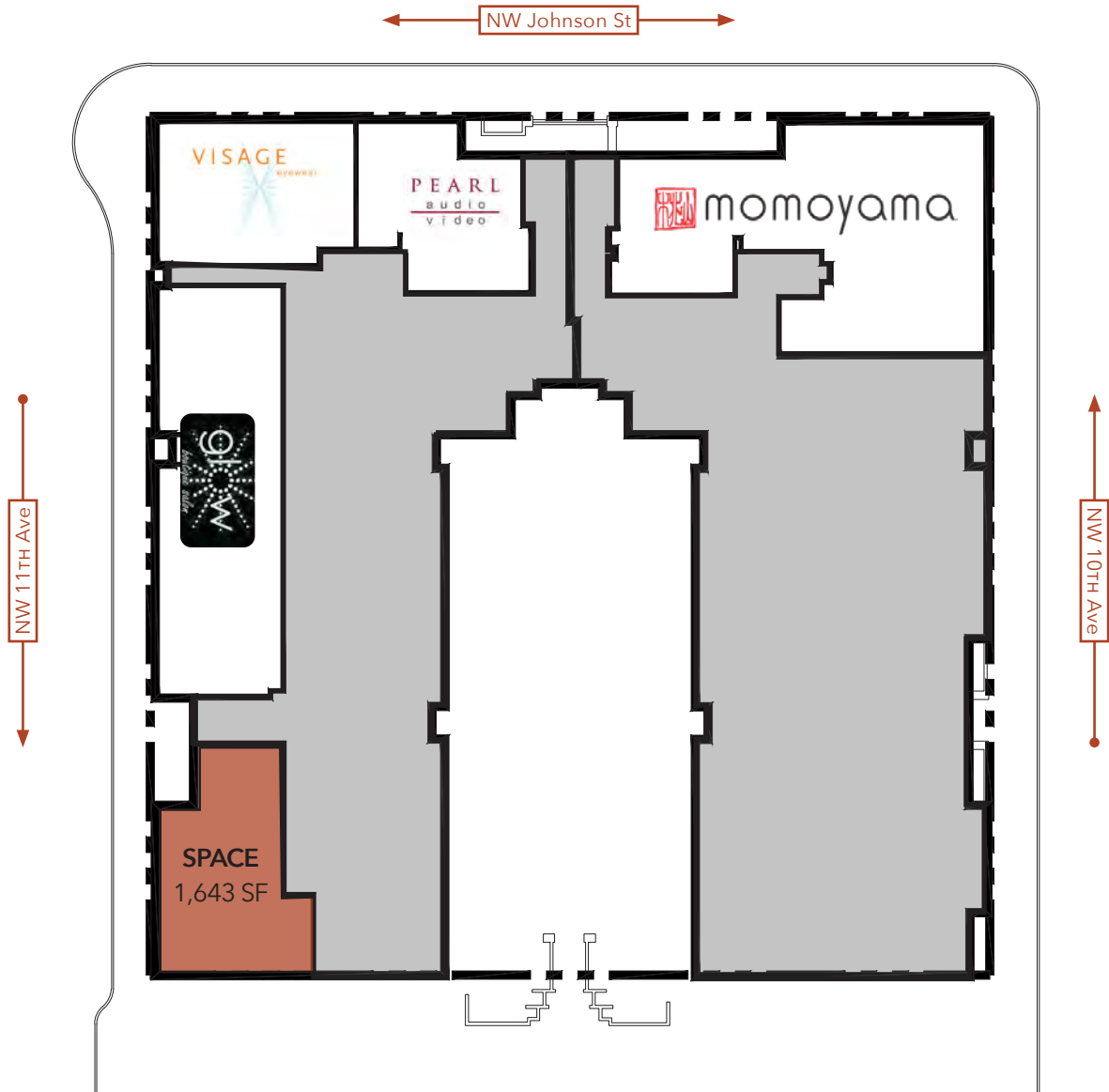
1,643 SF

Uses

Retail / Creative / Service



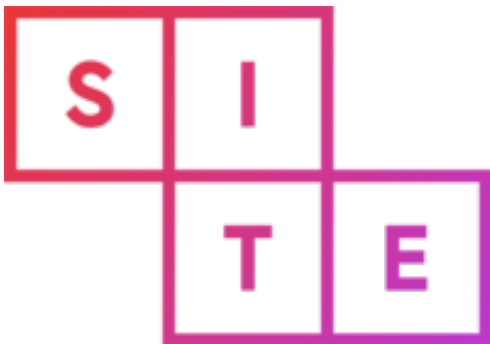
SITE PLAN





The Blocks

Tanner Place is part of The Blocks, a collection of ten buildings acquired by SITE Centers in late 2019. The buildings are concentrated in the northern Pearl District neighborhood and include 40 ground floor retail spaces with 94,000 SF of residential space. The Blocks aim to provide excellent neighborhood amenities and create a synergy in the bustling neighborhood.



The Blocks Total Retail Square Footage

Encore	1,400 SF	Streetcar Lofts.....	9,193 SF
Cosmopolitan	7,876 SF	Metropolitan	16,893 SF
Pinnacle	7,415 SF	Park Place	15,203 SF
Lexis	7,195 SF	Riverstone.....	10,249 SF
Bridgeport.....	7,560 SF	Tanner Place	11,346 SF

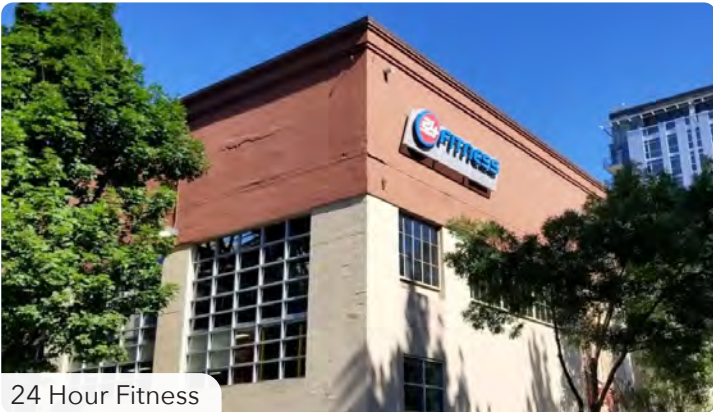
NEIGHBORHOOD RETAIL



Demographics	¼ Mile	½ Mile	1 Mile
2022 Population	6,428	16,127	43,382
Total Employees	6,754	25,799	95,857
Total Businesses	730	2,561	8,924
Median Household Income	\$90,348	\$77,763	\$63,000
Median Age	39.6	39.1	39.1
Any College	92.9%	84.5%	85%



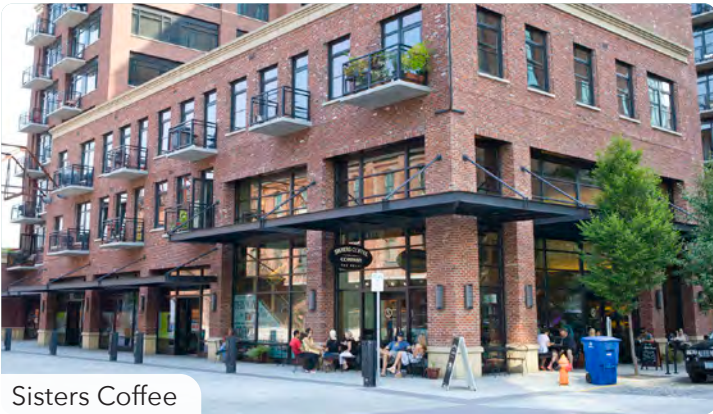
Carlita's: Tacos Tequila Whiskey



24 Hour Fitness



The Fields Park



Sisters Coffee



Can Font



Barry's Bootcamp



Tea Bar

PEARL DISTRICT

