

541 WILMINGTON AVENUE

DAYTON, OH 45420



RETAIL | FOR LEASE

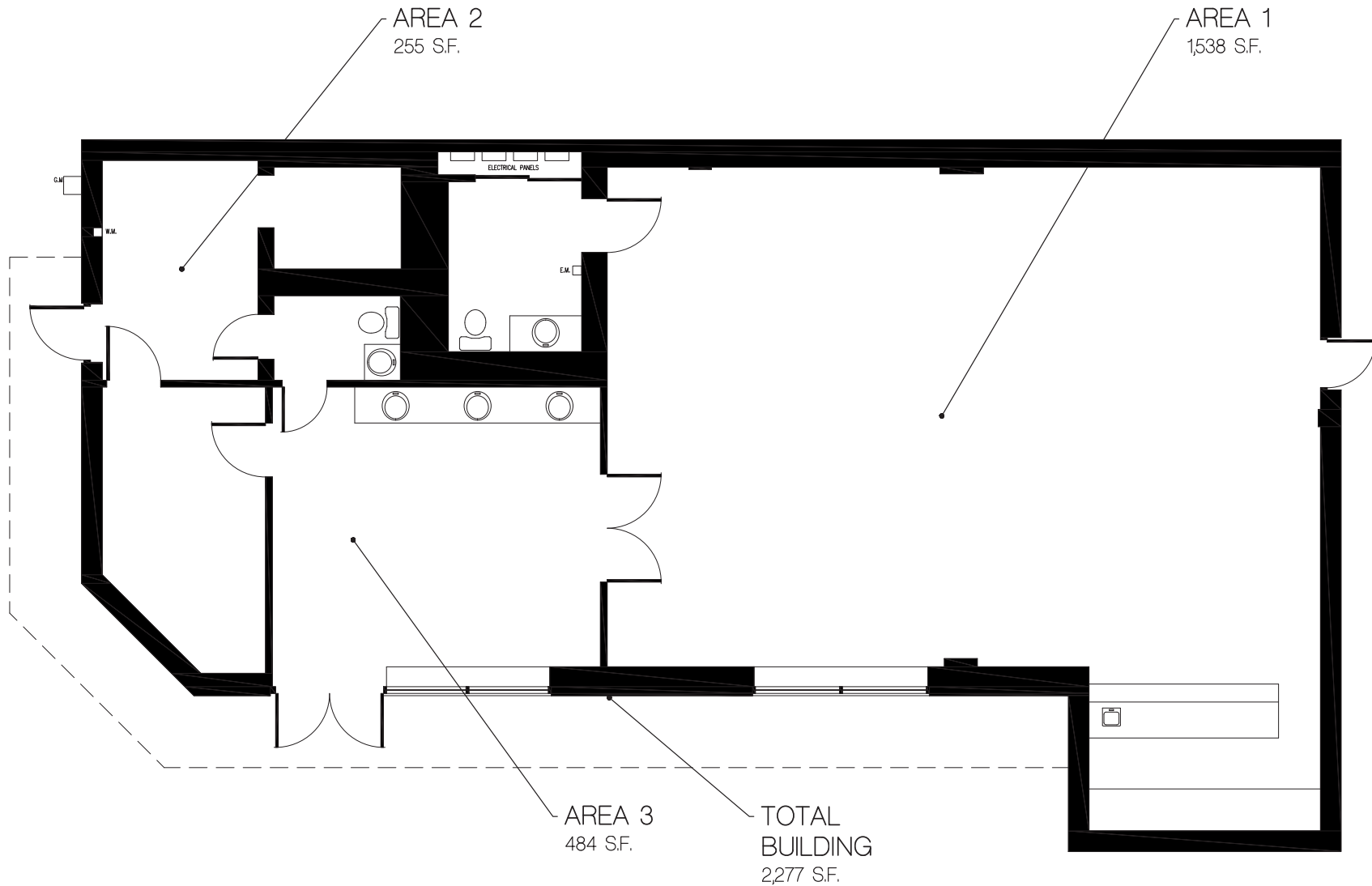
CBRE



PROPERTY FEATURES

- + 1,538 SF expandable to 2,277 SF
- + Retail Corridor near UD
- + Across the street for Hospice of Dayton
- + Intersection of Shroyer and Wilmington
- + Traffic Counts: Shroyer Road 9,098,
Wilmington 19,628
- + 16.00/SF triple net

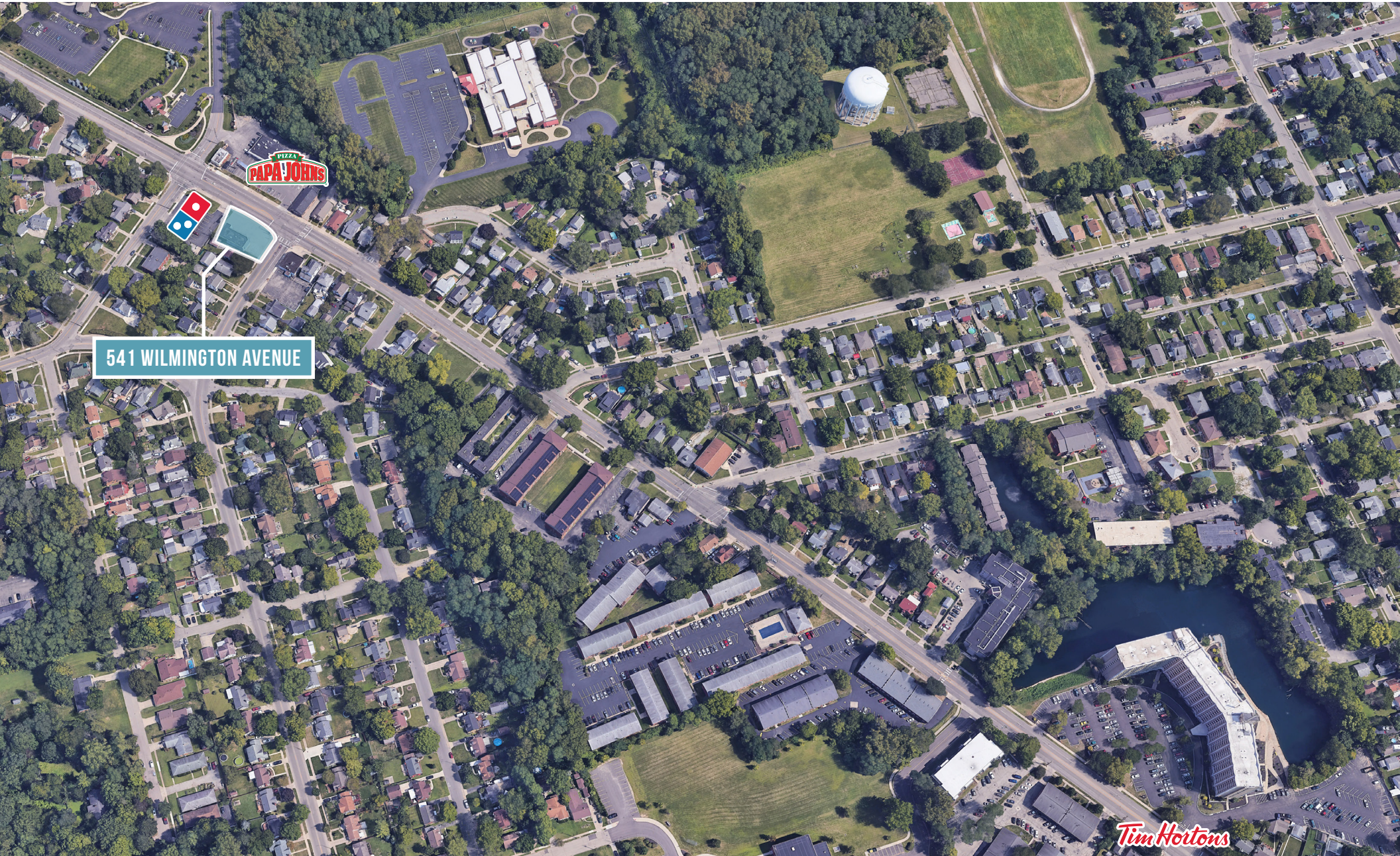
FLOOR PLAN



541 WILMINGTON AVENUE

FOR LEASE

NEARBY AMENITIES





CONTACT DETAILS

MATTHEW ARNOVITZ, SIOR, CCIM, CPM

Senior Associate

937 901 2916

matthew.arnovitz@cbre.com

