



Sublease Space Available

**2760 29TH STREET
BOULDER, COLORADO**

Area

3,902 RSF; Suite 1E

Sublease Rate

\$24.00/SF/MG

Sublease Term

Through September 30, 2023

Parking

3:1,000

Office for Sublease

Property Highlights

- Lobby identity
- Boulder location with 29th Street address
- Easy access to Pearl Street/Downtown Boulder
- High identity location provides excellent access anywhere in Boulder
- Walking distance to Whole Foods and surrounding shops

For information, please contact:

Clay Jones

t 303-260-4249

clay.jones@nmrk.com

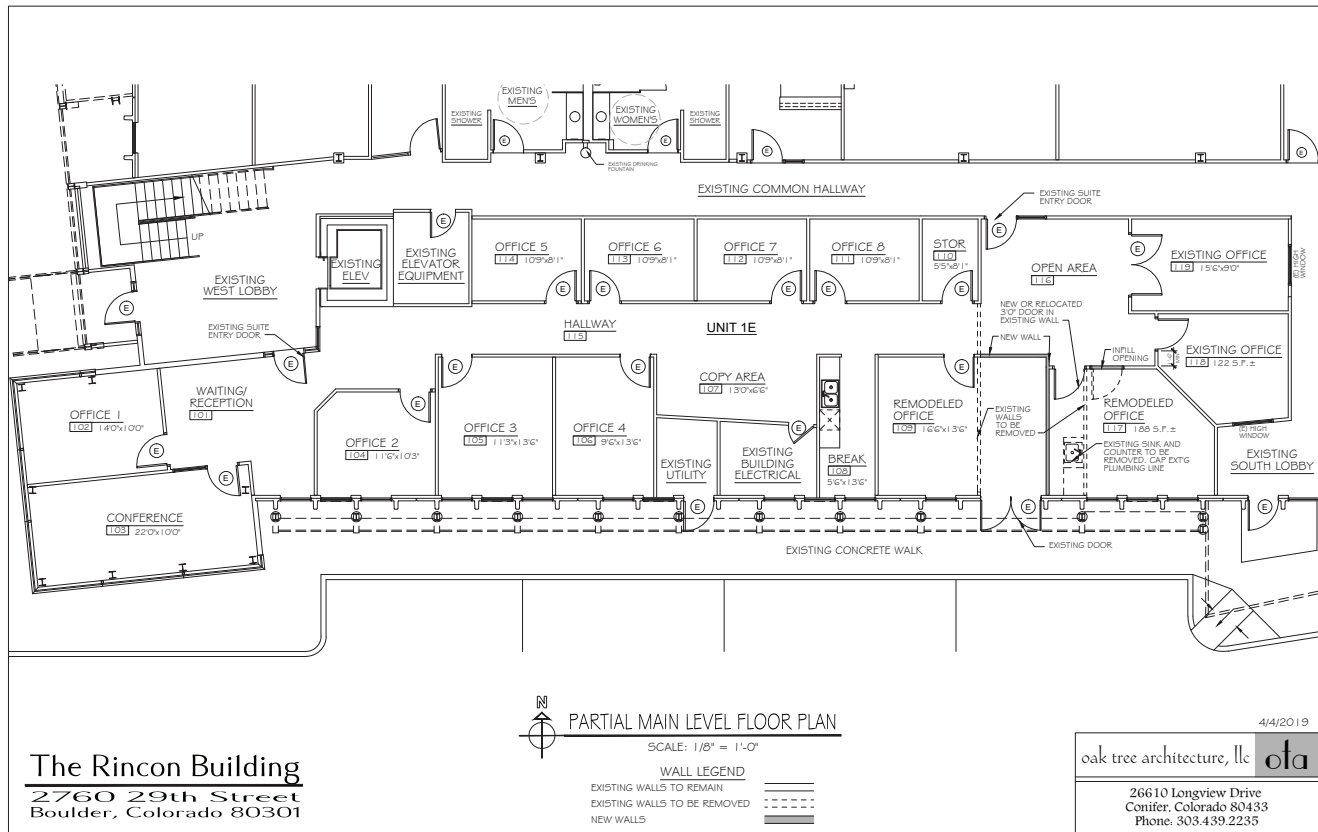
1800 Larimer Street, Suite 1700,
Denver, CO 80202

nmrk.com

NEWMARK

The information contained herein has been obtained from sources deemed reliable but has not been verified and no guarantee, warranty or representation, either express or implied, is made with respect to such information. Terms of sale or lease and availability are subject to change or withdrawal without notice.

OFFICE FOR SUBLEASE - FLOORPLAN



CONTACT

Clay Jones
t 303-260-4248
clay.jones@nmrk.com

nmrk.com

NEWMARK