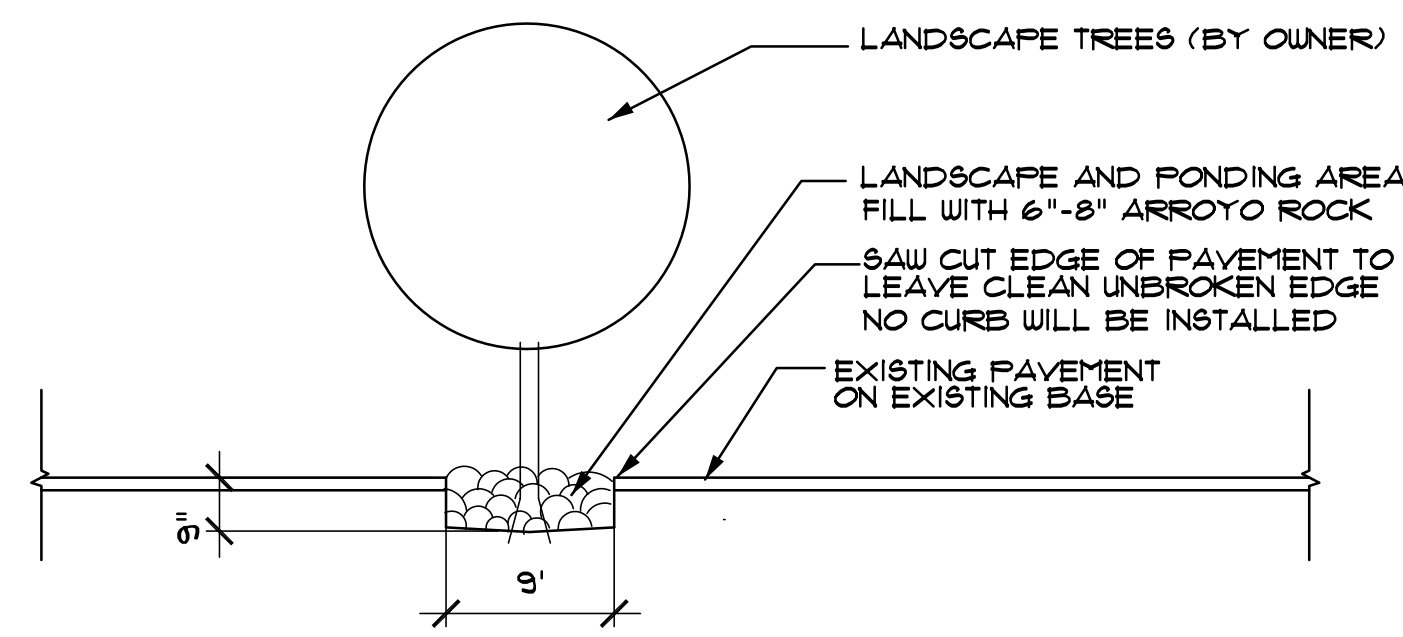
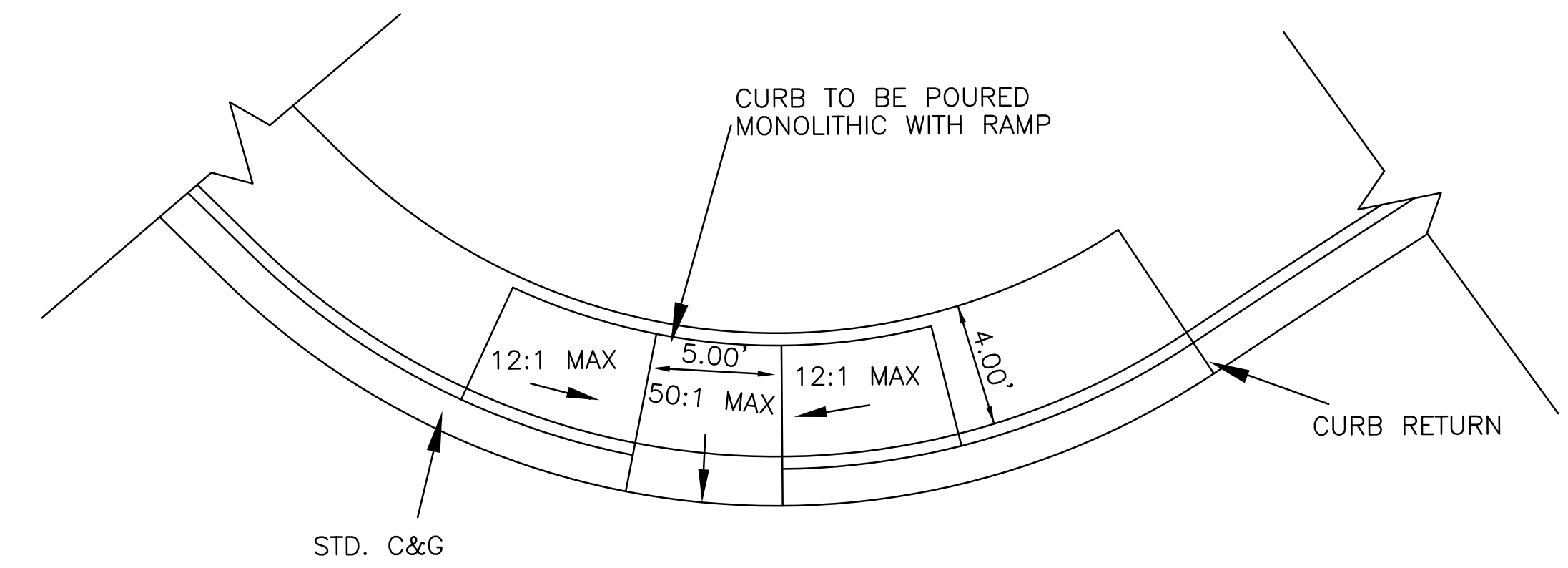


SECTION 1
NOT TO SCALE



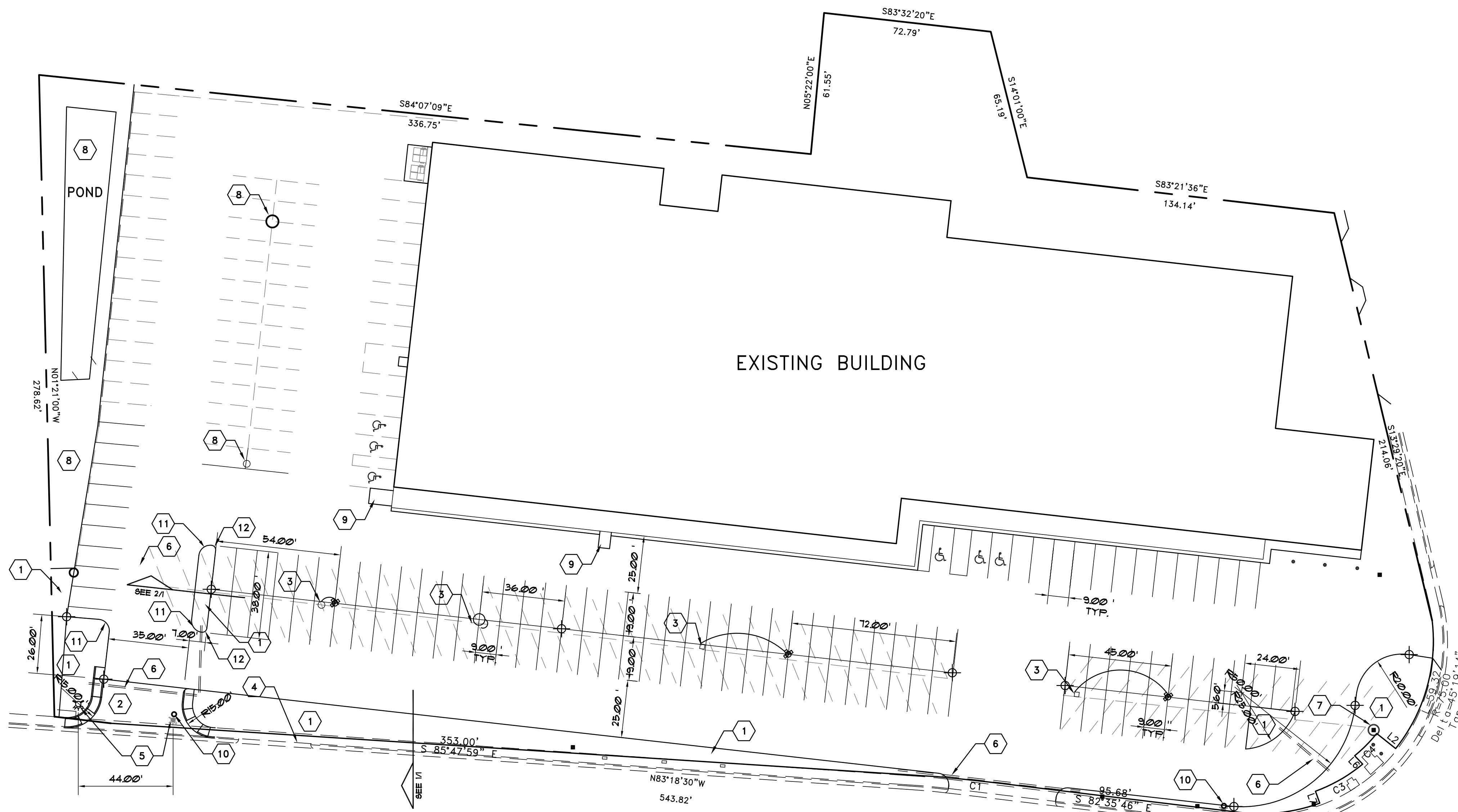
SECTION 2
NOT TO SCALE



HANDICAP RAMP/CURB RETURN TRANSITION DETAIL
NOT TO SCALE

CURVE TABLE					
CURVE	RADIUS	LENGTH	CHORD	CH-LENGTH	DELTA
C1	1027.00	36.54	N83°12'06"W	36.54	02°02'19"
C2	75.00	35.28	N83°55'41"E	34.96	26°57'19"
C3	69.48	23.77	N60°39'07"E	23.65	19°35'53"
C4	64.48	13.63	N45°07'12"E	13.60	12°06'26"

LINE TABLE		
LINE	LENGTH	BEARING
L2	10.52	S50°57'26"E
L6	5.01	N43°17'59"W
L7	5.52	N19°34'22"W



SITE PLAN
SCALE 1"=30'

- SITE PLAN NOTES**
- LANDSCAPE AND PONDING AREAS. CUT AND REMOVE EXISTING PAVEMENT AND BASE MATERIAL TO A DEPTH OF 9 INCHES AND REPLACE WITH SOIL APPROPRIATE FOR LANDSCAPING. SEE SECTIONS 1 AND 2 ABOVE.
 - REMOVE EXISTING CURB AND/OR WALKS AND INSTALL NEW CONCRETE CURB RETURNS AND DRIVE PAD.
 - RELOCATE EXISTING LIGHT POLES, SIGN POLES, AND BASES. PATCH ASPHALT AS REQUIRED.
 - INSTALL NEW CURB AND GUTTER WHERE EXISTING CURB CUTS ARE BEING CLOSED, WHERE NO CURB EXIST, AND WHERE EXISTING CURBS NEED REPLACEMENT.
 - RELOCATE FIRE HYDRANT AS SHOWN.
 - CUT PAVEMENT, INSTALL 4" PVC PIPE FOR IRRIGATION.
 - FAMILY DOLLAR SIGN TO REMAIN.
 - EXISTING TO REMAIN.
 - EXISTING ADA RAMP.
 - CONTROL POINTS SET W/ PK NAILS BY DIAMONDBACK LANDSURVEYING.
 - 5' RADIUS
 - 2' RADIUS

LANDSCAPE ANALYSIS

TOTAL LOT AREA =	3.709 ACRES
TOTAL BUILDING AREA =	1.22 ACRES
REQUIRED LANDSCAPING AREA = 0.15x(3.709-1.22) =	0.37 ACRES = (16,263 SQ.FT.)
LANDSCAPE AREA PROVIDED =	0.26 ACRES = (11,472 SQ.FT.)
REQUIRED PLANTING	
TREES = 0.001x16,263 =	16 TREES
PROVIDED =	29 TREES (17 EXISTING)
5 GALLON SHRUBS = 0.02x55,147 =	33 SHRUBS
PROVIDED =	208 SHRUBS (118 EXISTING)

PARKING ANALYSIS

PARKING PROVIDED:	
STANDARD	= 173
HANDICAP	= 4
TOTAL	= 177 SPACES

SITE PLAN
VILLAGE
PLAZA
PREPARED FOR
CHISHOLM'S, LLC
LAS CRUCES
NEW MEXICO

DATE	PHASE
12/13/01	PROPOSAL
1/25/02	UPDATED
8/16/02	UPDATED

denton ventures, inc.
architecture • planning
2480 readrunner parkway
las cruces, nm 88011
office 505.525.0241
fax 505.525.9405
email dvi@zianet.com

RIO VISTA ENGINEERING
5260 Mimosa Lane
Las Cruces, New Mexico 88001
(505) 527-0645 (Voice & Fax)
Email: agarcia@zianet.com

Transportation • Drainage • Civil Design • Environmental

SHEET
1
D2181511

THE USE OF THESE PLANS & SPECS SHALL BE RESTRICTED TO THE ORIGINAL SITE FOR WHICH THEY WERE PREPARED & PUBLICATION THEREOF IS EXPRESSLY LIMITED TO SUCH USE. RE-USE, REPRODUCTION/PUBLICATION BY ANY METHOD, IN WHOLE OR IN PART, IS PROHIBITED. ALL TITLE & RIGHTS TO THE PLANS & SPECS REMAIN WITH DENTON VENTURES, INC. SUCH RIGHTS INCLUDE THE ARCHITECT'S COMMON LAW RIGHTS TO COPYRIGHT. IN ADDITION TO ANY STATUTORY COPYRIGHTS, VISUAL CONTACT WITH THESE PLANS AND SPECIFICATIONS SHALL CONSTITUTE PRIMA FACIE EVIDENCE OF THE ACCEPTANCE OF THESE RIGHTS AND RESTRICTIONS. ©

⊕ SURVEY POINT TO BE LOCATED BY PROPERTY OWNER'S SURVEYOR.