

111 E Central Ave

Spokane, WA 99208

Interim
Office/Medical
Space for Sublease



Property Features

- Main floor: 2,310SF ± plus a full basement
- Two lots totaling 15,000SF ±
- 34 total car parks (12 paved and 22 unpaved)
- Currently occupied by Spokane Occupational Hand Therapy
- Space Available: February 1, 2017
 - Sublease available until December 1, 2017
- Forced air gas, heat and A/C
- Year Built: 1964/Year Remodeled: 2012
- Great location near Providence Holy Family Hospital
- Zoning: OR55
- Parcel Numbers: 36322.1109 and 36322.1110

Sublease Rate:
\$2,000 Mod. Net

For more information, contact:

Mark McLees

509 622 3554 • mmclees@naiblack.com

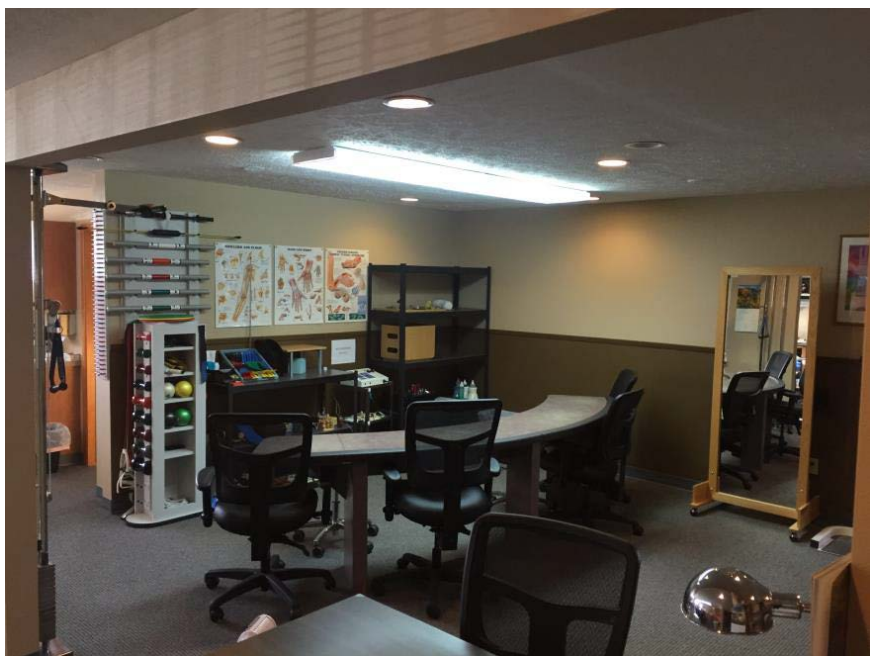
Michael Di Lucca

509 622 3573 • mike.dilucca@naiblack.com

NO WARRANTY OR REPRESENTATION, EXPRESS OR IMPLIED, IS MADE AS TO THE ACCURACY OF THE INFORMATION CONTAINED HEREIN, AND THE SAME IS SUBMITTED SUBJECT TO ERRORS, OMISSIONS, CHANGE OF PRICE, RENTAL OR OTHER CONDITIONS, PRIOR SALE, LEASE OR FINANCING, OR WITHDRAWAL WITHOUT NOTICE, AND OF ANY SPECIAL LISTING CONDITIONS IMPOSED BY OUR PRINCIPALS NO WARRANTIES OR REPRESENTATIONS ARE MADE AS TO THE CONDITION OF THE PROPERTY OR ANY HAZARDS CONTAINED THEREIN OR ANY TO BE IMPLIED.

Black Commercial, Inc.
107 S. Howard, Suite 500
Spokane, WA 99201
+1 509 623 1000
naiblack.com

111 E Central Ave



For more information, contact:

Mark McLees

509 622 3554 • mmclees@naiblack.com

Michael Di Lucca

509 622 3573 • mike.dilucca@naiblack.com



