

Fully furnished 9,000 sf suite with private offices and large bullpen available.

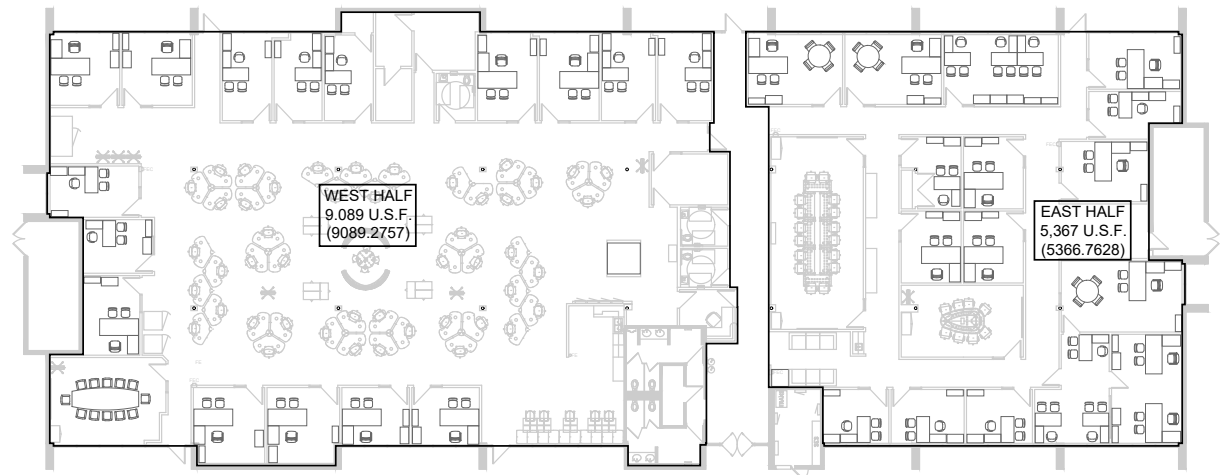
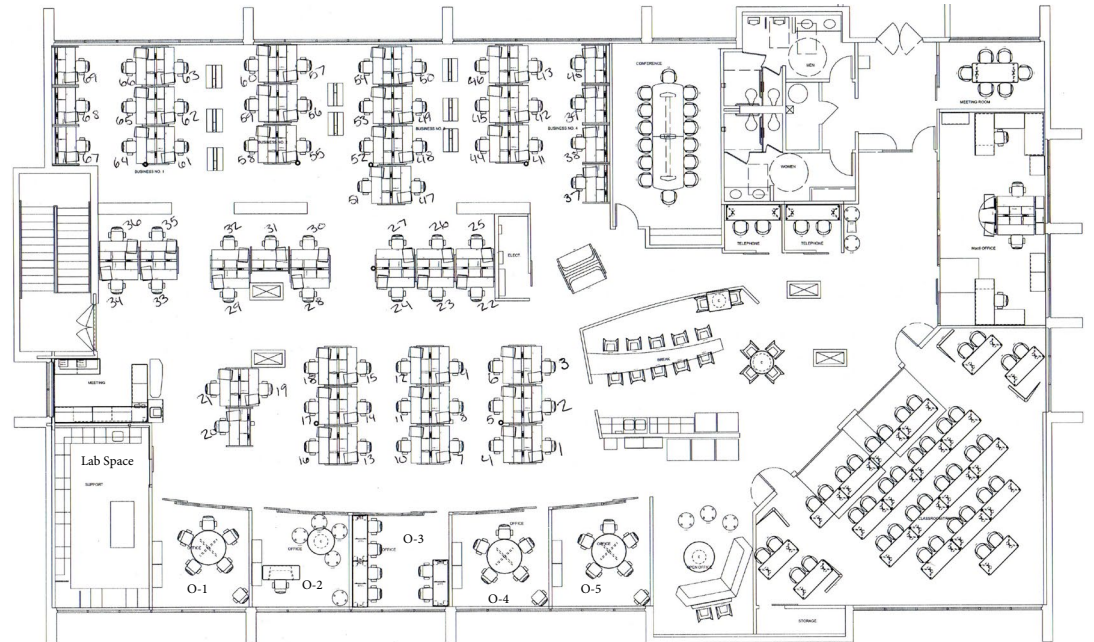
- Individual desks and private offices
- Can accommodate businesses from 1- 70 employees

We pay high broker commissions!

10%: Year 1

3%: Years 2-3

2%: Renewals



Space type	Pricing starting at
------------	---------------------

Virtual office	\$59/month
----------------	------------

Flex desk	\$129/month
-----------	-------------

Dedicated desk	\$375/month
----------------	-------------

Private office	\$599/month
----------------	-------------

Office suite	\$1,999/month
--------------	---------------

Co-manufacturing	On request
------------------	------------

3-6 ksf spaces	On request
----------------	------------



View virtual tour



The MAC⁶ Tempe, AZ Entrepreneurial Campus offers three unique coworking environments for entrepreneurs, growing businesses and professional service providers.



1 Desk+ workspace

- Full service private suites range from 1,500 to 9,000 sf serving 10 to 75 employees
- Community Membership options include private offices and dedicated / flex desks starting at \$129 per month

2 Growth+ workspace

- Growth+ offers 10,000 square feet of semi-private coworking suites for growth-oriented businesses ranging from 5 to 25 employees
- Community Membership options include unique combinations of private offices and robust workspace solutions starting at \$1,999 per month

3 Privacy+ workspace

- Privacy+ (un-executive suites) offers 5,000 sf of private office solutions for professional service providers and smaller businesses with enhanced security requirements
- Community Membership options range from one to several private offices starting at \$599 per month

4 Virtual+ office

- A professional image, without paying for a desk. Get mail and an address in the center of Tempe starting at \$59 per month

Member amenities



Guarantee
MAC⁶ offers leases you can break in some circumstances. Literally. It's in the contract.



Technology
Work better with fiber internet, VOIP phone capabilities, on-site IT, and printing, copying and scanning, all included in your rent.



On-site management
On-site management with nightly security and a notary.



Networking
Weekly lunches and other events, along with events from outside community partners.



Healthy space
We encourage health with a 24/7 gym (with trainer), Cartel cold brew coffee, and FloWater systems in each space.



Organizational growth
Programs to help your values-driven culture support profit and purpose in a people-centric system.

Introduce us to your tenants and we'll take care of the rest. Call for your broker commission today!

Drew Sampson | 602 820 3877