



SAN FRANCISCO, CA 94107

# 1465 Bush St.

**+/- 2,900 SF**  
**2nd Floor Creative**  
**Live/Work Office**  
**for Sublease**

## **MARIO PREVITALI**

Senior Vice President  
Email: [mario@calco-sf.com](mailto:mario@calco-sf.com)  
Cell: 415.755.8905  
DRE #01902075

## **DAULTON JEFFERIES**

Associate  
Email: [daulton@calco-sf.com](mailto:daulton@calco-sf.com)  
Cell: 209.326.2358  
DRE #02261417



**We're Here to Help – Reach Out Today!**

425 2nd St. Suite 450, San Francisco, CA 94107 | [info@calcosf.com](mailto:info@calcosf.com) | (415) 970-0000 | [calcosf.com](http://calcosf.com)

# PROPERTY DETAILS

| 1465 Bush St.

## SPACE FEATURES:

- +/- 2,900 SF Sublease
- Exp Date July 2026
- Exposed Brick w/ High Ceilings
- Bright Dual Sided Windowline
- Full HVAC
- Parking Available
- Modern Kitchenette
- Private Restrooms with ADA Shower

### MARIO PREVITALI

Senior Vice President

Email: [mario@calco-sf.com](mailto:mario@calco-sf.com)

Cell: 415.755.8905

DRE #01902075

### DAULTON JEFFERIES

Associate

Email: [daulton@calco-sf.com](mailto:daulton@calco-sf.com)

Cell: 209.326.2358

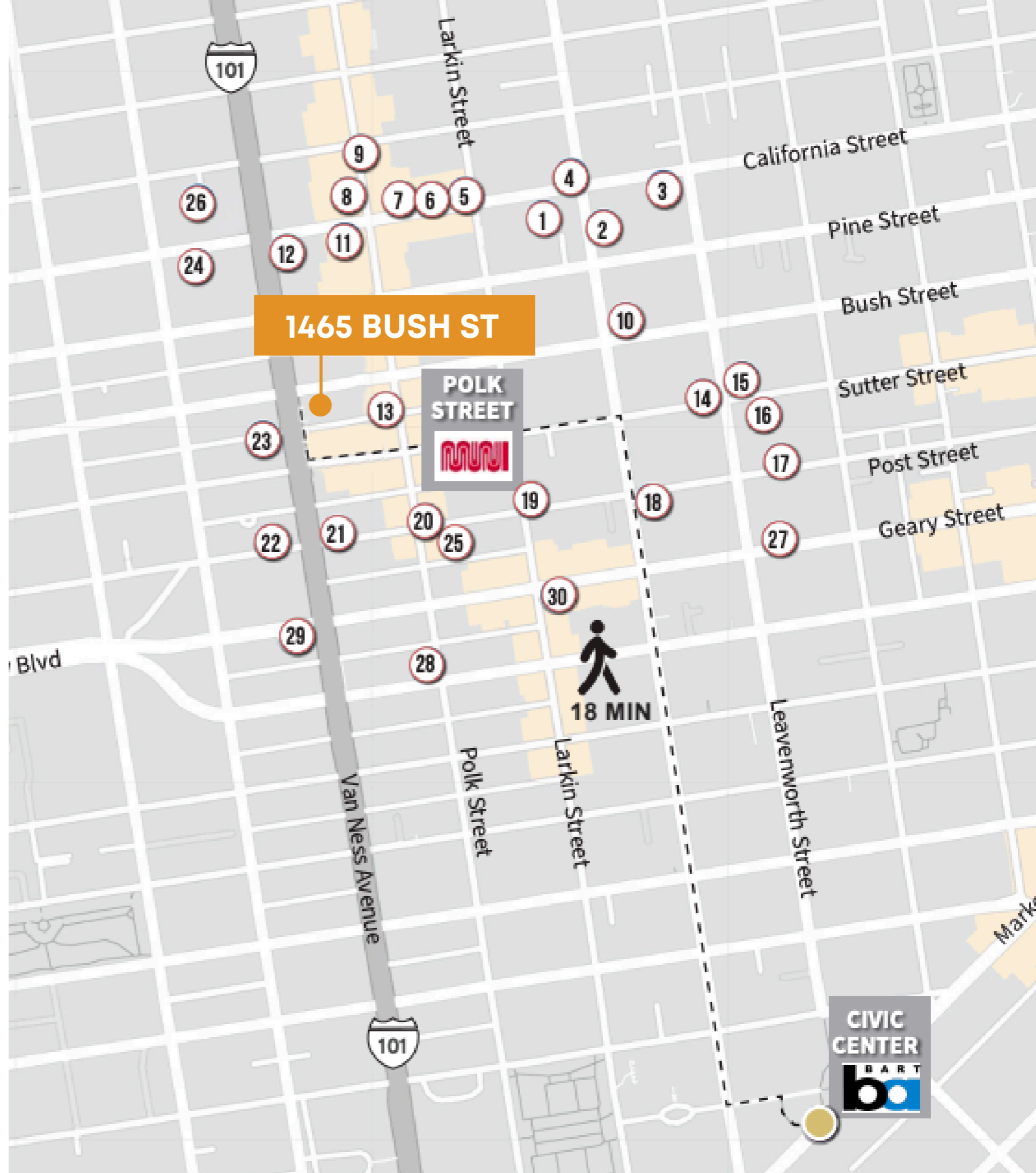
DRE #02261417



# NEARBY AMENITIES

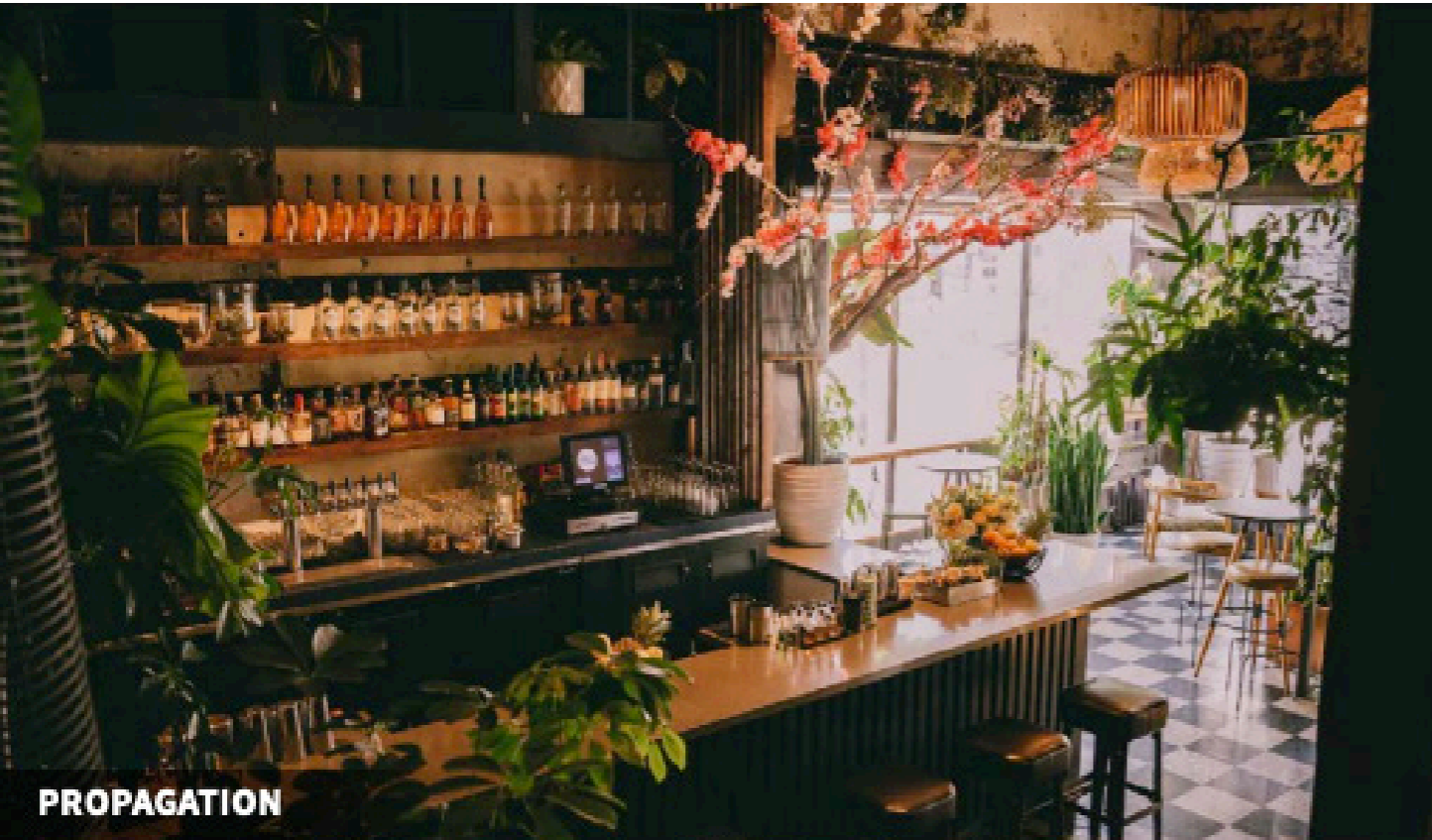
## | 1465 Bush St.

1. Trader Joe's
2. Nourish Cafe
3. Zeki's Bar
4. Ciccino
5. Mymy
6. Nobhill Pizza & Shawarma
7. Cordon Bleu Vietnamese
8. Swan Oyster Depot
9. Ora Wine Bar
10. Saint Francis Hospital
11. Crustacean Restaurant
12. Teaspoon
13. Mayes Oyster House
14. Bite
15. Chisme Cantina
16. Liholiho Yacht Club
17. Farm: Table
18. Propagation
19. Members Only
20. Jackalope
21. Hour Fitness
22. Fedex Print & Ship Center
23. Bevmo!
24. Whole Foods Market
25. Kuma Sushi + Sake
26. Guitar Center
27. Mensho Tokyo Sf
28. Ike's Sandwiches
29. Tommy's Joynt
30. Lers Ros



# NEARBY AMENITIES

| 1465 Bush St.



**PROPAGATION**



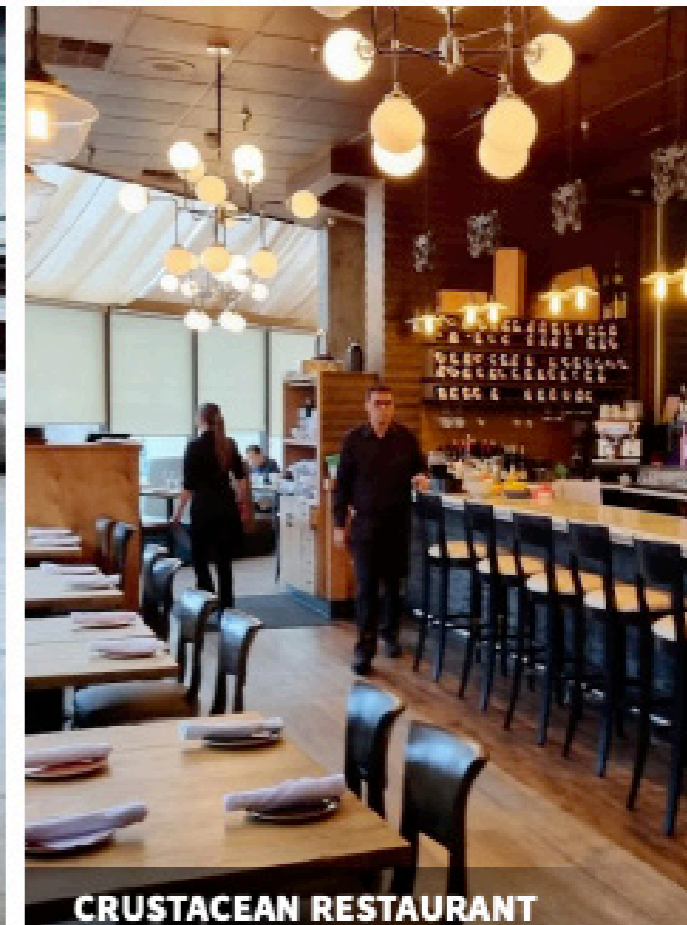
**LIHOLIHO YACHT CLUB**



**MENSHO TOKYO**



**CICCINO**



**CRUSTACEAN RESTAURANT**



**MARIO PREVITALI**

Senior Vice President  
Email: [mario@calco-sf.com](mailto:mario@calco-sf.com)  
Cell: 415.755.8905  
DRE #01902075

**DAULTON JEFFERIES**

Associate  
Email: [daulton@calco-sf.com](mailto:daulton@calco-sf.com)  
Cell: 209.326.2358  
DRE #02261417

## **PIONEERING REAL ESTATE SOLUTIONS WITH PROVEN EXPERTISE**

Calco Commercial, founded in 2011 by Scott Mason, brings over 35 years of experience and 2,500+ transactions, totaling over \$2.2 billion in sales and leases. Specializing in leasing and sales of commercial real estate in the San Francisco Bay Area and nationwide, we consistently rank as a top-producing firm. With deep knowledge of the Bay Area market, our team offers clients over three decades of expertise and exceptional customer service, providing the tools and guidance to navigate the ever-changing commercial real estate landscape.