

FOR LEASE



555 HERNDON PARKWAY
HERNDON, VA 20170



Features:

- Conveniently located on Herndon Parkway with Dulles Toll Road frontage
- Walking distance to Courtyard Marriott
- On-site showers, locker facilities, and deli
- Atrium lobby with glass ceiling providing natural light
- First floor covered loading dock area
- Herndon Metro Station opening in 2018

Availability

First Floor - Suite 135

Second Floor - Suite 240

Second Floor - Suite 280

Size

5,614 SF

3,995 SF

2,064 SF

For leasing information:

Andy Klaff

Jeff Tarae

Kat Pelonero

703.918.0211

703.918.0205

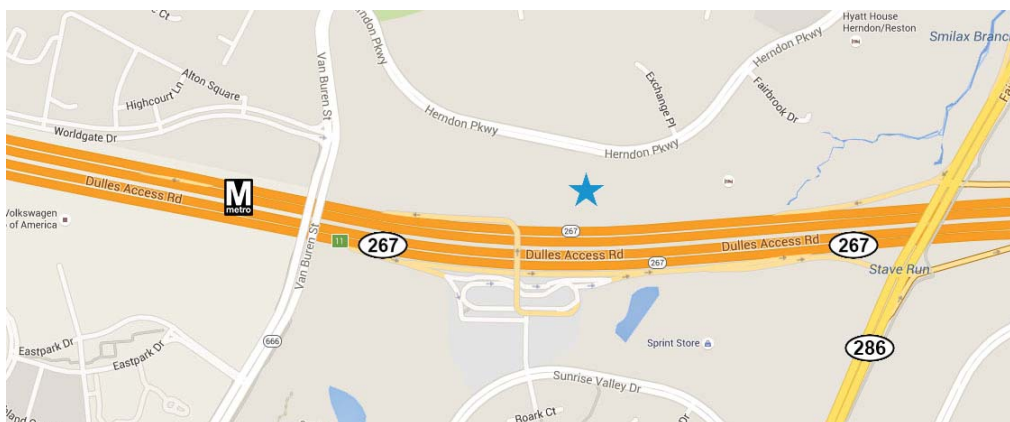
703.918.0216

andy.klaff@ngkf.com

jeff.tarae@ngkf.com

kat.pelonero@ngkf.com

Location



1410 Spring Hill Road, Suite 600, McLean, VA 22102

ngkf.com

Newmark Grubb
Knight Frank

Procuring broker shall only be entitled to a commission, calculated in accordance with the rates approved by our principal only if such procuring broker executes a brokerage agreement acceptable to us and our principal and the conditions as set forth in the brokerage agreement are fully and unconditionally satisfied. Although all information furnished regarding property for sale, rental, or financing is from sources deemed reliable, such information has not been verified and no express representation is made nor is any to be implied as to the accuracy thereof and it is submitted subject to errors, omissions, change of price, rental or other conditions, prior sale, lease or financing, or withdrawal without notice and to any special conditions imposed by our principal.

FOR LEASE

555 HERDON PARKWAY
HERNDON, VA 20170

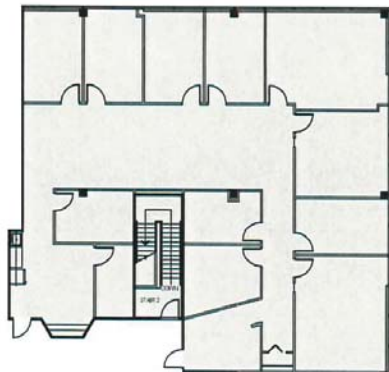


First Floor - Suite 135 (Potential Buildout) 5,614 SF



Second Floor

Suite 240 3,995 SF



Suite 280 2,064 SF

