

# ±102,960 SF FOR SUBLEASE



1085 ALPER CENTER DR., SUITES 110-130 | HENDERSON, NV 89052

**JASON SIMON, SIOR**

Executive Managing Director  
+1 702 522 5001  
jason.simon@jll.com  
NV Lic. #S.0045593

**ROB LUJAN, SIOR, CCIM**

Executive Managing Director  
+1 702 522 5002  
rob.lujan@jll.com  
NV Lic. #S.0051018

**DANNY LEANOS**

Vice President  
+1 702 522 5008  
danny.leanos@jll.com  
NV Lic. #S.0191773

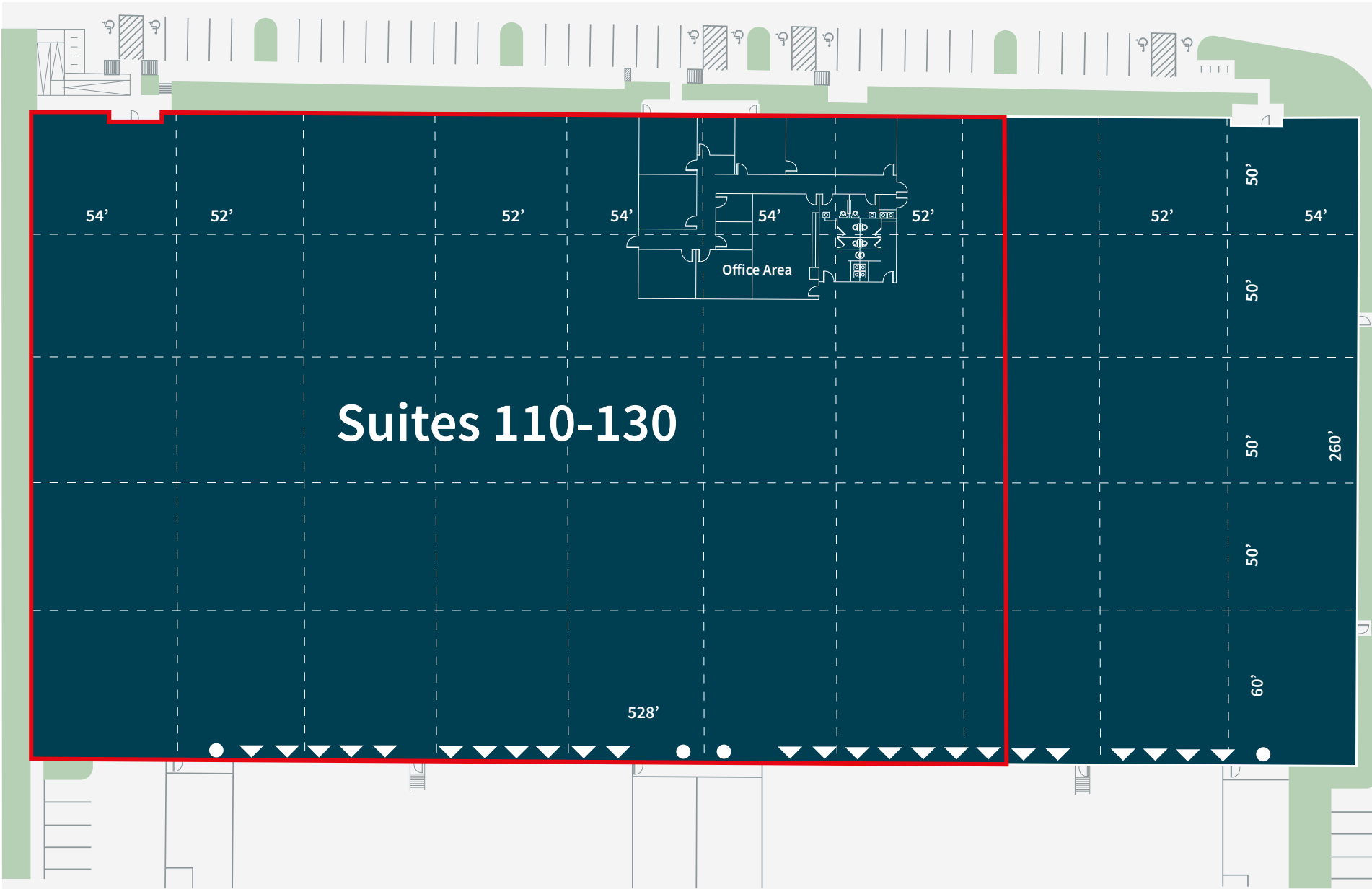
**BRAYDEN STOCKBAUER**

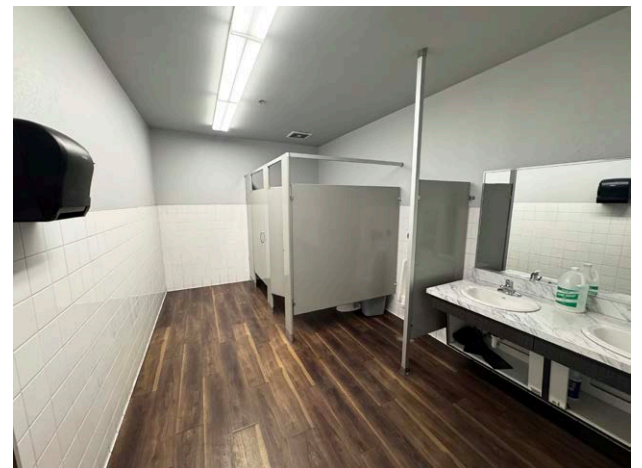
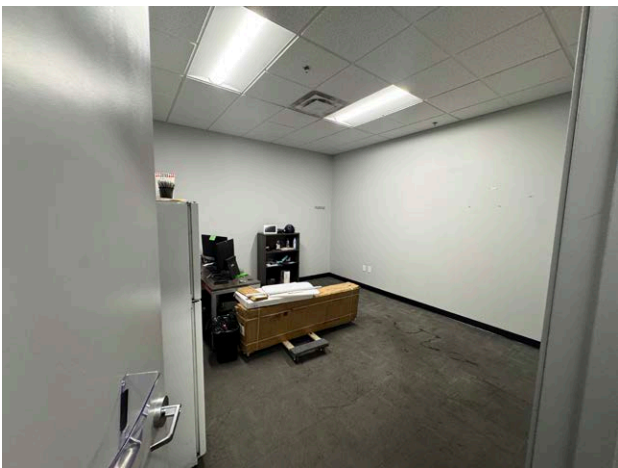
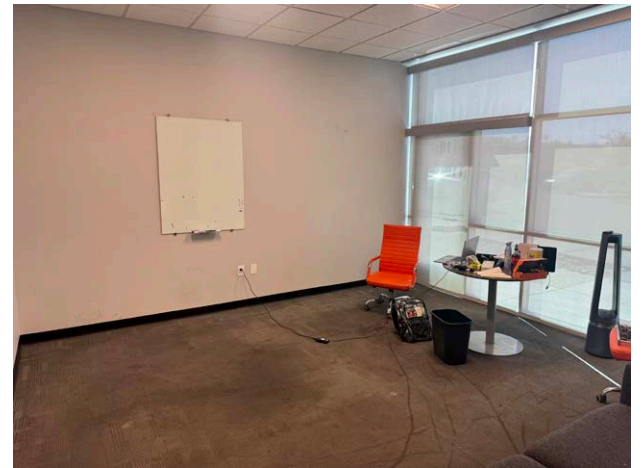
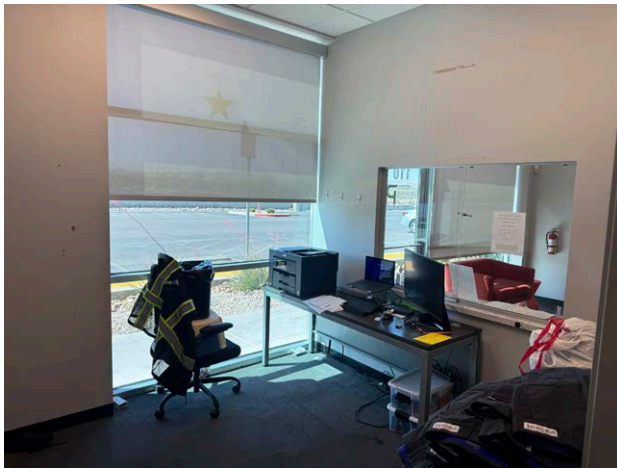
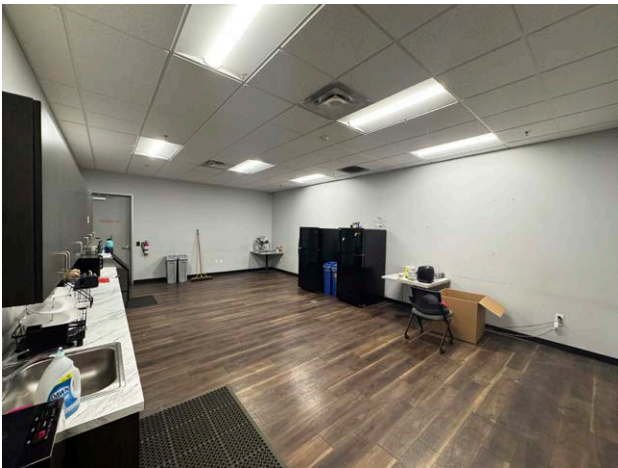
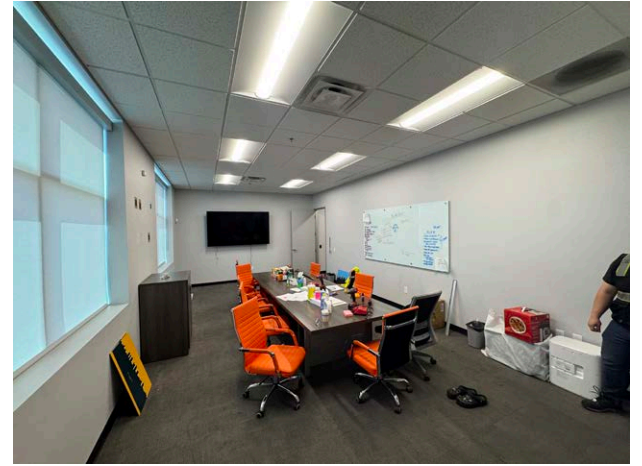
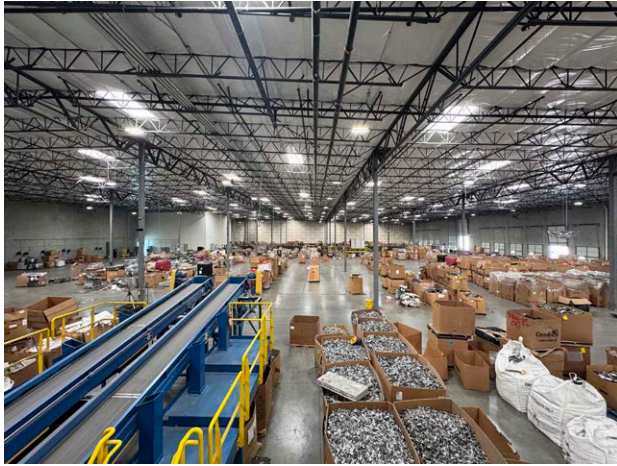
Associate  
+1 702 522 5114  
brayden.stockbauer@jll.com  
NV Lic. #S.0203930





# FLOOR PLAN







amazon



# LOCATOR MAP



## INTERESTED IN MORE INFORMATION?

### **JASON SIMON, SIOR**

Executive Managing Director  
+1 702 522 5001  
jason.simon@jll.com  
NV Lic. #S.0045593

### **ROB LUJAN, SIOR, CCIM**

Executive Managing Director  
+1 702 522 5002  
rob.lujan@jll.com  
NV Lic. #S.0051018

### **DANNY LEANOS**

Vice President  
+1 702 522 5008  
danny.leanos@jll.com  
NV Lic. #S.0191773

### **BRAYDEN STOCKBAUER**

Associate  
+1 702 522 5114  
brayden.stockbauer@jll.com  
NV Lic. #S.0203930

Although information has been obtained from sources deemed reliable, JLL does not make any guarantees, warranties or representations, express or implied, as to the completeness or accuracy as to the information contained herein. Any projections, opinions, assumptions or estimates used are for example only. There may be differences between projected and actual results, and those differences may be material. JLL does not accept any liability for any loss or damage suffered by any party resulting from reliance on this information. If the recipient of this information has signed a confidentiality agreement with JLL regarding this matter, this information is subject to the terms of that agreement. ©2026 Jones Lang LaSalle Brokerage, Inc. All rights reserved.

