



Harlow Heights

4351 15TH AVE S, SEATTLE, WA 98108

OFFERING BROCHURE

**STABILIZED, NEW CONSTRUCTION MULTIFAMILY
INVESTMENT WITH MANAGEABLE UPSIDE**



**CUSHMAN &
WAKEFIELD**
MULTIFAMILY CAPITAL MARKETS

EXECUTIVE SUMMARY

*Cushman & Wakefield Multifamily Capital Markets is pleased to present an exclusive opportunity to acquire **Harlow Heights**, a newer construction, institutional-quality asset in one of Seattle's most supply-constrained urban neighborhoods, combining durable in-place cash flow with clear, steady upside.*

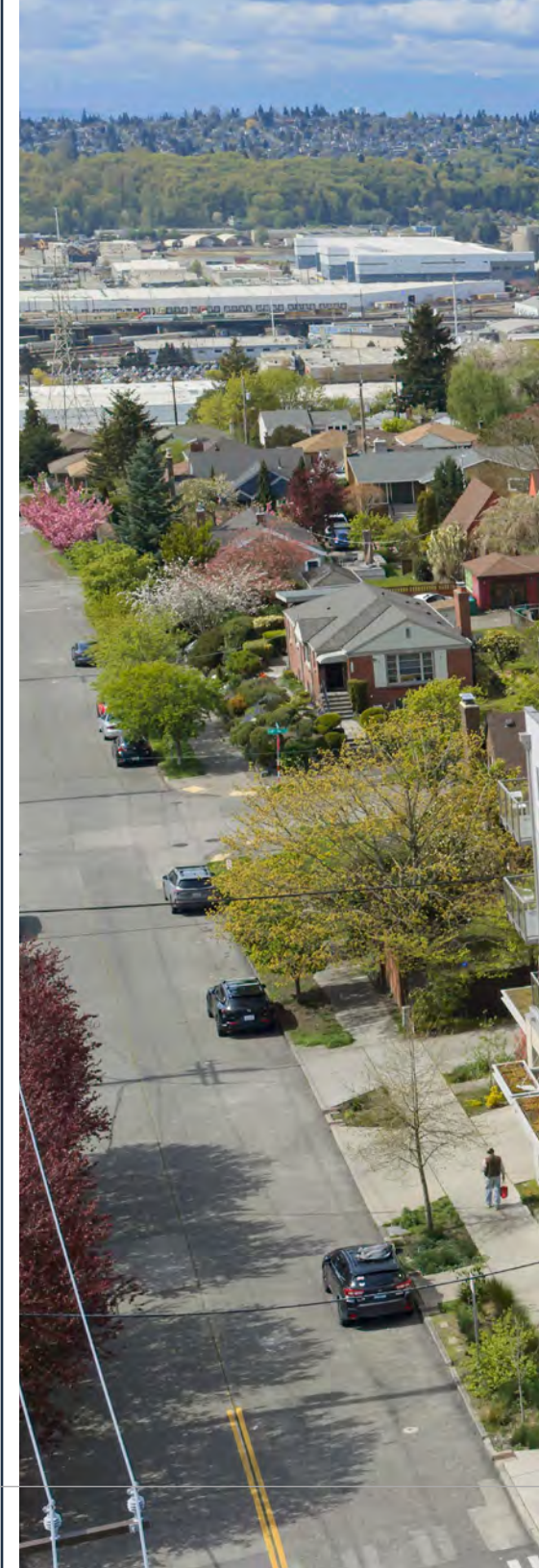
The investment is anchored by high-quality construction, large unit layouts, and structured parking, all of which differentiate the asset from the surrounding housing stock in Beacon Hill. Combined with west-facing views toward Puget Sound and the Olympic Mountains, the property delivers a level of product quality that is difficult to replicate today—particularly at its basis.

Investors benefit from below-market in-place rents with a clear path to mark units to market through natural lease rollover, alongside additional upside from operational optimization and ancillary income expansion - including parking, utility reimbursements, and in-place commercial income. With limited near-term capital requirements, the asset provides a clean, predictable cash flow profile with multiple levers to drive NOI growth over time.

Harlow Heights is offered well below replacement cost, in a submarket where new development is effectively stalled due to elevated construction costs and entitlement challenges. This creates a compelling setup where existing assets are positioned to capture future rent growth without new competitive supply, supporting long-term NOI expansion and value appreciation.

PROPERTY SUMMARY

Purchase Price	Determined by Market
Property Address	4351 15th Ave S, Seattle, WA 98108
Submarket	Beacon Hill
Parcel	367940-0970
Site Size	14,480 SF (0.33 acres)
Zoning	NC1-55 (M)
Buildings	1
Units	39
Year Built	2016
Rentable Area	24,789 SF (Resi) + 5,712 SF (Comm) = 30,501 NRSF
Avg Unit Size	636 SF
Parking	33 spaces
Unit Mix	Studio (15.4%), Open 1BD/1BA (46.2%), 1BD/1BA (15.4%), 2BD/2BA (23.1%)



STABILIZED NEW CONSTRUCTION WITH MANAGEABLE UPSIDE







INVESTMENT HIGHLIGHTS

~\$200K NOI UPSIDE THROUGH SIMPLE OPERATIONAL IMPROVEMENTS

- Control vacancy and bad debt to market levels, capture ~6.5% mark-to-market on in-place rents, and reduce expenses by appealing taxes to the new purchase price

NEWER CONSTRUCTION, MINIMAL CAPEX

- Modern systems, efficient layouts, and high-quality finishes reduce near-term capital needs
- Supports consistent, predictable operations

LARGE UNIT PREMIUM

- Larger-than-market unit sizes appeal to a broader renter pool (professionals, roommates, families)
- Differentiates from smaller-format product across Seattle

BELOW REPLACEMENT COST BASIS

- Significant cost to replicate similar product in today's environment
- Provides downside protection and positions ownership to benefit from future rent growth

STABLE, DIVERSIFIED INCOME STREAM

- Long-term commercial tenants provide consistent, non-residential income
- Structured parking and other ancillary income streams create additional yield

OPERATIONAL EFFICIENCY

- Clean ownership profile with limited deferred maintenance
- Scalable, efficient management relative to older vintage assets

LOCATION HIGHLIGHTS

ONE OF SEATTLE'S MOST UNDERSUPPLIED URBAN SUBMARKETS

- Limited development pipeline with virtually no new competing supply
- Barriers to entry driven by zoning, topography, and rising construction costs

PROXIMITY TO DOWNTOWN & EMPLOYMENT CENTERS

- Minutes to Downtown Seattle, SODO, and major employment hubs
- Strong appeal to renters seeking urban access without core pricing

LIGHT RAIL CONNECTIVITY

- Direct access via Beacon Hill light rail station
- Seamless connectivity to Downtown, Capitol Hill, UW, and SeaTac Airport

NEIGHBORHOOD TRANSFORMATION WITH STAYING POWER

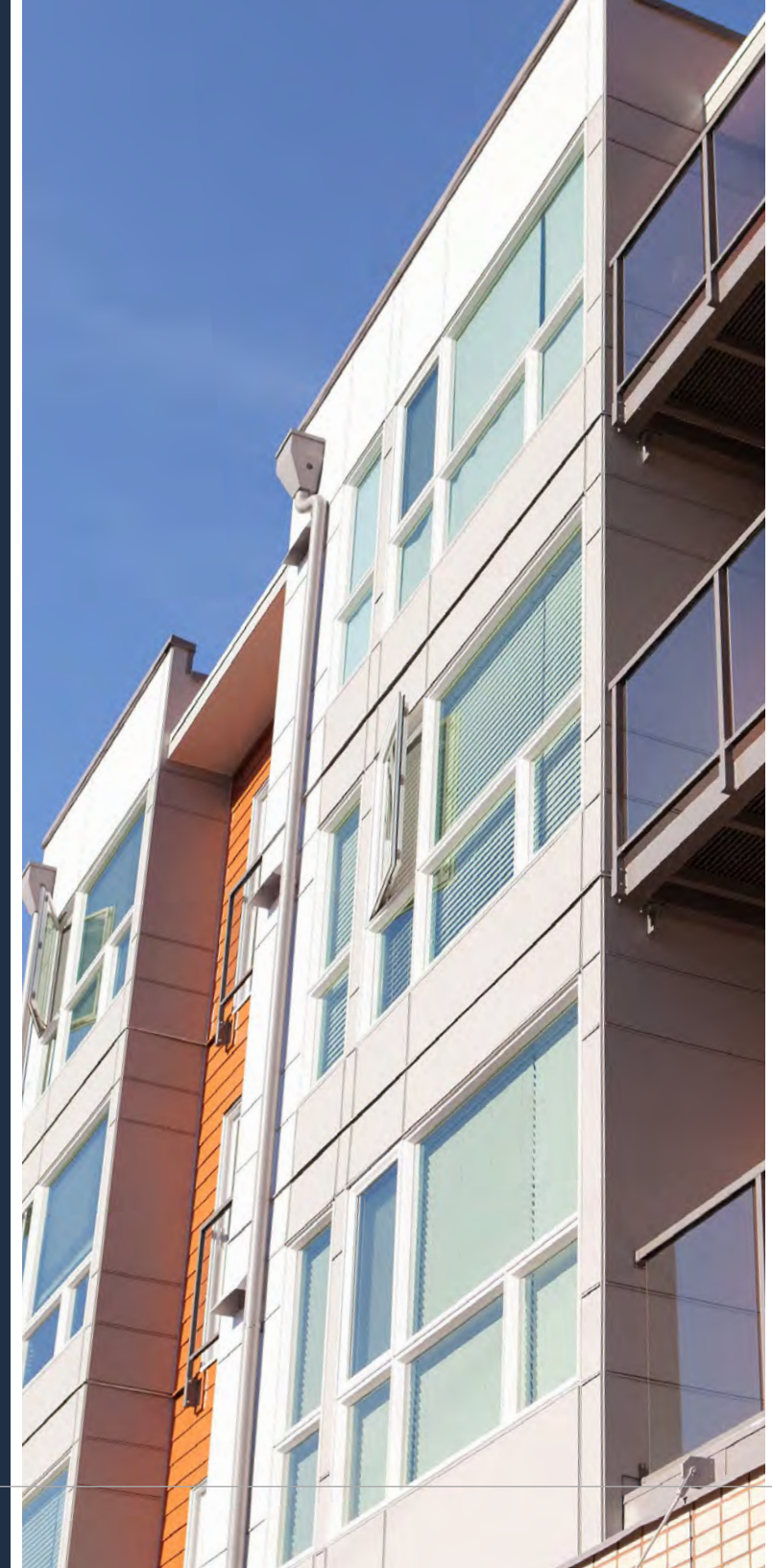
- Continued growth in retail, dining, and neighborhood amenities
- Increasing desirability as a residential alternative to higher-priced core neighborhoods

VIEW-ORIENTED TOPOGRAPHY

- Elevated positioning delivers sweeping west-facing views of Puget Sound and the Olympics
- Creates a lasting competitive advantage that cannot be replicated

DIVERSE, RESILIENT RENTER BASE

- Appeals to a mix of young professionals, families, and long-term residents
- Consistent demand profile across market cycles







SECURE PARKING GARAGE



EXPANSIVE SUNDECK

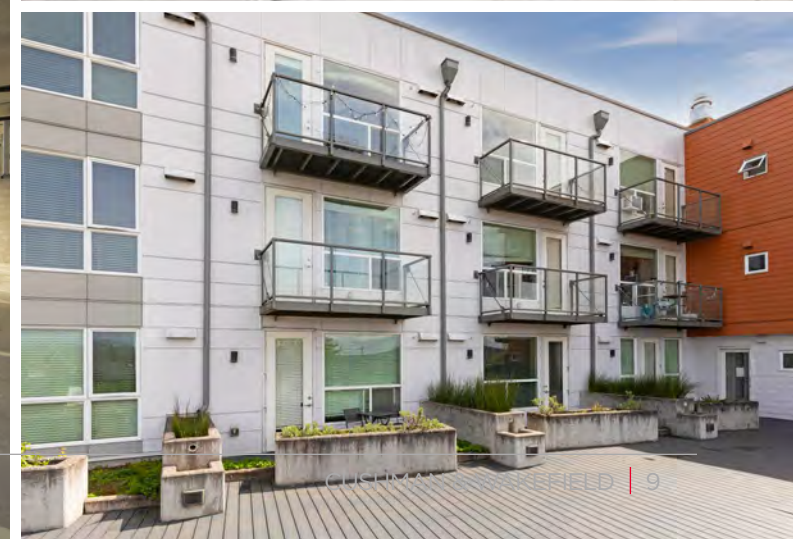




LONG TERM COMMERCIAL TENANTS



33 TOTAL PARKING SPACES





Harlow Heights

EXCLUSIVE ADVISORS

MULTIFAMILY CAPITAL MARKETS

DEAL LEADS

TIM MCKAY

Managing Director
+1 206 369 7599
Tim.McKay@cushwake.com

MATT KEMPER

Senior Director
+1 206 877 3378
Matt.Kemper@cushwake.com

DYLAN ROETER

Senior Associate
+1 425 445 0071
Dylan.Roeter@cushwake.com

DAN CHHAN

Managing Director
+1 206 321 2047
Dan.Chhan@cushwake.com

BYRON ROSEN

Director
+1 206 819 4488
Byron.Rosen@cushwake.com

EQUITY, DEBT, & FINANCING

DAVID KARSON

Executive Vice Chair
+1 203 550 1441
Dave.Karson@cushwake.com

CHRIS MOYER

Executive Managing Director
+1 570 764 1335
Chris.Moyer@cushwake.com

JOHN SPREITZER

Senior Director
+1 908 295 1953
John.Spreitzer@cushwake.com