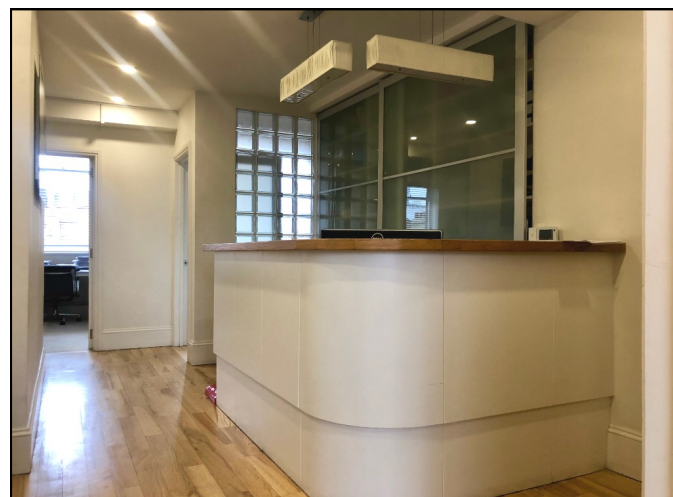


143 New Bond Street, London W1

Economical, Fitted Office To Let

5th Floor — 864 sq ft (80m²)



Description

- Fitted & cabled
- Excellent natural light
- Wooden floor
- Kitchenette
- Passenger lift
- WCs

143 New Bond Street, London W1

Location

This prominent building is situated on the west side of New Bond Street between the junctions with Grosvenor Street and Bruton Street. Bond Street (Jubilee, Central and Elizabeth line [2019]), Oxford Circus (Bakerloo, Victoria and Central lines) and Green Park (Jubilee and Piccadilly lines) underground stations are all located close by.

Description

The available accommodation has a net internal area of 864 sq ft and is on the 5th floor of the building, offering good quality, fitted office accommodation. There are 2 large executive offices, with an open plan area, boardroom, reception & kitchenette.

Lease

A new lease is available for a term by arrangement direct from the Landlord or a sublease to March 2020.

Rent

£60,048 per annum exclusive (£69.50 per sq ft).

Business Rates

£19,518 per annum (£22.59 per sq ft). Interested parties are invited to make their own enquiries with the appropriate council.

Service Charge

£6,558 per annum (£7.59 per sq ft).

Occupational Costs

£7,140 per calendar month.



For further information or to
arrange a viewing please
contact the sole agents:

Crossland Otter Hunt

Phil Frenay
phil@coh.eu

Jess Flather
jessica@coh.eu

01/20