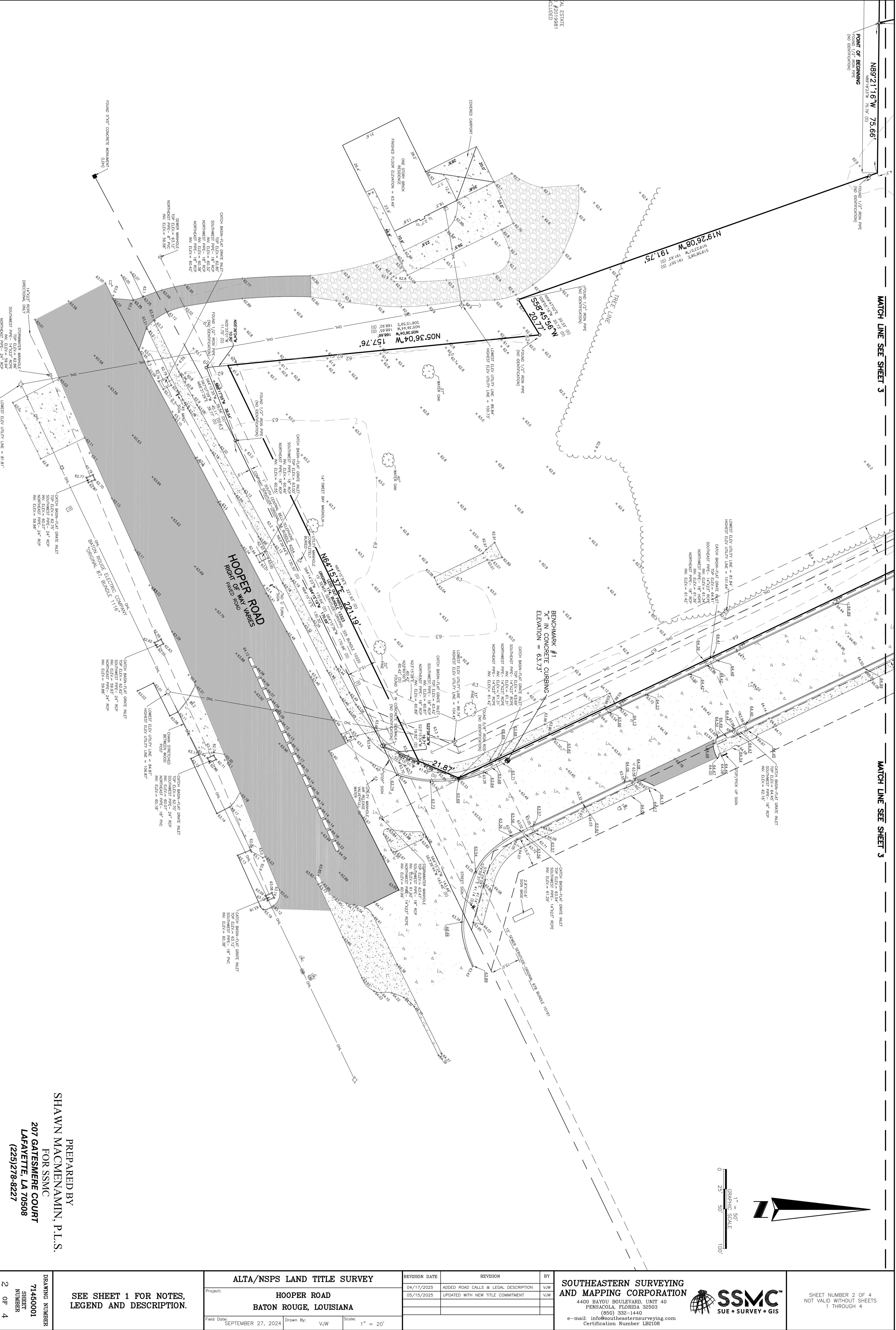


POINT OF BEGINNING
 NB9°21'16"W 75.66'
 N89°18'23"W 75.79' (0)
 (NO IDENTIFICATION)

MATCH LINE SEE SHEET 3

MATCH LINE SEE SHEET 3

M58°45'59"W 191.75'
 N19°26'08"W 191.75'
 S19°26'08"W 191.75'
 N16°22'01"W 191.75'
 N191°52'57" (0)
 (NO IDENTIFICATION)

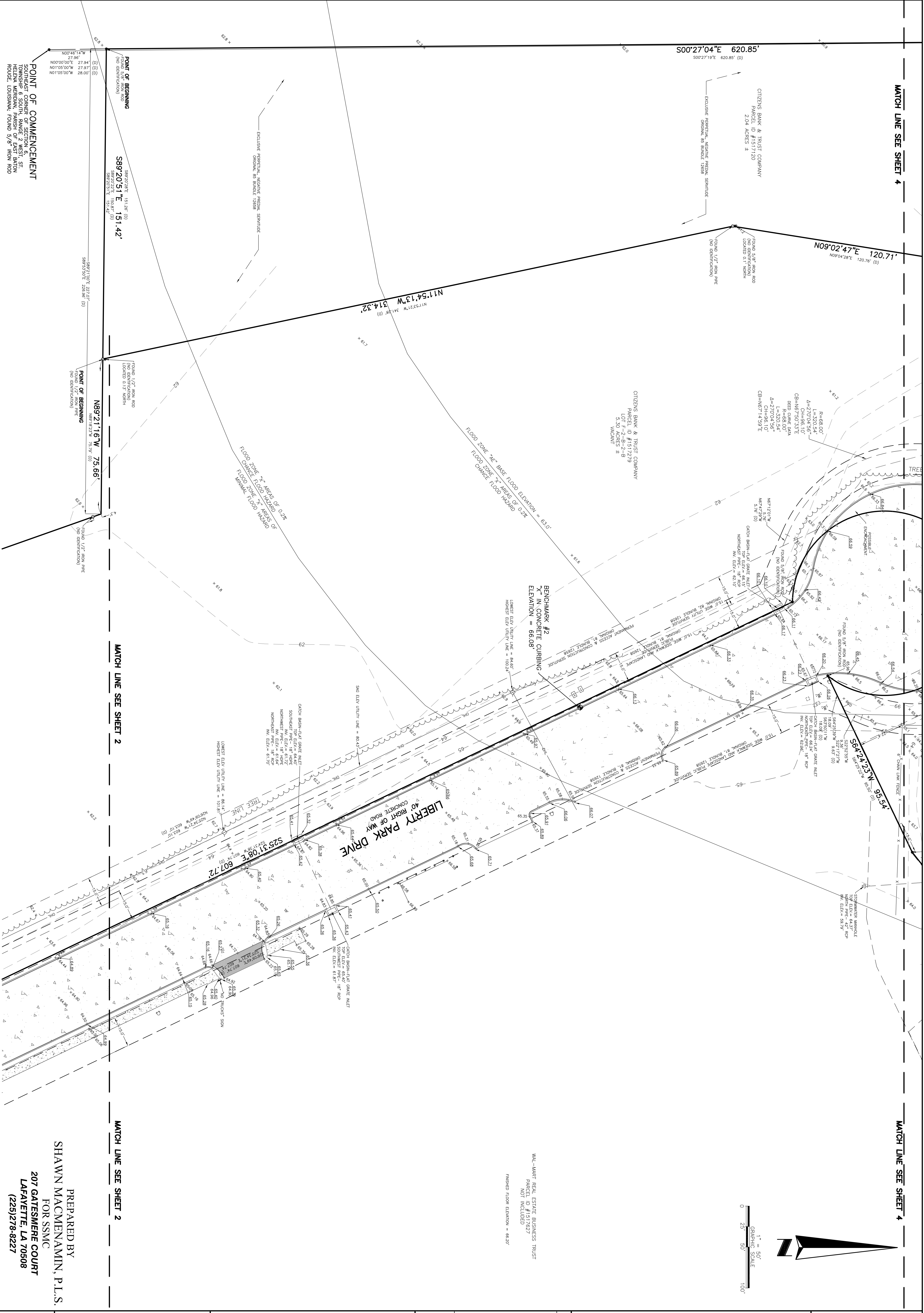


PREPARED BY
 SHAWN MACMENNAMIN, P.L.S.
 FOR SSMC
 207 GATESMERE COURT
 LAFAYETTE, LA 70508
 (225)278-8227

DRAWING NUMBER 71450001 SHEET NUMBER 2 OF 4	SEE SHEET 1 FOR NOTES, LEGEND AND DESCRIPTION.	ALTA/NSPS LAND TITLE SURVEY		Project:	HOOPER ROAD BATON ROUGE, LOUISIANA		Field Date:	SEPTEMBER 27, 2024	Drawn By:	VJW	Scale:	1" = 20'
		REVISION DATE	REVISION	BY								
		04/17/2025	ADDED ROAD CALLS & LEGAL DESCRIPTION	VJW								
		05/15/2025	UPDATED WITH NEW TITLE COMMITMENT	VJW								
				SOUTHEASTERN SURVEYING AND MAPPING CORPORATION		4400 BAYOU BOULEVARD, UNIT 40 PENSACOLA, FLORIDA 32503 (904) 352-1440 e-mail: info@southestersurveying.com Certification Number LB2108				 SUE • SURVEY • GIS		SHEET NUMBER 2 OF 4 NOT VALID WITHOUT SHEETS 1 THROUGH 4

MATCH LINE SEE SHEET 4

MATCH LINE SEE SHEET 4



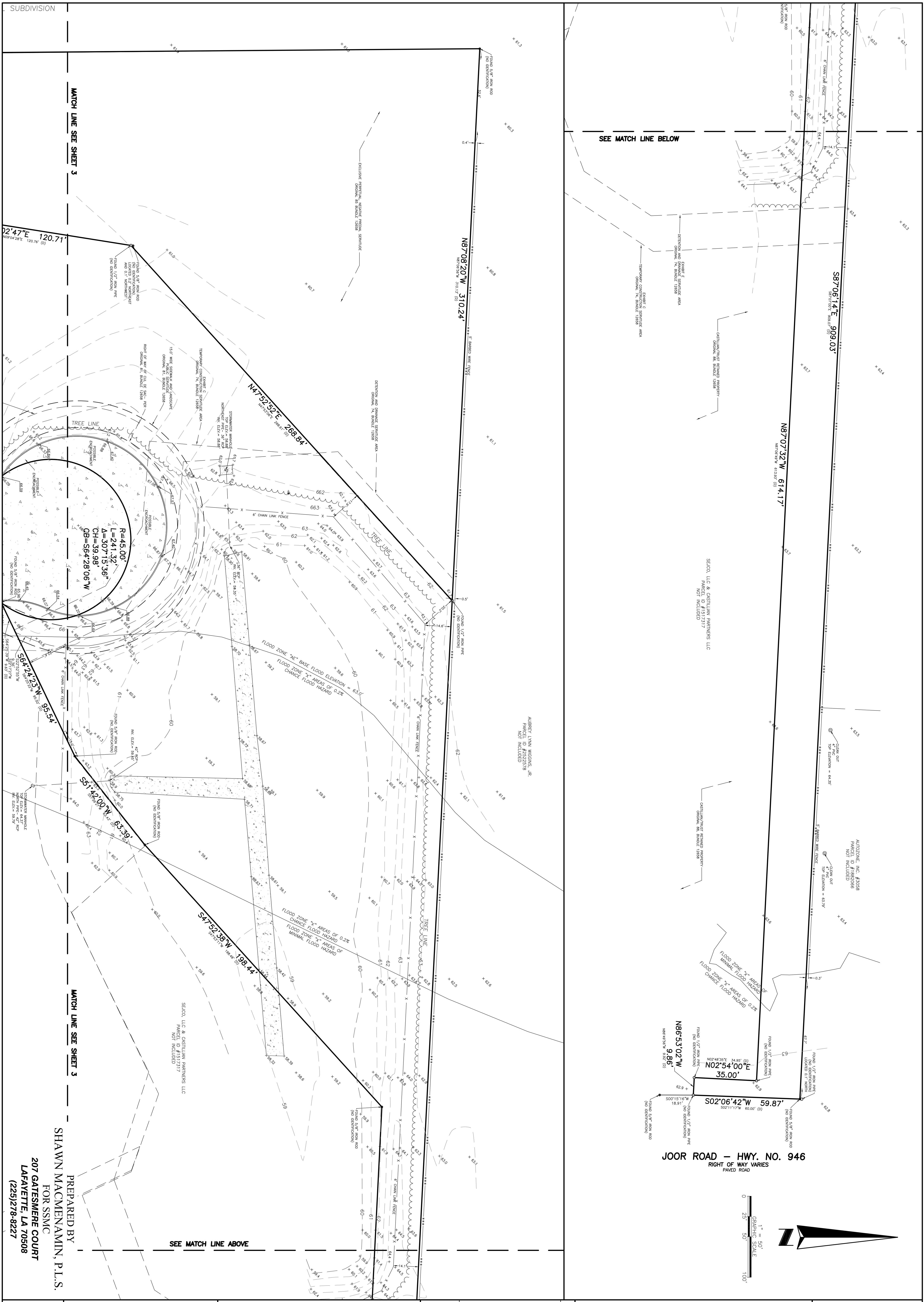
MATCH LINE SEE SHEET 2

MATCH LINE SEE SHEET 2

POINT OF COMMENCEMENT
 CORNER OF SECTION 6 & 7
 TOWNSHIP 12 NORTH
 RANGE 10 WEST
 PARISH OF EAST BATON
 ROUGE, LOUISIANA, FOUND 5/8" IRON ROD

PREPARED BY
 SHAWN MACMENAMIN, P.L.S.
 FOR SSMC
 207 GATESMERE COURT
 LAFAYETTE, LA 70508
 (225)278-8227

DRAWING NUMBER 71450001 SHEET NUMBER 3 OF 4	SEE SHEET 1 FOR NOTES, LEGEND AND DESCRIPTION.	ALTA/NSPS LAND TITLE SURVEY		REVISION DATE 04/17/2025	REVISION ADDED ROAD CALLS & LEGAL DESCRIPTION	BY VJW	SOUTHEASTERN SURVEYING AND MAPPING CORPORATION 4400 BAYOU BOULEVARD, UNIT 40 PENSACOLA, FLORIDA 32503 (904) 332-1440 e-mail: info@southeasternsurveying.com Certification Number LB2108		SHEET NUMBER 3 OF 4 NOT VALID WITHOUT SHEETS 1 THROUGH 4
		Project: HOOPER ROAD BATON ROUGE, LOUISIANA	Field Date: SEPTEMBER 27, 2024	Drawn By: VJW	Scale: 1" = 20'	FINISHED FLOOR ELEVATION = 66.20' WAL-MART REAL ESTATE BUSINESS TRUST PARCEL ID #1517827 NOT INCLUDED			



DRAWING NUMBER 71450001 SHEET NUMBER 4 OF 4	SEE SHEET 1 FOR NOTES, LEGEND AND DESCRIPTION.	ALTA/NSPS LAND TITLE SURVEY		REVISION DATE 04/17/2025	REVISION ADDED ROAD CALLS & LEGAL DESCRIPTION	BY VJW
		Project: HOOPER ROAD BATON ROUGE, LOUISIANA		05/15/2025	UPDATED WITH NEW TITLE COMMITMENT	VJW
Field Date: SEPTEMBER 27, 2024		Drawn By: VJW	Scale: 1" = 20'		SOUTHEASTERN SURVEYING AND MAPPING CORPORATION 4400 BAYOU BOULEVARD, UNIT 40 PENSACOLA, FLORIDA 32503 (850) 332-1440 e-mail: info@southeasternsurveying.com Certification Number LB2108	
PREPARED BY SHAWN MACMEENAMIN, P.L.S. FOR SSMC 207 GATESMERE COURT LAFAVETTE, LA 70508 (228)278-8227		SEE MATCH LINE ABOVE		SEE MATCH LINE BELOW		SHEET NUMBER 4 OF 4 NOT VALID WITHOUT SHEETS 1 THROUGH 4