

RANDOLPH SHOPPING CENTER

12255 Nebel Street, Rockville, MD 20852
Montgomery County



PROPERTY INFORMATION

- Suite 12261 | 4,016 SF
- Suite 12271 | 1,650 SF
- Lower Level Industrial Available
- Parking: 3.1/1,000
- Ceiling Height: 13 foot clear (14 to deck)
- Randolph SC sits in a vibrant retail corridor with convenient access to Rockville Pike (Rt. 355)
- Georgetown Rd: 0.2 Miles
- Rockville Pike: 0.5 Miles
- I-270: 2 Miles

LEASED BY:

klnb

Kenneth Fellows
301-222-0210
kfellows@klnb.com

Robert E. Pugh
301-222-0211
rpugh@klnb.com

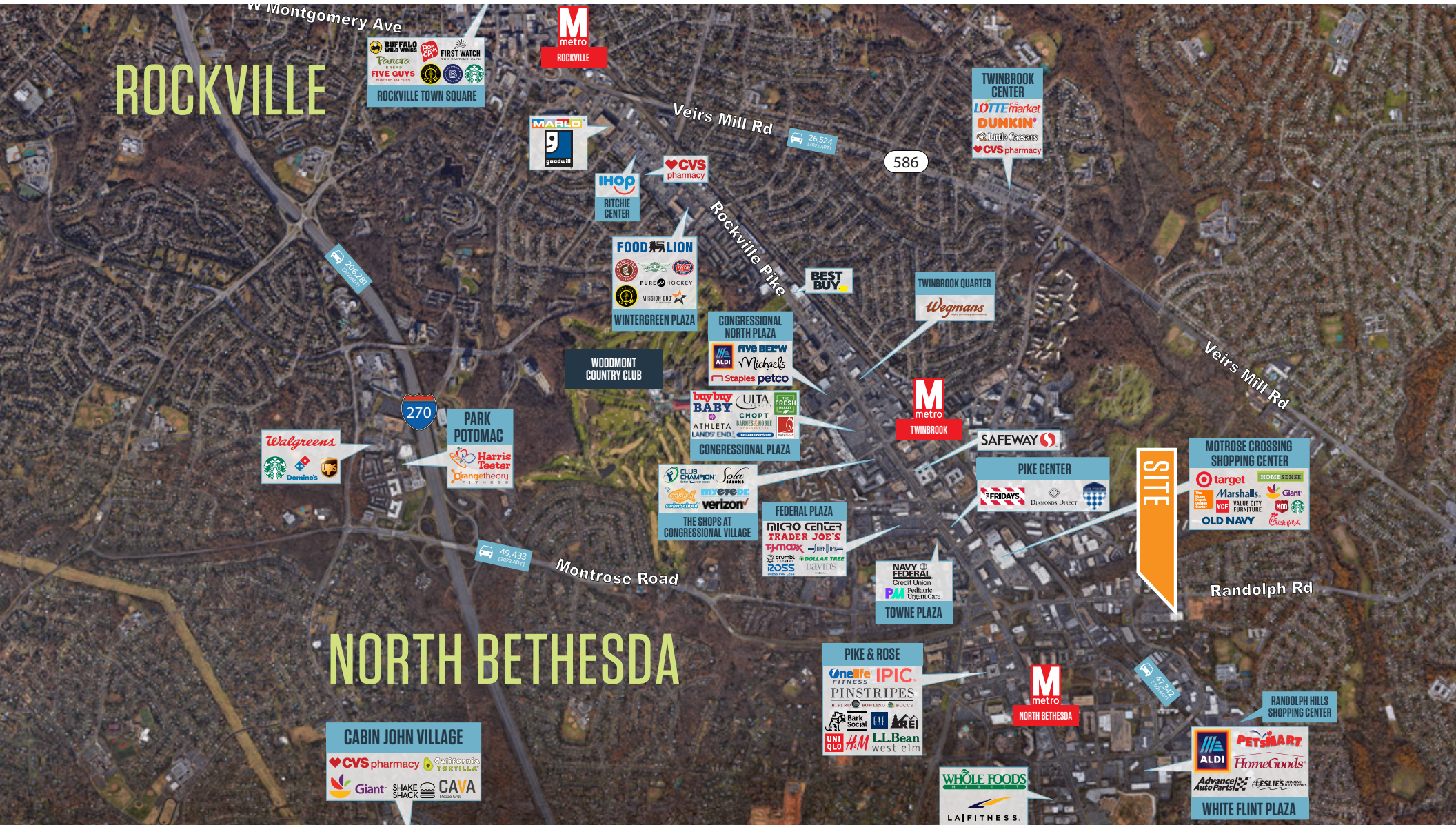
Keiry Martinez
703-334-5629
kmartinez@klnb.com

12435 Park Potomac Ave, Suite 250
Rockville, MD 20854
klnb.com

RANDOLPH SHOPPING CENTER

12255 Nebel Street, Rockville, MD 20852
Montgomery County

MARKET AERIAL



Kenneth Fellows
kfellows@klnb.com
301-222-0210

Robert Pugh
rpugh@klnb.com
301-222-0211

Keiry Martinez
kmartinez@klnb.com
703-334-5629

12435 Park Potomac Ave, Suite 250
Rockville MD, 20854
klnb.com



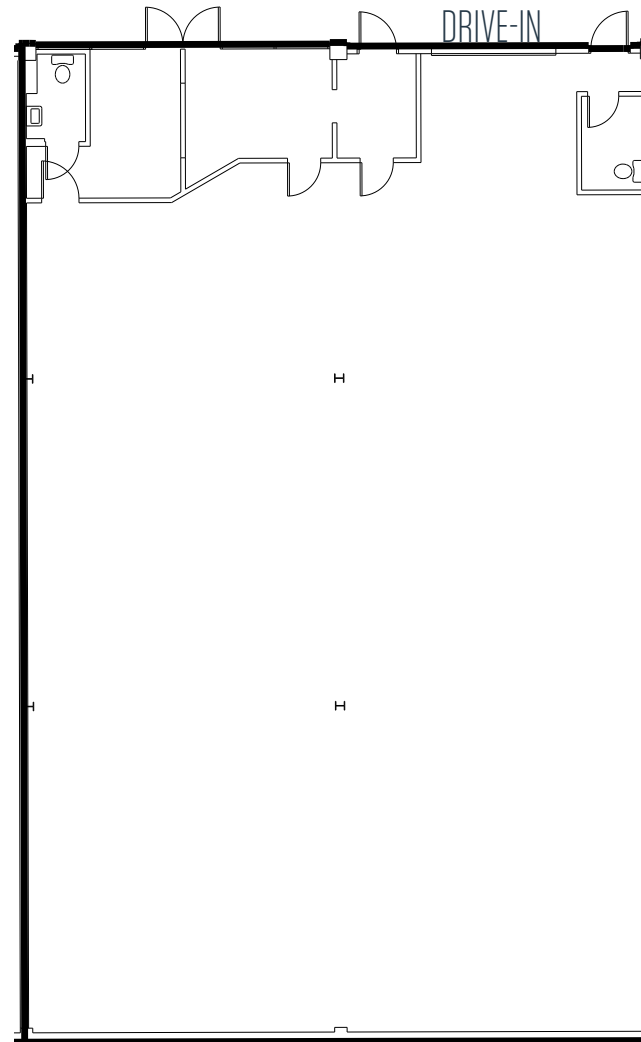
RANDOLPH SHOPPING CENTER

12255 Nebel Street, Rockville, MD 20852
Montgomery County

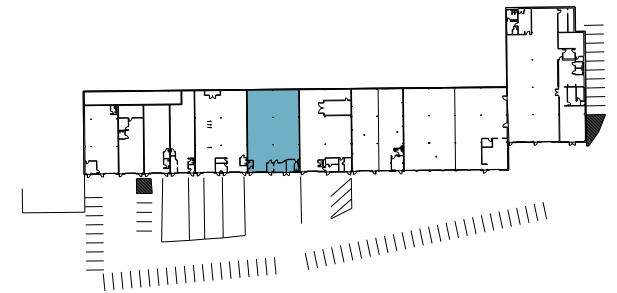
SUITE 12261

4,016 SF

AVAILABLE 02/01/2026



FLOOR PLAN



Kenneth Fellows
kfellows@klnb.com
301-222-0210

Robert Pugh
rpugh@klnb.com
301-222-0211

Keiry Martinez
kmartinez@klnb.com
703-334-5629

12435 Park Potomac Ave, Suite 250
Rockville MD, 20854
klnb.com



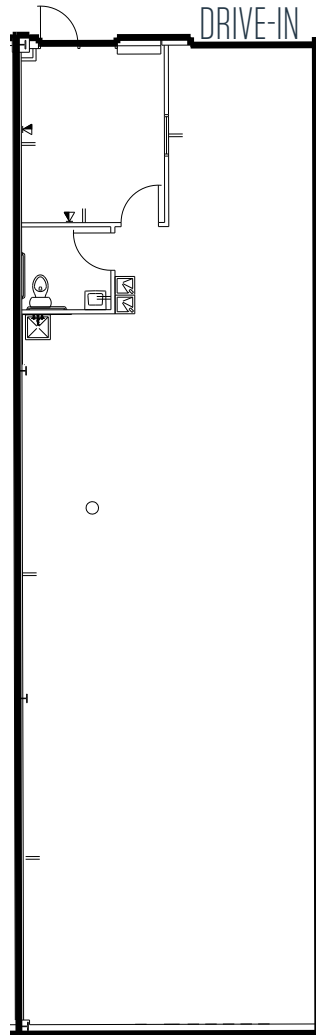
RANDOLPH SHOPPING CENTER

12255 Nebel Street, Rockville, MD 20852
Montgomery County

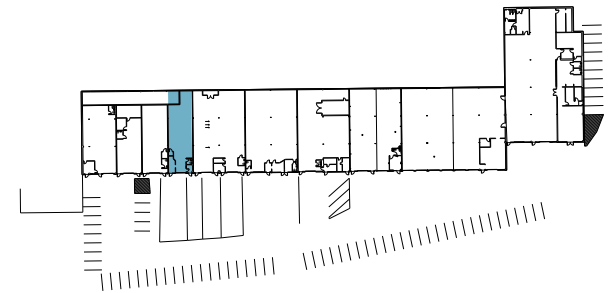
SUITE 12271

1,650 SF

AVAILABLE 04/01/2026



FLOOR PLAN



Kenneth Fellows
kfellows@klnb.com
301-222-0210

Robert Pugh
rpugh@klnb.com
301-222-0211

Keiry Martinez
kmartinez@klnb.com
703-334-5629

12435 Park Potomac Ave, Suite 250
Rockville MD, 20854
klnb.com



RANDOLPH SHOPPING CENTER

12255 Nebel Street, Rockville, MD 20852

Montgomery County

[CLICK TO VIEW PROPERTY WEBSITE](#)

For More Information, Please Contact:

Kenneth Fellows
kfellows@klnb.com
301-222-0210

Robert Pugh
rpugh@klnb.com
301-222-0211

Keiry Martinez
kmartinez@klnb.com
703-334-5629



While we have no reason to doubt the accuracy of any of the information supplied, we cannot, and do not, guarantee its accuracy. All information should be independently verified prior to a purchase or lease of the property. We are not responsible for errors, omissions, misuse, or misinterpretation of information contained herein and make no warranty of any kind, express or implied, with respect to the property or any other matters.

12435 Park Potomac Ave, Suite 250
Rockville MD, 20854
klnb.com

