

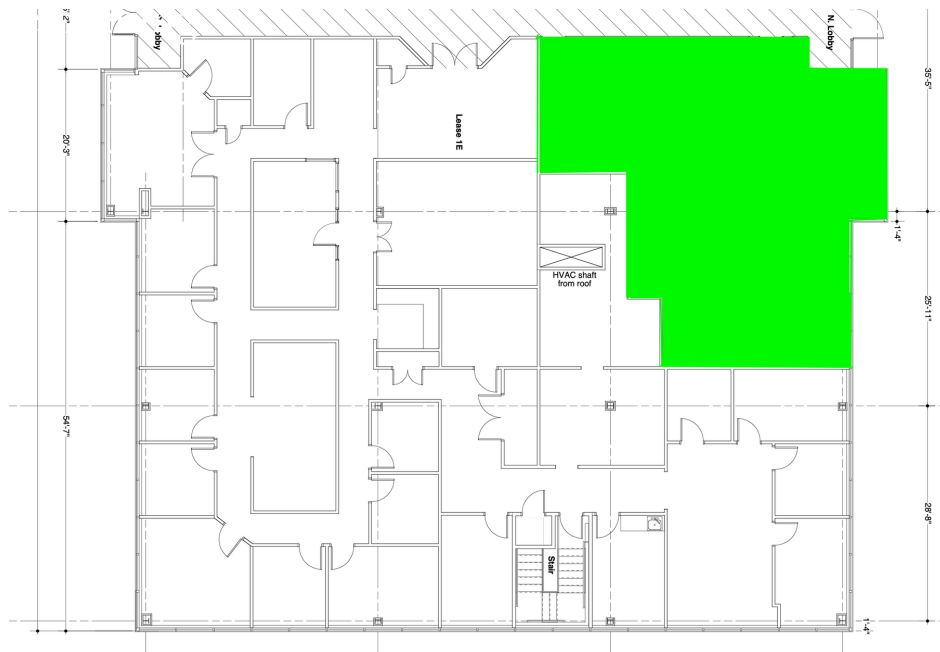
12 Terry Drive
Newtown, PA 18940

For Lease

greenstreetpa.com

The Details

- Well maintained multi-tenant office building
- Situated within the Newtown Business Commons
- All tenant amenities close by including hotels, restaurants, post office, day care, fitness center, and banks
- 6,500 SF of Office Space
- Divisible
- Medical use allowed



KYLIE BUFTY

215-383-0117 Office

215-906-0799 Mobile

kylie@greenstreetpa.com

GR[≡]NSTREET

COMMERCIAL REAL ESTATE