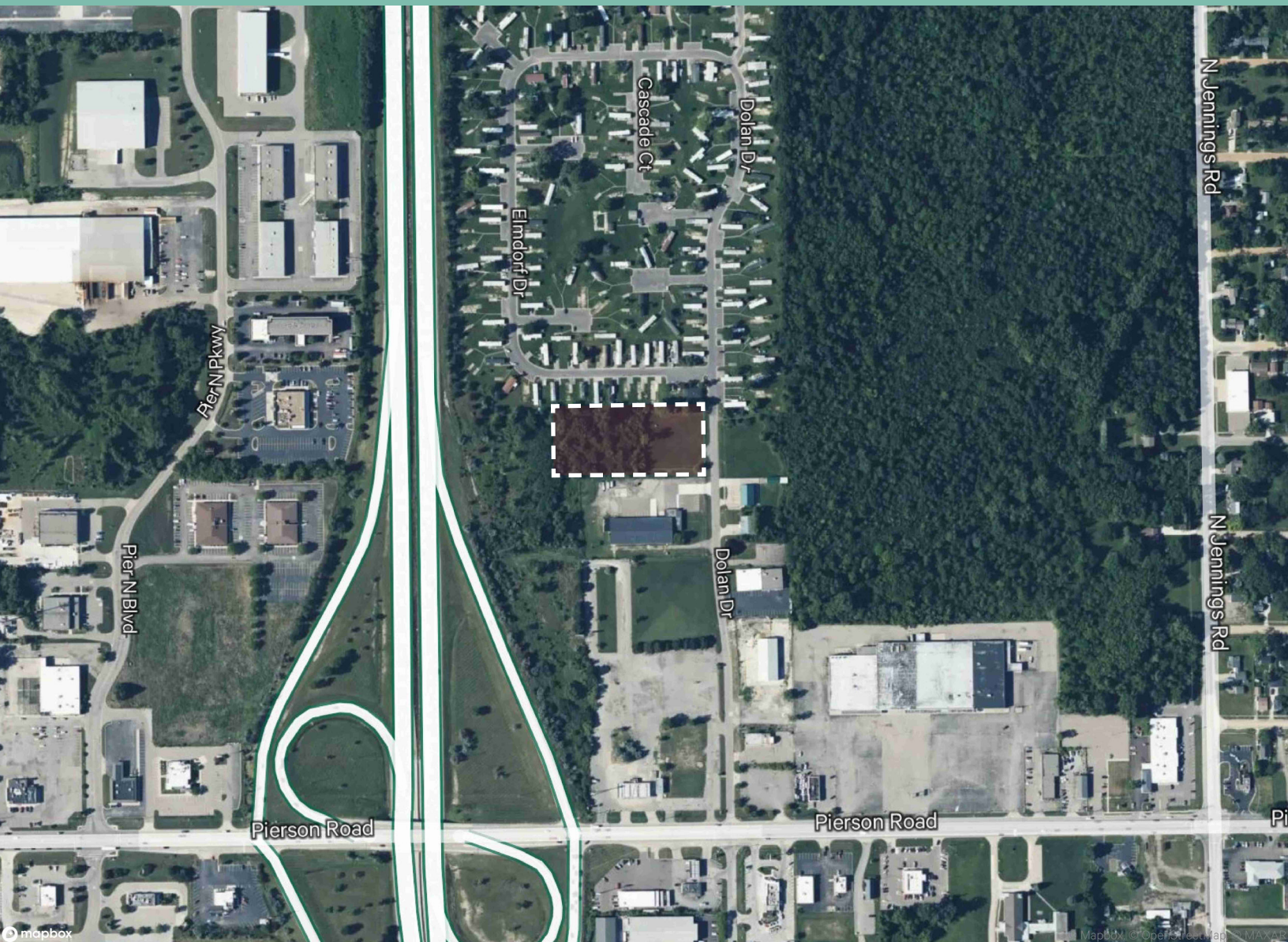


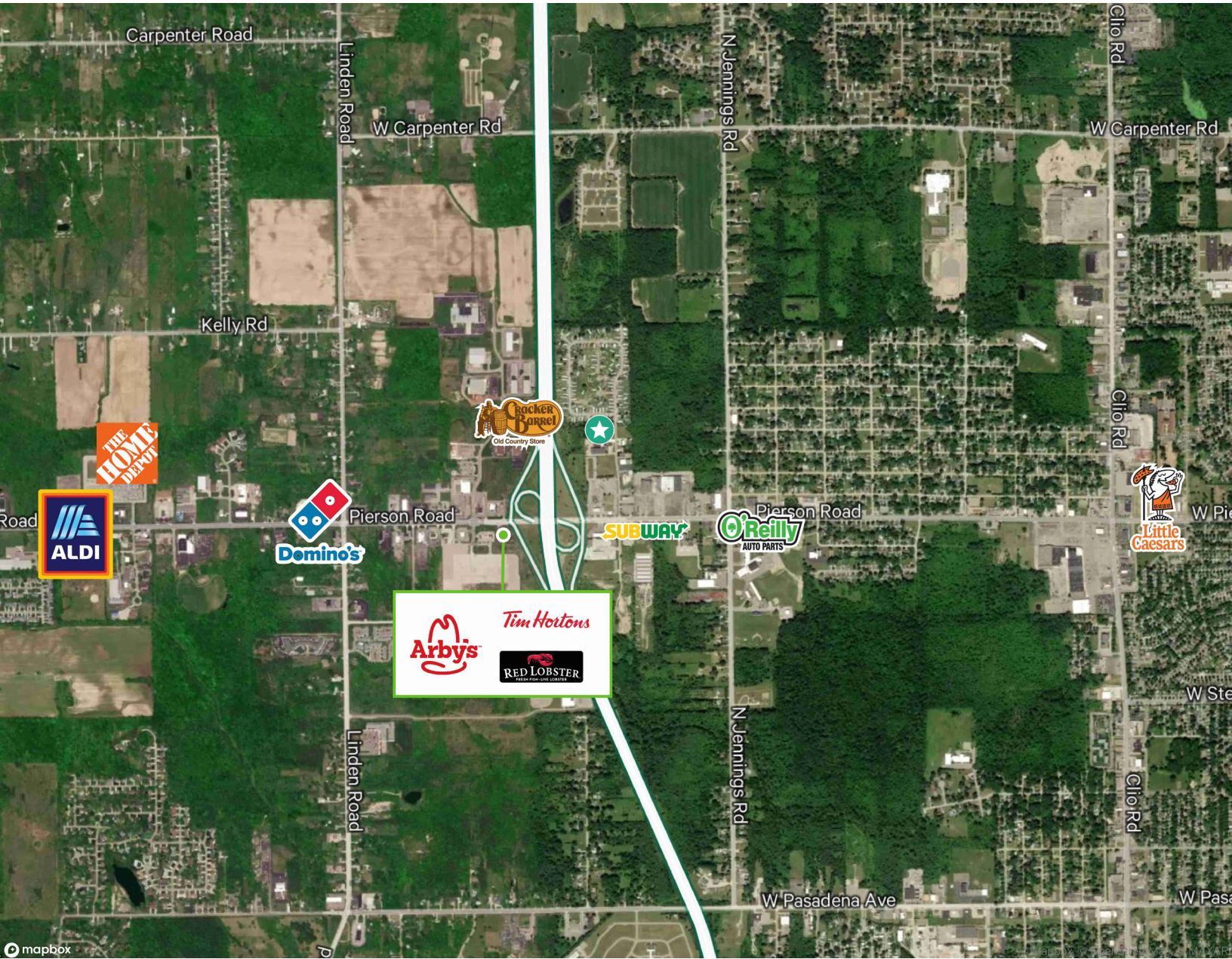
# 4119 Dolan Drive

Mount Morris Township, MI

2.38 ACRES FOR SALE



# Amenities Map



# Property Features

2.38

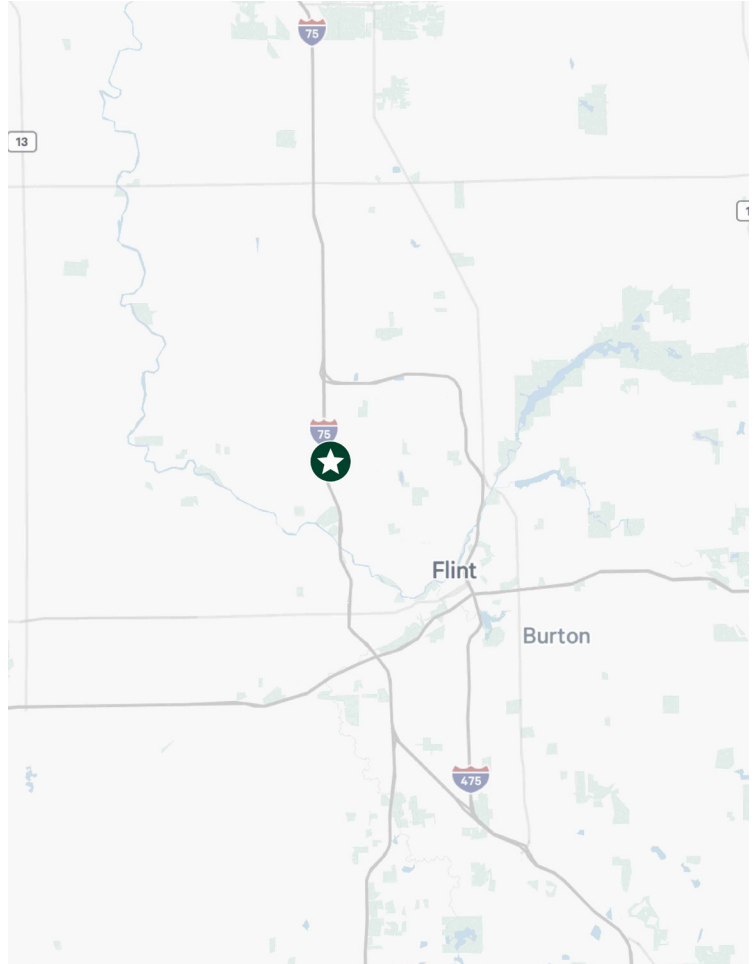
Acreage

\$238,000

Sales Price

Genesee

County



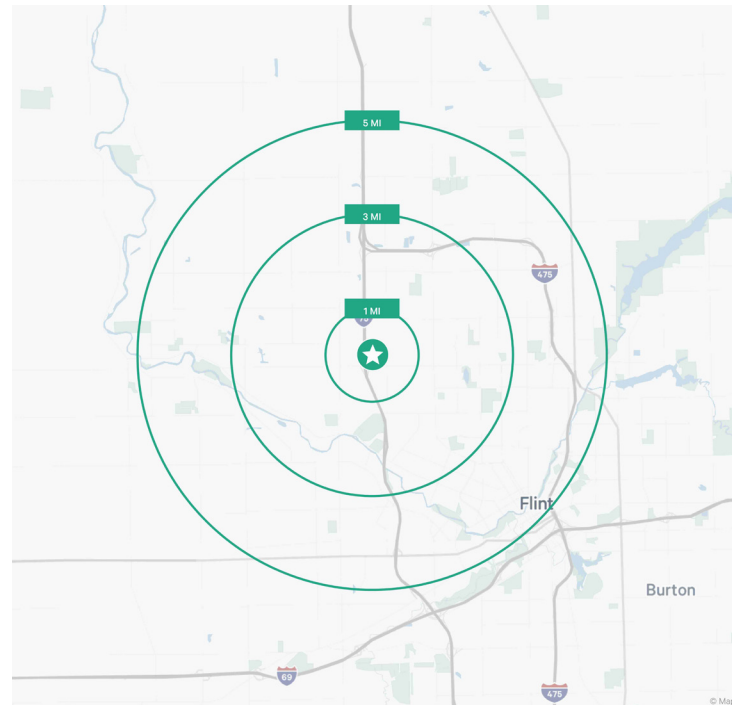
<b>Lot/Land Size:</b>	2.38 Acres	<b>Real Estate Taxes:</b>	\$3,859.77
<b>Min/Max Available:</b>	2.38 Acres	<b>Utilities:</b>	On Site
<b>Zoning:</b>	Heavy Service Commercial	<b>Topography:</b>	Level
<b>Parcel Number:</b>	14-28-576-004	<b>Frontage:</b>	170'

# Demographics and Traffic Counts

DEMOGRAPHICS	1 Mile	3 Miles	5 Miles
Population	1,875	35,769	98,954
Average Household Income	\$56,923	\$56,481	\$62,528
Households	788	15,097	41,341
Businesses	102	947	3,344
Employees	679	13,124	37,532

## TRAFFIC COUNTS

W Pierson Rd	24,627 ADT
Pierson Rd	13,270 ADT
N Linden Rd	12,013 ADT
Jennings Rd	4,807 ADT
Dolan Rd	1,200 ADT



## Contact Us

**Charles M. Ginster**  
Senior Vice President  
+1 248 351 2063  
chuck.ginster@cbre.com

**Jacob Ginster**  
Associate  
+1 248 351 2082  
jake.ginster@cbre.com

© 2024 CBRE, Inc. All rights reserved. This information has been obtained from sources believed reliable, but has not been verified for accuracy or completeness. You should conduct a careful, independent investigation of the property and verify all information. Any reliance on this information is solely at your own risk. CBRE and the CBRE logo are service marks of CBRE, Inc. All other marks displayed on this document are the property of their respective owners, and the use of such logos does not imply any affiliation with or endorsement of CBRE. Photos herein are the property of their respective owners. Use of these images without the express written consent of the owner is prohibited.