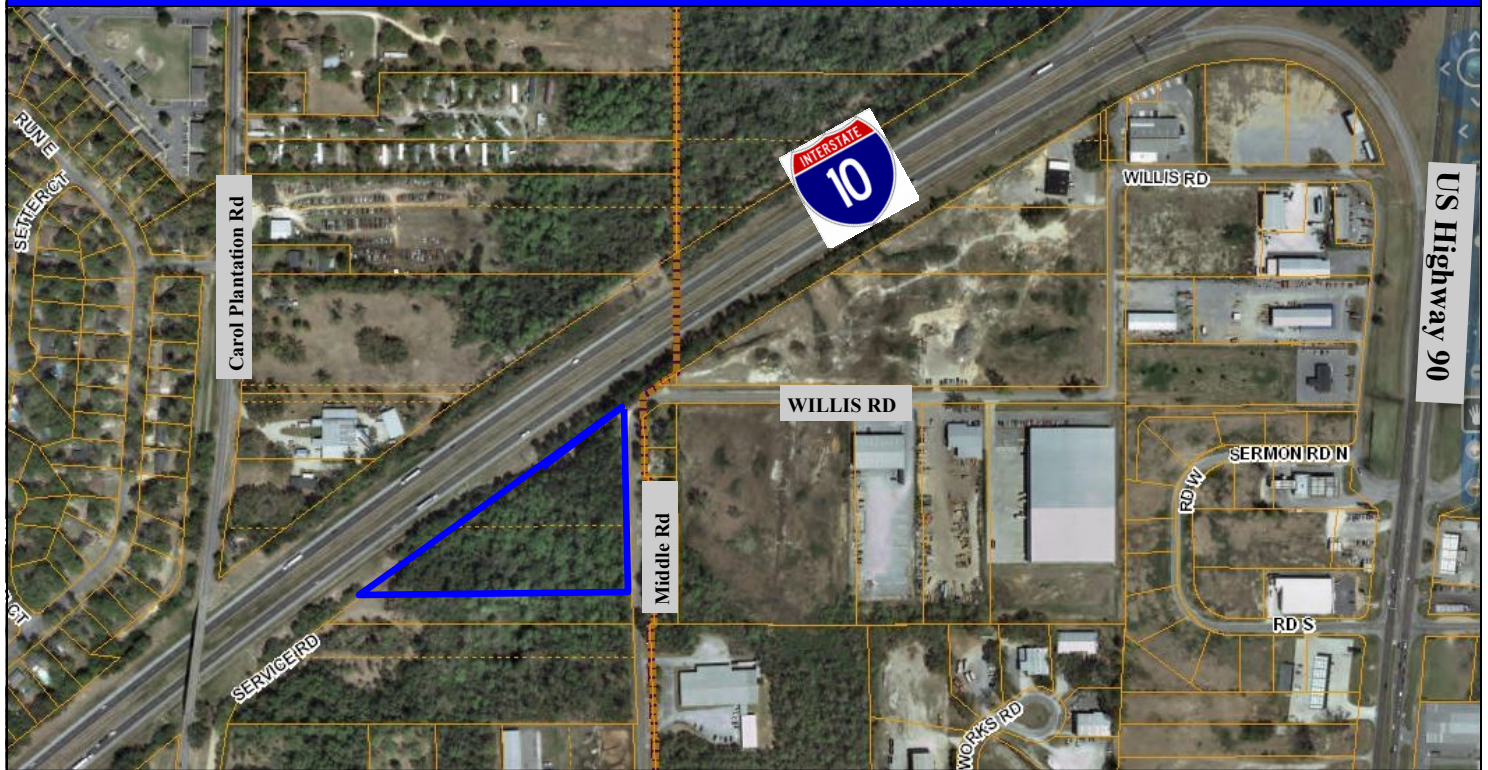


## 5.10 Acres Unrestricted Commercial Property

Middle Rd Theodore, Al. 36582



- **Total Price:** \$550,000
- **Total Acreage:** 5.10 +/- Acres
- **Price/Acre:** \$110,000
- **Income:** (2) double sided billboards on interstate
- **Frontage:** 965' frontage on I-10 and 552' Middle Rd
- **Suitable use:** Multifamily, Commercial or Industrial
- **Topography:** High, level and wooded
- **Zoned:** Outside City Zoning
- **Location:** Just west of Highway 90 at I-10 Exit 17



**Prudential**  
Cooper & Co. Inc.,  
REALTORS®

Commercial Division

900 Hillcrest Rd. A-5  
Mobile, AL 36695

For more info contact:

David Cooper  
251-583-1009

[www.davidcooperproperties.com](http://www.davidcooperproperties.com)