



TRACK SIX
 — SODO BUSINESS PARK —
 3847 1st Ave S | Seattle, WA

track6sodo.com



NEWMARK

EVAN LUGAR
 evan.lugar@nrmk.com
 425.362.1403

THAD MALLORY, SIOR
 thad.mallory@nrmk.com
 425.362.1410

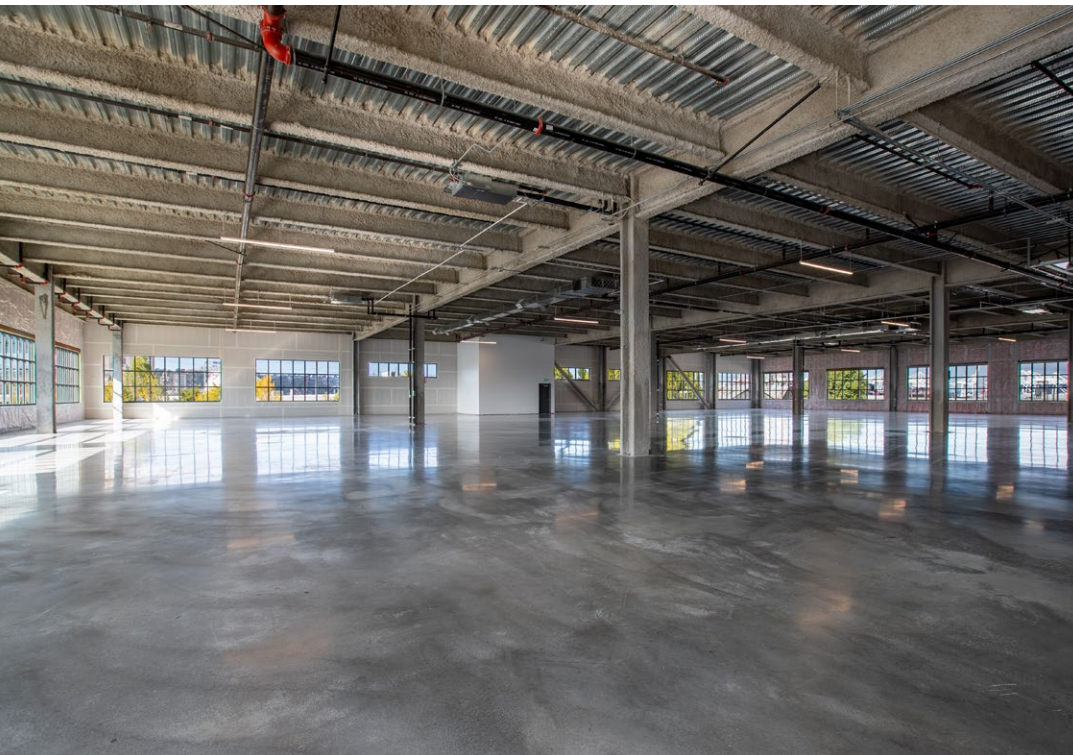
JESSE OTTELE
 jesse.ottele@nrmk.com
 206.452.4529

JOSH SATTERLEE
 josh.satterlee@nrmk.com
 425.362.1396



Introducing a new **four-story** **213,381 SF** building located at the footsteps of Downtown Seattle. **Currently under construction**, the building features **dock high and grade level loading** into **forklift rated freight elevators** serving floors 2-4. In a building **wrapped in natural light**, tenants will enjoy a creative environment ideal for **assembly, R&D, engineering, maker's space**, and light distribution in a one of its kind opportunity for a **Class A environment** of this scale and location. With **views of Downtown Seattle**, we are presenting a place for innovation and for users who seek to **BE A PART OF THE REVOLUTION OF SODO.**







PROPERTY HIGHLIGHTS



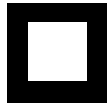
HEIGHT

85' Tall: 4-Story



CLEAR HEIGHTS

Floor 1: 24' clear
Floors 2/3: 16' clear
Floor 4: 14' clear



LAND AREA

104,401 SF



AVAILABLE BUILDING AREA

130,541 SF



FLOOR PLATE

±55,000 Gross SF



PARKING

92 Stalls



Four (4) Dock High
One (1) Grade Level
Loading



Freight & Passenger
Elevators Servicing
Upper Floors



50' x 45' Column
Spacing



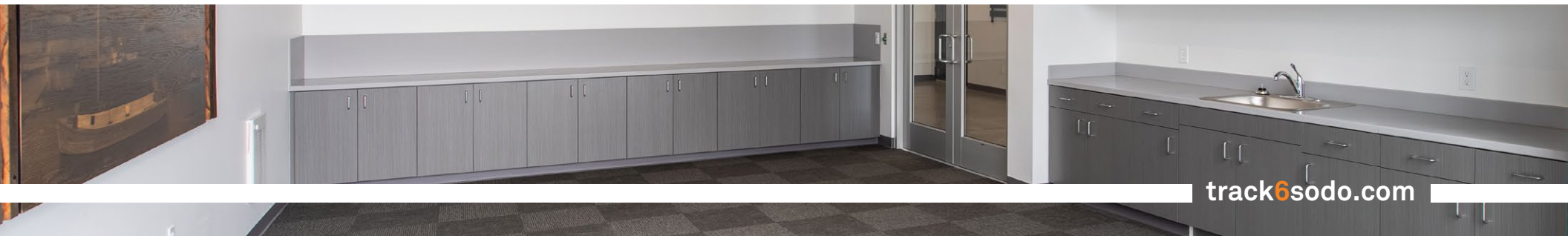
Divisible Down to
±5,000 SF



4th Floor
Conference Room
with South Facing
Views



Full Temperature
HVAC Capable



TENANT FINISH OPTIONS

STANDARD CONDITION

- Double storefront entry door to suite
- Polished concrete floor
- Open air exposed ceiling system
- White vinyl insulation barrier on inside of perimeter walls
- Rooftop Units installed for climate control expansion
- LED lighting to achieve 15 foot candle

- **PREMIUM CONDITION**

- All standard condition improvements
- Multiple climate zoned HVAC system
- Higher intensity LED lighting

ADDITIONAL IMPROVEMENTS

(Can be amortized into lease)

- Paint and finished drywall at inside of exterior walls
- Small kitchens
- Additional restrooms
- Conference rooms
- Private rooms
- Floor drains
- Preferred flooring system
- Locker rooms & showers



FLOOR SQUARE FOOTAGE OPTIONS

FOURTH FLOOR ± 5,000 SF - ± 41,961 SF

THIRD FLOOR ± 5,035 SF - ± 32,723 SF

SECOND FLOOR ± 13,492 SF - ± 55,857 SF

FIRST FLOOR **LEASED**



[CLICK HERE TO VIEW VIDEO](#)



TRACK SIX

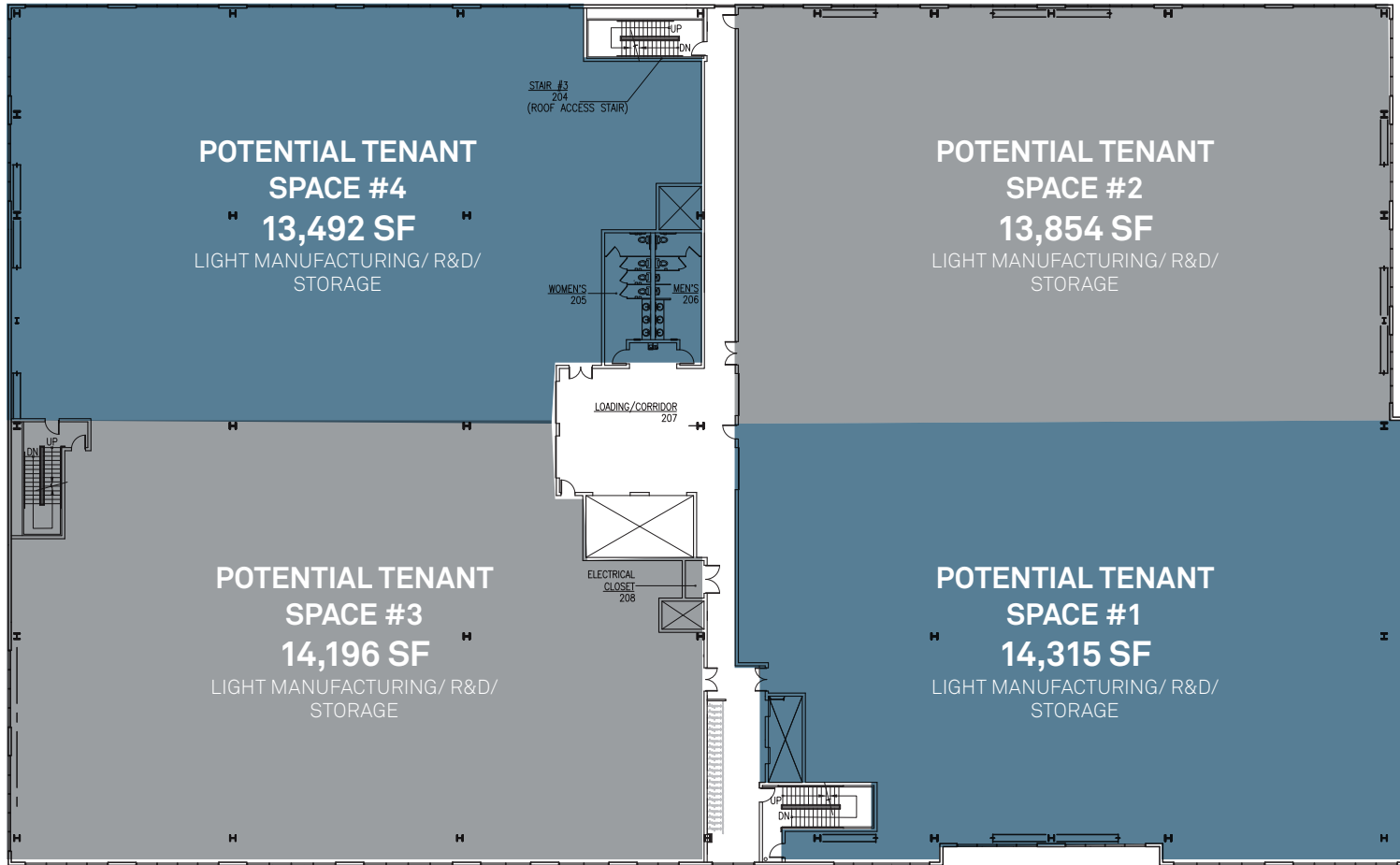
— SODO BUSINESS PARK —





24'
CLEAR HEIGHT

FIRST FLOOR - LEASED



16'
CLEAR HEIGHT

SECOND FLOOR - 55,857 RSF

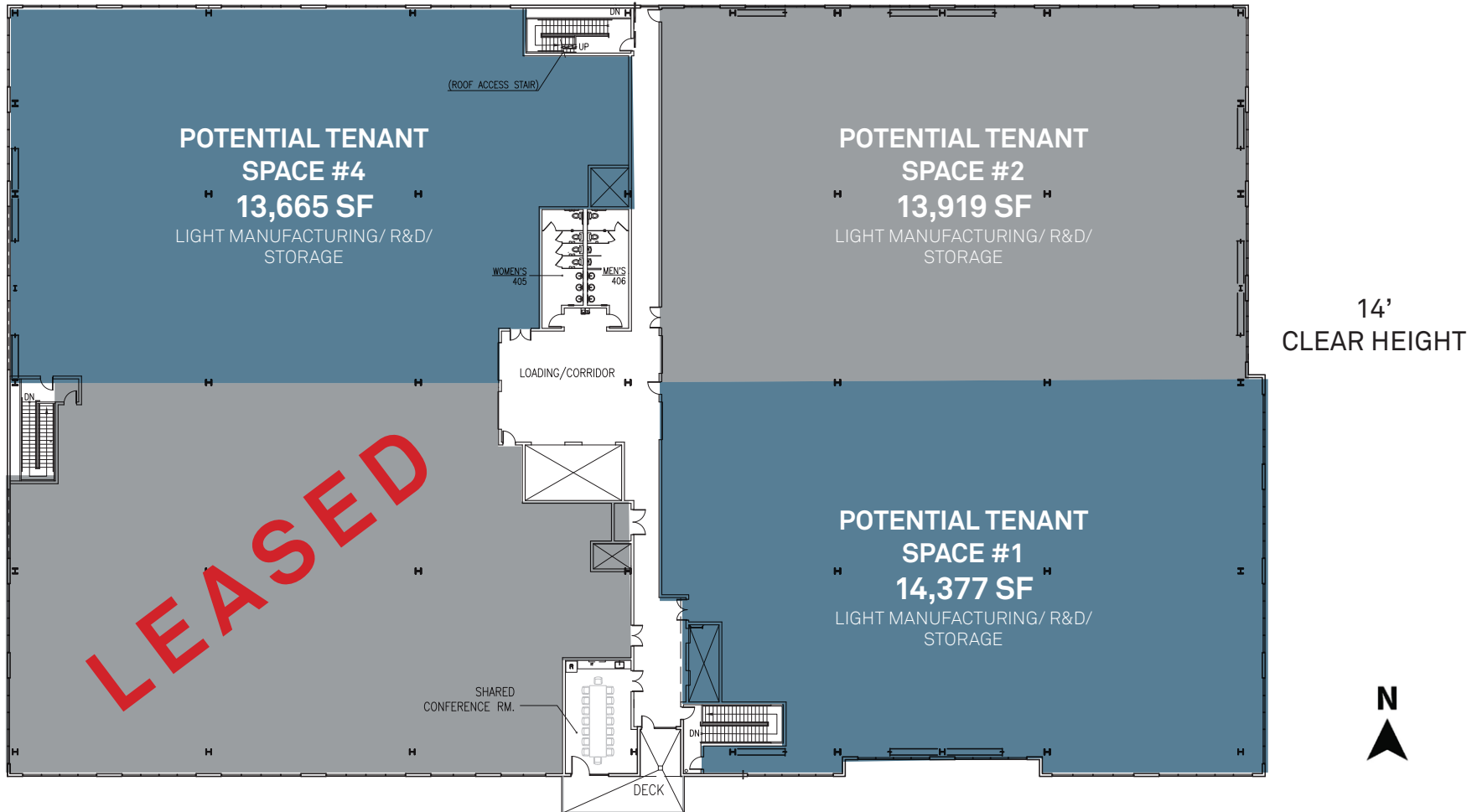
(DIVISIBLE TO ±13,492 SF)



16'
CLEAR HEIGHT

THIRD FLOOR - 32,723 RSF

(DIVISIBLE TO ±5,035 SF)



FOURTH FLOOR - 41,961 RSF

(DIVISIBLE TO ±5,000 SF)

TRACK SIX

— SODO BUSINESS PARK —



BUILDING PARKING

BUILDING PARKING

BUILDING PARKING



ADDITIONAL OFF-SITE PARKING





FOOD & DRINKS (WITHIN 1 MILE RADIUS)

- | | |
|----------------------------|-------------------------------|
| 1. Peco Pit BBQ | 23. Seapine Brewing Co. |
| 2. Taqueria Taco Gol | 24. Ghostfish Brewing Co. |
| 3. McDonald's | 25. Maison Tarven |
| 4. Pho Cyclo Cafe | 26. SODO Deli |
| 5. SODO Poke and More | 27. Burger King |
| 6. Starbucks Reserve | 28. Yak's Teriyaki |
| 7. Arby's | 29. Siren Tavern |
| 8. Dona Queen Donut & Deli | 30. Alaska Silk Pie Co. |
| 9. Korean Restaurant | 31. SODO Pizza |
| 10. Seattle' Best Teriyaki | 32. Waters Winery |
| 11. Pho City | 33. Rotie Cellars |
| 12. SODO Kitchen | 34. Nine Hats Wines |
| 13. Subway | 35. Schooner Brewing |
| 14. Denny's | 36. Kerloo Cellars |
| 15. By's | 37. Structure Cellars |
| 16. Cafe Con Leche | 38. Jack's BBQ |
| 17. Money Loft | 39. Raney's Bar & Grill |
| 18. 2bar Spirits | 40. Laurelhurst Cellars |
| 19. Fall Line Winery | 41. Teriyaki Plus |
| 20. Elsom Cellars | 42. Starbucks |
| 21. PICK-QUICK Drive In | 43. Schwartz Brother's Bakery |
| 22. Orient Express | |





FEATURED AMENITIES



Close proximity to hip restaurants, cafes, breweries, wine tasting rooms, and bars



Positioned at the epicenter of Seattle Growth



Only 1.5 miles to Lumen Field (Seahawks) and T-Mobile Park (Mariners)

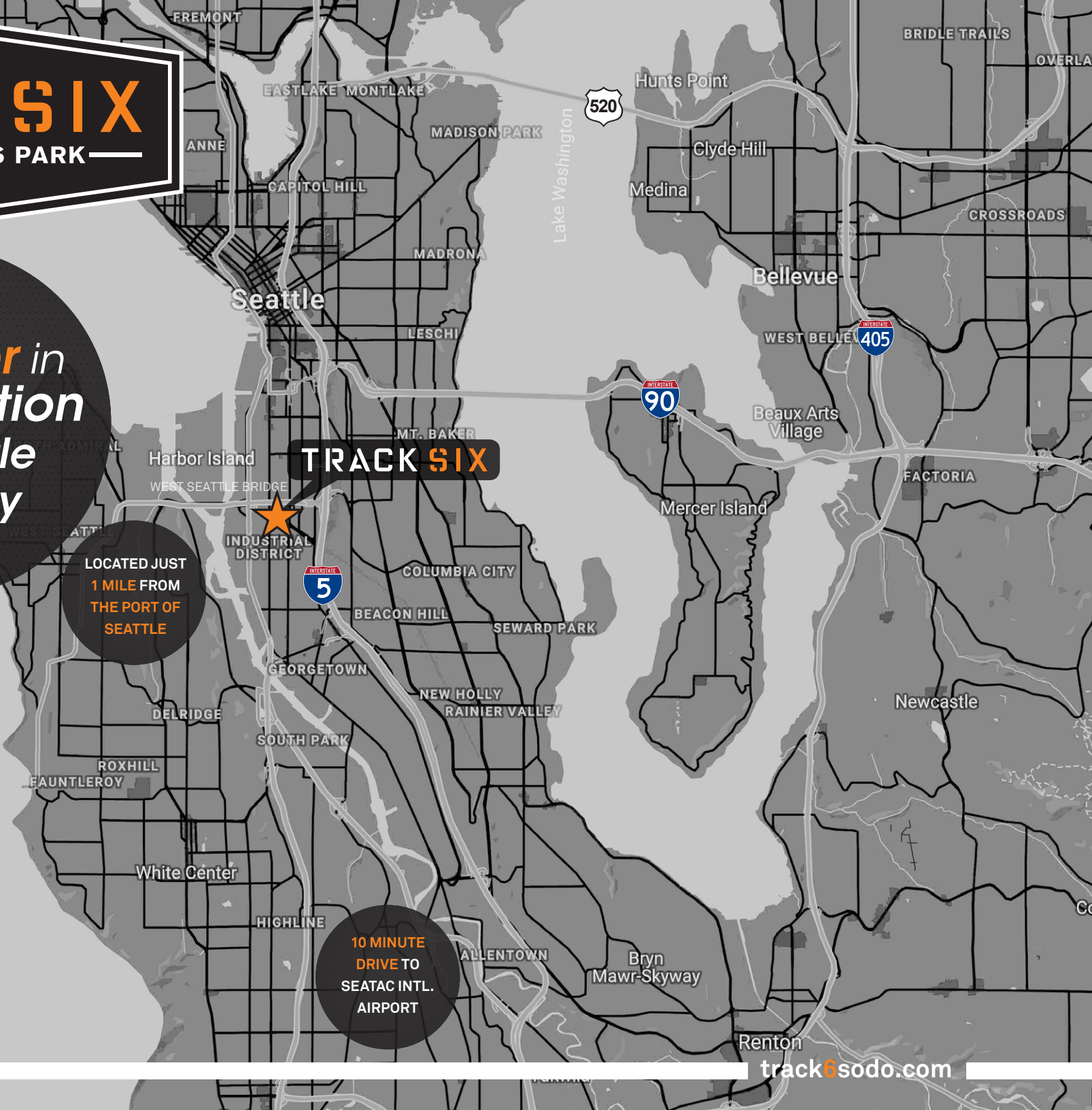
TRACK SIX

— SODO BUSINESS PARK —

A **Leader** in
the **Evolution**
of **Seattle**
Industry

LOCATED JUST
1 MILE FROM
THE PORT OF
SEATTLE

10 MINUTE
DRIVE TO
SEATAC INTL.
AIRPORT







NEWMARK

EVAN LUGAR
evan.lugar@nmrk.com
425.362.1403

JESSE OTTELE
jesse.ottele@nmrk.com
206.452.4529

THAD MALLORY, SIOR
thad.mallory@nmrk.com
425.362.1410

JOSH SATTERLEE
josh.satterlee@nmrk.com
425.362.1396

track6sodo.com

The distributor of this communication is performing acts for which a real estate license is required. The information contained herein has been obtained from sources deemed reliable but has not been verified and no guarantee, warranty or representation, either express or implied, is made with respect to such information. Terms of sale or lease and availability are subject to change or withdrawal without notice.