

FOR SUBLEASE

21,690 SF AVAILABLE

1251 FRONTENAC ROAD

SUITE 100

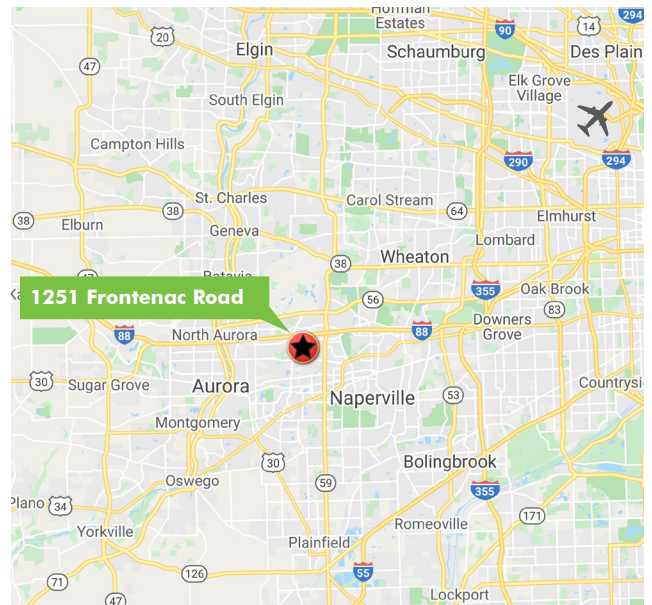
Naperville, IL 60563



FOR SUBLEASE

±1 AC OF OUTSIDE STORAGE

- + Close proximity to I-88.
- + Fenced/paved outside storage lot.
- + Current lease expires 10/31/2025.
- + Low DuPage County real estate taxes.
- + 20' clear height.
- + Warehouse restrooms and locker rooms including showers.
- + Conveniently located less than 2 miles to interchange I-88 and Rt. 59.



CONTACT US

JOHN HAMILTON

First Vice President

+1 847 706 4909

john.hamilton@cbre.com

<http://www.cbre.us/real-estate-services/teams/corporate-teams/advisory-and-transaction/at-shb>

CBRE

FOR SUBLEASE
21,690 SF

1251 FRONTENAC ROAD
SUITE 100
Naperville, IL 60563

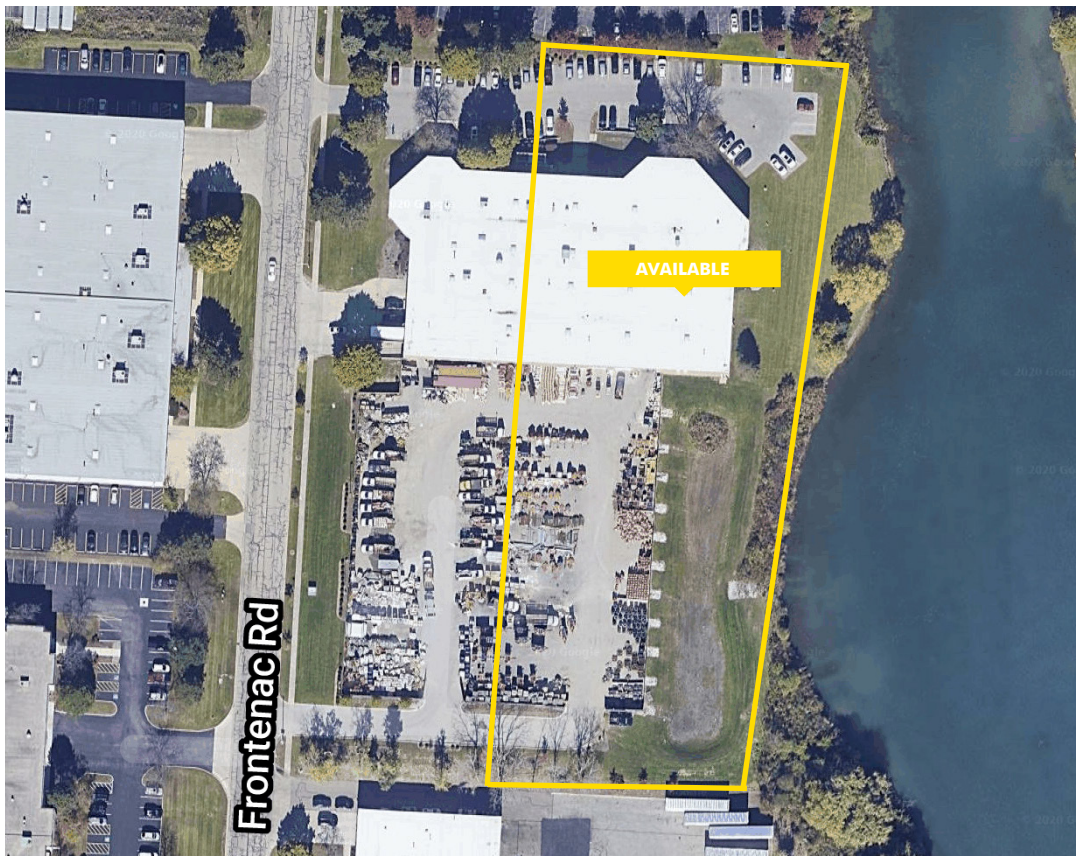


PROPERTY SPECIFICATIONS

1147 N. MAIN STREET, LOMBARD, IL 60148	
Building Size	44,026 SF
Available	21,690 SF
Outside Storage	±1 AC
Clearance	20'
Drive Ins	3 (12'w x 16'h)
Year Built	1988
Parking	±32 Spots
Lease Rate	STO



21,690 SF AVAILABLE



<http://www.cbre.us/real-estate-services/teams/corporate-teams/advisory-and-transaction/at-shb>

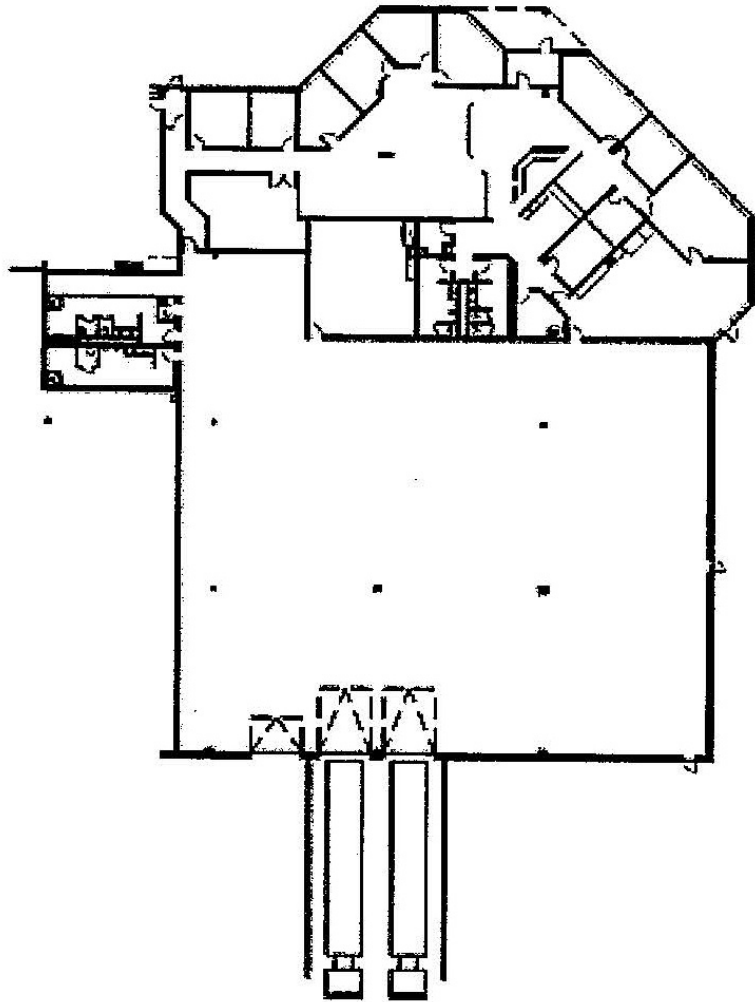
CBRE

FOR SUBLEASE
21,690 SF

1251 FRONTENAC ROAD
SUITE 100
Naperville, IL 60563



AVAILABLE SPACE



CONTACT US

JOHN HAMILTON

First Vice President
+1 847 706 4909
john.hamilton@cbre.com

<http://www.cbre.us/real-estate-services/teams/corporate-teams/advisory-and-transaction/at-shb>

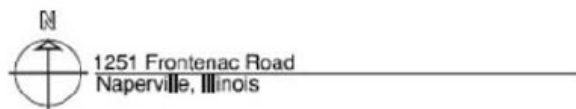
CBRE

FOR SUBLEASE
21,690 SF

1251 FRONTENAC ROAD
SUITE 100
Naperville, IL 60563



FLOOR PLAN



© 2020 CBRE, Inc. All rights reserved. This information has been obtained from sources believed reliable, but has not been verified for accuracy or completeness. You should conduct a careful, independent investigation of the property and verify all information. Any reliance on this information is solely at your own risk. CBRE and the CBRE logo are service marks of CBRE, Inc. All other marks displayed on this document are the property of their respective owners. Photos herein are the property of their respective owners. Use of these images without the express written consent of the owner is prohibited.

<http://www.cbre.us/real-estate-services/teams/corporate-teams/advisory-and-transaction/at-shb>

CBRE