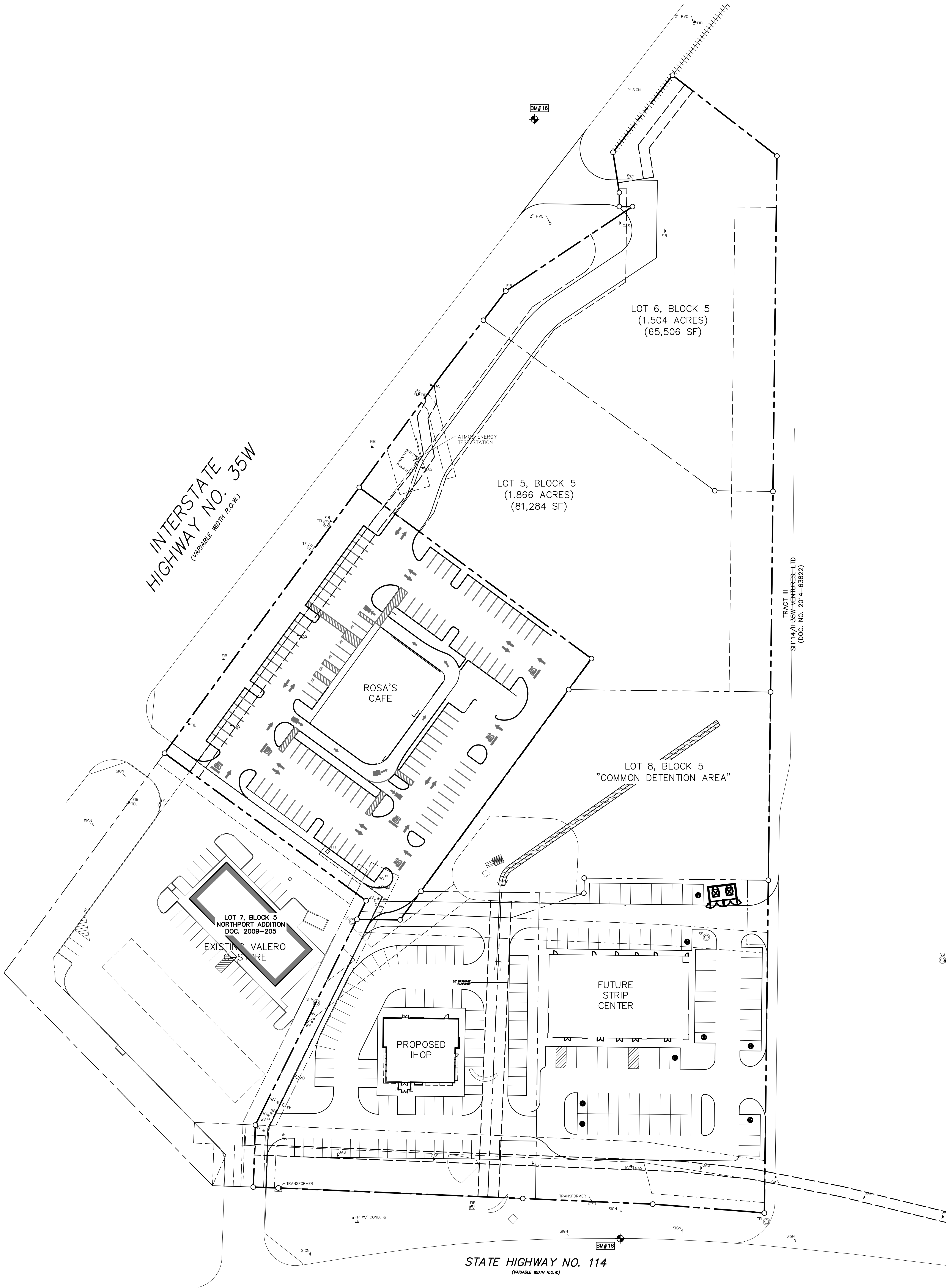


0 20 40 80 120
GRAPHIC SCALE IN FEET



INTERSTATE
HIGHWAY NO. 35W
(VARIABLE WIDTH R.O.W.)

LOT 5, BLOCK 5
(1.866 ACRES)
(81,284 SF)

LOT 6, BLOCK 5
(1.504 ACRES)
(65,506 SF)

LOT 7, BLOCK 5
NORTHPORT ADDITION
DOC. 2009-205
EXISTING VALERO
GAS STORE

ROSA'S
CAFE

PROPOSED
IHOP

LOT 8, BLOCK 5
"COMMON DETENTION AREA"

FUTURE
STRIP
CENTER

STATE HIGHWAY NO. 114
(VARIABLE WIDTH R.O.W.)

TRACT III
SMT14/AN/INDUSTRIAL
(DOC. NO. 2014-63822)

6:10 PM
 M:\DWG-01 INDUSTRIAL MARKETING PROJECTS\VAUGHAN\TEXAS ROADHOUSE\2334-15.289CV.DWG

NO.	DATE	REVISION				
SITE PLAN NORTHPORT RETAIL DEVELOPMENT						
TOWN OF NORTHLAKE, DENTON COUNTY, TEXAS						
DESIGN	DRAWN	DATE	SCALE	NOTES	FILE	NO.
CJS	ECS	MAY 2017	1"=40'			EX

NORTHPORT RETAIL