

FOR LEASE 1,310 SQ.FT. FORMER COFFEE SHOP

PUTMAN PROPERTIES

Integrity and Trust Since 1985

Located within 3 Story Medical Office Building



340 Oxford St, Dover, OH, 44622

Built out coffee shop with full kitchen. Ideal for catering. Available for lease.

Covered portico for drop off and pick up.

	Restaurant	Restaurant
Lease Rate:	\$14.50	
Sq.Ft:	1,310	
\$/Mo:	\$1,582.92	
	Tenant	Owner
Gas/Electric:	<input checked="" type="checkbox"/>	<input type="checkbox"/>
Water/Sewer:	<input checked="" type="checkbox"/>	<input type="checkbox"/>
Taxes/Insur:	<input checked="" type="checkbox"/>	<input type="checkbox"/>
Maint/Repairs:	<input checked="" type="checkbox"/>	<input type="checkbox"/>



Tim Putman

Cell: (330) 495-0600

tputman@putmanproperties.com

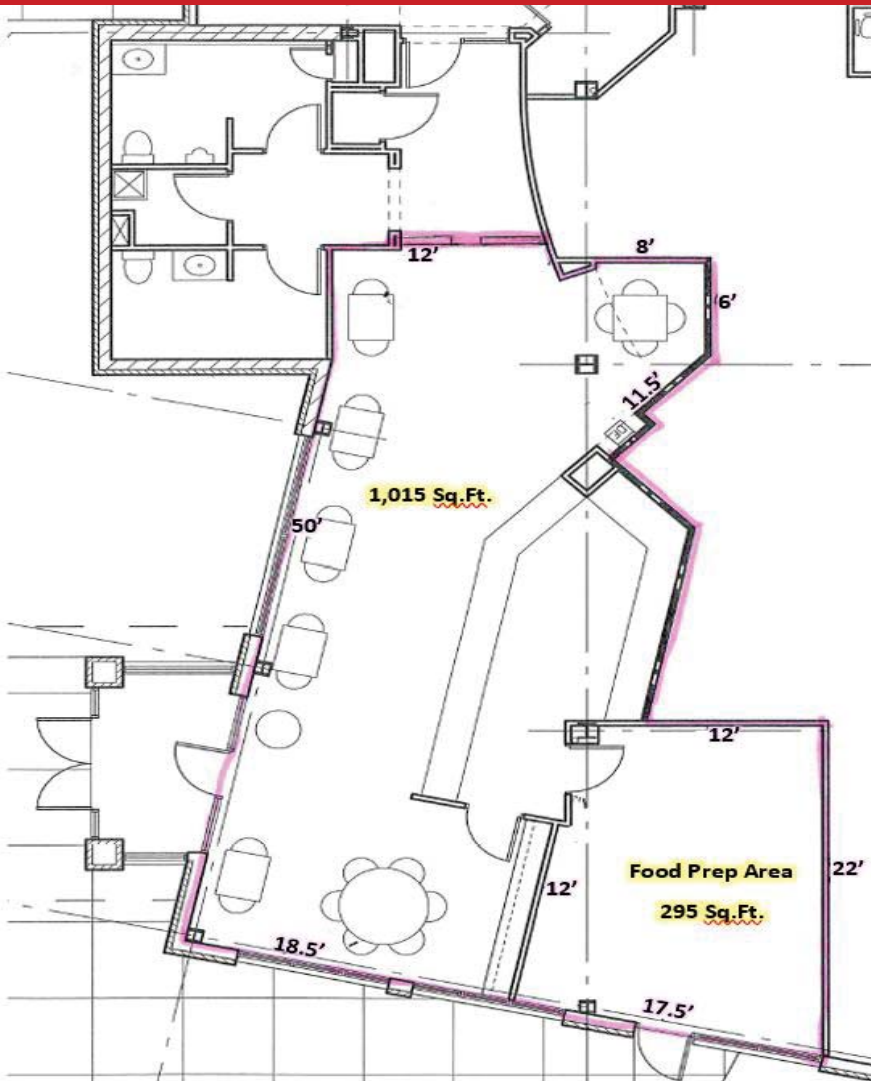
Cell:

www.putmanproperties.com

4065 Fulton Dr. NW
Canton, OH 44718

FOR LEASE 1,310 SQ.FT. FORMER COFFEE SHOP AVAILABLE

340 Oxford St, Dover, OH, 44622



BUILDING INFO

Previous: MT Cup
Total Sq Ft: 44350
Restaurant: 1310
Restaurant:
Units: 12
Floor(s): 3
Year Built: 2001
Roof: Rubber
Ceiling Height: 9'
Sprinklers: Fully sprinklered
Elevator: 2
Heat: Gas
Air: Central
Construction: Brick Masonry

UTILITIES

Gas: Dominion East Ohio Gas
Electric: AEP
Water: New Philadelphia
Sewer: New Philadelphia
Internet: Spectrum

ADDITIONAL INFO

- FIRST LEVEL AVAILABILITY: 1,310 Sq.ft. (former coffee shop)
- Located off Wooster Ave, Dover, Ohio
- Located just 23 miles south of Canton, OH
- After hours key fob system in place
- Ample parking onsite.



Tim Putman

Cell: (330) 495-0600

tputman@putmanproperties.com

Cell:



FOR LEASE 1,310 SQ.FT. FORMER COFFEE SHOP AVAILABLE
340 Oxford St, Dover, OH, 44622



Tim Putman

Cell: (330) 495-0600

tputman@putmanproperties.com

Cell:



FOR LEASE 1,310 SQ.FT. FORMER COFFEE SHOP AVAILABLE

340 Oxford St, Dover, OH, 44622



Directions: I-77 to exit 83, take ramp right for OH-211/OH-39 toward Dover/Sugarcreek, left onto OH-39/OH-211/N Tuscarawas Ave, straight onto W Slingluff Ave, right onto N Wooster Ave, left onto Oxford St



Tim Putman

Cell: (330) 495-0600

tputman@putmanproperties.com

Cell:



FOR LEASE 1,310 SQ.FT. FORMER COFFEE SHOP AVAILABLE

340 Oxford St, Dover, OH, 44622

SITE INFO

Acre(s): 5.12
Frontage: 623.18'
County: Tuscarawas
Zoning: B-2
Topo: Level
Parking: 173 Asphalt parking spaces



4065 Fulton Dr. NW, Canton, OH 44718

www.putmanproperties.com

330-498-4400 | Fax 330-498-3800



Tim Putman

Cell: (330) 495-0600

tputman@putmanproperties.com

Cell:

