



# Morrison Place

**FOR LEASE:** Premium retail space in urban SE Portland  
SE 14<sup>th</sup> and Morrison, Portland, Oregon

- 1401 SE Morrison Street
- 1,150 sq. ft. (currently occupied by Porteco Lighting - please do not disturb)
- 46 parking stalls are provided on-site with generous on-street parking also available
- Co-tenants include Nostrana, Delores Restaurant, Stereotypes and Mint Dental
- Architecture features high ceilings with beautiful exposed wood bow trusses and clerestory dormer windows
- Extensive landscaping and an unusually deep promenade covered by steel canopies protect store entrances and enhance outdoor seating
- A freestanding pylon sign is available
- Availability - Contact Broker



**Mert Meeker**  
811 NW 19<sup>th</sup> Ave., Ste. 102  
Portland, OR 97209  
**503.227.7271**  
mert@mbmproperties.com



STEREOTYPES



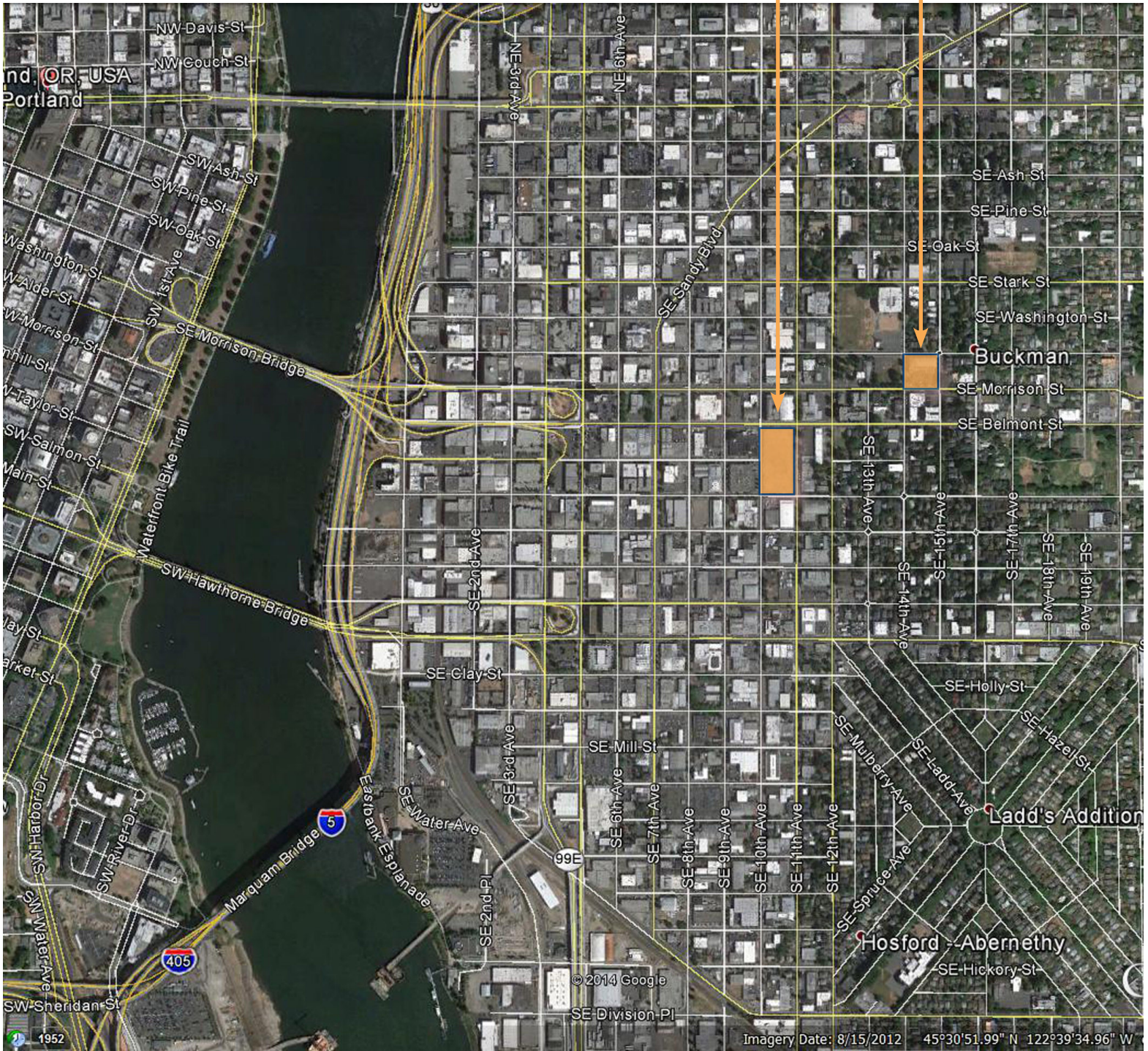


# Morrison Place - SE 14<sup>th</sup> and Morrison, Portland

## SE Portland Aerial

Goat  
Blocks

SITE

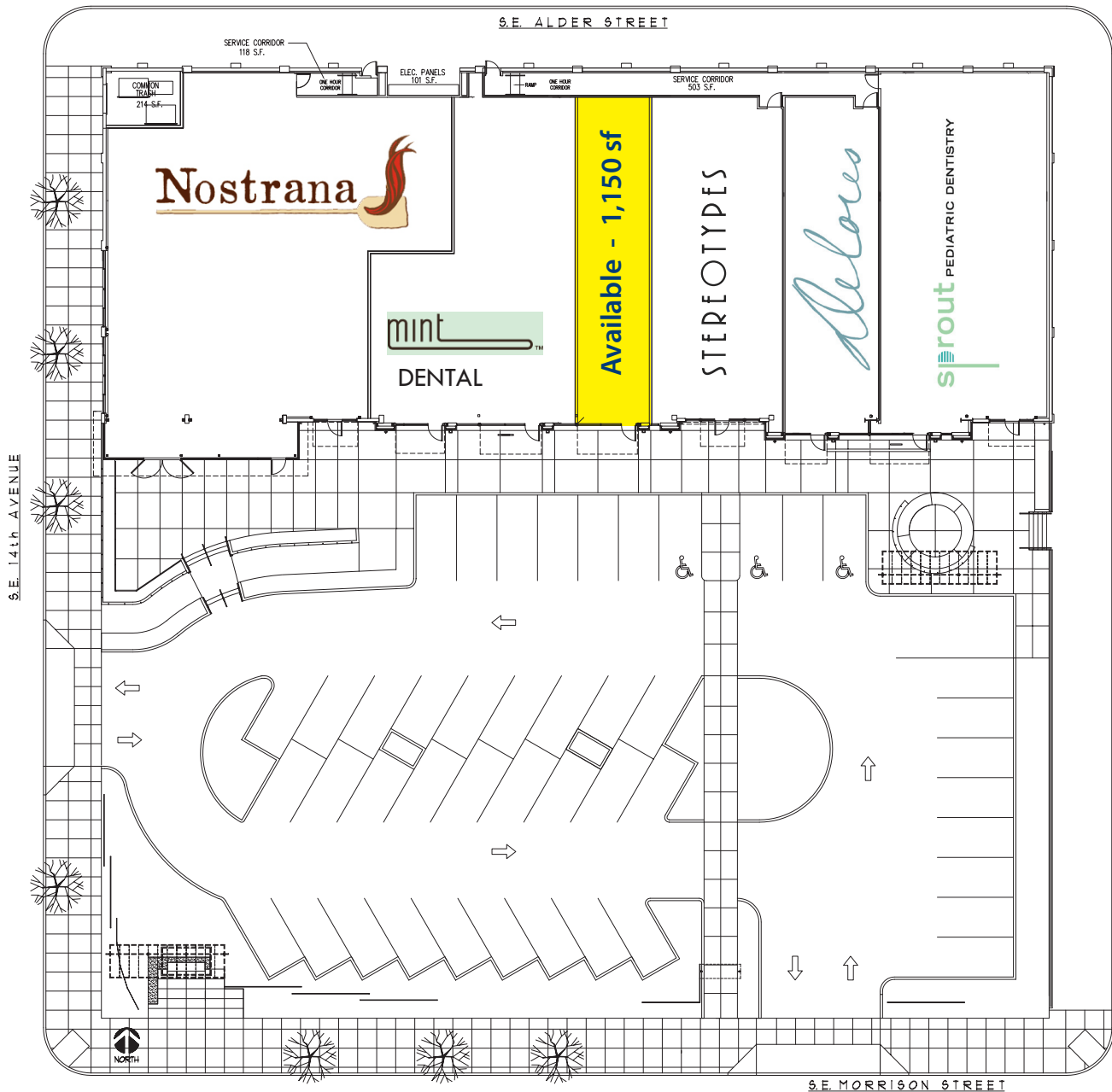
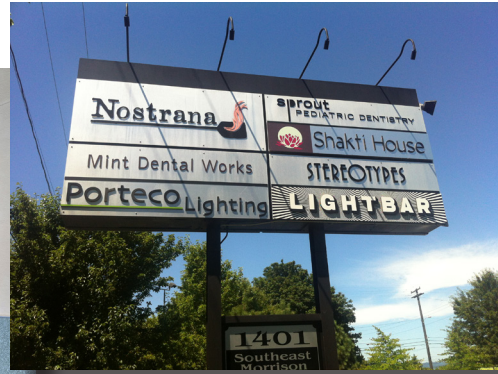


**AVAILABLE**  
**1,150 sq. ft.**



# Morrison Place - SE 14<sup>th</sup> and Morrison, Portland

## Tenants and Pylon Signage





C Gibbs - FC Services



C Gibbs - FC Services

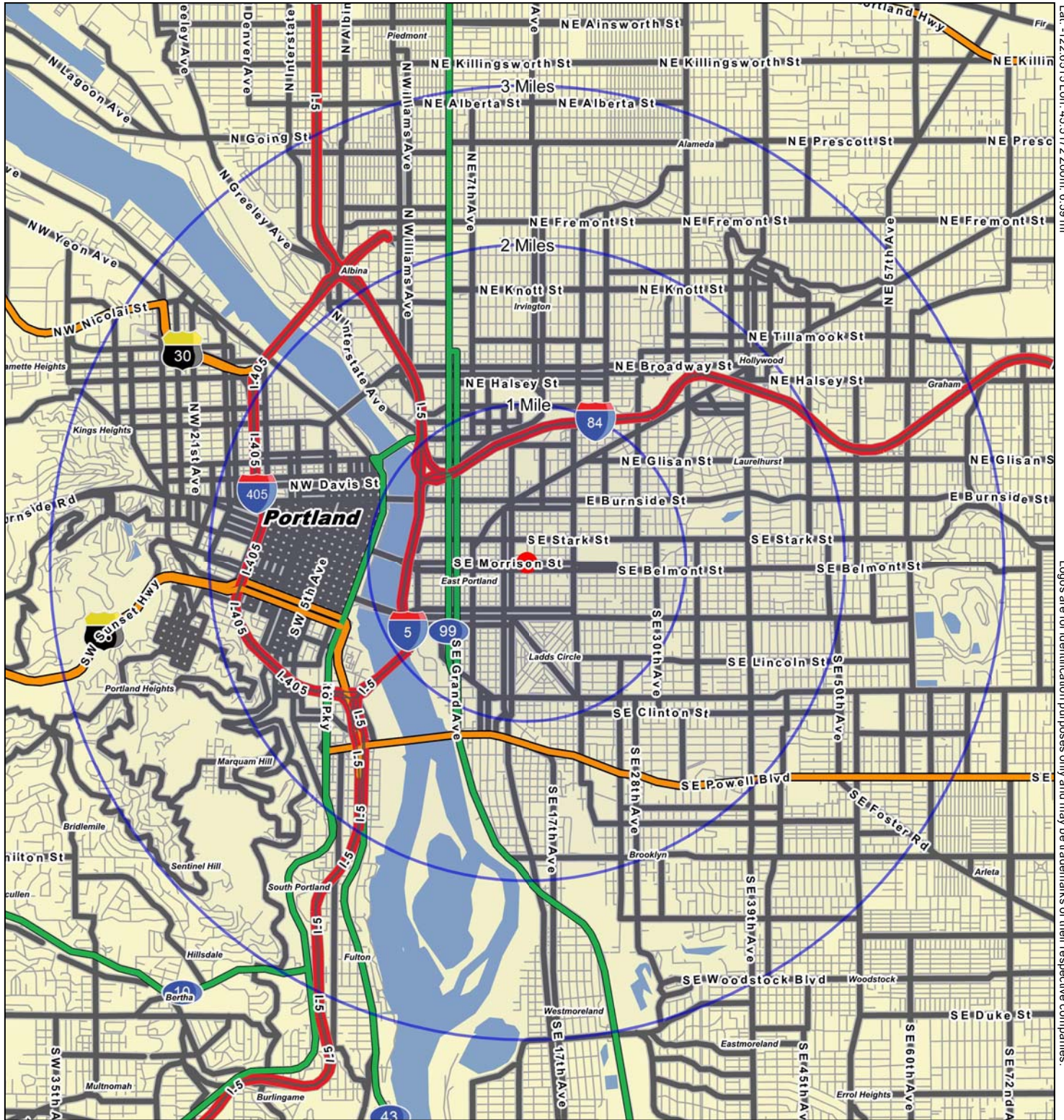
## Welcome to SE Portland

A strong blend of personal income levels and distinctive Portland residential neighborhoods such as Ladd's Addition, Laurelhurst, and Mt. Tabor can be found within the Morrison Place trade area. These neighborhoods contain beautiful Victorian homes, Portland bungalows and townhomes, as well as apartments and new condominiums.

A thriving mix of national, regional and one of a kind shops, restaurants, and professional offices make up the existing retail landscape.



**Mert Meeker**  
 811 NW 19<sup>th</sup> Ave., Ste. 102  
 Portland, OR 97209  
**503.227.7271**  
 mert@mbmproperties.com



Lat: -122.6515 Lon: 45.5172 Zoom: 6.59 mi

Logos are for identification purposes only and may be trademarks of their respective companies.

©2014, Sites USA Inc., Chandler, AZ (480) 491-1112. All Rights Reserved.

**Morrison Place  
SE 14th & Morrison  
Portland, OR**

This map was produced using data from private and government sources deemed to be reliable. The information herein is provided without representation or warranty.

# FULL PROFILE

2000-2010 Census, 2019 Estimates with 2024 Projections

Calculated using Weighted Block Centroid from Block Groups



Lat/Lon: 45.5177/-122.6512

RF1

**1401 SE Morrison Street**

**Portland, OR 97214**

**1 mi radius    2 mi radius    3 mi radius**

		1 mi radius	2 mi radius	3 mi radius
<b>POPULATION</b>	2019 Estimated Population	26,048	121,939	233,868
	2024 Projected Population	27,056	125,921	241,864
	2010 Census Population	20,353	99,636	196,614
	2000 Census Population	19,287	86,192	179,004
	Projected Annual Growth 2019 to 2024	0.8%	0.7%	0.7%
	Historical Annual Growth 2000 to 2019	1.8%	2.2%	1.6%
<b>HOUSEHOLDS</b>	2019 Estimated Households	14,314	65,304	119,350
	2024 Projected Households	15,084	68,912	126,126
	2010 Census Households	10,864	51,563	97,617
	2000 Census Households	10,262	44,256	87,498
	Projected Annual Growth 2019 to 2024	1.1%	1.1%	1.1%
	Historical Annual Growth 2000 to 2019	2.1%	2.5%	1.9%
<b>AGE</b>	2019 Est. Population Under 10 Years	9.9%	8.3%	8.9%
	2019 Est. Population 10 to 19 Years	7.5%	7.2%	7.4%
	2019 Est. Population 20 to 29 Years	22.0%	19.7%	17.9%
	2019 Est. Population 30 to 44 Years	32.1%	30.0%	29.8%
	2019 Est. Population 45 to 59 Years	15.7%	17.7%	17.8%
	2019 Est. Population 60 to 74 Years	9.9%	13.2%	13.7%
	2019 Est. Population 75 Years or Over	2.9%	4.0%	4.4%
	2019 Est. Median Age	33.1	36.2	36.7
<b>MARITAL STATUS &amp; GENDER</b>	2019 Est. Male Population	50.4%	51.2%	50.3%
	2019 Est. Female Population	49.6%	48.8%	49.7%
	2019 Est. Never Married	56.1%	48.8%	45.8%
	2019 Est. Now Married	27.0%	31.7%	35.5%
	2019 Est. Separated or Divorced	14.4%	16.6%	15.7%
	2019 Est. Widowed	2.5%	2.9%	3.0%
<b>INCOME</b>	2019 Est. HH Income \$200,000 or More	6.6%	9.3%	10.6%
	2019 Est. HH Income \$150,000 to \$199,999	5.7%	8.0%	8.7%
	2019 Est. HH Income \$100,000 to \$149,999	12.0%	14.5%	15.6%
	2019 Est. HH Income \$75,000 to \$99,999	14.7%	12.8%	13.0%
	2019 Est. HH Income \$50,000 to \$74,999	19.0%	16.1%	16.2%
	2019 Est. HH Income \$35,000 to \$49,999	13.3%	10.1%	10.1%
	2019 Est. HH Income \$25,000 to \$34,999	7.7%	7.1%	6.5%
	2019 Est. HH Income \$15,000 to \$24,999	9.4%	7.8%	7.0%
	2019 Est. HH Income Under \$15,000	11.8%	14.3%	12.3%
	2019 Est. Average Household Income	\$75,406	\$89,681	\$99,306
	2019 Est. Median Household Income	\$63,105	\$69,575	\$76,613
	2019 Est. Per Capita Income	\$41,858	\$48,666	\$51,096
	2019 Est. Total Businesses	4,270	17,343	24,999
	2019 Est. Total Employees	38,599	189,849	288,702

This report was produced using data from private and government sources deemed to be reliable. The information herein is provided without representation or warranty.

# FULL PROFILE

2000-2010 Census, 2019 Estimates with 2024 Projections

Calculated using Weighted Block Centroid from Block Groups



Lat/Lon: 45.5177/-122.6512

RF1

## 1401 SE Morrison Street

## Portland, OR 97214

1 mi radius 2 mi radius 3 mi radius

	1 mi radius	2 mi radius	3 mi radius	
<b>RACE</b>	2019 Est. White	81.9%	80.5%	80.4%
	2019 Est. Black	3.6%	5.3%	5.5%
	2019 Est. Asian or Pacific Islander	4.2%	5.9%	5.9%
	2019 Est. American Indian or Alaska Native	1.4%	0.9%	0.8%
	2019 Est. Other Races	9.0%	7.4%	7.3%
<b>HISPANIC</b>	2019 Est. Hispanic Population	3,601	10,979	19,236
	2019 Est. Hispanic Population	13.8%	9.0%	8.2%
	2024 Proj. Hispanic Population	14.4%	9.4%	8.6%
	2010 Hispanic Population	5.4%	5.3%	5.3%
<b>EDUCATION (Adults 25 or Older)</b>	2019 Est. Adult Population (25 Years or Over)	19,603	93,987	180,098
	2019 Est. Elementary (Grade Level 0 to 8)	1.0%	1.4%	1.4%
	2019 Est. Some High School (Grade Level 9 to 11)	1.5%	2.1%	2.0%
	2019 Est. High School Graduate	10.0%	9.1%	9.4%
	2019 Est. Some College	18.9%	18.0%	17.6%
	2019 Est. Associate Degree Only	7.1%	6.6%	6.1%
	2019 Est. Bachelor Degree Only	40.9%	36.7%	36.7%
	2019 Est. Graduate Degree	20.6%	26.1%	26.9%
<b>HOUSING</b>	2019 Est. Total Housing Units	14,618	67,514	122,951
	2019 Est. Owner-Occupied	21.9%	29.4%	36.9%
	2019 Est. Renter-Occupied	76.0%	67.3%	60.2%
	2019 Est. Vacant Housing	2.1%	3.3%	2.9%
<b>HOMES BUILT BY YEAR</b>	2019 Homes Built 2010 or later	10.1%	9.4%	8.4%
	2019 Homes Built 2000 to 2009	5.7%	11.5%	9.4%
	2019 Homes Built 1990 to 1999	7.5%	8.7%	7.5%
	2019 Homes Built 1980 to 1989	5.9%	6.4%	6.2%
	2019 Homes Built 1970 to 1979	10.7%	9.6%	9.5%
	2019 Homes Built 1960 to 1969	6.0%	5.5%	5.8%
	2019 Homes Built 1950 to 1959	6.6%	5.6%	7.1%
	2019 Homes Built Before 1949	45.4%	40.1%	43.2%
<b>HOME VALUES</b>	2019 Home Value \$1,000,000 or More	2.4%	3.3%	4.0%
	2019 Home Value \$500,000 to \$999,999	55.5%	51.8%	49.2%
	2019 Home Value \$400,000 to \$499,999	21.3%	20.2%	20.9%
	2019 Home Value \$300,000 to \$399,999	20.6%	22.3%	22.3%
	2019 Home Value \$200,000 to \$299,999	7.2%	8.4%	8.9%
	2019 Home Value \$150,000 to \$199,999	1.1%	0.9%	0.9%
	2019 Home Value \$100,000 to \$149,999	0.6%	0.4%	0.3%
	2019 Home Value \$50,000 to \$99,999	0.6%	0.3%	0.3%
	2019 Home Value \$25,000 to \$49,999	0.3%	0.3%	0.3%
	2019 Home Value Under \$25,000	0.6%	0.5%	0.5%
	2019 Median Home Value	\$519,372	\$517,802	\$524,021
	2019 Median Rent	\$1,100	\$1,144	\$1,138

This report was produced using data from private and government sources deemed to be reliable. The information herein is provided without representation or warranty.

# FULL PROFILE

2000-2010 Census, 2019 Estimates with 2024 Projections

Calculated using Weighted Block Centroid from Block Groups



Lat/Lon: 45.5177/-122.6512

RF1

## 1401 SE Morrison Street

### Portland, OR 97214

1 mi radius    2 mi radius    3 mi radius

	1 mi radius	2 mi radius	3 mi radius	
<b>POPULATION</b>	2019 Estimated Population	26,048	121,939	233,868
	2024 Projected Population	27,056	125,921	241,864
	2010 Census Population	20,353	99,636	196,614
	2000 Census Population	19,287	86,192	179,004
	Projected Annual Growth 2019 to 2024	0.8%	0.7%	0.7%
	Historical Annual Growth 2000 to 2019	1.8%	2.2%	1.6%
<b>HOUSEHOLDS</b>	2019 Estimated Households	14,314	65,304	119,350
	2024 Projected Households	15,084	68,912	126,126
	2010 Census Households	10,864	51,563	97,617
	2000 Census Households	10,262	44,256	87,498
	Projected Annual Growth 2019 to 2024	1.1%	1.1%	1.1%
	Historical Annual Growth 2000 to 2019	2.1%	2.5%	1.9%
<b>AGE</b>	2019 Est. Population Under 10 Years	9.9%	8.3%	8.9%
	2019 Est. Population 10 to 19 Years	7.5%	7.2%	7.4%
	2019 Est. Population 20 to 29 Years	22.0%	19.7%	17.9%
	2019 Est. Population 30 to 44 Years	32.1%	30.0%	29.8%
	2019 Est. Population 45 to 59 Years	15.7%	17.7%	17.8%
	2019 Est. Population 60 to 74 Years	9.9%	13.2%	13.7%
	2019 Est. Population 75 Years or Over	2.9%	4.0%	4.4%
	2019 Est. Median Age	33.1	36.2	36.7
<b>MARITAL STATUS &amp; GENDER</b>	2019 Est. Male Population	50.4%	51.2%	50.3%
	2019 Est. Female Population	49.6%	48.8%	49.7%
	2019 Est. Never Married	56.1%	48.8%	45.8%
	2019 Est. Now Married	27.0%	31.7%	35.5%
	2019 Est. Separated or Divorced	14.4%	16.6%	15.7%
	2019 Est. Widowed	2.5%	2.9%	3.0%
<b>INCOME</b>	2019 Est. HH Income \$200,000 or More	6.6%	9.3%	10.6%
	2019 Est. HH Income \$150,000 to \$199,999	5.7%	8.0%	8.7%
	2019 Est. HH Income \$100,000 to \$149,999	12.0%	14.5%	15.6%
	2019 Est. HH Income \$75,000 to \$99,999	14.7%	12.8%	13.0%
	2019 Est. HH Income \$50,000 to \$74,999	19.0%	16.1%	16.2%
	2019 Est. HH Income \$35,000 to \$49,999	13.3%	10.1%	10.1%
	2019 Est. HH Income \$25,000 to \$34,999	7.7%	7.1%	6.5%
	2019 Est. HH Income \$15,000 to \$24,999	9.4%	7.8%	7.0%
	2019 Est. HH Income Under \$15,000	11.8%	14.3%	12.3%
	2019 Est. Average Household Income	\$75,406	\$89,681	\$99,306
	2019 Est. Median Household Income	\$63,105	\$69,575	\$76,613
	2019 Est. Per Capita Income	\$41,858	\$48,666	\$51,096
	2019 Est. Total Businesses	4,270	17,343	24,999
2019 Est. Total Employees	38,599	189,849	288,702	

This report was produced using data from private and government sources deemed to be reliable. The information herein is provided without representation or warranty.