

# FOR LEASE



FOR MORE INFORMATION, CALL JEREMY JUFFE AT (609) 364-2094  
CYZNER PROPERTIES.COM ▪ JEREMY@CYZNERPROPERTIES.COM

SPACE AVAILABLE - NEW CONSTRUCTION

First Hill Apartments

1320 University Street



## DETAILS

New prime retail space available in the First Hill Neighborhood of Seattle. Brand new construction, 36 luxury apartments over approx. 5,000 SF of retail. Just blocks from the major area hospitals and downtown. Located at the intersection of University St. & E Union St. Currently under construction, anticipated opening Fall '18.

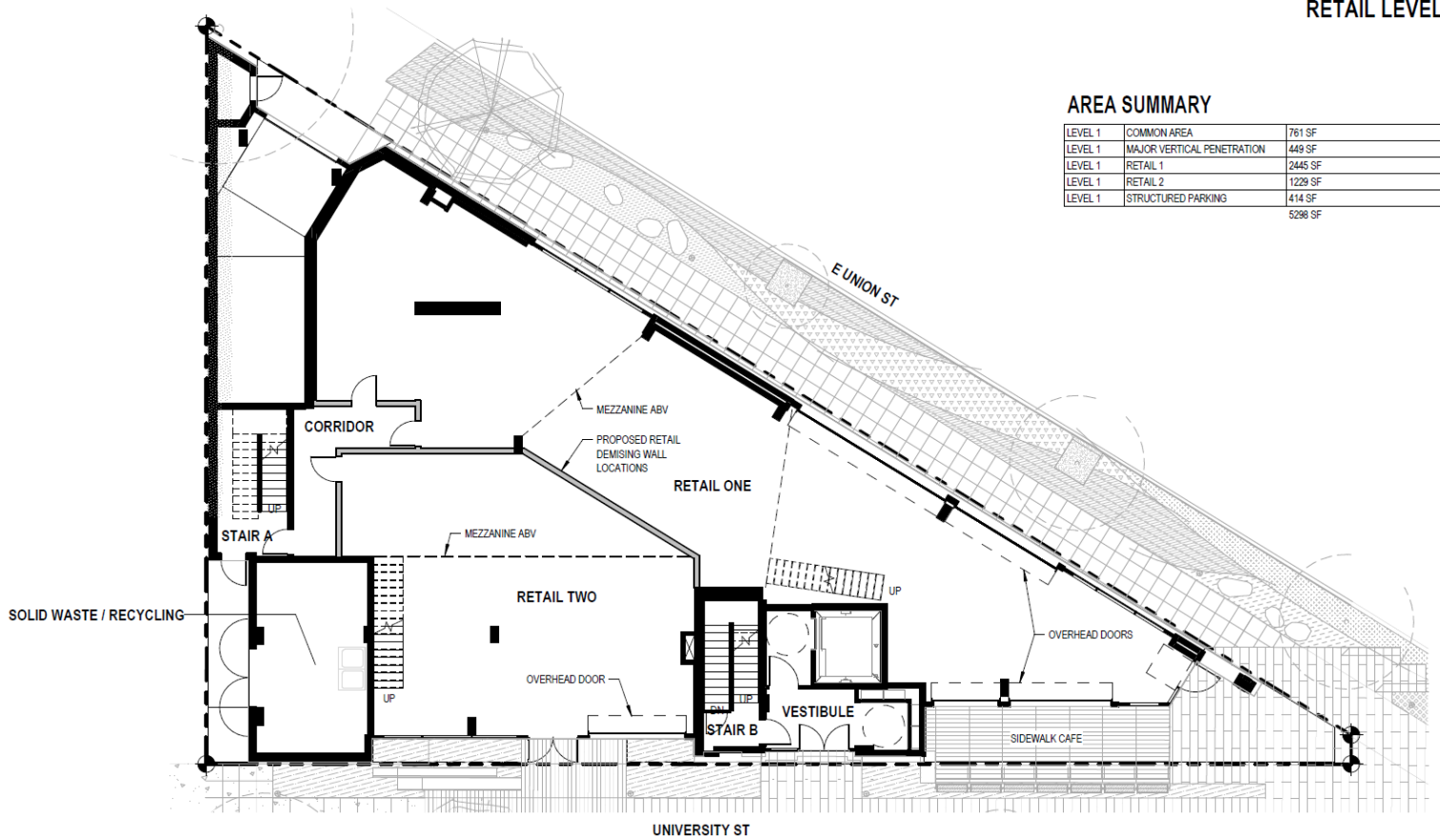
3,675 contiguous SF w/an additional 1,340 SF of Mezzanine space currently available. Square footage is divisible and flexible.

# SPACE AVAILABLE - NEW CONSTRUCTION

## First Hill Apartments

### 1320 University Street

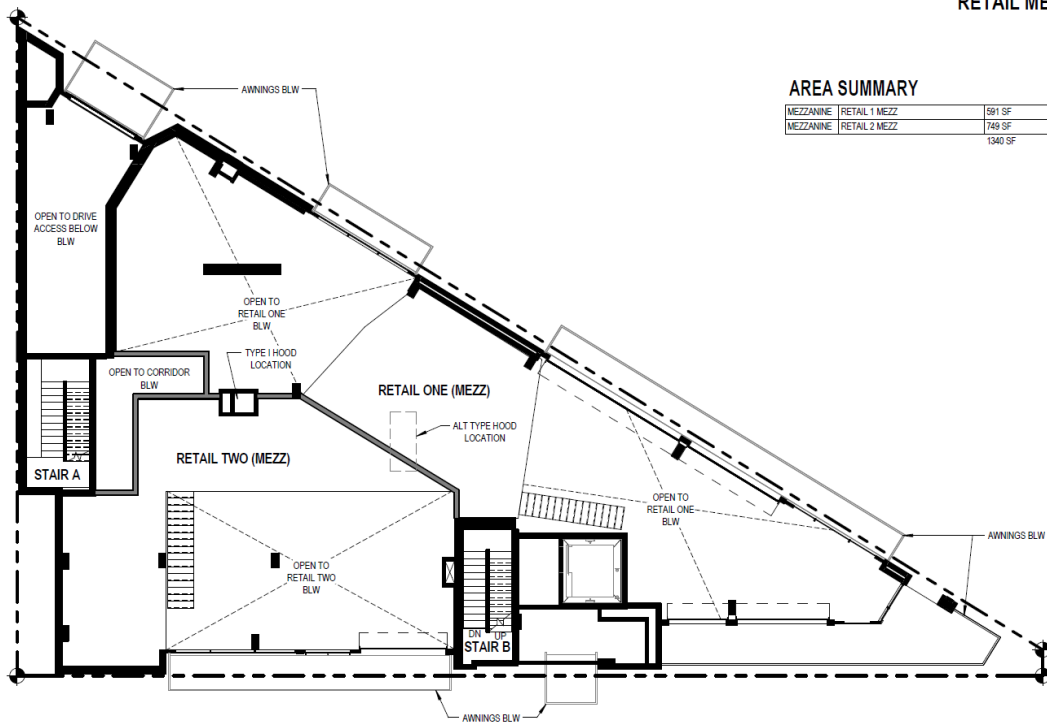
#### RETAIL LEVEL



#### AREA SUMMARY

LEVEL 1	COMMON AREA	761 SF
LEVEL 1	MAJOR VERTICAL PENETRATION	449 SF
LEVEL 1	RETAIL 1	2445 SF
LEVEL 1	RETAIL 2	1229 SF
LEVEL 1	STRUCTURED PARKING	414 SF
		5296 SF

#### RETAIL MEZZANINE



#### AREA SUMMARY

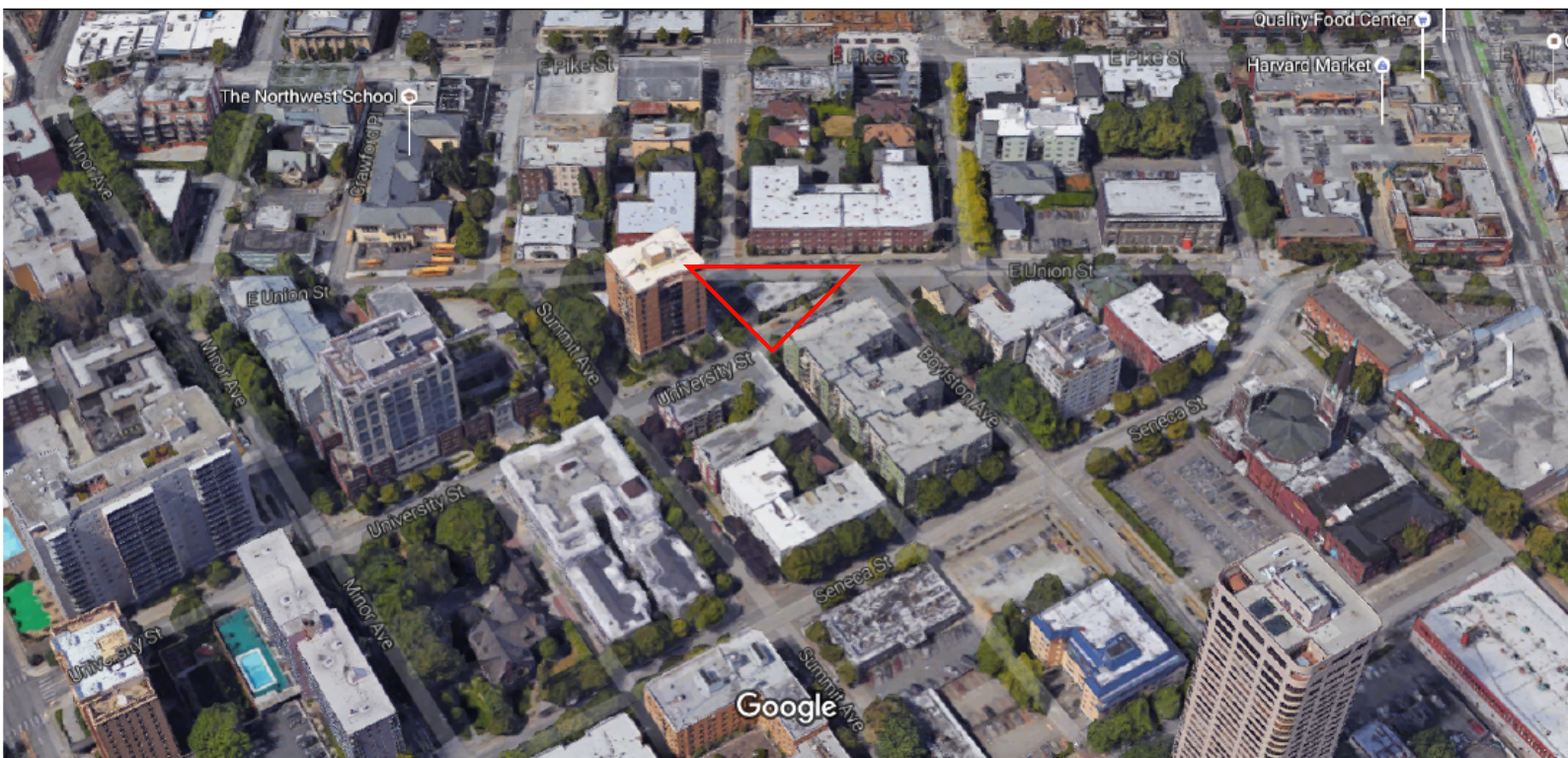
MEZZANINE	RETAIL 1 MEZZ	591 SF
MEZZANINE	RETAIL 2 MEZZ	749 SF
		1340 SF

\*Floor Plan represents a typical layout. Total square footage is divisible and flexible.

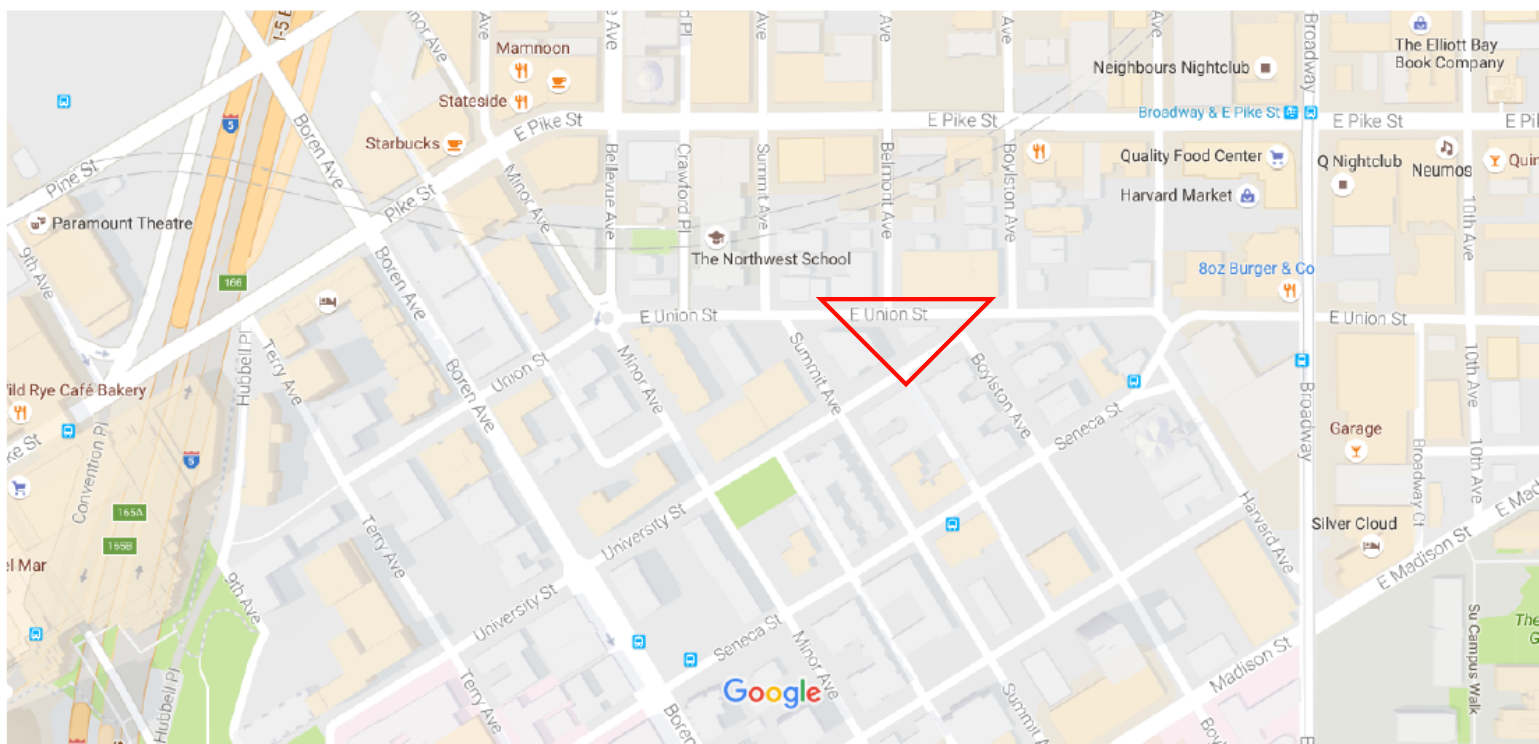
# SPACE AVAILABLE - NEW CONSTRUCTION

## First Hill Apartments

### 1320 University Street



Imagery ©2016 Google, Map data ©2016 Google 100 ft



Map data ©2016 Google 200 ft

FOR MORE INFORMATION, CALL JEREMY JUFFE AT (609) 364-2094  
CYZNER PROPERTIES.COM ▪ JEREMY@CYZNERPROPERTIES.COM