

4,480 SF RETAIL & 5,600 SF OFFICE SPACE AVAILABLE FOR LEASE

10470 River Heights Drive
South Jordan, Utah



TOM COOK
Senior Director
+1 801 303 5488
tom.cook@cushwake.com

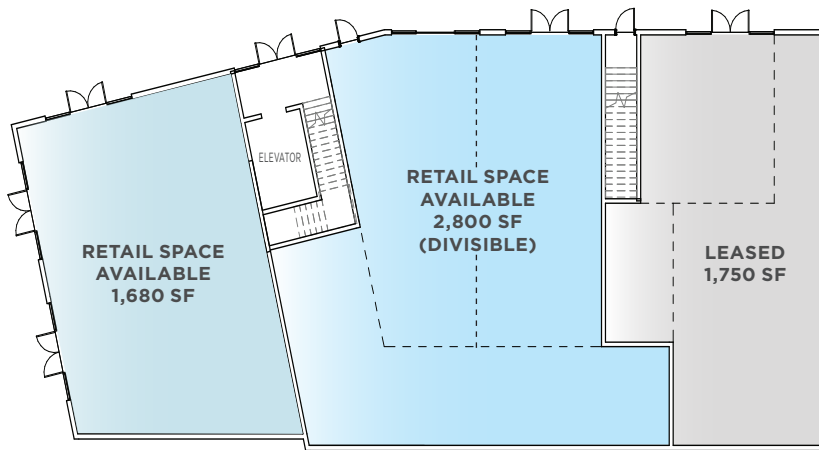
JESSE MANGUM
Managing Director
+1 801 303 5547
jesse.mangum@cushwake.com

JON SCHRECK
Director
+1 801 303 5531
jon.schreck@cushwake.com

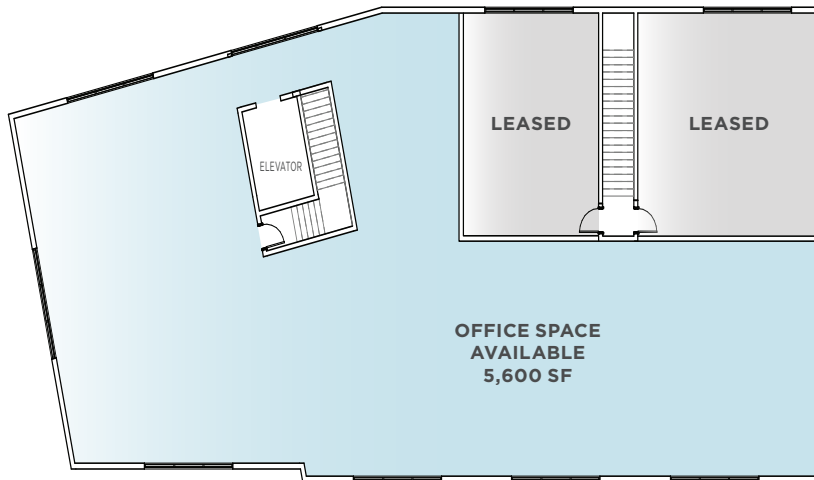


10470 RIVER HEIGHTS DRIVE

SOUTH JORDAN, UTAH



FIRST FLOOR



SECOND FLOOR

Retail / Office Building

Zoning: CC

Available Retail: 4,480 SF

Available Office: 5,600 SF

Lot Size: 0.96 Acres

Lease Rate: Contact Agent

Located at the main entrance to CostCo

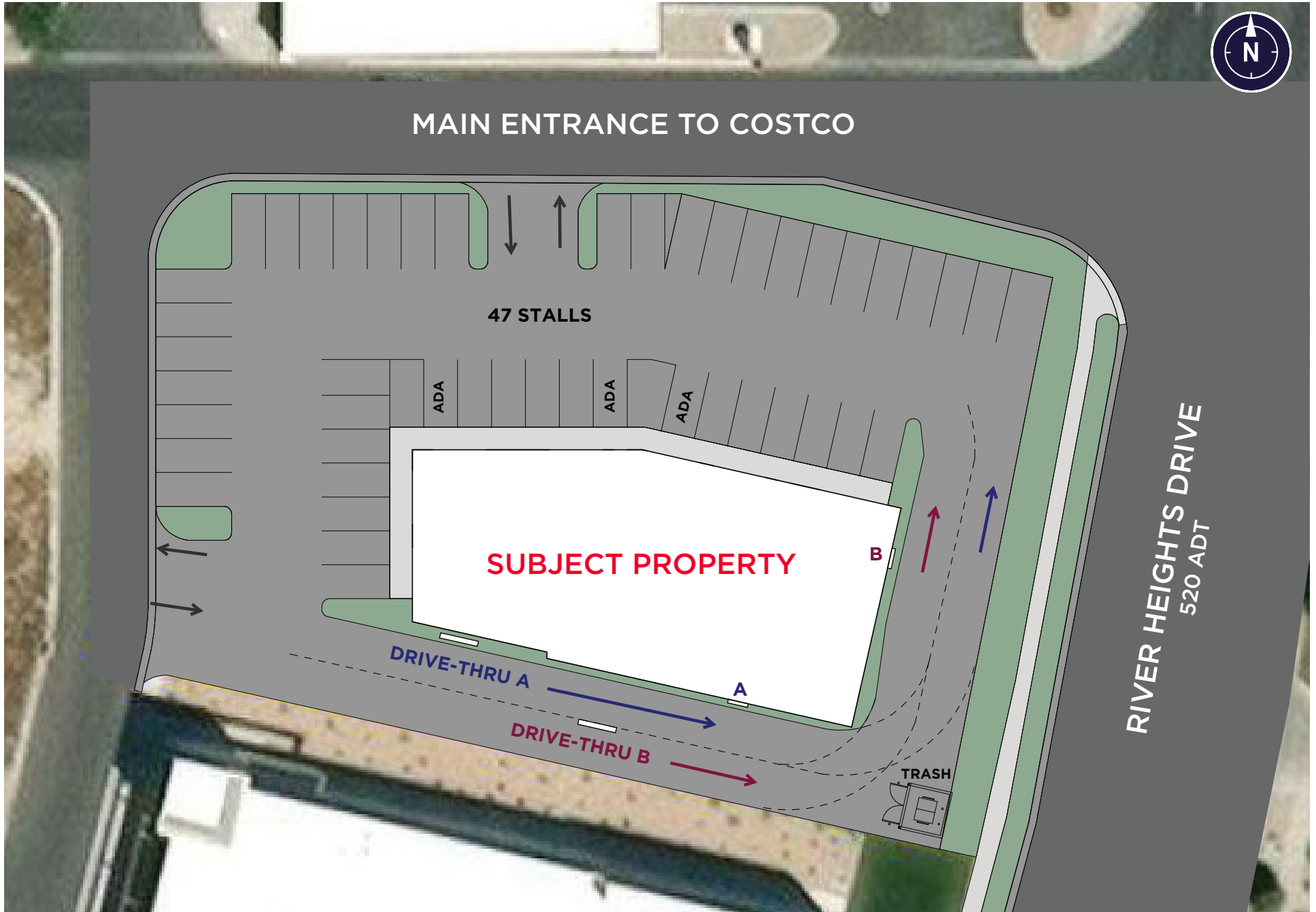
Population Summary

	1 Mile	3 Mile	5 Mile
2020 Total Population	15,094	117,504	274,780
2030 Total Population	15,378	120,921	296,555
2025 Total Daytime Population	10,413	98,568	273,324
Workers	3,517	42,045	139,495
Residents	6,896	56,523	133,829

Source: Esri, Esri-Data Axle, Esri-U.S. BLS, U.S. Census

RETAIL & OFFICE SPACE

SITE PLAN





CONTACT

TOM COOK

Senior Director
+1 801 303 5488
tom.cook@cushwake.com

JESSE MANGUM

Managing Director
+1 801 303 5547
jesse.mangum@cushwake.com

JON SCHRECK

Director
+1 801 303 5531
jon.schreck@cushwake.com

170 SOUTH MAIN STREET, SUITE 1600
SALT LAKE CITY, UT 84101
+1 801 322 2000
cushmanwakefield.com

