

Medical Office Available 110 Stone Brook Dr * Gray, GA



Lot Size: 1.5 acres

Size: 8,000 sf freestanding building

Built: 2002

Location: Located just off Highway 129 and Bill Conn Parkway

Notes: This freestanding medical building has a great floor plan. It consists of 4 pods of four (4) treatment rooms. Each pod has its own restroom. There are 5 private offices, a lab area, and employee break room, each with a restroom. The front office area contains a large waiting room with an area for children, reception area, radiology department, nurse's station and checkout. Offers a covered patient drop off and pick up. There is plenty of on-site parking.

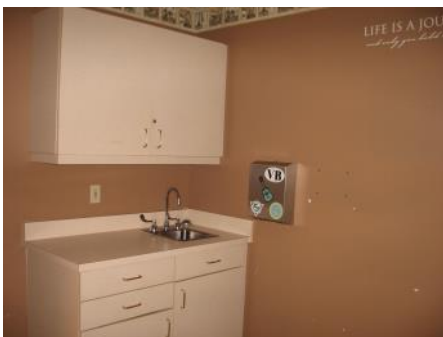
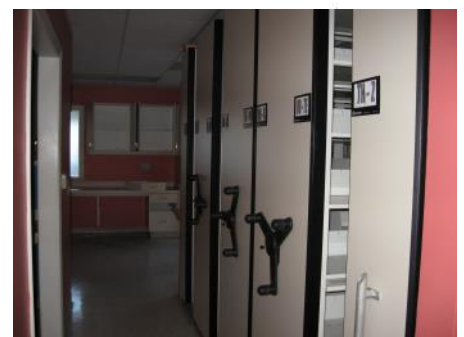
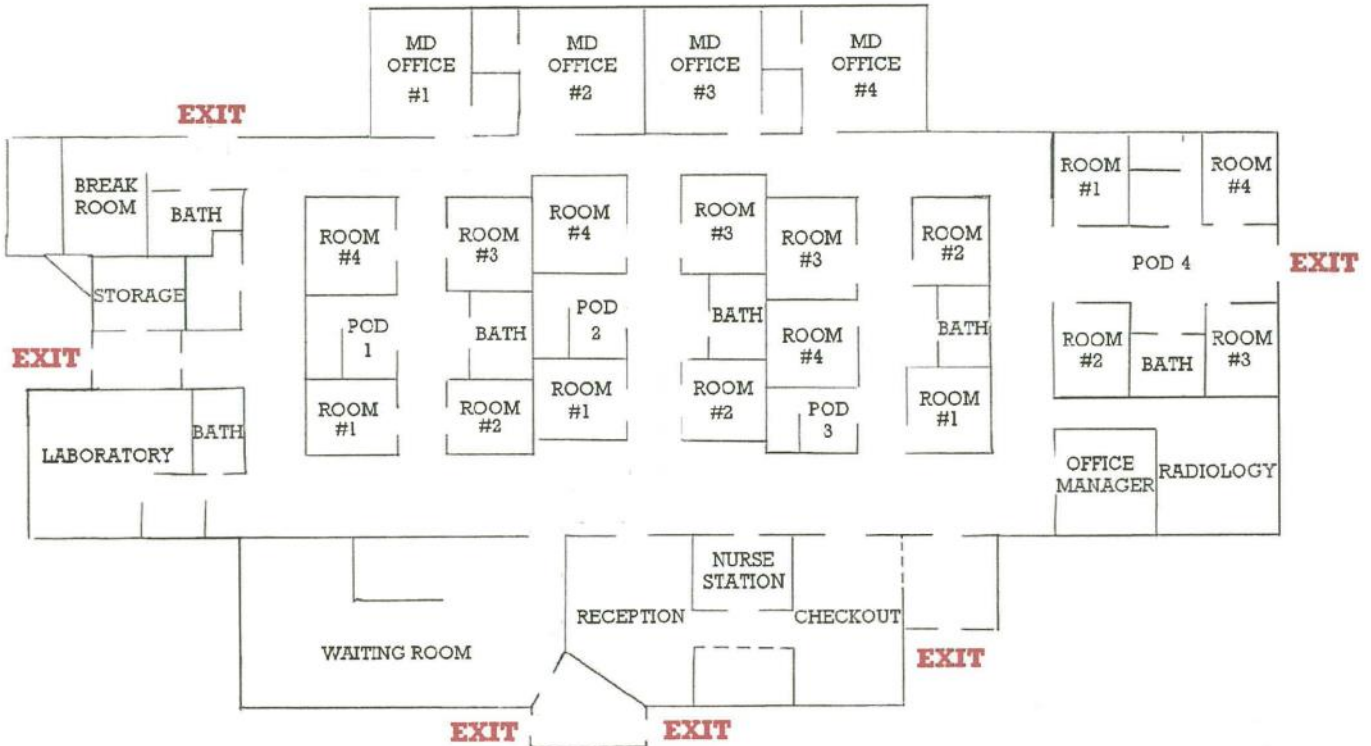
Neighbors include Ingles, Walgreens, Ace Hardware, many banks, restaurants and residential neighborhoods. This location is convenient to Macon and Milledgeville. Property taxes: \$16,668

*Floor plan on back

Lease Price: \$8.00 psf NNN
NNN estimated at \$2.35 psf

Contact Trip Wilhoit, CCIM, ALC or Patty Burns, CCIM, ALC 478-746-9421
trip@fickling.com or patty@fickling.com
See detailed property information at www.Fickling.com

Medical Office Available 110 Stone Brook Dr * Gray, GA 31032



Contact Trip Wilhoit, CCIM, ALC or Patty Burns, CCIM, ALC 478-746-9421