

2175 K STREET, NW

Washington, DC 20037

Office For Lease



The House
— of —
Europe



Leasing Information:
202.513.6700

Merrill Turnbull 202.513.6713 mturnbull@lpc.com
Adam Biberaj 202.513.6736 abiberaj@lpc.com
Tim Whitebread 202.513.6712 twhitebread@lpc.com

Lincoln

101 Constitution Avenue NW
Suite 325 East
Washington, DC 20001

www.lpc.com

2175 K STREET, NW

Washington, DC 20037

Office For Lease

3,059 - 12,259 SF

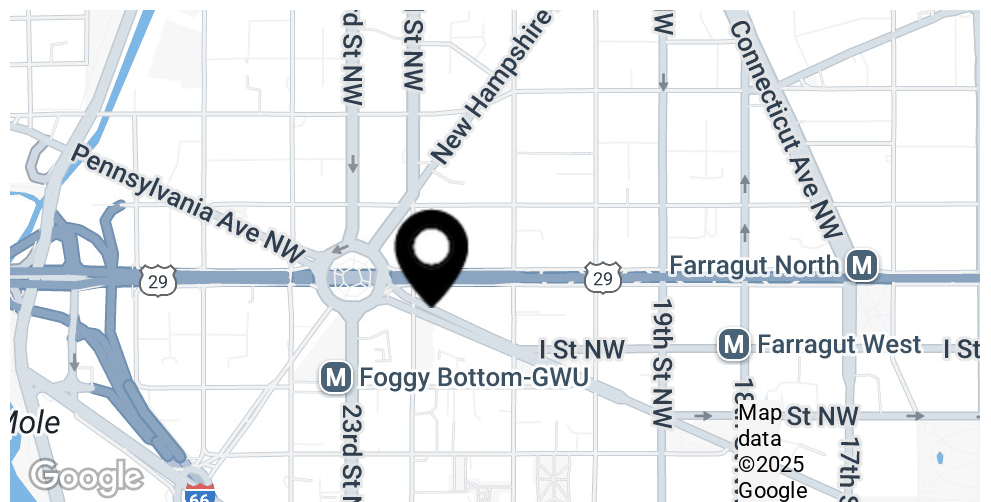


Property Highlights

- Prominent CBD location with K Street frontage
- Spectacular window lines
- Free-standing Class-A building
- On-site parking
- Tenant-only fitness center
- Two-blocks from Foggy Bottom Metro station

Availabilities

Availabilities	SF	Lease Rate	Date Available
Suite 250	3,944 SF	Negotiable	Immediately
Suite 300	3,059 SF	Negotiable	Immediately
Suite 310	3,122 SF	Negotiable	Immediately
Suite 400	12,259 SF	Negotiable	Immediately
Suite 500	8,000 - 12,259 SF	Negotiable	Immediately



Merrill Turnbull

202.513.6713
mturnbull@lpc.com

Adam Biberaj

202.513.6736
abiberaj@lpc.com

Tim Whitebread

202.513.6712
twhitebread@lpc.com

Lincoln

2175 K STREET, NW

Washington, DC 20037

3rd Floor

3,059 SF



Suite	Size	Description
■ Suite 300	3,059 SF	Elevator exposure, K Street frontage. 5 windowed offices and conference room. Available Immediately.
■ Suite 310	3,122 SF	5 windowed offices and conference room. Available immediately.

Merrill Turnbull Adam Biberaj Tim Whitebread
202.513.6713 202.513.6736 202.513.6712
mturnbull@lpc.com abiberaj@lpc.com twhitebread@lpc.com

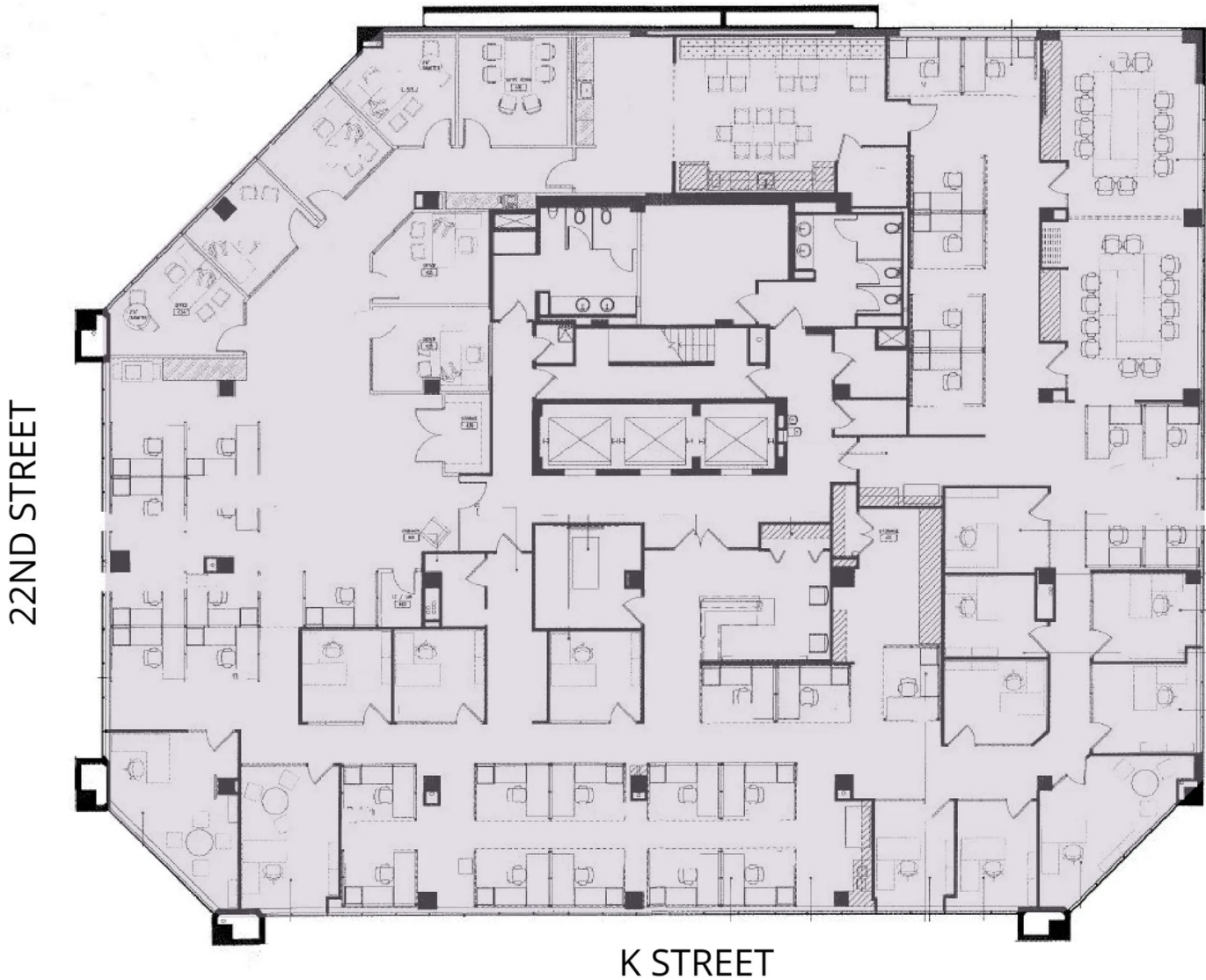
Lincoln

2175 K STREET, NW

Washington, DC 20037

4th Floor

12,259 SF



K STREET

Suite	Size	Description
■ Suite 400	12,259 SF	Full floor available. Great window line. 17 private offices with conference room, break room with pantry, and kitchenette.

Merrill Turnbull **Adam Biberaj** **Tim Whitebread**
202.513.6713 202.513.6736 202.513.6712
mturnbull@lpc.com abiberaj@lpc.com twhitebread@lpc.com

Lincoln

2175 K STREET, NW

Washington, DC 20037

4th Floor Photos

3,059 - 12,259 SF



Merrill Turnbull

202.513.6713
mturnbull@lpc.com

Adam Biberaj

202.513.6736
abiberaj@lpc.com

Tim Whitebread

202.513.6712
twhitebread@lpc.com

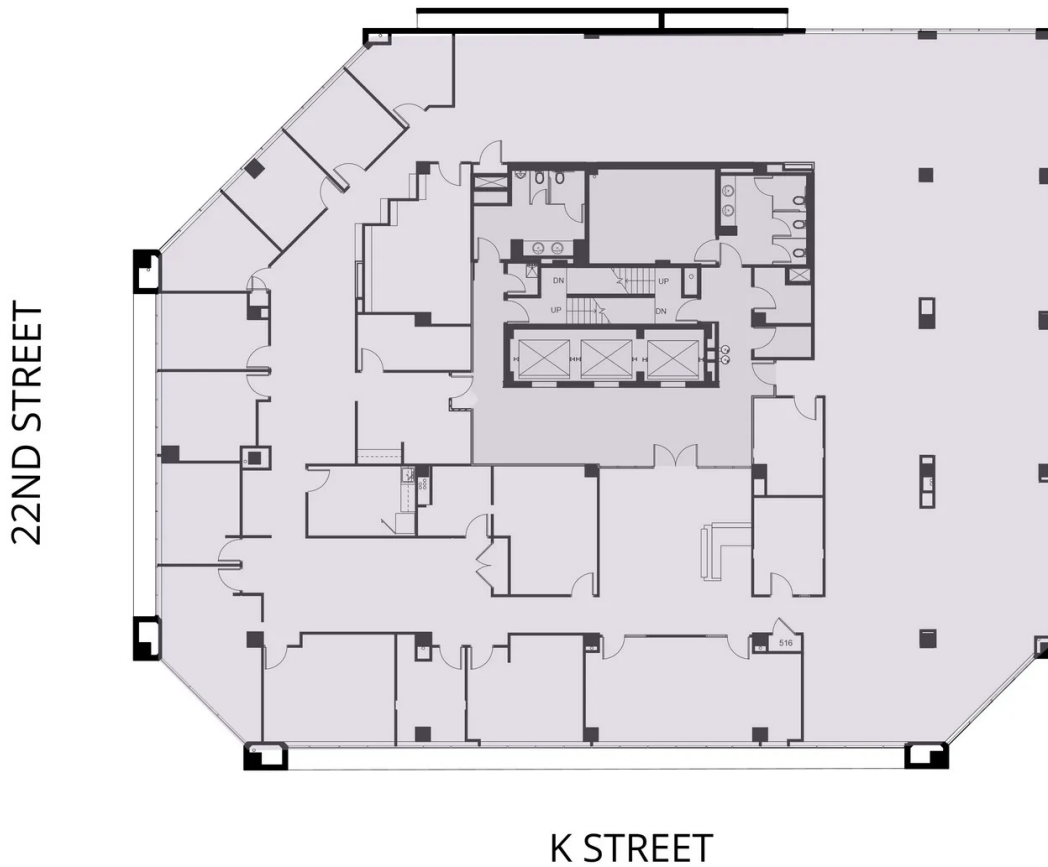
Lincoln

2175 K STREET, NW

Washington, DC 20037

5th Floor

8,000 - 12,259 SF



Suite	Size	Description
■ Suite 500	8,000 - 12,259 SF	Full floor available with four sides of glass. Great window line on K Street.

Merrill Turnbull 202.513.6713 mturnbull@lpc.com
Adam Biberaj 202.513.6736 abiberaj@lpc.com
Tim Whitebread 202.513.6712 twhitebread@lpc.com

Lincoln



2175 K STREET, NW

Washington, DC 20037

Leasing Information:
202.513.6700

Merrill Turnbull
202.513.6713
mturnbull@lpc.com

Adam Biberaj
202.513.6736
abiberaj@lpc.com

Tim Whitebread
202.513.6712
twhitebread@lpc.com

Lincoln

101 Constitution Avenue NW
Suite 325 East
Washington, DC 20001

www.lpc.com