

**47137 Wetland Road, Suite 100**  
Harrisburg, SD 57032

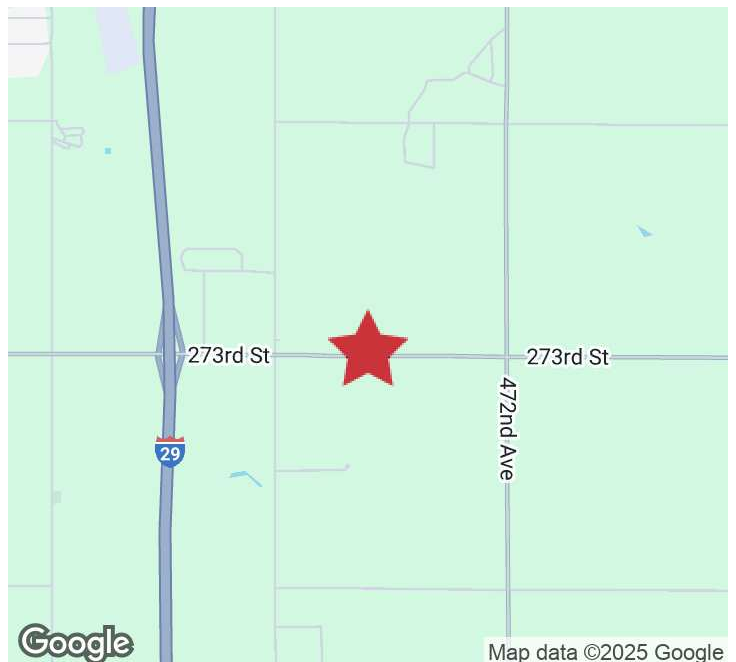
Lease Rate	<b>\$1,750 PER MONTH GROSS</b>
Suite Size (2 Levels)	<b>1,910 SF</b>

### PROPERTY HIGHLIGHTS

- Main Level: 1,102 SF
- Upper Level Office: 808 SF
- 2 offices
- Breakroom and conference room
- Reception area
- In-suite restroom
- All utilities are included

### LOCATION DESCRIPTION

Located directly on Highway 110, west of Harrisburg, SD Area neighbors include Nielson Construction, MH Equipment, SealPros Asphalt Paving, Snapfon, RV & Boat Storage, Select Painting, Select Companies, Frankman Auto Body



**CRAIG HAGEN, CCIM, SIOR**  
Senior Vice President  
chagen@naisiouxfalls.com  
605.310.4227

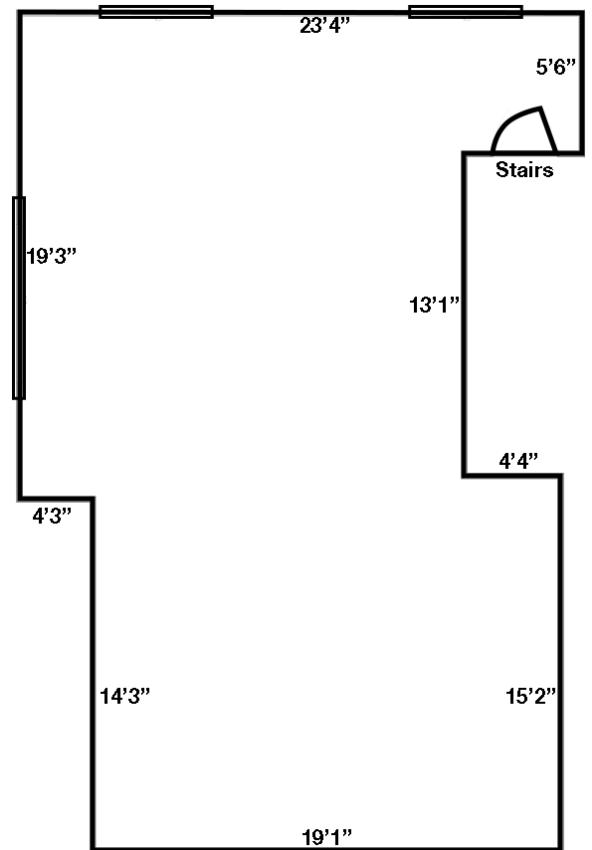
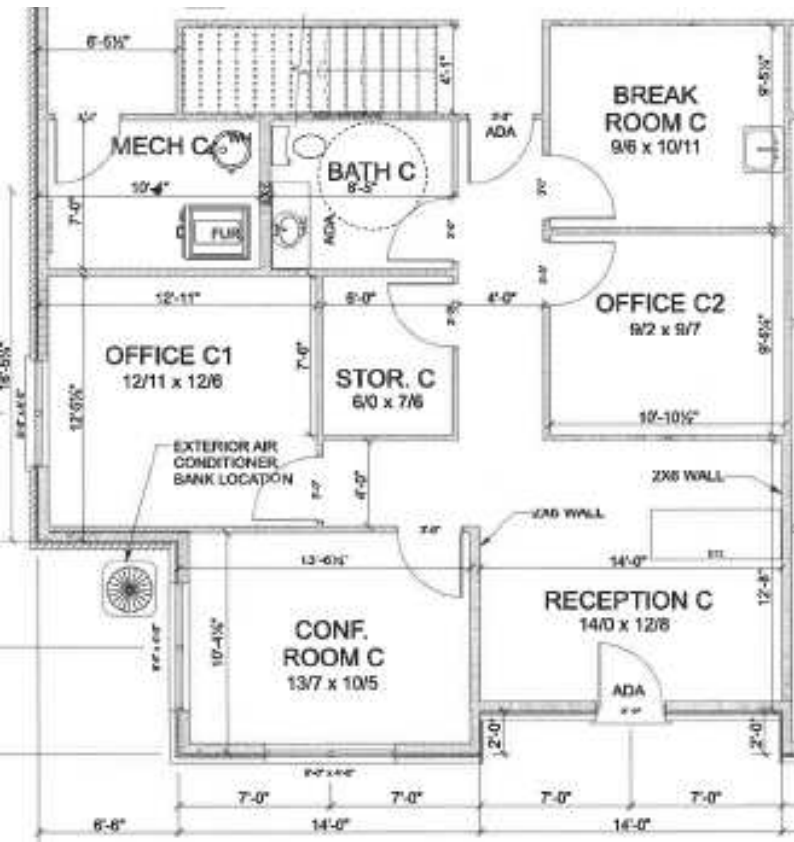
2500 W. 49th St. Suite 100  
Sioux Falls, SD 57105  
605.357.7100  
[naisiouxfalls.com](http://naisiouxfalls.com)

# FLOOR PLANS

47137 WETLAND ROAD, SUITE 100  
Harrisburg, SD 57032

# FOR LEASE

Office Space



Main Level

Upper Level

# PHOTOS

47137 WETLAND ROAD, SUITE 100  
Harrisburg, SD 57032

# FOR LEASE

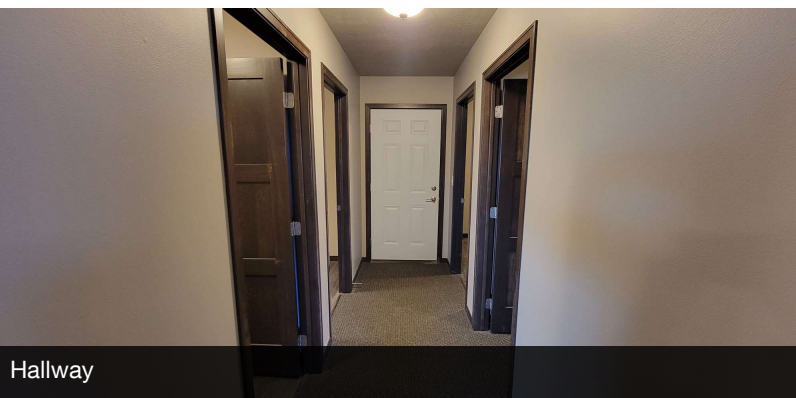
Office Space



Office



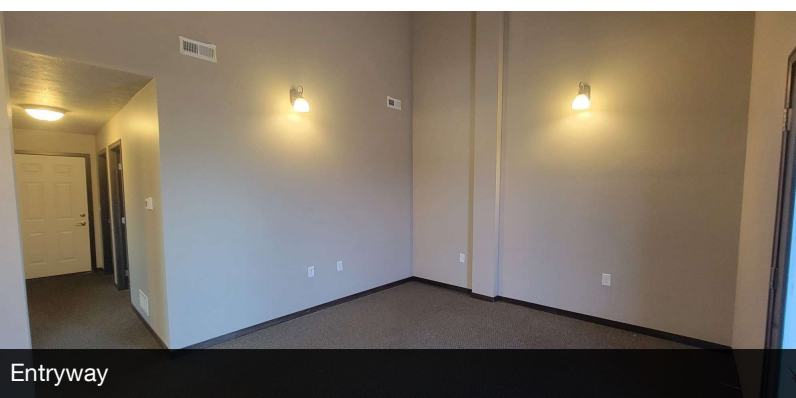
Breakroom



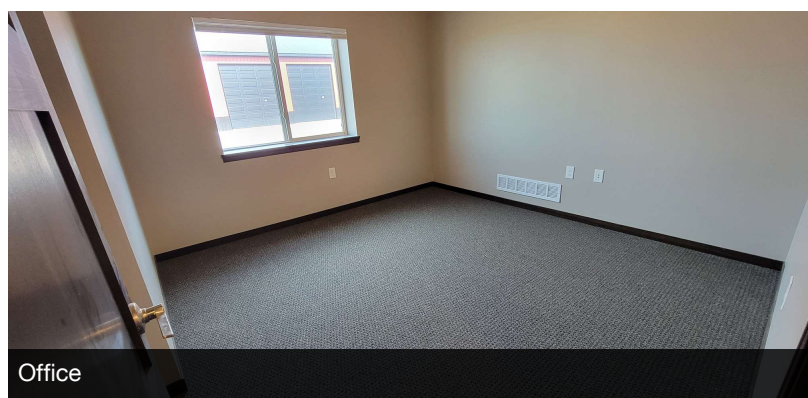
Hallway



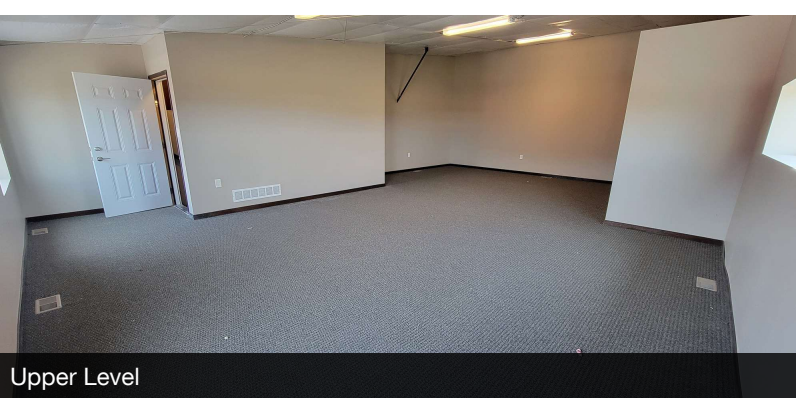
Offices



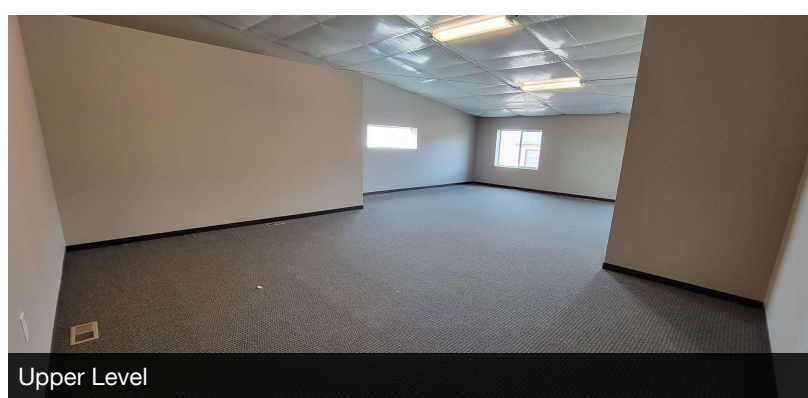
Entryway



Office



Upper Level



Upper Level

# AERIAL

47137 WETLAND ROAD, SUITE 100  
Harrisburg, SD 57032

# FOR LEASE

Office Space



Map data ©2025 Imagery ©2025 Airbus, Maxar Technologies, USDA/FPAC/GEO