

LONGLEY PROFESSIONAL CAMPUS



PROPERTY OVERVIEW

- Available Space** Suite B: 2,104 square Feet
- Lease Rate** **\$2.20 PSF Modified Gross**
- Highlights**
- Customize the space! Generous TI allowance available to add offices. Plus large open space perfect to add additional offices or numerous workstations
 - Located in the Longley Professional Campus, a master plan controlled campus with fully maintained lush landscaping that provides a professional environment
 - Strategic Meadowood East location in South Reno which gives all the amenities of Meadowood without the congestion
 - Within a mile of the Northern NV Sierra Medical Center as well as retail shops and restaurants
 - Spacious reception area, break room and storage room



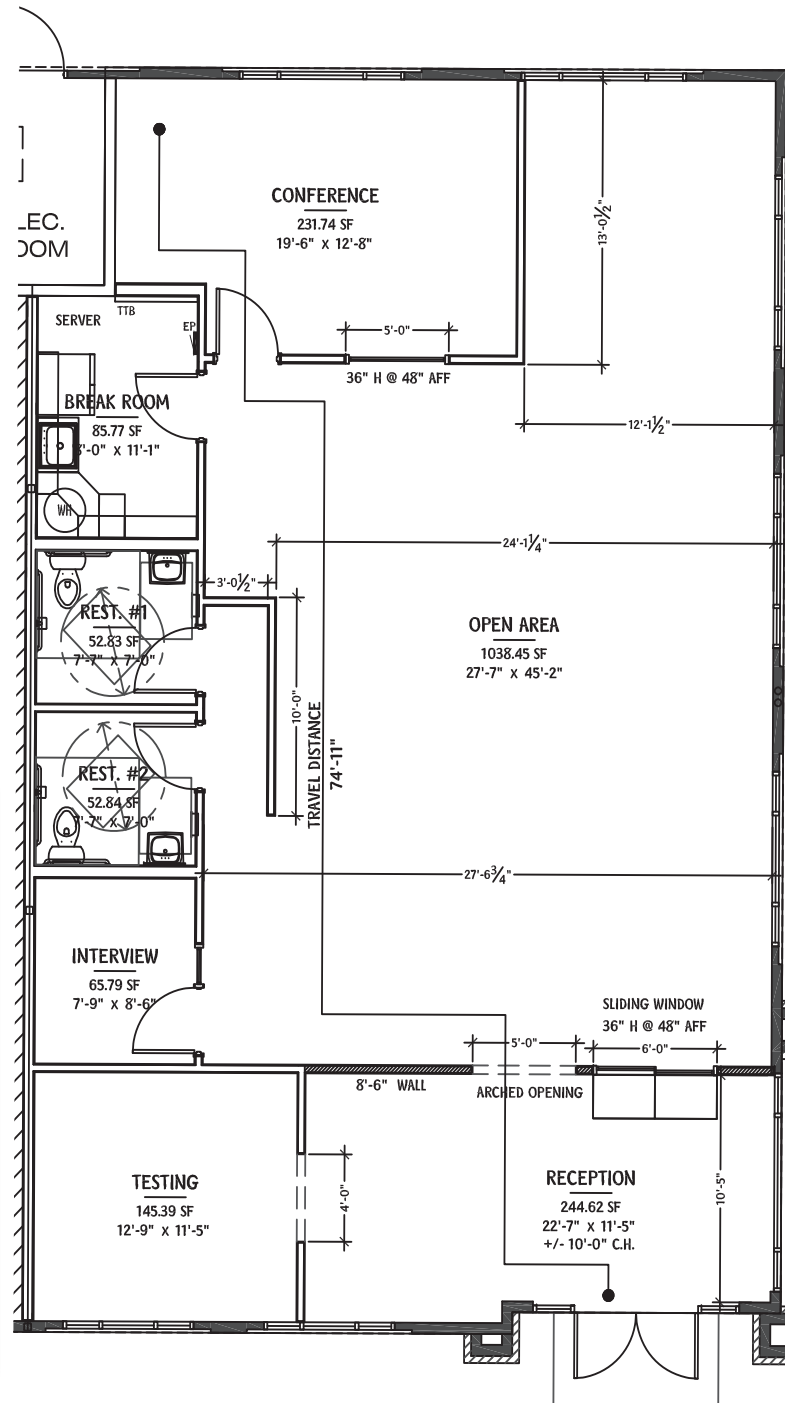
MIKE VAN BLARICOM
PRINCIPAL
MIKEV@ARCHCRESTNV.COM
C: 775.250.9531
NV LIC S.0066330

KEVIN ANNIS, SIOR, CCIM
BROKER/PRINCIPAL
KANNIS@ARCHCRESTNV.COM
C: 775.742.2539
NV LIC B.1000617.LLC

MELANIE STEWART
TRANSACTION COORDINATOR
MSTEWART@ARCHCRESTNV.COM
P: 775.852.9800 x 205
NV LIC S.0061263

775.852.9800
WWW.ARCHCRESTNV.COM

LONGLEY PROFESSIONAL CAMPUS



MIKE VAN BLARICOM
PRINCIPAL
MIKEV@ARCHCRESTNV.COM
C: 775.250.9531
NV LIC S.0066330

KEVIN ANNIS, SIOR, CCIM
BROKER/PRINCIPAL
KANNIS@ARCHCRESTNV.COM
C: 775.742.2539
NV LIC B.1000617.LLC

MELANIE STEWART
TRANSACTION COORDINATOR
MSTEWART@ARCHCRESTNV.COM
P: 775.852.9800 x 205
NV LIC S.0061263

775.852.9800
WWW.ARCHCRESTNV.COM