

FOR LEASE

911 E ORCHARD STREET
 MUNDELEIN, IL 60060

CONTACT US TODAY:

Eric Wagener
 847-706-7155
 ewagener@owenwagener.com

Owen Wagener & Co.
 37 Sherwood Terrace
 Suite 122
 Lake Bluff, IL 60044
 www.owenwagener.com

MULTI-TENANT
 INDUSTRIAL | FLEX



SPECS:

- OPEN WAREHOUSE W/ NATURAL LIGHT
- MULTIPLE LAYOUT OPTIONS
- EXCELLENT LOADING W/ 3 DOCK DOORS
- HEAVY POWER - 6,400 AMPS | 480 VOLT | 3-PHASE
- NEW LED LIGHTING
- MINUTES TO I-94, ROUTE 45 & 176

Building Size:	63,463
Lot Size:	3 Acres
Unit Size:	13,674 SF
Description:	Multi-Tenant Industrial Flex
Year Built:	1978, Renovated in 2018
Parking:	Ample
Heat:	Gas Forced Air
Ceiling Height:	17'
Loading:	3 Dock Doors
Zoning:	M-1
Lease Rate:	\$11,338.00 Per Month



911 E ORCHARD STREET
MUNDELEIN, IL 60060

13,674 SF



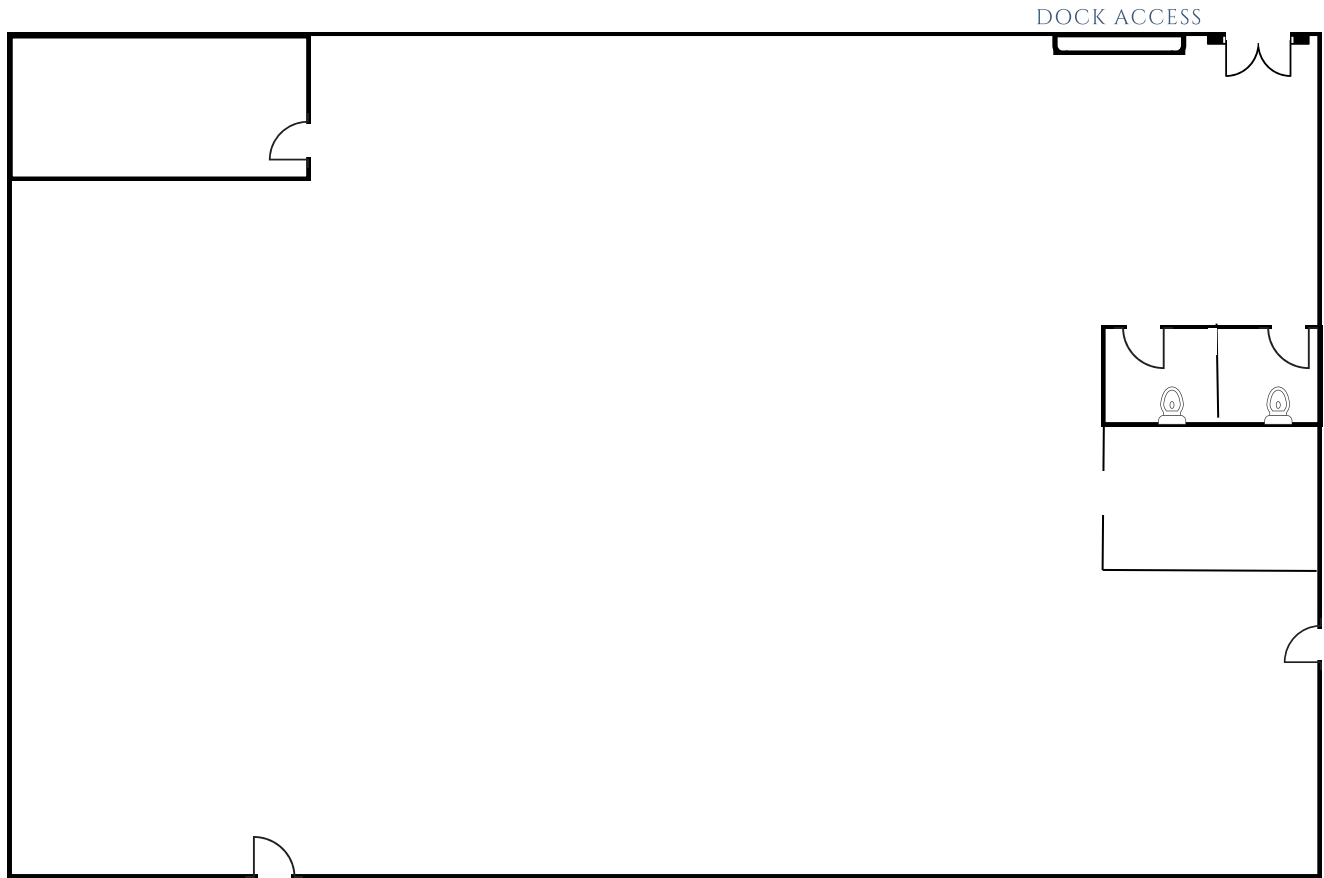
YOUR CHICAGOLAND COMMERCIAL
REAL ESTATE EXPERT, SINCE 1964.

WWW.OWENWAGENER.COM

911 E ORCHARD STREET
MUNDELEIN, IL 60060

13,674 SF

FLOOR PLAN



YOUR CHICAGOLAND COMMERCIAL
REAL ESTATE EXPERT, SINCE 1964.