



# Class A Office Sublease Available

**DEER CREEK ONE**  
**12721 METCALF AVENUE, OVERLAND PARK, KANSAS**

## Property Highlights

- 7,934 (±) rsf available
- Sublease available through June 30, 2028
- Furniture is available
- Excellent opportunity for any type of professional services or tech firm
- High-end finishes
- Proximity to shops and restaurants along 119th and 135th Street
- Deer Creek One is minutes from Highways I-435 and 69 Highway
- Sublease rate \$22.00/sf

*For information, please contact:*

**Nick Suarez, SIOR, CCIM**  
*Executive Managing Director, Principal*  
t 816-512-1012  
nsuarez@nzimmer.com

**Tommy Gentry**  
*Associate Director*  
t 816-268-4249  
tgentry@nzimmer.com

1220 Washington Street, Suite 300  
Kansas City, MO 64105

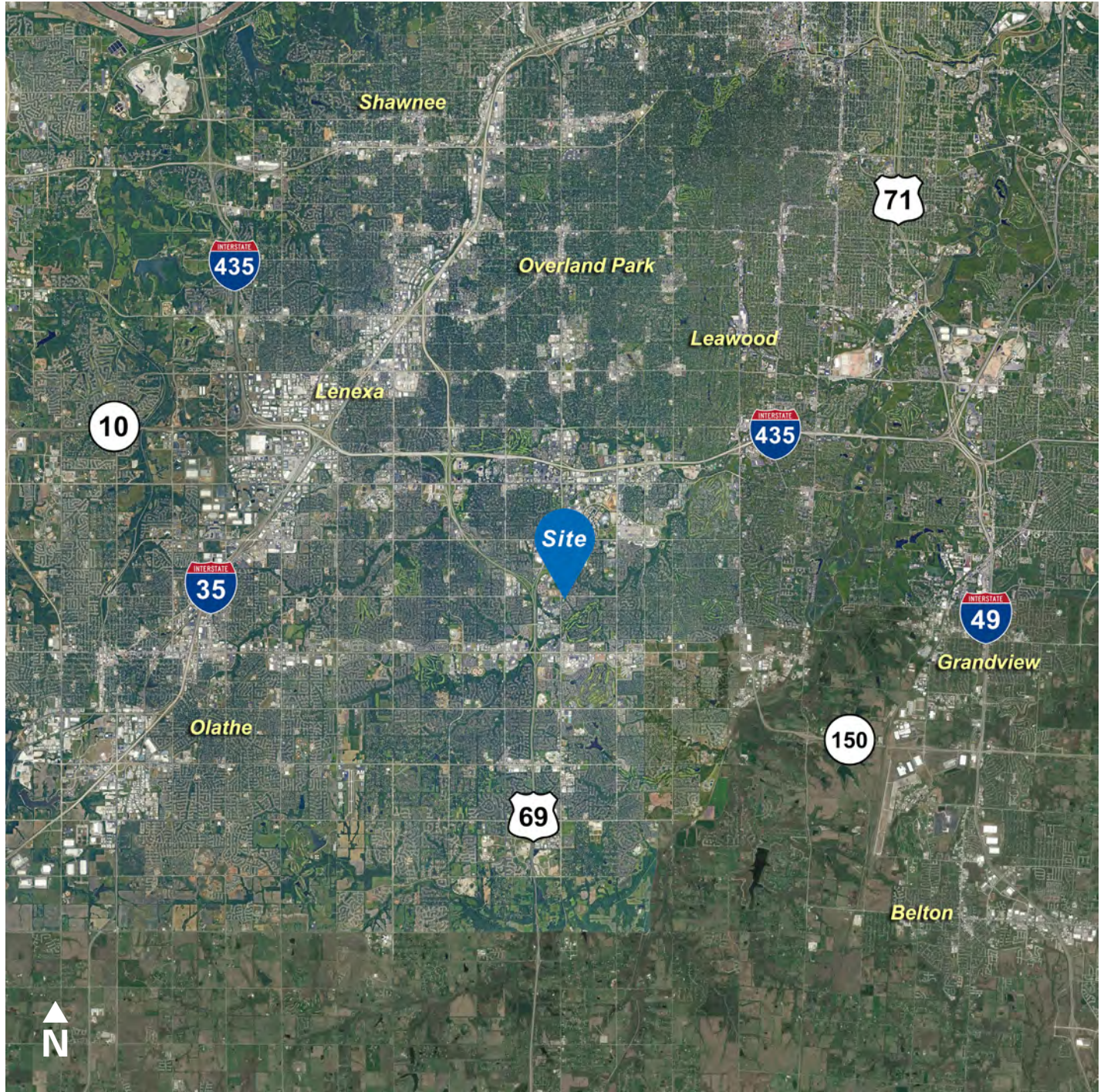
[nrmkzimmer.com](http://nrmkzimmer.com)



**NEWMARK**  
ZIMMER

The information contained herein has been obtained from sources deemed reliable but has not been verified and no guarantee, warranty or representation, either express or implied, is made with respect to such information. Terms of sale or lease and availability are subject to change or withdrawal without notice.

12721 METCALF AVENUE, OVERLAND PARK, KANSAS

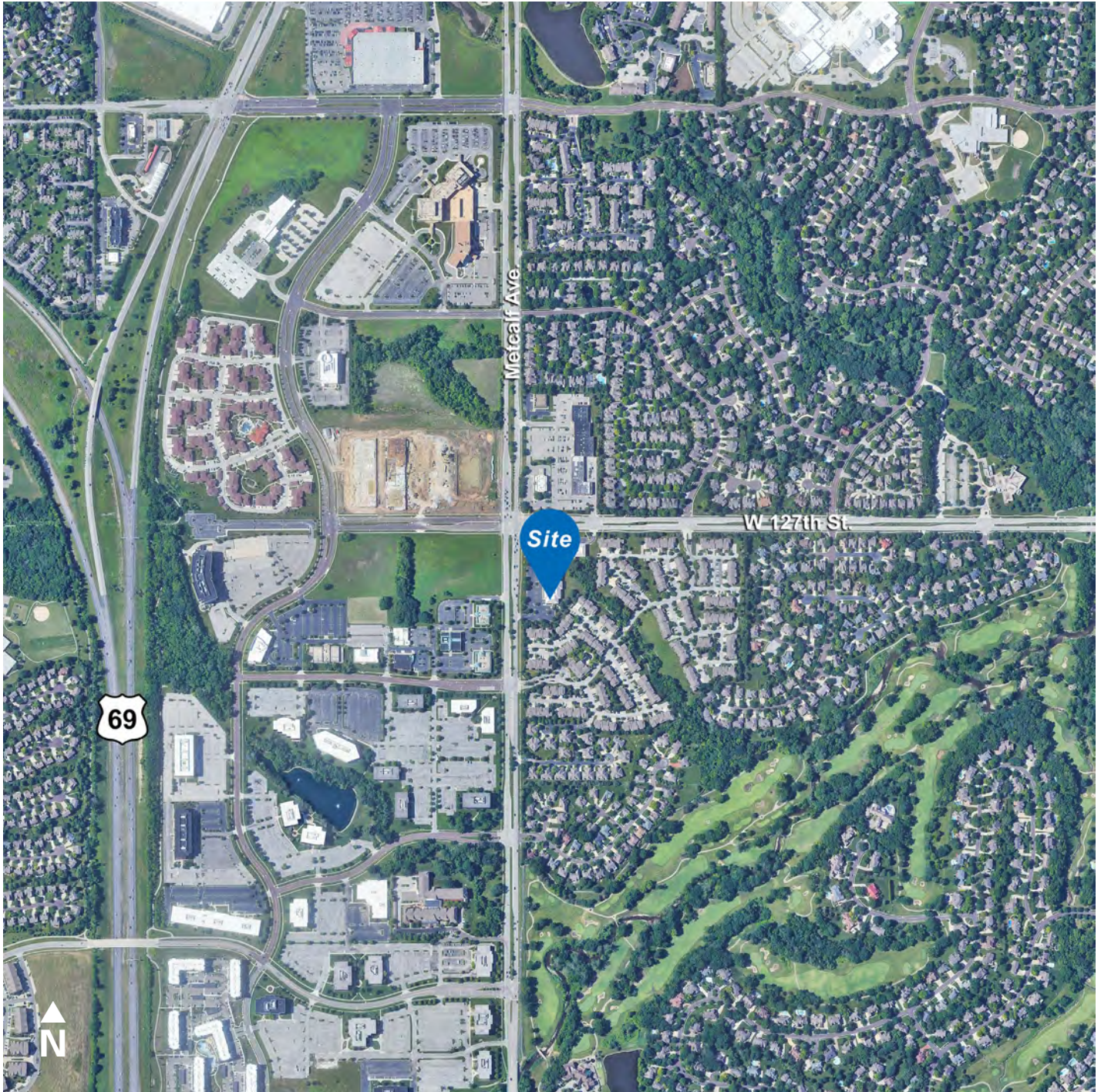


CONTACT

**Nick Suarez, SIOR, CCIM**  
*Executive Managing Director, Principal*  
t 816-512-1012  
nsuarez@nzimmer.com  
[nmrkzimmer.com](http://nmrkzimmer.com)

**Tommy Gentry**  
*Associate Director*  
t 816-268-4249  
tgentry@nzimmer.com

12721 METCALF AVENUE, OVERLAND PARK, KANSAS



CONTACT

**Nick Suarez, SIOR, CCIM**  
*Executive Managing Director, Principal*  
t 816-512-1012  
nsuarez@nzimmer.com

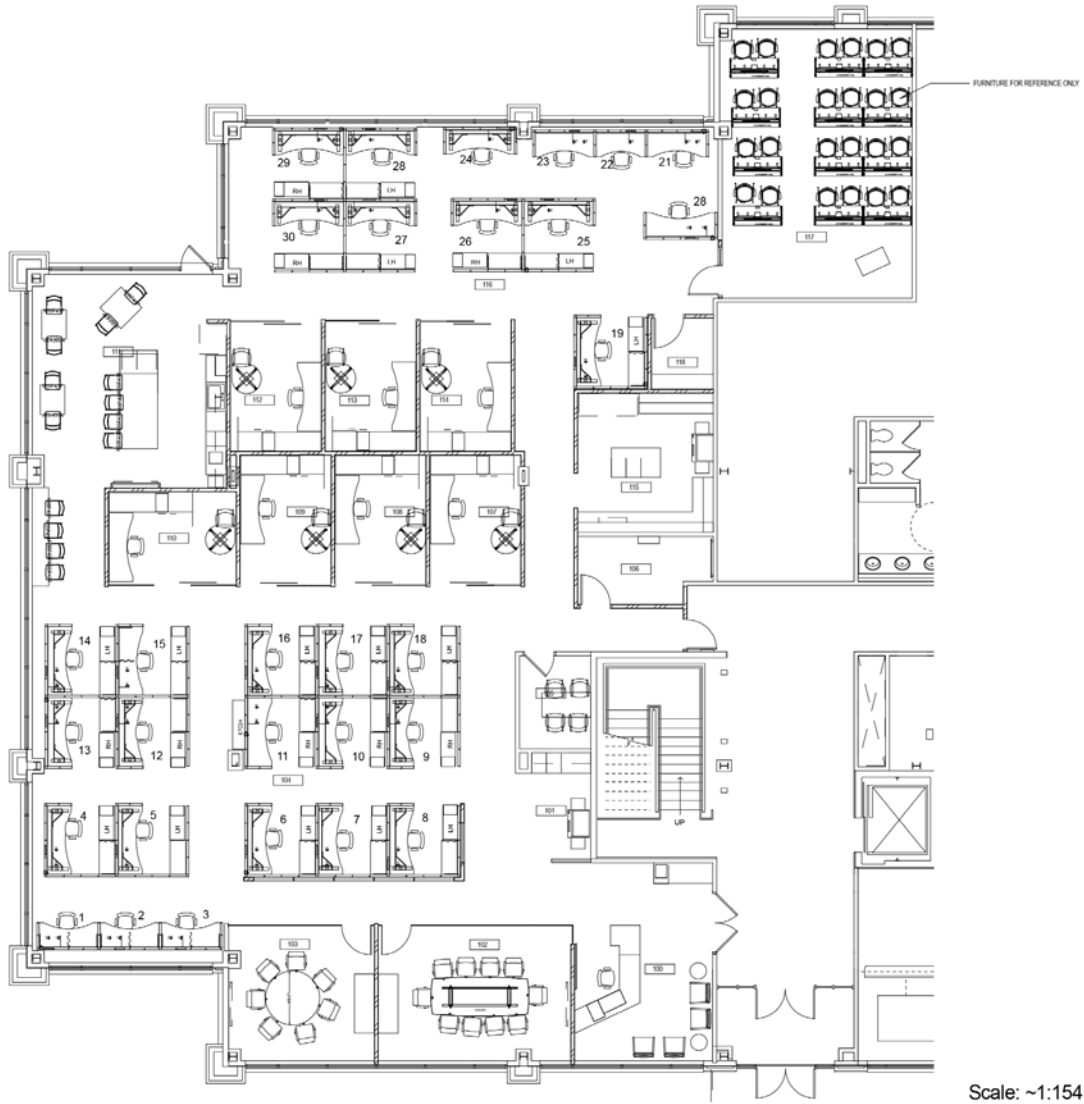
[nmrkzimmer.com](http://nmrkzimmer.com)

**Tommy Gentry**  
*Associate Director*  
t 816-268-4249  
tgentry@nzimmer.com

**NEWMARK**  
ZIMMER

12721 METCALF AVENUE, OVERLAND PARK, KANSAS

Floor Plan

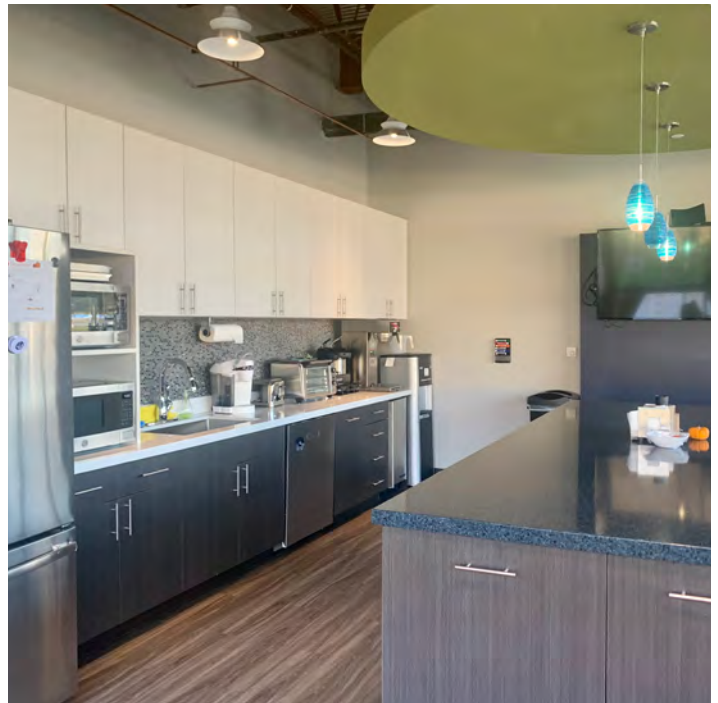


CONTACT

**Nick Suarez, SIOR, CCIM**  
*Executive Managing Director, Principal*  
t 816-512-1012  
nsuarez@nzimmer.com  
[nmrkzimmer.com](http://nmrkzimmer.com)

**Tommy Gentry**  
*Associate Director*  
t 816-268-4249  
tgentry@nzimmer.com

12721 METCALF AVENUE, OVERLAND PARK, KANSAS



**CONTACT**

**Nick Suarez, SIOR, CCIM**  
*Executive Managing Director, Principal*  
t 816-512-1012  
nsuarez@nzimmer.com  
[nmrkzimmer.com](http://nmrkzimmer.com)

**Tommy Gentry**  
*Associate Director*  
t 816-268-4249  
tgentry@nzimmer.com

**NEWMARK**  
ZIMMER