



Mequon Research Center

N Baehr Road at W Executive Drive
Mequon, WI 53092



About the Property

Mequon Research Center is a mixed-use business community located near the intersection of W Donges Bay Road and N Baehr Road in Mequon, Wisconsin.

Mequon Research Center is comprised of six buildings, totaling more than 190,600 square feet of office and flex/R&D space. Tenant sizes from 1,500 square feet to 48,400 square feet of space offer businesses straight-forward, economical and high-utility space.



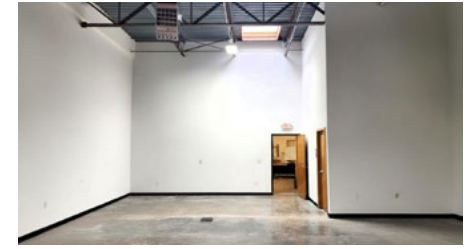
Flex/R&D/Office Buildings

6000 W Executive Drive	30,300 SF
6040 W Executive Drive	30,300 SF
6100 W Executive Drive	30,300 SF
10520 N Baehr Road	48,400 SF
10650 N Baehr Road	21,000 SF

Building Specifications

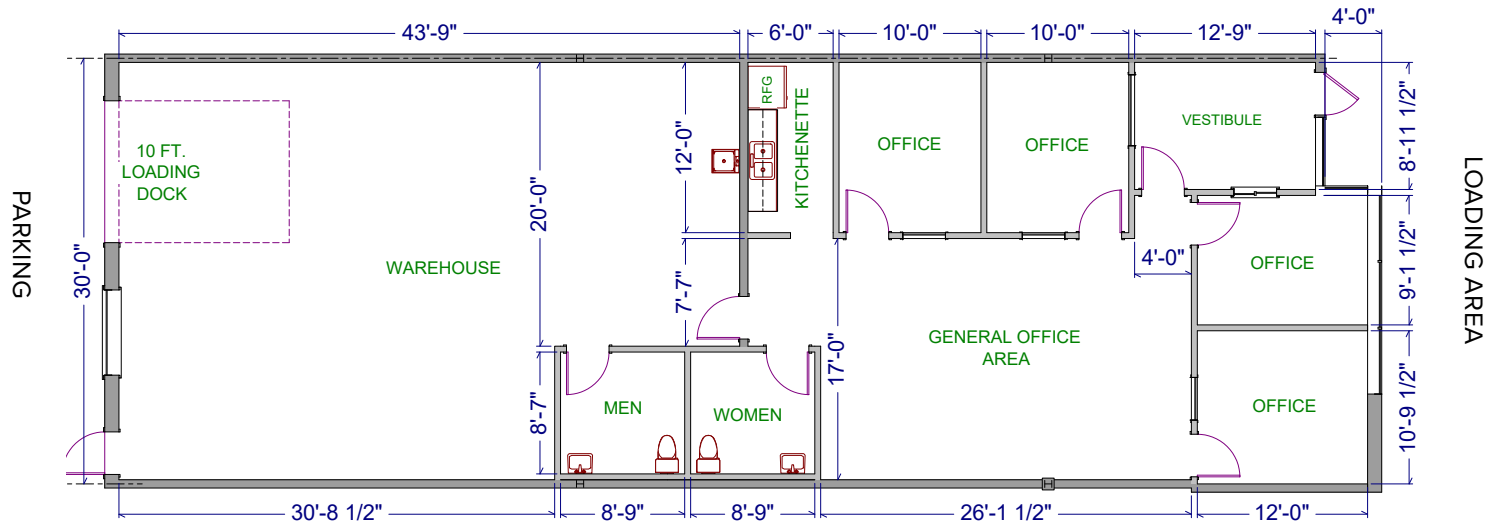
Ceiling Height	16 ft. clear minimum
Parking	
W Executive Drive	2 spaces/1,000 SF
N Baehr Road	4.5-5 spaces/1,000 SF
Construction	Brick on block
Zoning	B-5

For more information on Mequon Research Center, visit: sjpi.com/mequon



Total SF Available:
2,700 SF

1,478 sq. ft. office, 1,222 sq. ft. warehouse with private offices (4), open office area, kitchenette, warehouse area, and 10' dock loading door (1)



Note: This space plan is subject to existing field conditions. This drawing is proprietary and the exclusive property of St. John Properties, Inc. Any duplications, distribution, or other unauthorized use is strictly prohibited.

Availabilities

Office Space at Mequon Research Center

2,700 sq. ft.	6000 W Executive Drive	Ste. F	1,478 sq. ft. office, 1,222 sq. ft. warehouse with private offices (4), open office area, kitchenette, warehouse area, and 10' dock loading door (1)
---------------	------------------------	--------	--

Contact Us

Gregory Fax

Regional Partner, Wisconsin

GFax@sjpi.com | 262.524.0100

Wisconsin Regional Office:

2000 Pewaukee Road | Suite A

Waukesha, WI 53188



262.524.0100 | SJPI.COM/WISCONSIN