

8430 SANTA MONICA BLVD., WEST HOLLYWOOD, CA

High visibility creative office space in West Hollywood

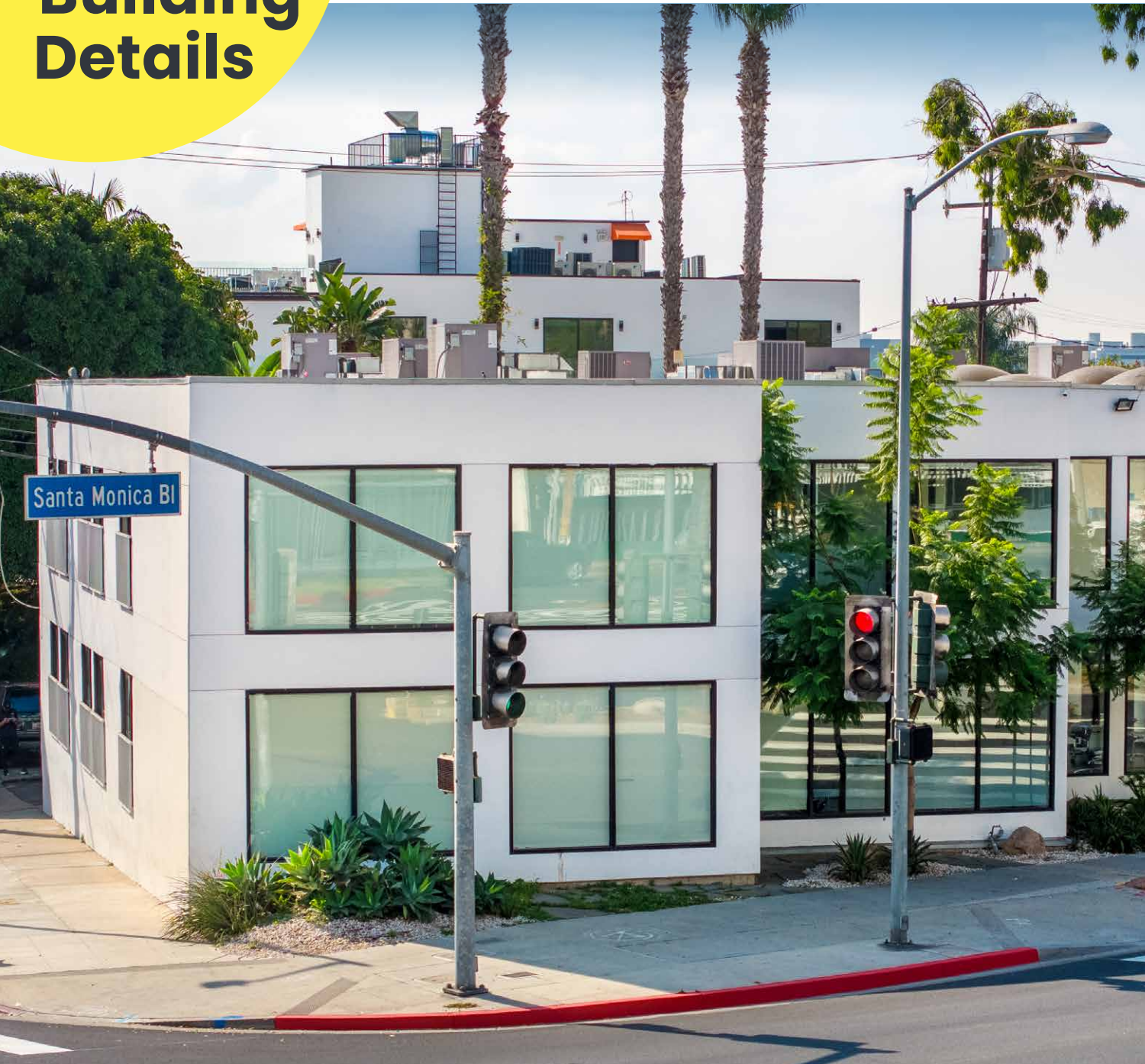


JARED SWEDELSON
Vice President
d: 818-742-1632
m: 818-644-7597
jswedelson@naicapital.com
Cal DRE Lic #02105146

NAI CAPITAL - WEST LOS ANGELES
11835 W. Olympic Blvd., Suite 700E
Los Angeles, CA 90064
d: 310-806-6100
f: 310-806-6101
www.naicapital.com

NAI Capital
COMMERCIAL REAL ESTATE SERVICES, WORLDWIDE

Building Details



Lease Rate:

2nd Floor: \$3.95/SF Gross

Spaces:

2nd Floor:

Unit 200: 1,079 SF

Parking:

1/500

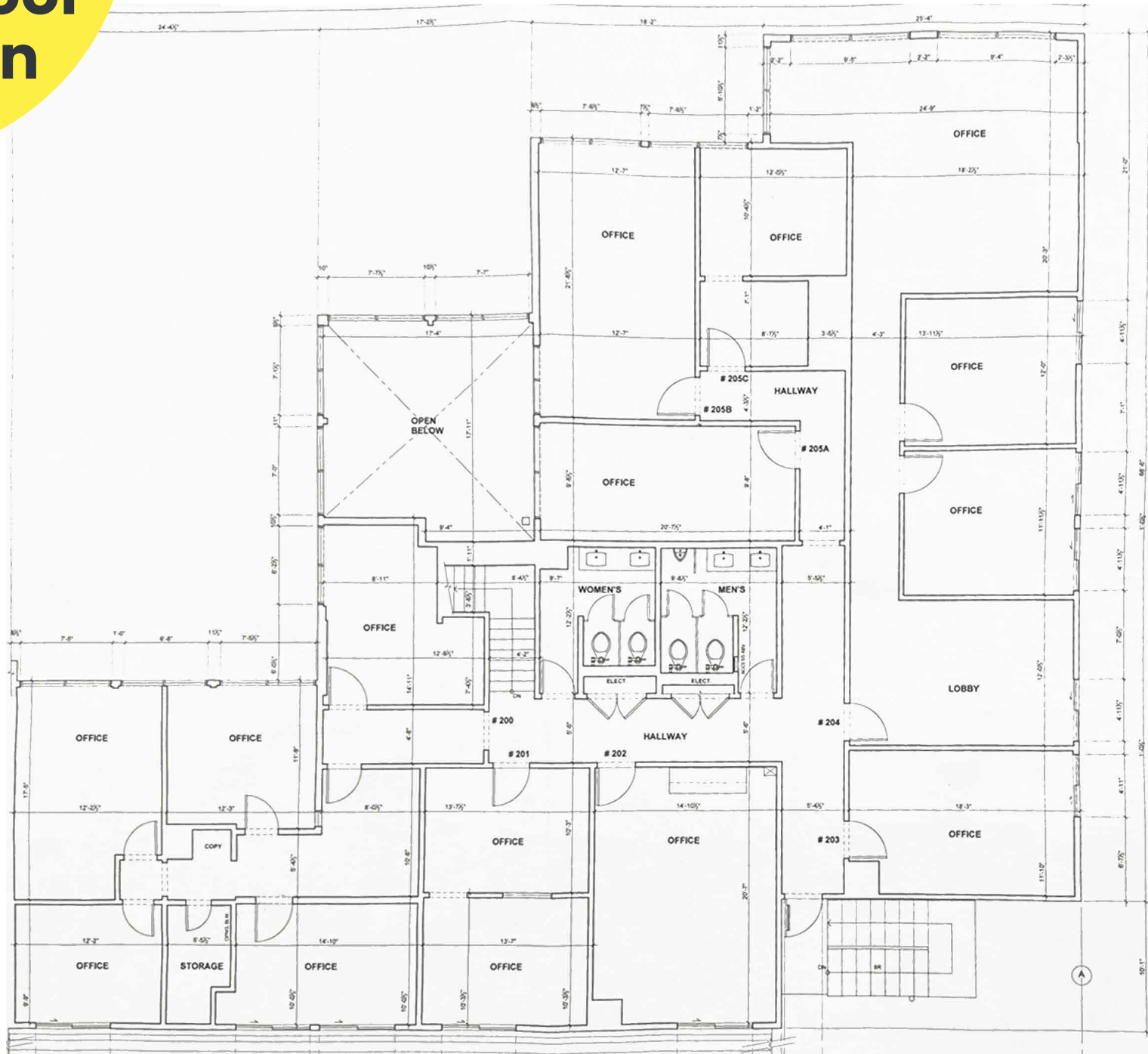
2nd Floor



Unit 200:
1,079 SF
4 private offices,
storage and
outdoor patio deck



2ND Floor Plan



Retail Map

WEST HOLLYWOOD



PDC
PACIFIC DESIGN CENTER

JR JOHN REED
FITNESS

SHAKE SHACK

HARMONY STUDIOS
PILATES

SOHO HOUSE

BARNEY'S BEATORY
1911-1920

SITE

Google Earth

Contact Info

JARED SWEDELSON

Vice President
d: 818-742-1632
m: 818-644-7597
jswedelson@naicapital.com
Cal DRE Lic #02105146

NAI CAPITAL - WEST LOS ANGELES

11835 W. Olympic Blvd., Suite 700E
Los Angeles, CA 90064
d: 310-806-6100
f: 310-806-6101
www.naicapital.com

No warranty, express or implied, is made as to the accuracy of the information contained herein. This information is submitted subject to errors, omissions, change of price, rental or other conditions, withdrawal without notice, and is subject to any special listing conditions imposed by our principals, cooperating brokers, buyers, tenants and other parties who receive this document should not rely on it, but should use it as a starting point of analysis, and should independently confirm the accuracy of the information contained herein through a due diligence review of the books, records, files and documents that constitute reliable sources of the information described herein. NAI Capital Cal DRE #02130474

NAI Capital
COMMERCIAL REAL ESTATE SERVICES, WORLDWIDE