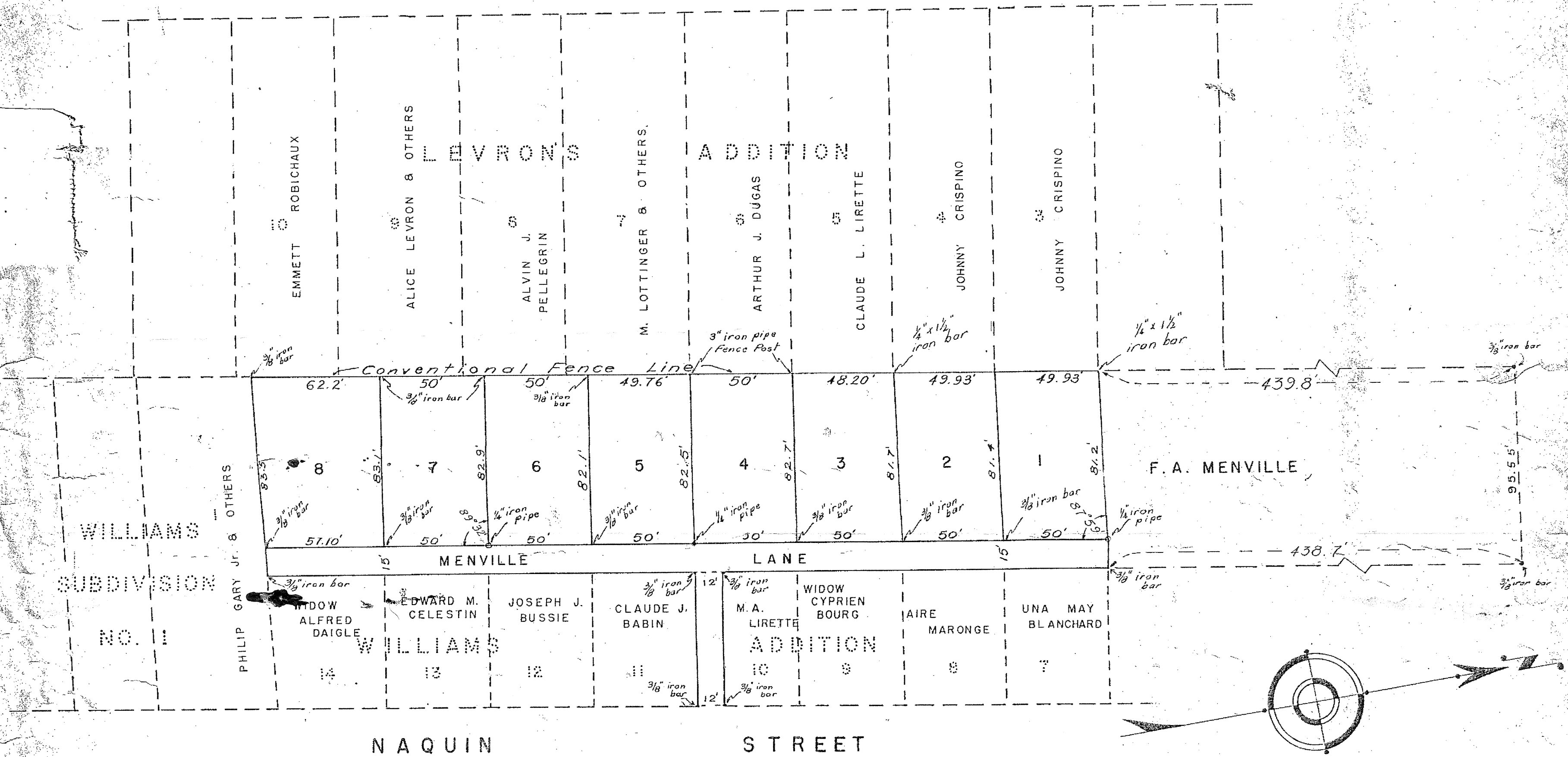


LEVRON STREET



DESCRIPTION OF PROPERTY SUBDIVIDED

A certain tract of land situated in the City of Houma, Parish of Terrebonne, Louisiana on the Right descending bank of Bayou Terrebonne, bounded on the East by Williams Addition, on the South by Lot 1, Block A of Williams Subdivision No. 1, on the West by Levron's Addition and on the North by the property belonging to F. A. Menville.

All of the described property being located in Section 6, T17S, R17E.

I hereby certify that this plat is in accordance with the provisions of Act No. 51 of the 1930 session of the Legislature of Louisiana and I hereby approve the same.

Bernard B. Davis
Civil Engineer

MENVILLE SUBDIVISION

BEING A SUBDIVISION OF PROPERTY BELONGING TO F. A. MENVILLE.

LOCATED IN SECTION 6, T17S, R17E.

SCALE - 1" = 40'

APRIL 8, 1950.

HOUMA, LA.

BERNARD B. DAVIS
CIVIL ENGINEER

APPROVED: *Bernard B. Davis*
Registered in Accordance With Louisiana Law