

200

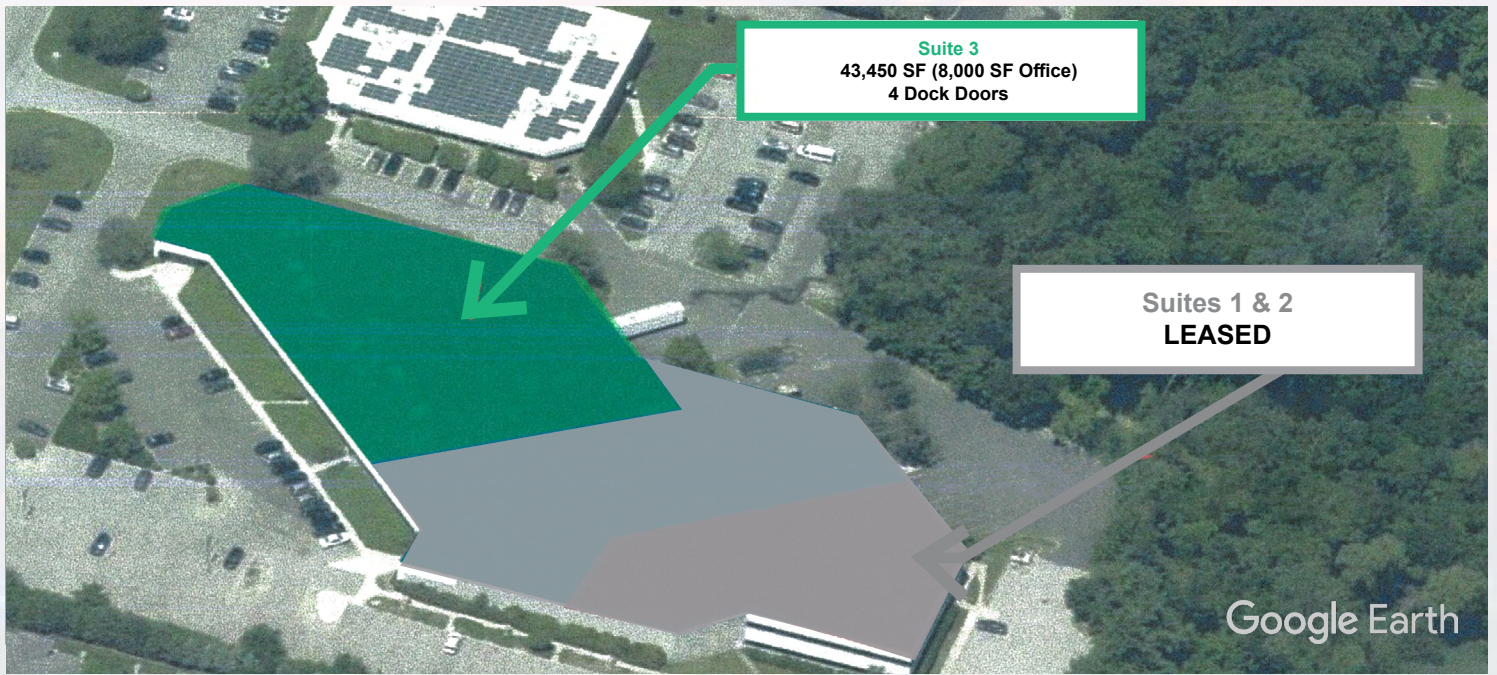
**WILLIAMS
DRIVE**

FOR LEASE IN RAMSEY, NJ



**43,450 SF Industrial facility
located in the Northwest Bergen submarket.**

CBRE



Suite 3
 43,450 SF (8,000 SF Office)
 4 Dock Doors

Suites 1 & 2
LEASED

Google Earth

BUILDING SPECIFICATIONS

Available SF	43,450 SF
Available Office SF	8,000 SF
Floors	2
Acres	8.66
Year Built	1982
Ceiling Height	25' clear
Column Spacing	40'w x 40'd
Loading	4 docks
Lighting	LED
Sprinkler	ESFR
Parking	Heavy Parking, 211 Spaces for the building
Power	300 Amps (Ability to increase power to 1200 Amps)

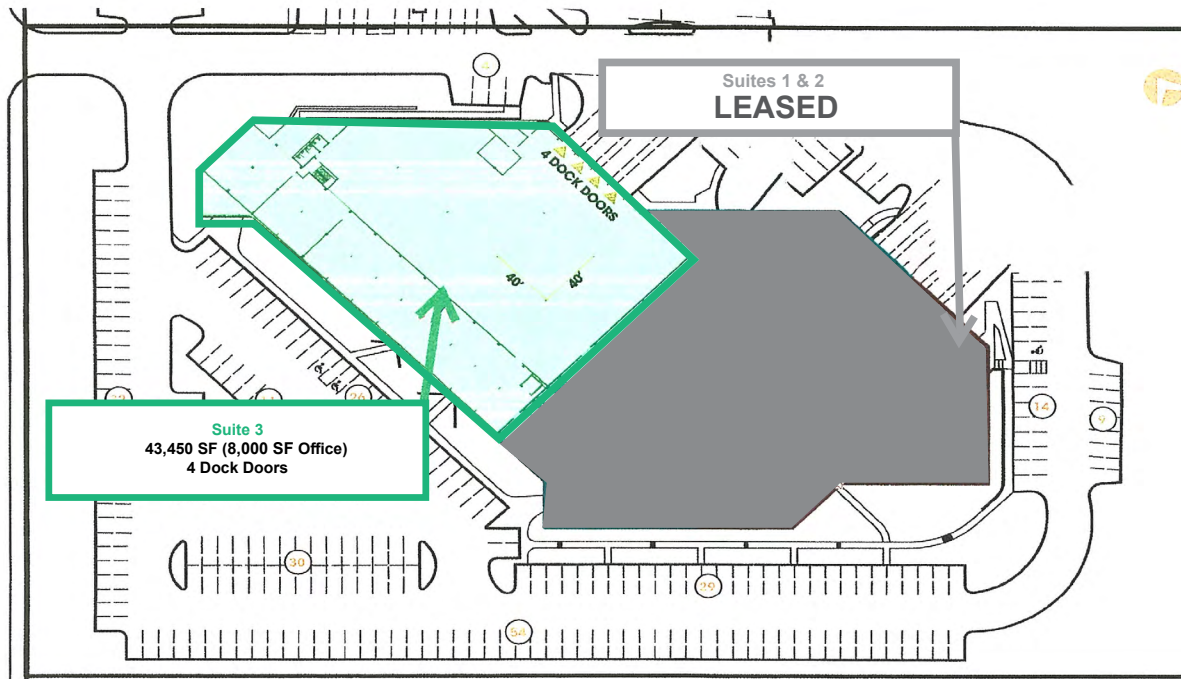
OTHER DETAILS

Taxes & CAM	±\$3.45(2023)
Comments	- Building has 1 freight elevator in Suite 3

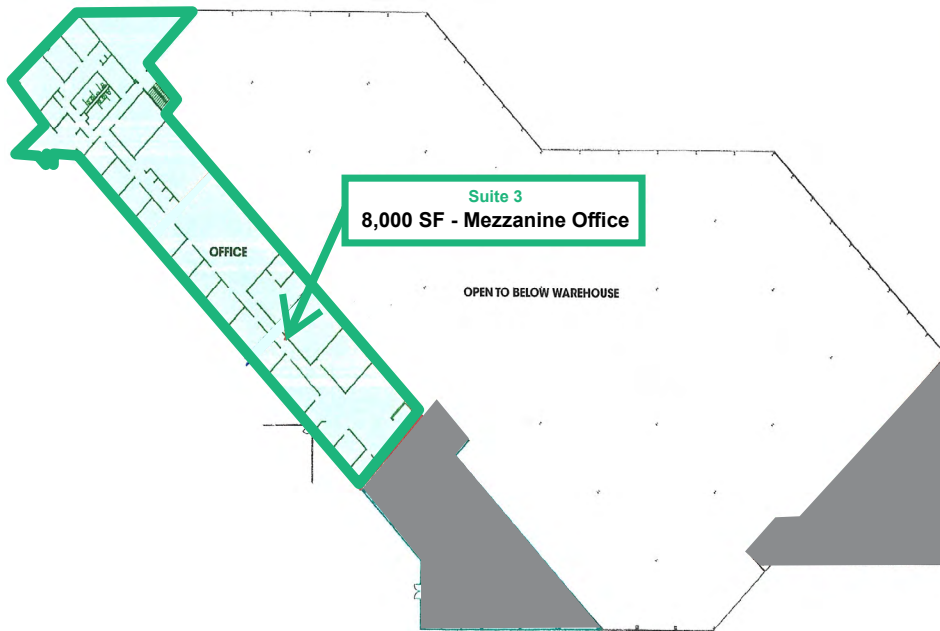
· Suites:

Suites 1 & 2	LEASED		
Suite 3	43,450 SF	8,000 SF Mezzanine office with Freight Elevator	4 docks

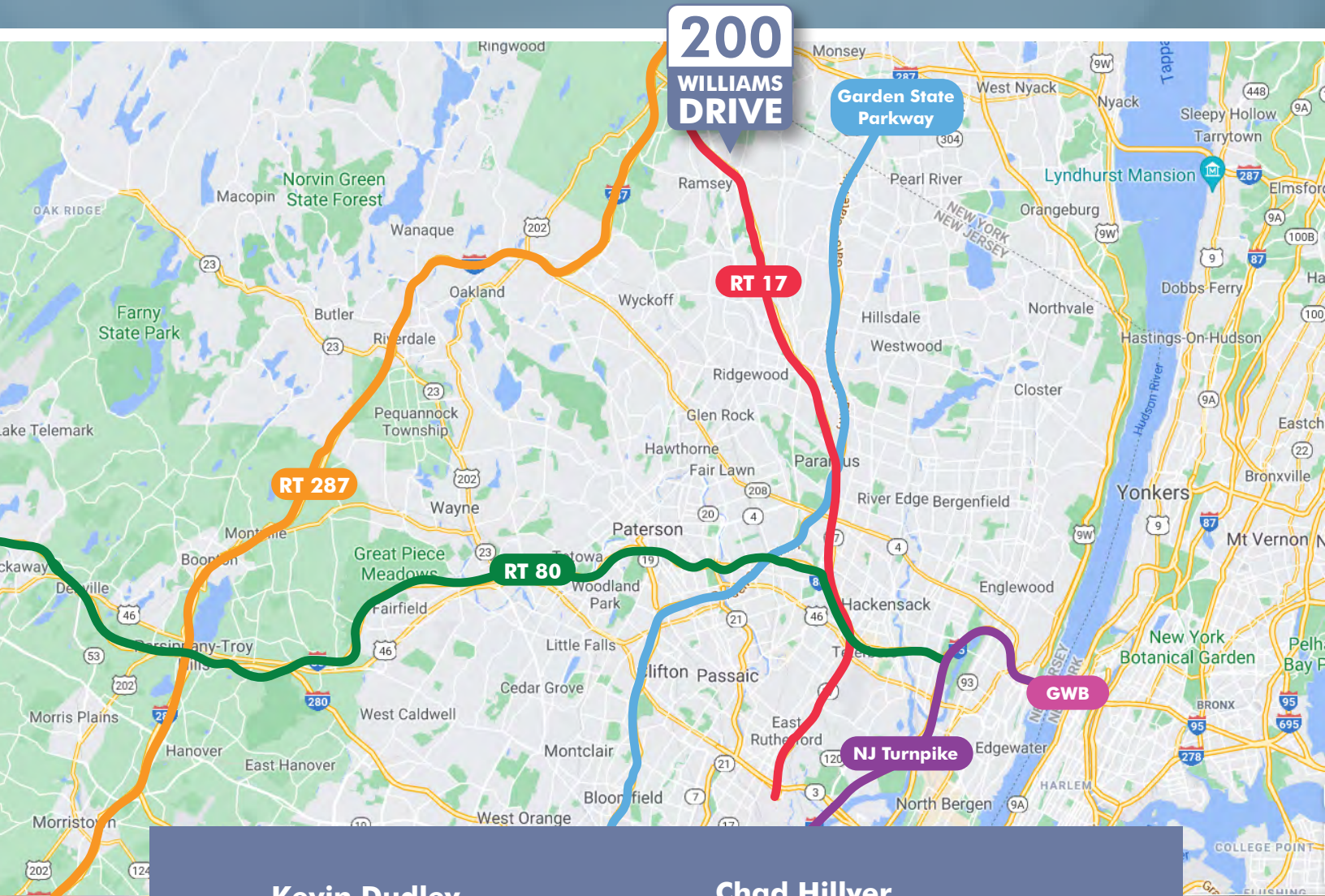
FLOOR PLAN - GROUND LEVEL



FLOOR PLAN - 2ND FLOOR



Easy Access to NJ-17, Route 287 and the Garden State Parkway



<p>Kevin Dudley Vice Chairman +1 201 712 5837 kevin.dudley@cbre.com</p>	<p>Chad Hillyer Executive Vice President +1 201 712 5655 chad.hillyer@cbre.com</p>
<p>Jeffrey C. Babikian Vice Chairman +1 201 712 5600 jeffrey.babikian@cbre.com</p>	<p>Nicholas Klacik Senior Vice President +1 201 712 5615 nicholas.klacik@cbre.com</p>



© 2024 CBRE, Inc. All rights reserved. This information has been obtained from sources believed reliable but has not been verified for accuracy or completeness. CBRE, Inc. makes no guarantee, representation or warranty and accepts no responsibility or liability as to the accuracy, completeness, or reliability of the information contained herein. You should conduct a careful, independent investigation of the property and verify all information. Any reliance on this information is solely at your own risk. CBRE and the CBRE logo are service marks of CBRE, Inc. All other marks displayed on this document are the property of their respective owners, and the use of such marks does not imply any affiliation with or endorsement of CBRE. Photos herein are the property of their respective owners. Use of these images without the express written consent of the owner is prohibited.