

FOR LEASE



Cedar Hills Office Park • 1815 SW Marlow

available | 2,096 RSF (+/-)

rate | \$24.00 RSF / Full Service

features |

- Two-story (elevator served)
- Portland mailing address in unincorporated Washington County

location |

- Quick access to Hwy 217 & Hwy 26
- Near footbridge to Sunset Light Rail Transit Center

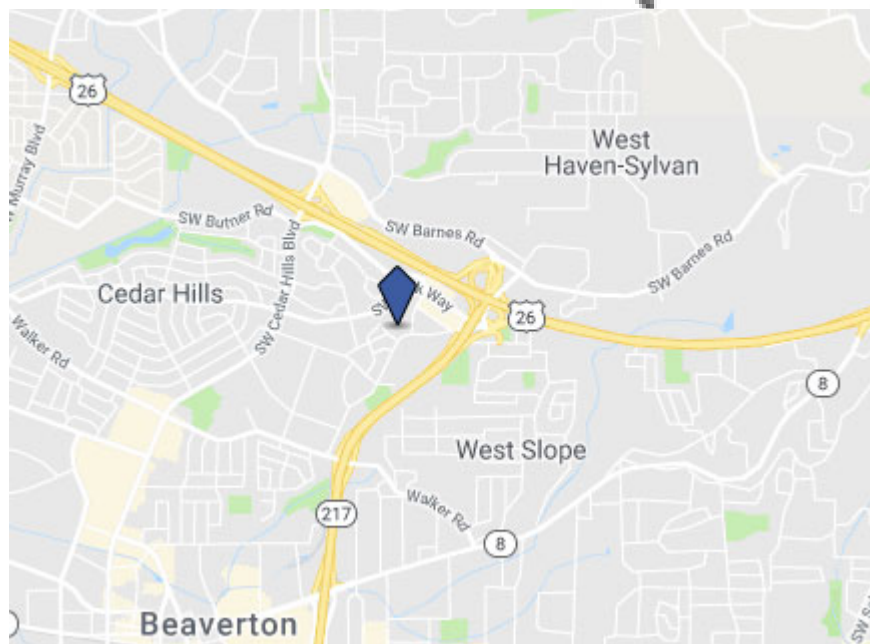
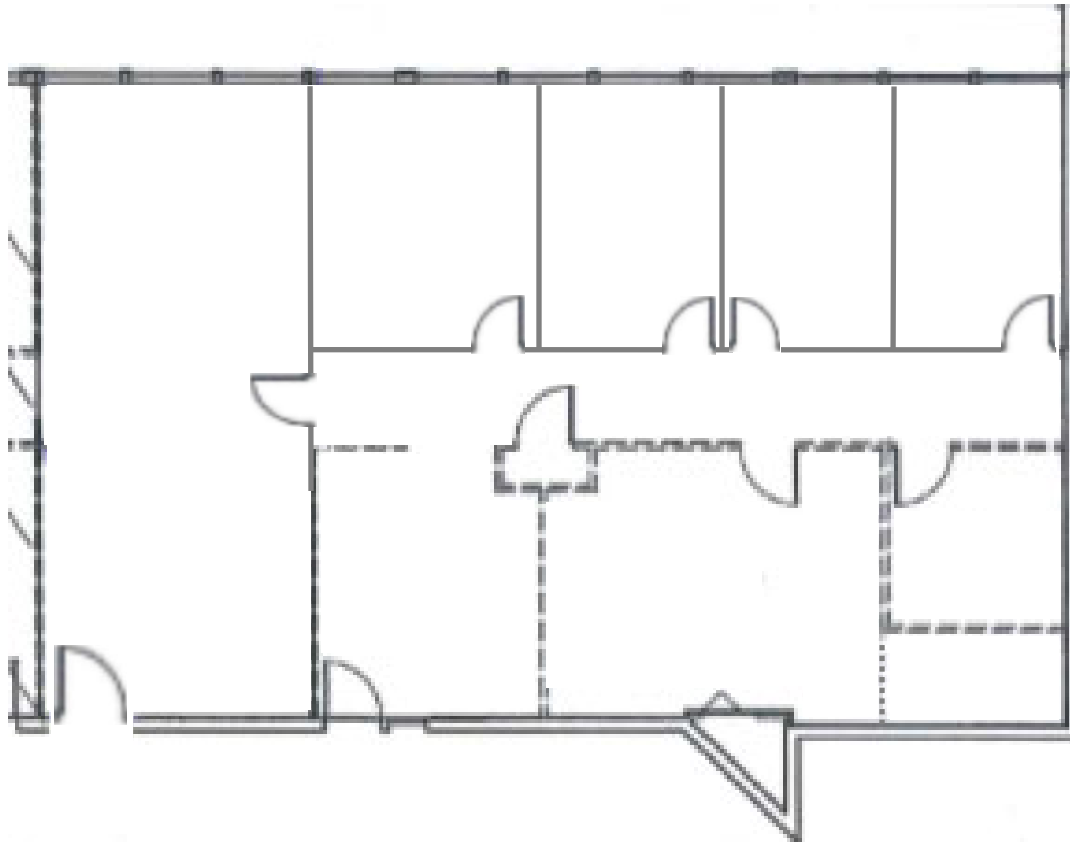


John Brandhorst
jbrandhorst@dougbean.com
503.222.5100

Adam Bean
adambean@dougbean.com

Information contained herein has been obtained from others and is considered to be reliable. However, a prospective purchaser or lessee is expected to verify all information to his own satisfaction.

Cedar Hills Office Park • 1815 SW Marlow



For Information, Please Contact:

John Brandhorst

jbrandhorst@dougbean.com

Adam Bean

adambean@dougbean.com

1200 NW Naito Parkway • Suite 220 • Portland, OR 97209
(503) 222-5100



Information contained herein has been obtained from others and is considered to be reliable. However, a prospective purchaser or lessee is expected to verify all information to their own satisfaction.

Cedar Hills Office Park • 1815 SW Marlow



For Information, Please Contact:

John Brandhorst

jbrandhorst@dougbean.com

Adam Bean

adambean@dougbean.com

1200 NW Naito Parkway • Suite 220 • Portland, OR 97209

(503) 222-5100

Information contained herein has been obtained from others and is considered to be reliable. However, a prospective purchaser or lessee is expected to verify all information to their own satisfaction.