

FOR LEASE

300 Park Street

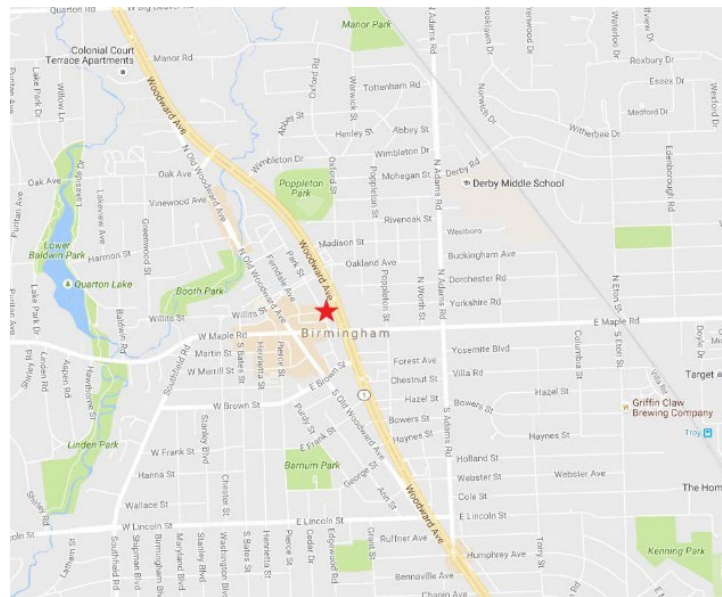
Birmingham, Michigan



Property Highlights

- Approximately 1,384 – 12,000 SF office space available
- One of Birmingham's most prestigious buildings located in the heart of downtown
- High visibility with possible Woodward Avenue signage rights
- Covered parking available in addition to municipal parking
- 57,244 total building square feet
- **Asking Rate:** \$31.50/SF Gross plus electric

Available	Total SF
Suite 230	1,496
Suite 285	1,394
Suite 370	4,147
Suite 380	2,445
Third Floor Combined	Approx. 12,000 SF contiguous
Suite 400	4,446



Garrett Keais
Managing Principal
+1 248 358 6112
garrett.keais@cushwake.com

Jarrold Champine
Senior Associate
+1 248 358 6111
jarrold.champine@cushwake.com

Mike Spisak
Associate
+1 248 358 6116
mike.spisak@cushwake.com

27777 Franklin Road, Suite 1050
Southfield, MI 48034
+1 248 358 6100
cushmanwakefield.com

FOR LEASE

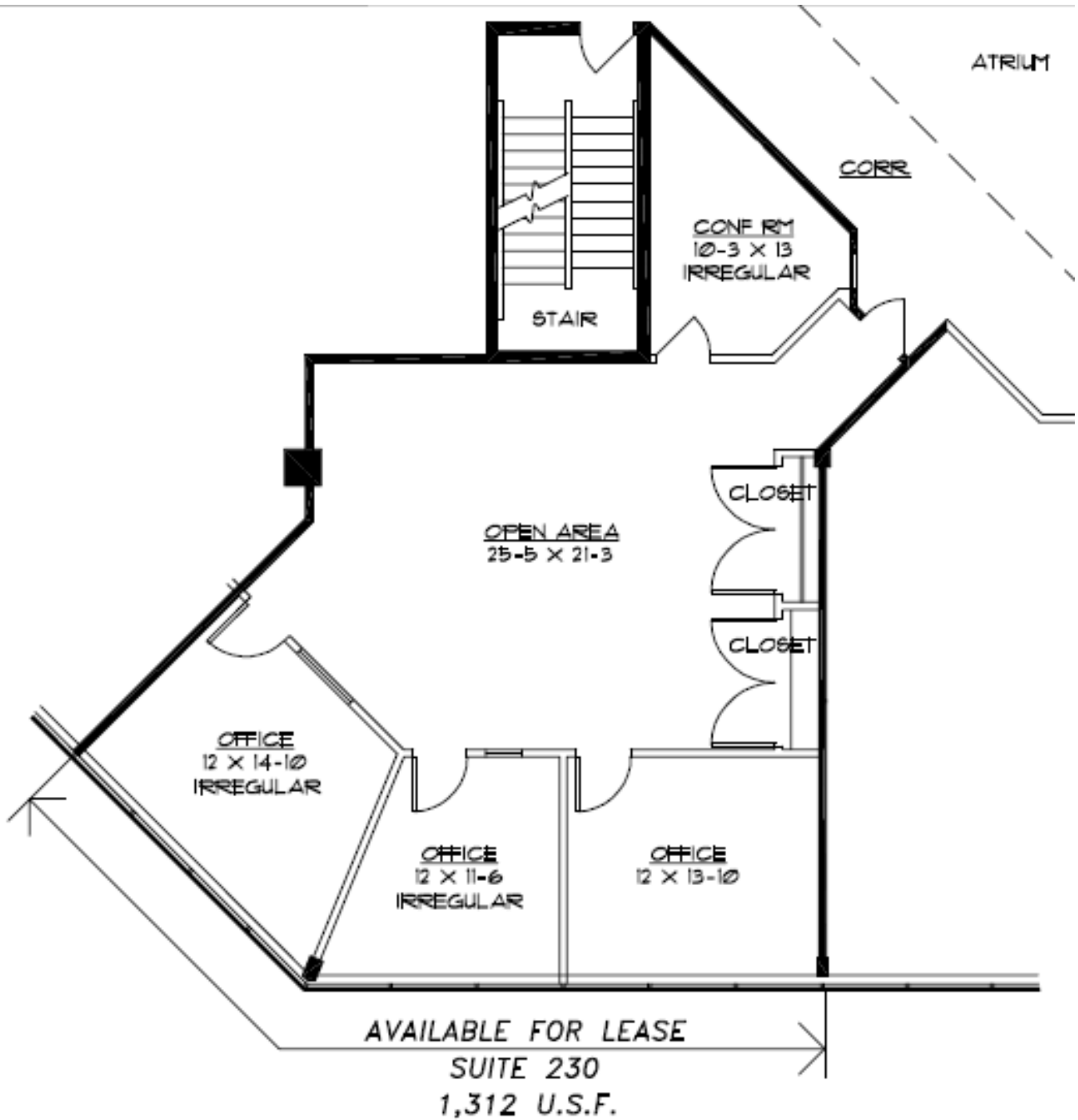
300 Park Street

Birmingham, Michigan



Suite 230

1,496 RSF



FOR LEASE

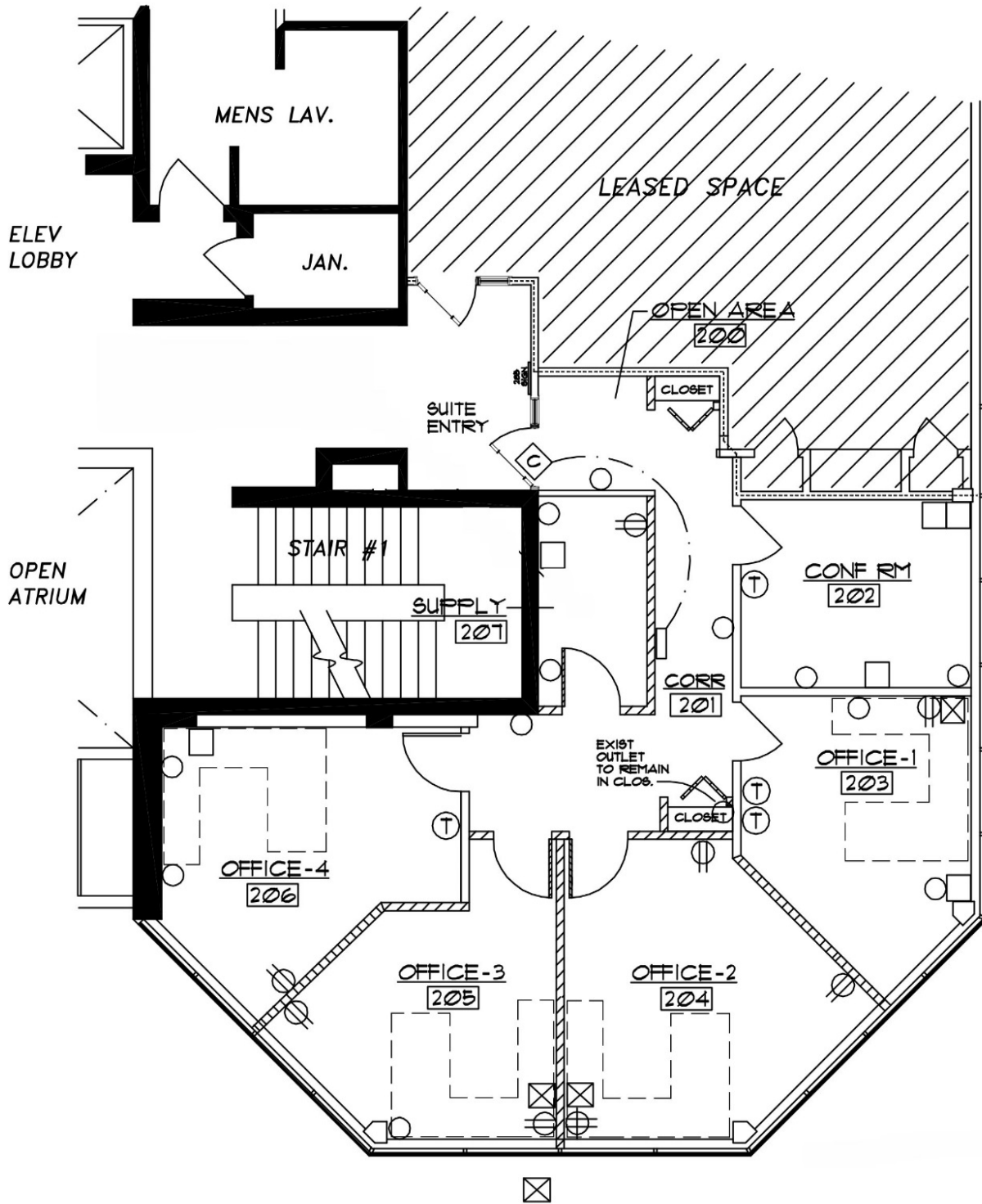
300 Park Street

Birmingham, Michigan



Suite 285

1,394 RSF



FOR LEASE

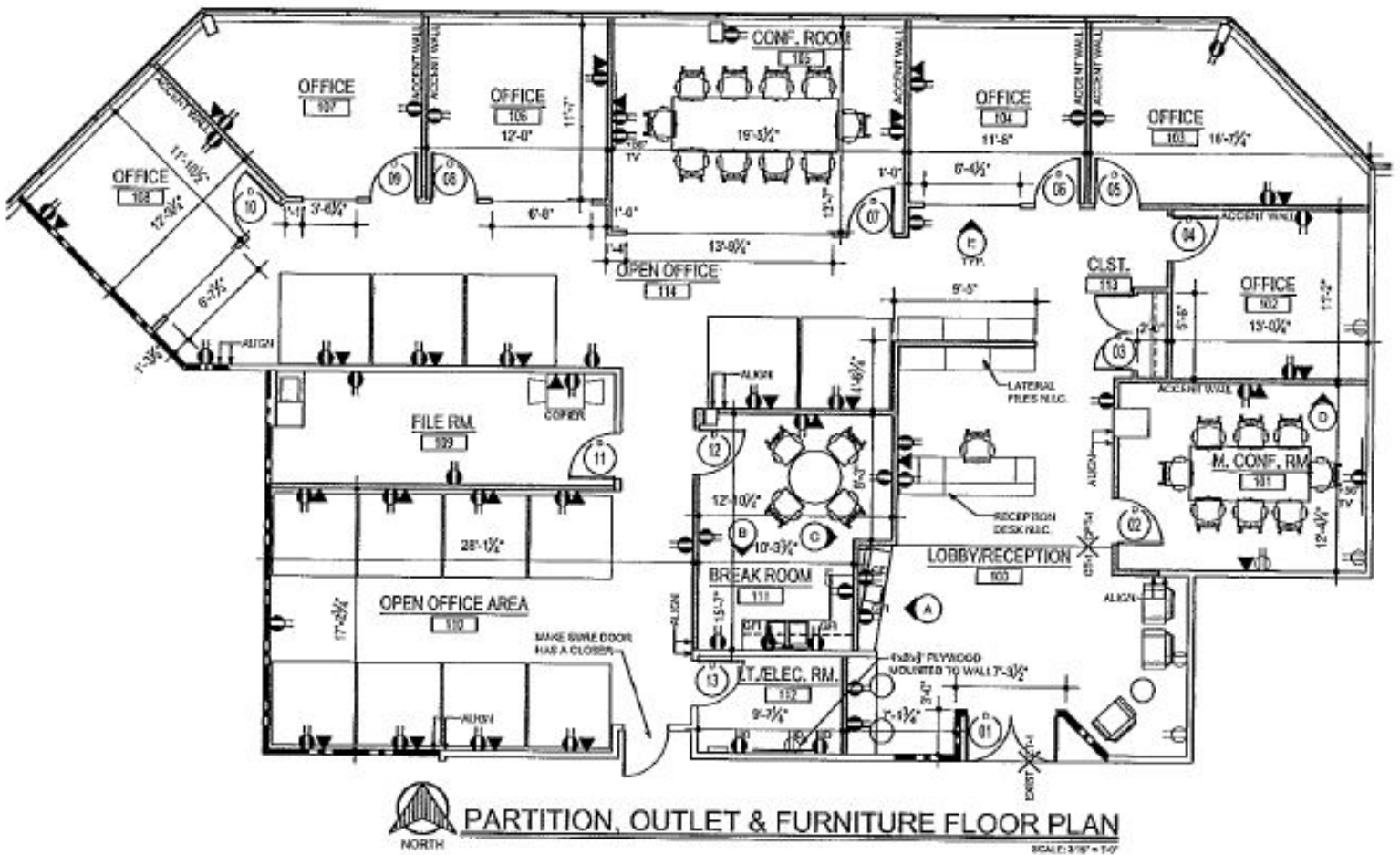
300 Park Street

Birmingham, Michigan



Suite 370

4,148 RSF



FOR LEASE

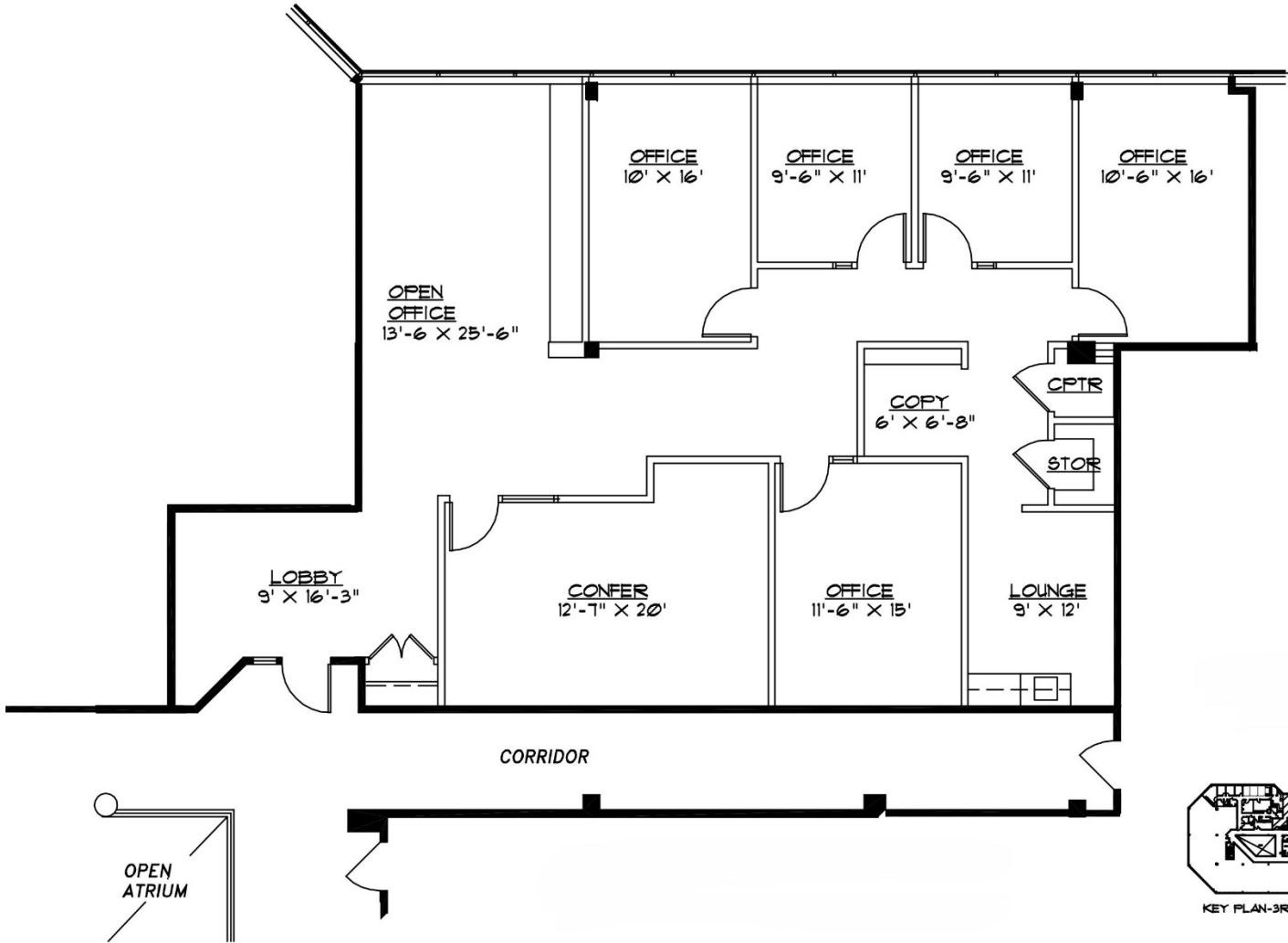
300 Park Street

Birmingham, Michigan



Suite 380

2,445 RSF



FOR LEASE

300 Park Street

Birmingham, Michigan



Third Floor

Up to approx. 12,000 SF

