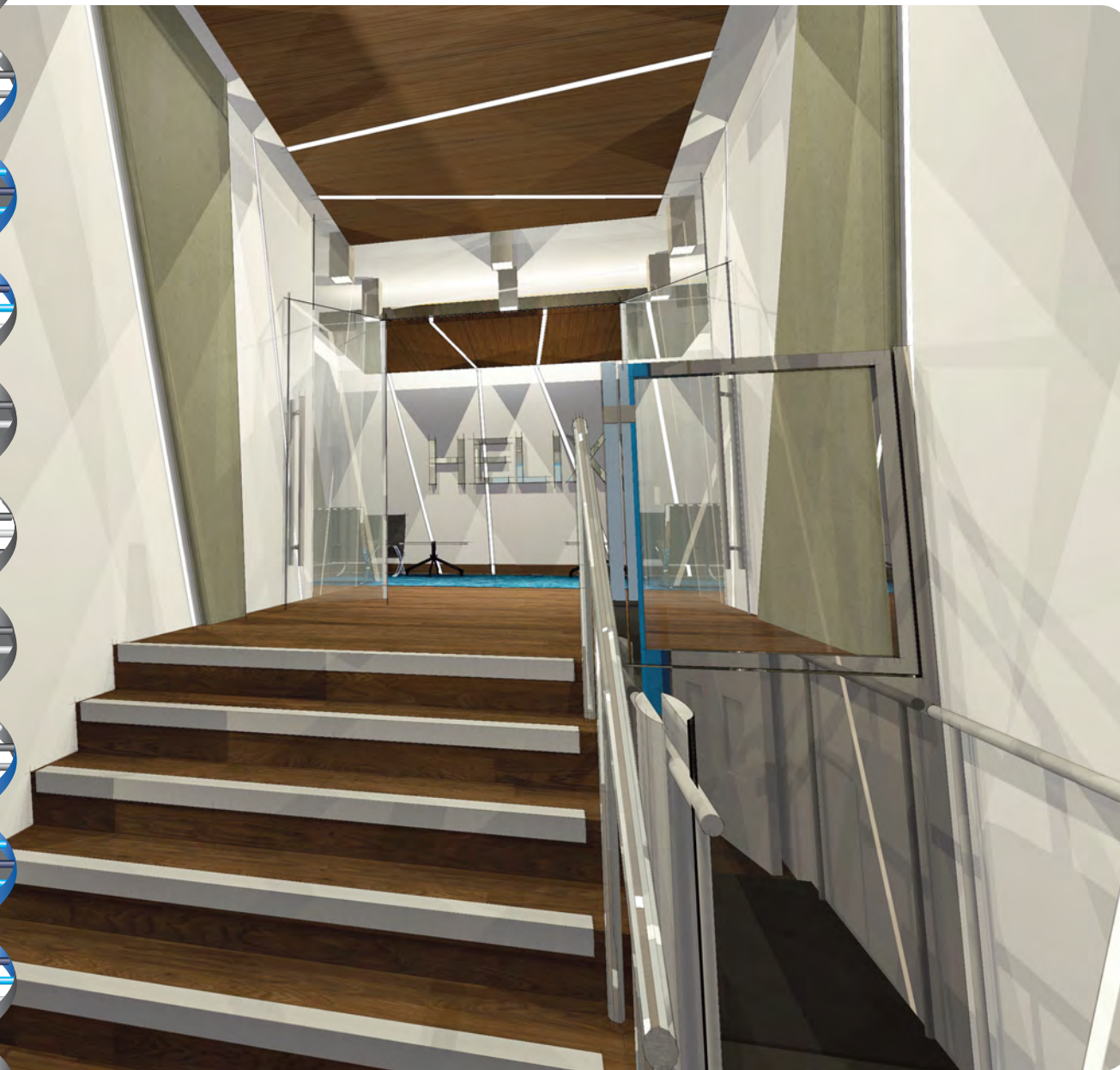


L3helix

Edmund Street, Liverpool

**STYLISH NEW
OFFICES TO LET**





TRADITIONAL AND MODERN

Helix is a 4 storey period office building, designed and built with an Art Deco influence. It has an extensive frontage to Old Hall Street, the impressive principal entrance faces Edmund Street.

Incorporated into the external facade is a sculpture by George Herbert Tyson Smith.

Born in Liverpool he was one of the regions best known architectural sculptors of the time. He attended Liverpool College of Art and was trained in drawing by the renowned artist, Augustus John.

Helix is currently undergoing major remodelling with a scheme / brand that will enhance it's stylish period qualities whilst incorporating contemporary visual and architectural twists. Upgraded technology and energy efficient credentials, mean that it will compete with all that new buildings have to offer.

The reception and common areas will be spacious well illuminated, with comfortable waiting zones and a welcoming ambiance.

Accommodation can range from entire floors to small office suites.

There are a number of 'added value' facilities within the building including:

- Kitchen / break out areas
- Meeting rooms with WiFi
- Additional meeting spaces
- Roof top garden
- Cycle storage
- Showers

All designed to fulfil the expectations of todays office occupiers.



ACCOMMODATION

Floors	Sq ft	Sq m
Ground A	370	34.3
Ground B	1,374	127.6
First A	3,403	316.1
First B	2,551	236.9
Second A	3,315	307.9
Second B	LET	-
Third	LET	-
Total	11,130	1033.9



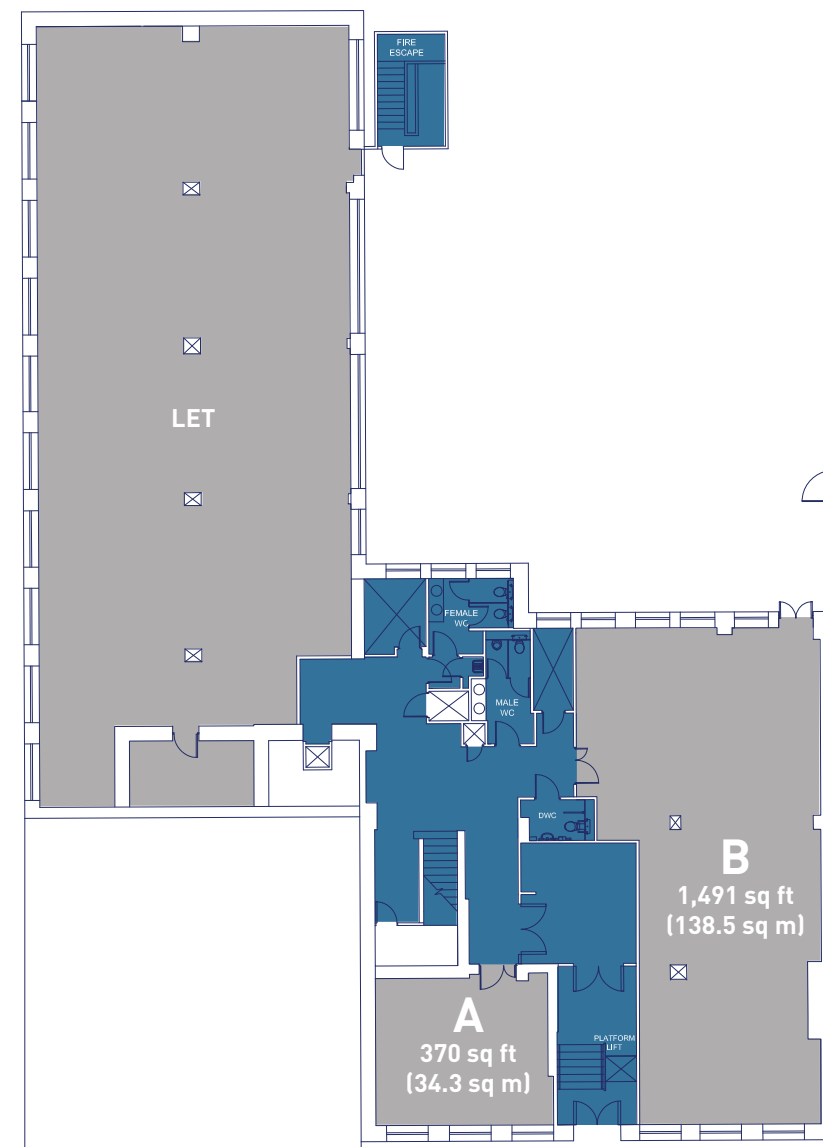
GROUND FLOOR →

Go to FIRST FLOOR →

Go to SECOND FLOOR →

Go to THIRD FLOOR →

GROUND FLOOR PLAN



home



description



accommodation



gallery



location



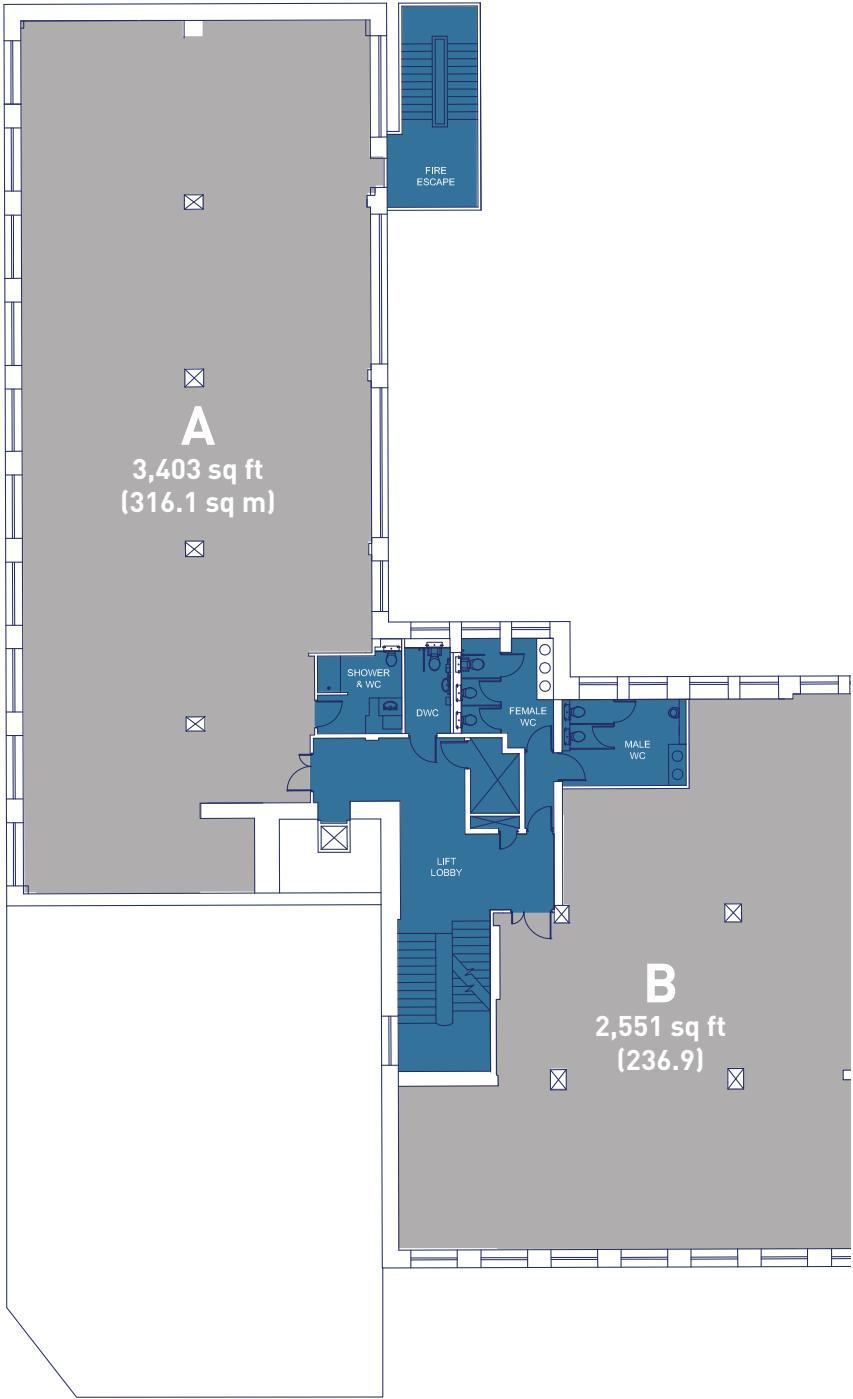
amenities



contact

FIRST FLOOR PLAN

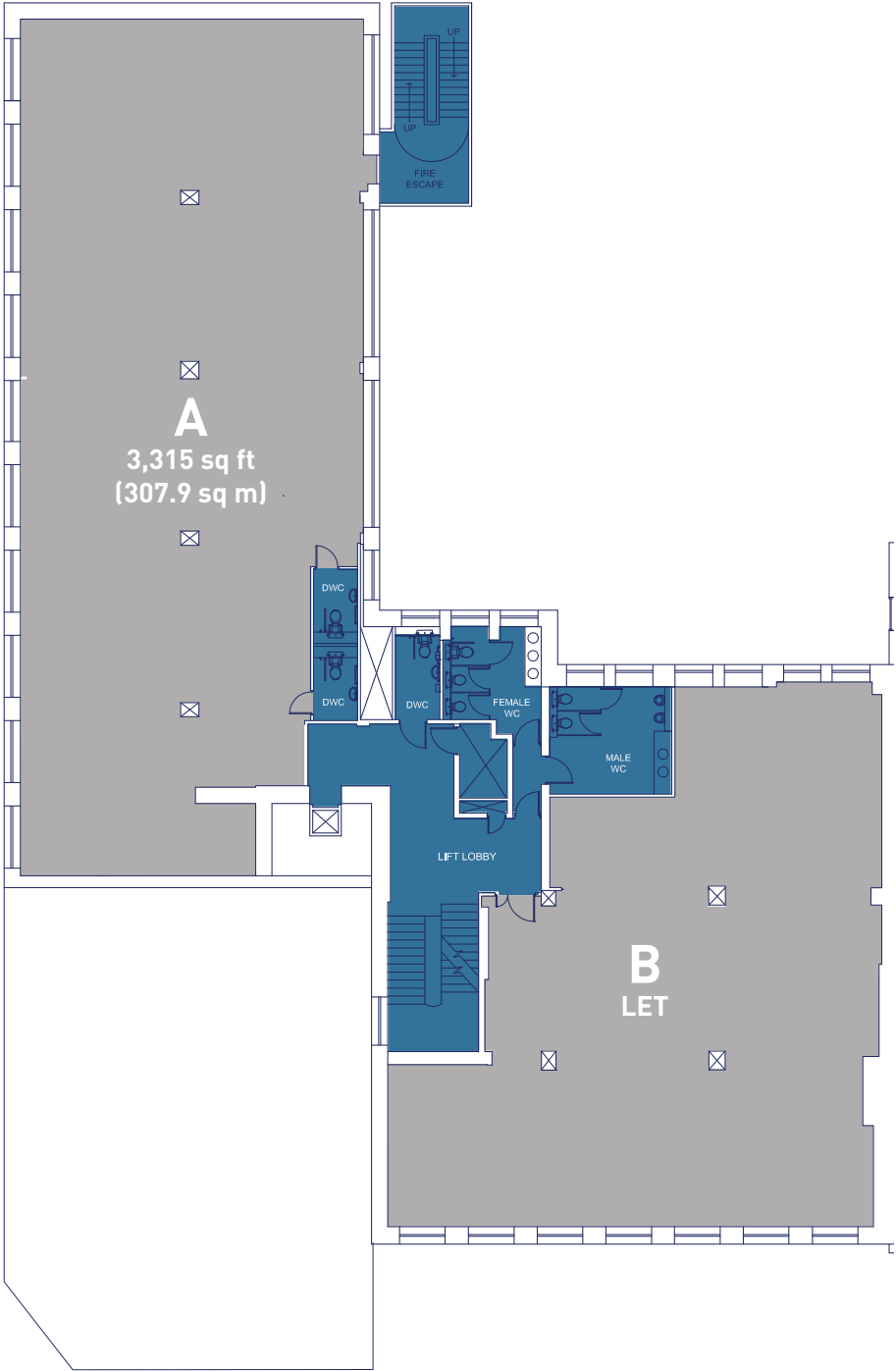
Floors	Sq ft	Sq m
First A	3,403	316.1
First B	2,551	236.9



[click to
return
to Ground
Floor](#)

SECOND FLOOR PLAN

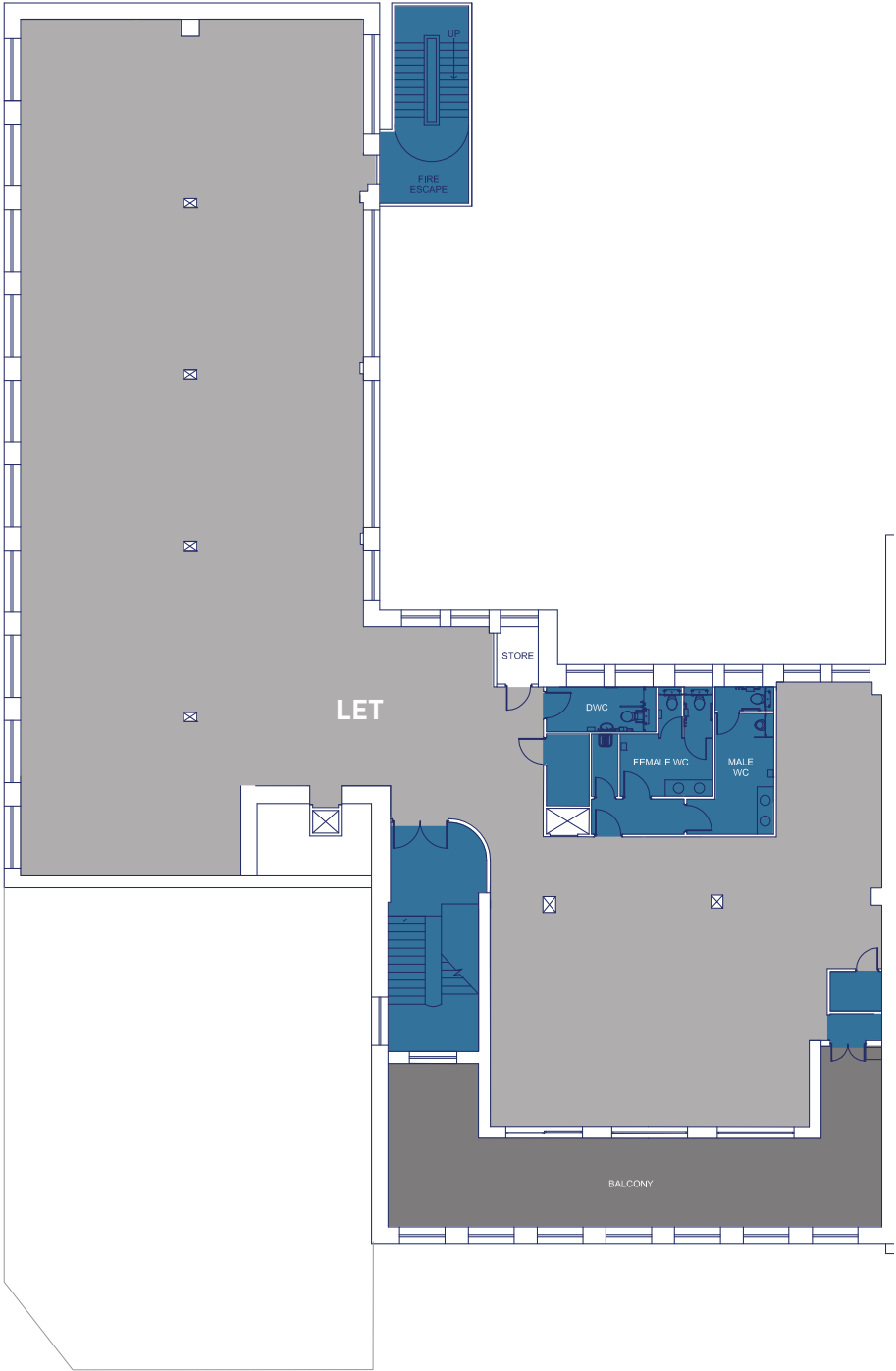
Floors	Sq ft	Sq m
Second A	3,315	307.9
Second B	LET	-



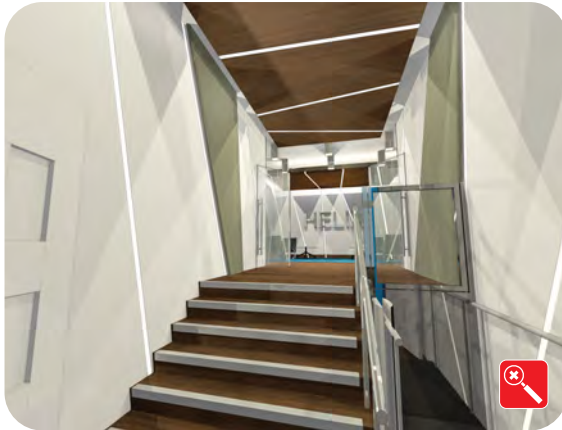
[click to
return
to Ground
Floor](#)

THIRD FLOOR PLAN

Floors	Sq ft	Sq m
Third	LET	-



[click to
return
to Ground
Floor](#)



home



description



accommodation



gallery



location



amenities

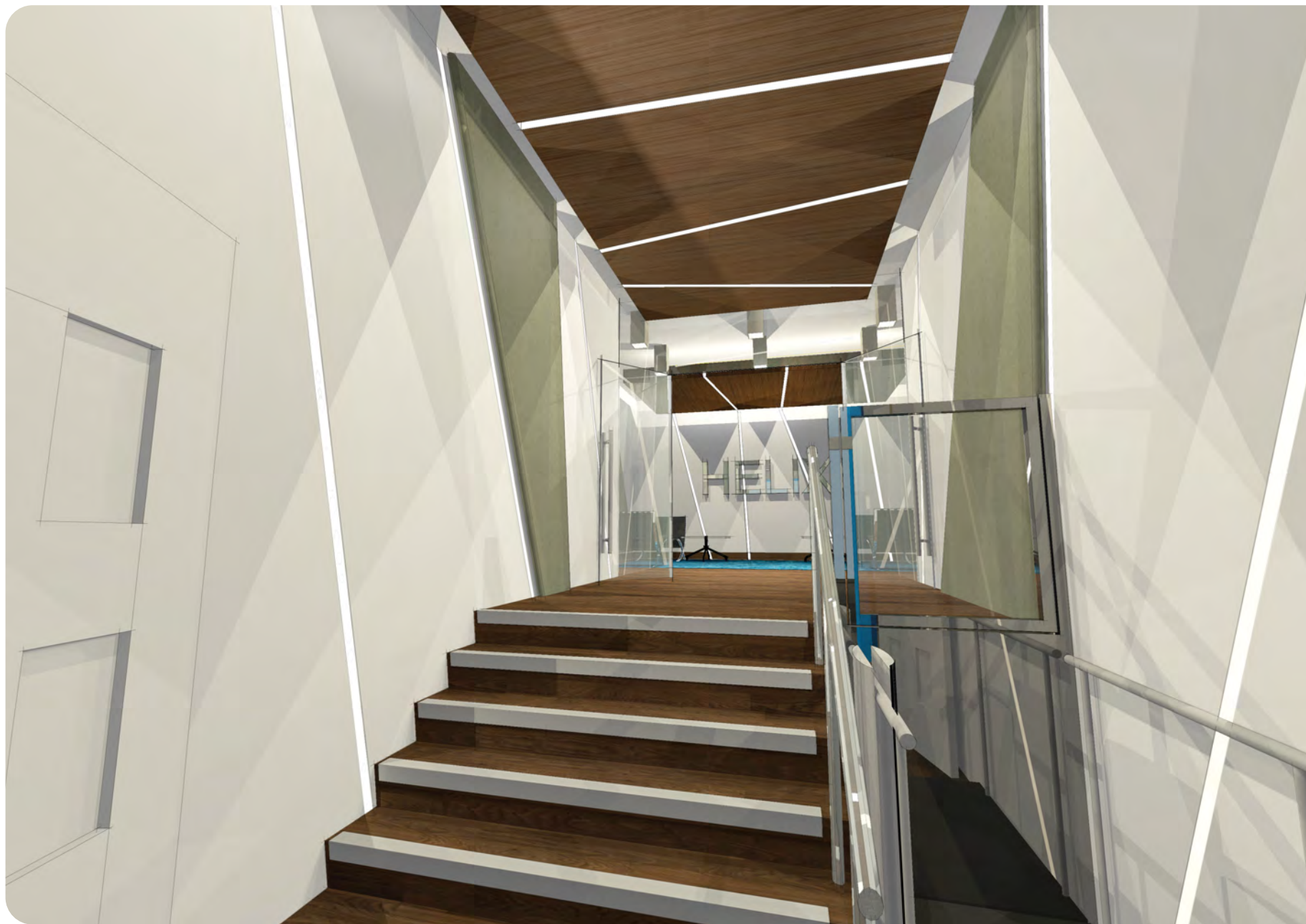


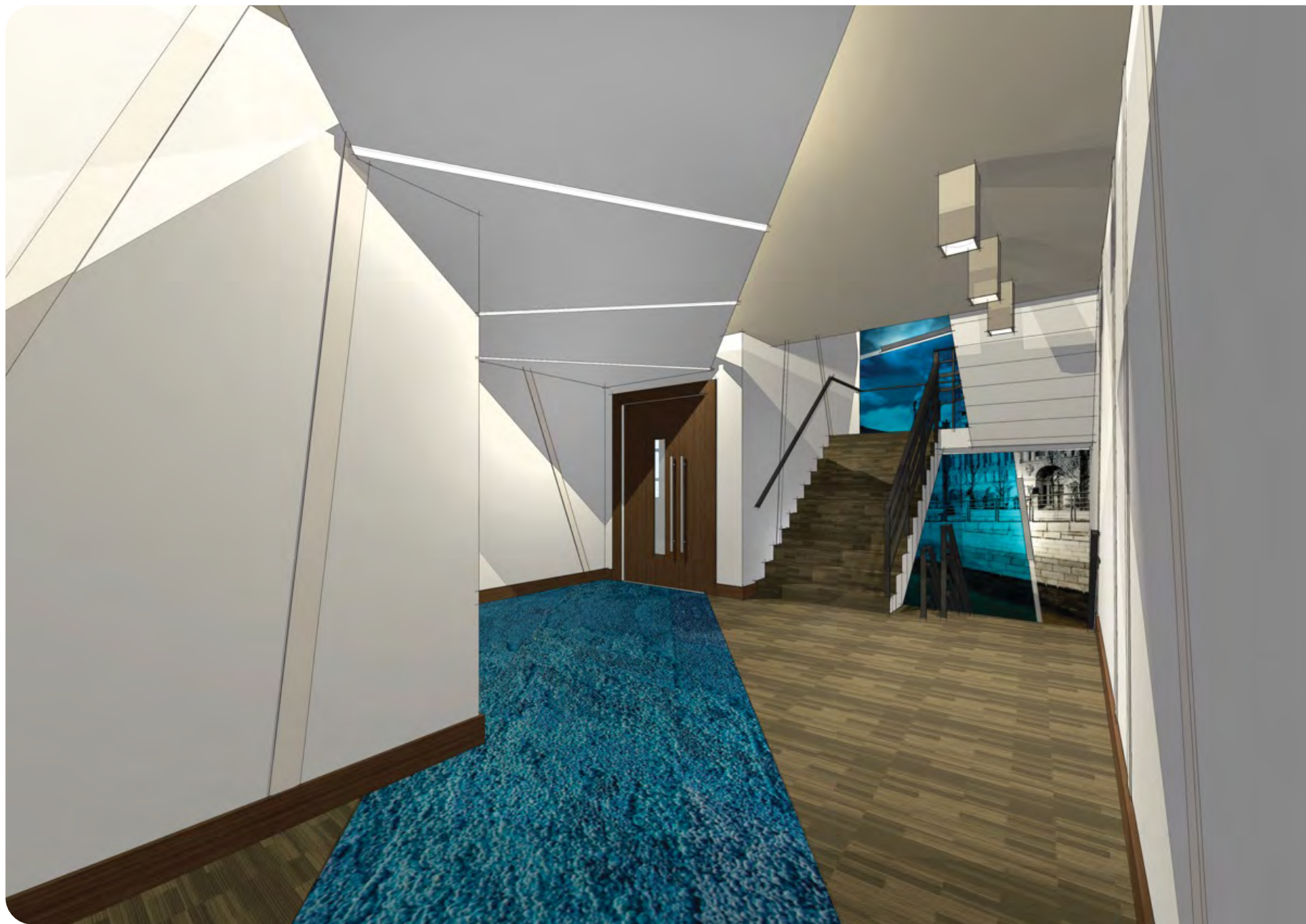
contact



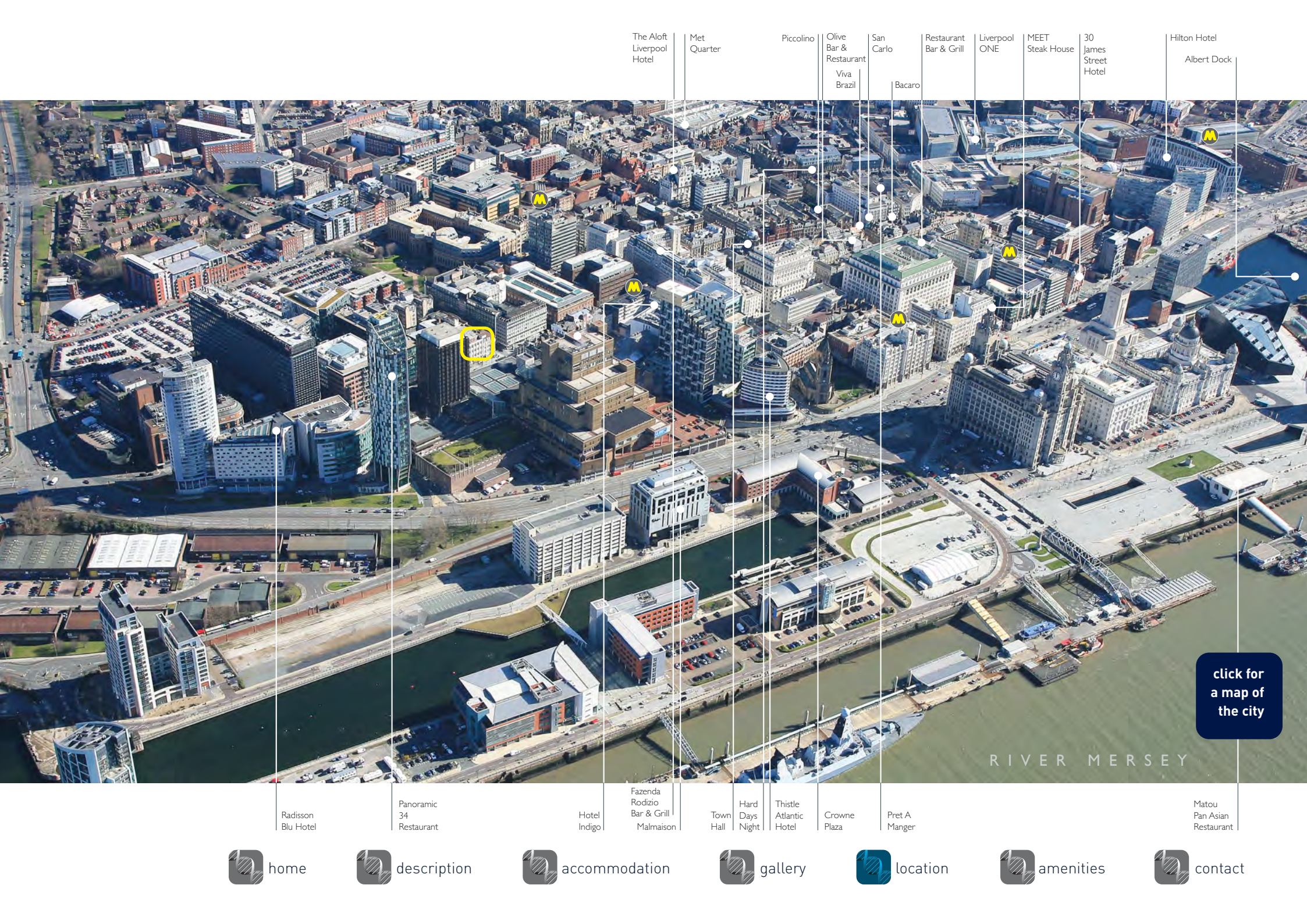












The Aloft
Liverpool
Hotel

Met
Quarter

Piccolino

Olive
Bar &
Restaurant
Viva
Brazil

San
Carlo

Bacaro

Restaurant
Bar & Grill

Liverpool
ONE

MEET
Steak House

30
James
Street
Hotel

Hilton Hotel
Albert Dock

Radisson
Blu Hotel

Panoramic
34
Restaurant

Hotel
Indigo

Fazenda
Rodizio
Bar & Grill
Malmaison

Town
Hall

Hard
Days
Night

Thistle
Atlantic
Hotel

Crowne
Plaza

Pret A
Manger

Matou
Pan Asian
Restaurant

RIVER MERSEY

click for
a map of
the city



home



description



accommodation



gallery



location



amenities



contact



EXCELLENT ACCESS

Helix is centrally located in the City's business hub, close to the main inner ring road and Tithebarn Street which offers excellent road access to the M62, M58, and the national motorway network. The Kingsway and Queensway Mersey Tunnel entrances are both within a few minutes drive.

Merseytravel operates extensive regular bus services from Liverpool ONE bus station to all parts of the Merseyside region.

Moorfields station is about 300 meters away and provides regular commuter services on the Mersey Rail network to the surrounding districts and the Wirral, as well as connections to Lime Street mainline station.

Liverpool John Lennon Airport is 20 minutes to the South of the City and Manchester Airport is a further 25 minutes drive.

Mersey Ferries operate a regular passenger service across the Mersey. P&O and Stenna operate daily sailings to the Isle of Man, Belfast and Dublin.



[click to
return
to aerial](#)



OUT AND ABOUT

Helix sits conveniently in the heart of both the established and new business districts.

The immediate area has an extensive and diverse mix of bars, cafes and restaurants. Quality hotels open spaces and the world famous Liverpool Waterfront are within a few minutes walk.

High profile designer brands can be found in Liverpool ONE, the Met Quarter, Cavern Walks and the traditional retail areas of Lord Street and Church Street which are in close proximity.





L3helix

Edmund Street, Liverpool

MISREPRESENTATION ACT

Hitchcock Wright & Partners and CBRE for themselves and the vendors or lessors of this property whose agents they are give notice that (1) The particulars do not constitute any part of an offer or contract, (2) All statements contained in these particulars as to this property are made without responsibility on the parts of Hitchcock Wright & Partners, CBRE or vendors or lessors, (3) All descriptions, dimensions and other particulars are given in good faith and are believed to be correct, but any intending purchaser or tenant should not rely on them as statements or representations of fact and must satisfy themselves by way of investigation or otherwise as to the correctness of each of them, (4) No person in the employment of Hitchcock Wright & Partners or CBRE has any authority to make or give any representation or warranty whatsoever in relation to this property, (5) Unless otherwise stated prices and rents are quoted exclusive of VAT.
August 2015 Design: Alphabet Design 0151 707 1199 www.alphabet-design.co.uk



Andrew.Byrne@cbre.com



brian.ricketts@hwandp.co.uk
www.hitchcockwright.co.uk

