



Chartex Commercial Property Agents

- Chartex Commercial Property Agents
- 01773 599990
- [hugh@chartex.co.uk](mailto:hugh@chartex.co.uk)

## **Ben Arran House, Wigwam Lane, Hucknall: Offices to Let**

Ben Arran House, Wigwam Lane, Hucknall, NG15 7SZ

**THIS PROPERTY IS CURRENTLY AVAILABLE**  
WEB REFERENCE: PROP2231

- [£1,250/month](#)
- 
- 
- 

144 sq metres  
 0 Room  
 0 Bed

0 Bath

[Contact Agent](#)

### Gallery



Two large modern offices suites available to let in Hucknall, just off the industrial park on Wigwam Lane.

Suite 4 is a large open plan office, 12.068m by 12.130m.

Suite 3 is a large open plan office, 12.236m by 12.186 with windows to three sides.

Suite 4 is available for £15,000 per annum. Suite 3 is available for £15,000 per annum.

Rateable Value for each suite is £13,250.

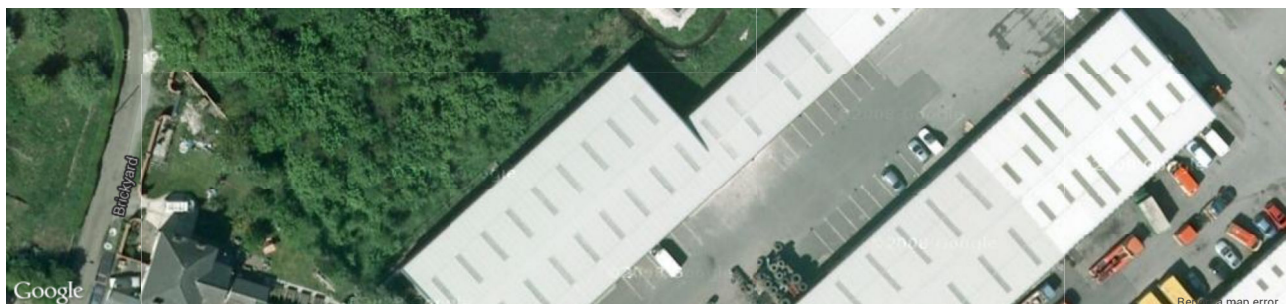
There are communal loos and kitchens just off the main stairwell.

Viewing highly recommended.

### Features

- 

### Property Map



## More properties in this area



Chartex are a firm of Chartered Surveyors specialising in commercial property consultancy offering a combination of national contacts and excellent local knowledge in and around Derbyshire and Nottinghamshire.

With a modern approach to property, we focus on office, retail and industrial property. Chartex are well placed to help find or market your property. Our services include Homebuyers Reports, Surveys & Valuations, Rent Reviews, Acquisitions, EPCs, Schedules of Dilapidations and Property Management.

### Contact Chartex

If you have any questions or would like to arrange a viewing please [contact us today](#).



### Contact Us

**Address:** Broadholme House Farm, Broadholme Lane, Belper, Derbyshire, DE56 2JG

**Tel:** (01773) 599990

**Email:** [hugh@chartex.co.uk](mailto:hugh@chartex.co.uk)

[Privacy Policy](#) - [Terms](#) - [Cookies](#)

© 2013 Chartex. All Rights Reserved.