



840 E LEWISTON ST. FERNDALE, MI 48220

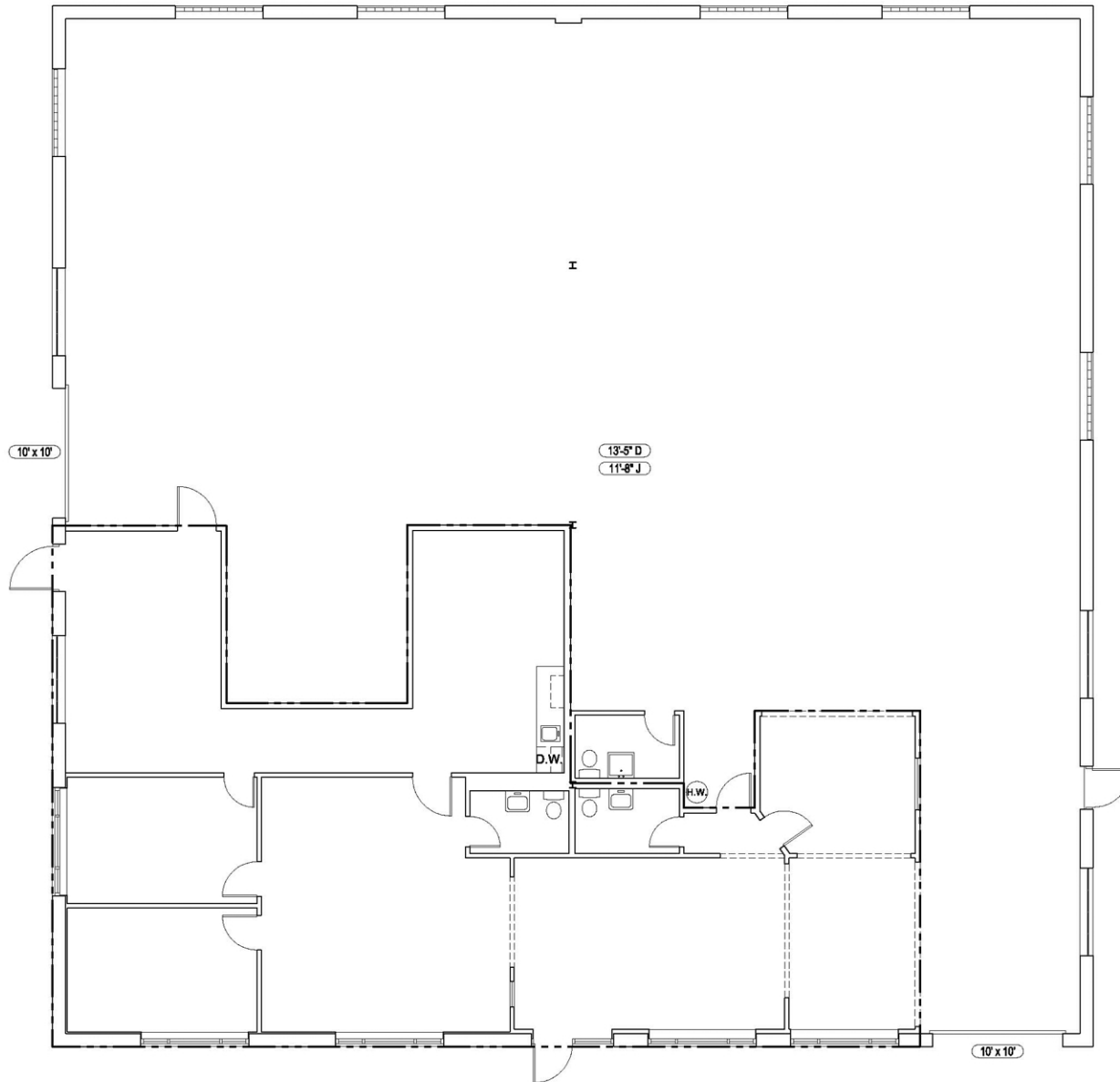
INDUSTRIAL/FLEX SPACE FOR SALE/LEASE

- Industrial/Flex Building
- Sale: \$802,500
- Lease Rate: \$TBD
- 6,420 SF
- Office: 2,019 SF
- 0.36 Acres
- Zoning: M-1 (Limited Industrial District)
- Renovated in 2017
- New exterior paint
- Heat and AC throughout
- Ceiling beams for overhead crane
- Newer mechanical systems throughout
- Roof maintained and in good condition
- 10+ onsite parking spaces
- Additional street parking
- Two 10 x 10 overhead doors
- 12' ceiling heights
- 2021 Taxes Winter: \$162.95
- Summer: \$6,562.20

- **Population**
1 Mile: 15,721
3 Mile: 139,629
5 Mile: 376,763
- **Business**
#of Businesses: 880
of Employees: 7,433
- **Household**
1 Mile: 7,597
3 Mile: 60,116
5 Mile: 156,034
- **Average Household Income**
1 Mile: \$86,149
3 Mile: \$79,976
5 Mile: \$70,494
- **Traffic Count**
Hilton Road: 10,763

Kevin Tamer
Vice President
Office: 248-710-8000
Cell: 734-624-3729
knt@team-core.com

Samuel McLean
Vice President
Office: 248-710-8000
Cell: 248-935-7237
sam@team-core.com



DO NOT SCALE



840 E Lewiston St.
Ferndale, MI 48220

6,420 SF
For More Information Please Call:
248.710.8000

