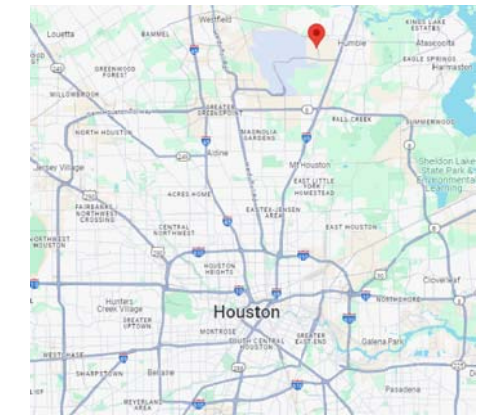
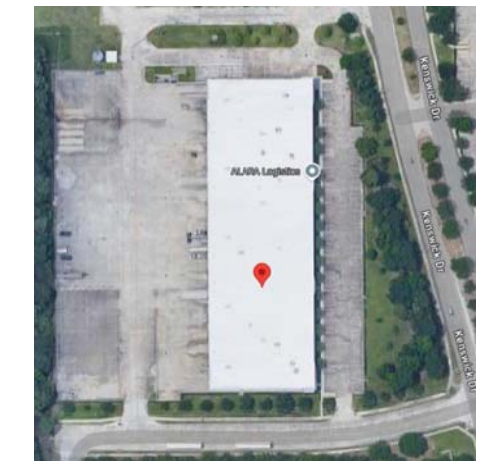


19245 KENSWICK DR. #100  
HOUSTON, TEXAS 77338



LOCATION MAP



SITE PLAN

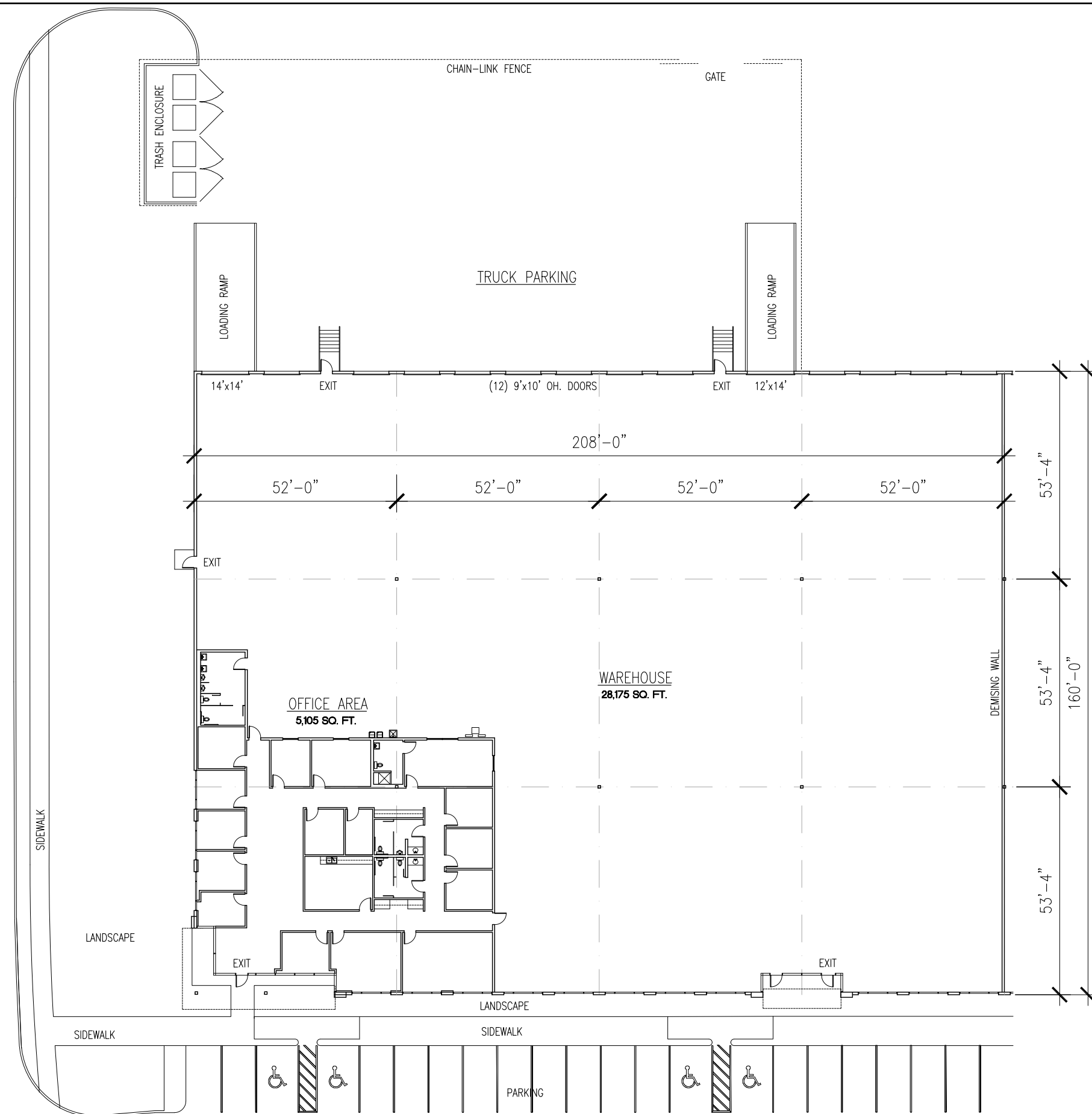
**BUILDING SUMMARY**

OFFICE AREA:	5,105 SQ. FT.
WAREHOUSE:	28,175 SQ. FT.
<b>TOTAL</b>	<b>33,280 SQ. FT.</b>

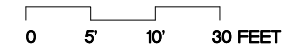
**BUILDING FEATURES**

- MASTER PLANNED INDUSTRIAL PARK
- EASY ACCESS TO MAJOR THOROUGHFARES
- ESFR FIRE SPRINKLER SYSTEM
- (14) DOCK HIGH REAR LOADING DOORS
- 24' CLEAR HEIGHT WITH SKYLIGHTS
- SECURITY LIGHTING AND FENCED TRUCK COURT
- ALL CONCRETE PAVING

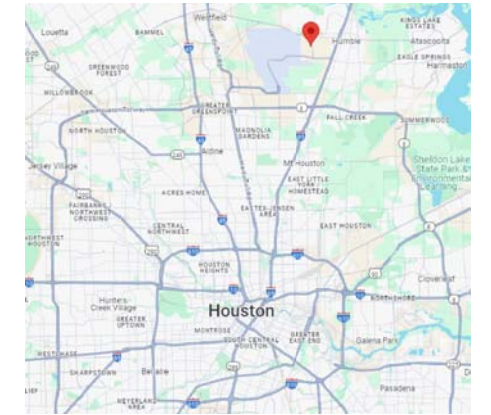
WAREHOUSE CENTER DR.



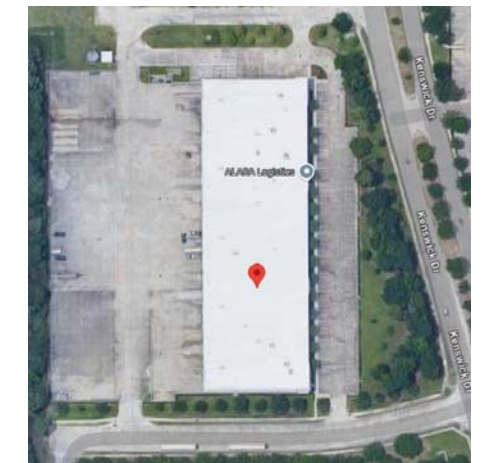
SUITE 100 FLOOR PLAN



19245 KENSWICK DR. #100  
HOUSTON, TEXAS 77338



LOCATION MAP



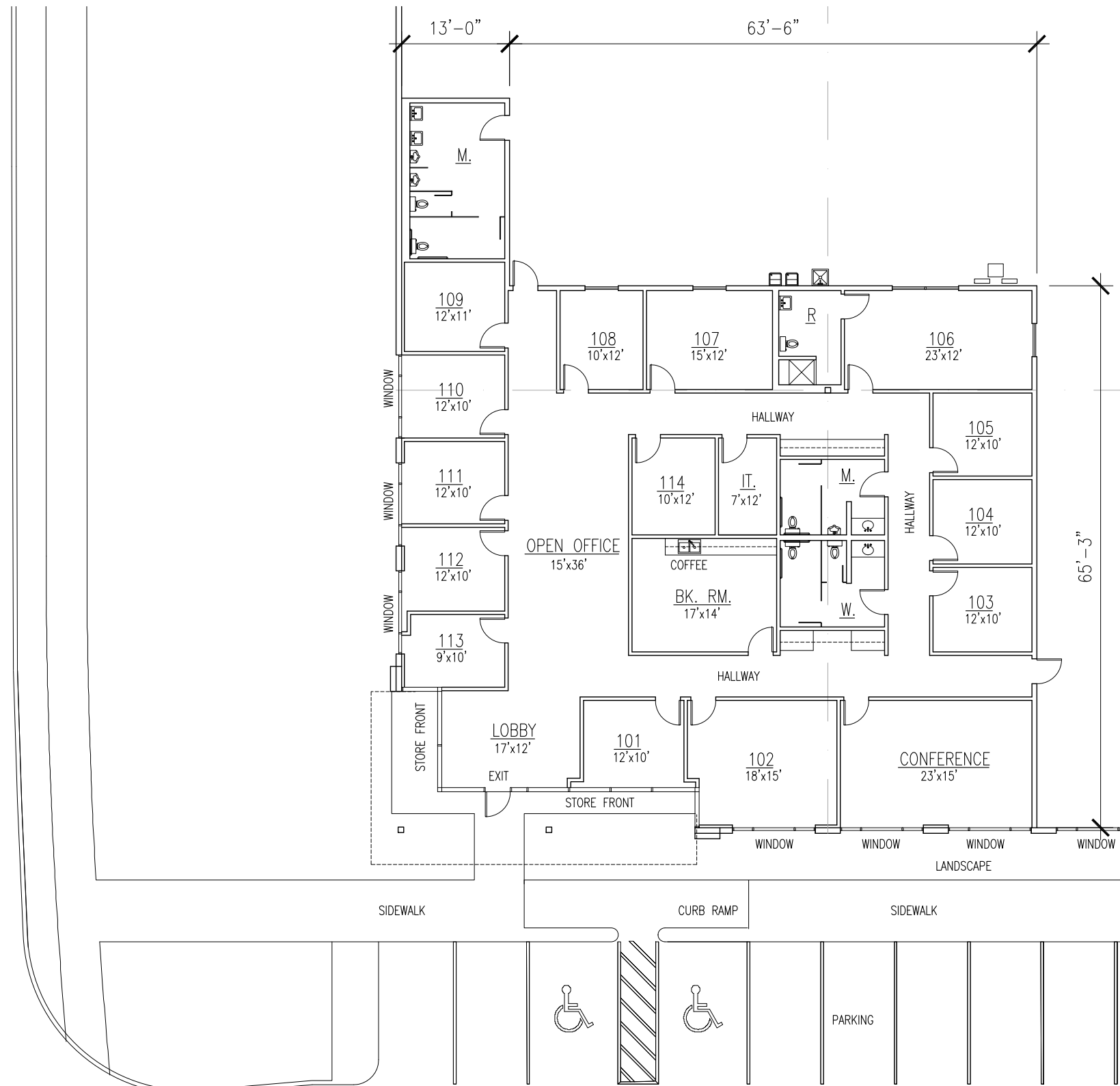
SITE PLAN

**BUILDING SUMMARY**

OFFICE AREA:	5,105 SQ. FT.
WAREHOUSE:	28,175 SQ. FT.
<b>TOTAL</b>	<b>33,280 SQ. FT.</b>

**BUILDING FEATURES**

- MASTER PLANED INDUSTRIAL PARK
- EASY ACCESS TO MAJOR THOROUGHFARES
- ESFR FIRE SPRINKLER SYSTEM
- (14) DOCK HIGH REAR LOADING DOORS
- 24' CLEAR HEIGHT WITH SKYLIGHTS
- SECURITY LIGHTING AND FENCED TRUCK COURT
- ALL CONCRETE PAVING



SUITE 100 OFFICE FLOOR PLAN

