



LLOYD
COMPANIES

SILVER MAPLE OFFICE BUILDING

GARDEN LEVEL SPACE AVAILABLE



6201 E Silver Maple
Sioux Falls, SD 57110

FOR LEASE

\$12.00/SF NNN

SIZE

- Suite 100: 1,379 SF +/-
- Suite 200: 1,635 SF +/-
- Suites may be combined for entire garden level suite

PRICE

- \$12.00/SF NNN

LOCATION

- Located on the expanding East Side at the Copper Creek Development near the signalized intersection of S. Powder House Road (SD Hwy 11) and E. 26th Street.

DESCRIPTION

- Garden level available
- Design a floor plan and interior finishes to meet your needs
- Co-tenants include Auten Accounting and Tallgrass Wealth Management
- Monument sign available
- Contact Broker for additional information.

Find out more at lloydcompanies.com

RAQUEL BLOUNT, SIOR
605 728-9092
raquel@lloydcompanies.com

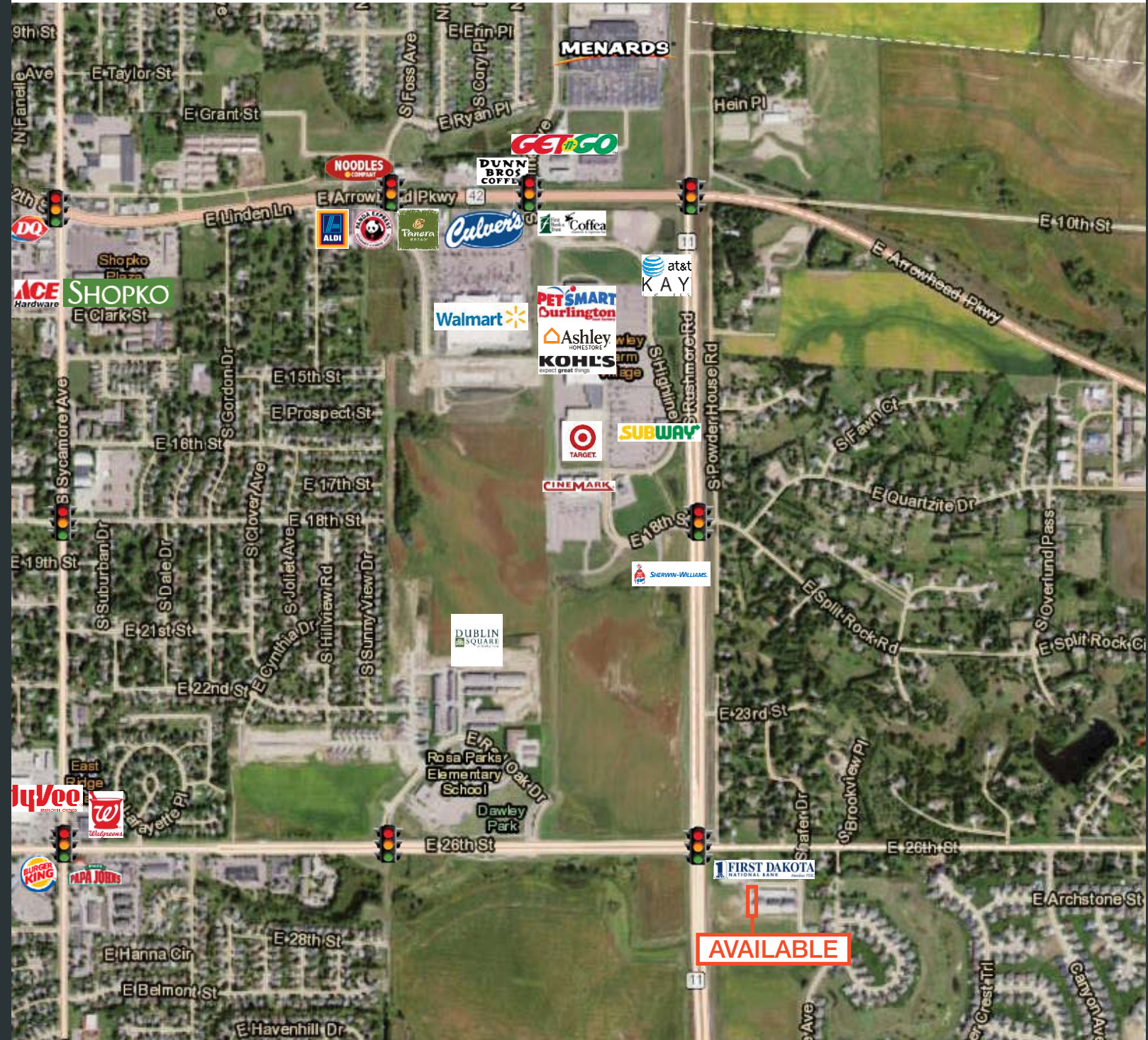
101 S. Reid Street | Ste. 201 | Sioux Falls, SD 57103
Information deemed reliable, but not guaranteed.



LLOYD
COMPANIES

SILVER MAPLE OFFICE BUILDING

GARDEN LEVEL SPACE AVAILABLE



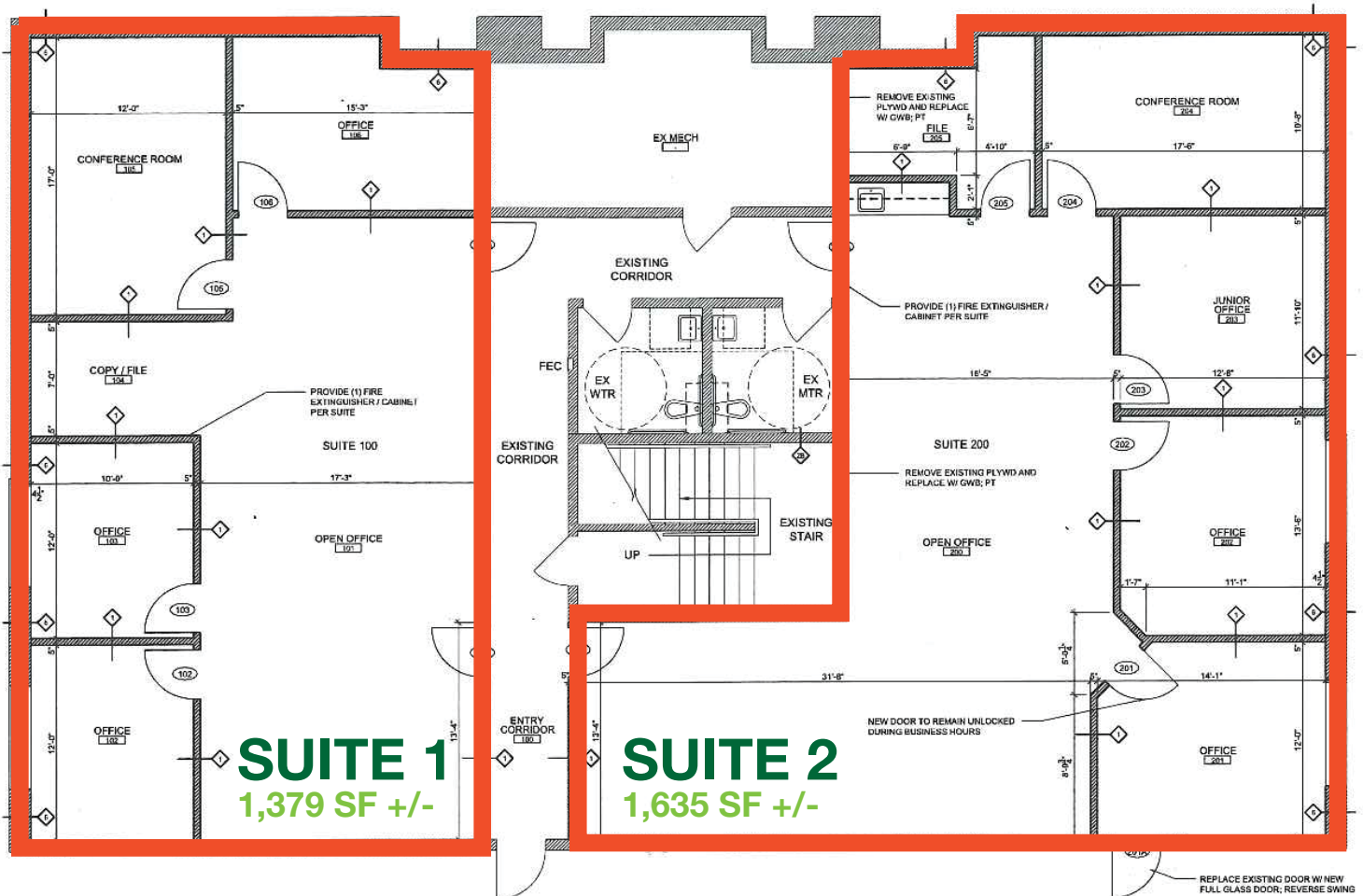
101 S. Reid Street | Ste. 201 | Sioux Falls, SD 57103
Information deemed reliable, but not guaranteed.



LLOYD
COMPANIES

SILVER MAPLE OFFICE BUILDING

GARDEN LEVEL SPACE AVAILABLE



RAQUEL BLOUNT, SIOR
605 728-9092
raquel@lloydcompanies.com

FLOOR PLAN

Concept plan only; subject to change



LLOYD
COMPANIES

SILVER MAPLE OFFICE BUILDING

GARDEN LEVEL SPACE AVAILABLE



RAQUEL BLOUNT, SIOR
605 728-9092
raquel@lloydcompanies.com

PROPERTY IMAGES

101 S. Reid Street | Ste. 201 | Sioux Falls, SD 57103
Information deemed reliable, but not guaranteed.