



MARK BOTTLES
REAL ESTATE SERVICES

Office Space For Lease 2560 N. Stokesberry Place

Meridian, Idaho 83646



PROPERTY INFORMATION:

Available Space:	± 2,180 SF
Year Built:	2015
Zoning:	L-O
Frontage:	Eagle Rd
Price:	\$15/SF NNN

COMMENTS:

- Located in the Stokesberry Business Park
- Great visibility off of Eagle Road
- Eagle Road traffic counts: 52,916 VPD
- Landlord to provide TI allowance for buildout
- \$35,000 TI's with a 5 year lease

RYAN BRODIEN

Cell: (208) 830-8070
Office: (208) 947-1078
ryan@markbottles.com

NORM BROWN

Cell: (208) 866-2450
Office: (208) 947-1086
norm@markbottles.com

839 S. Bridgeway Place
Eagle, Idaho

P(208) 377-5700 F(208) 377-0035

www.markbottles.com



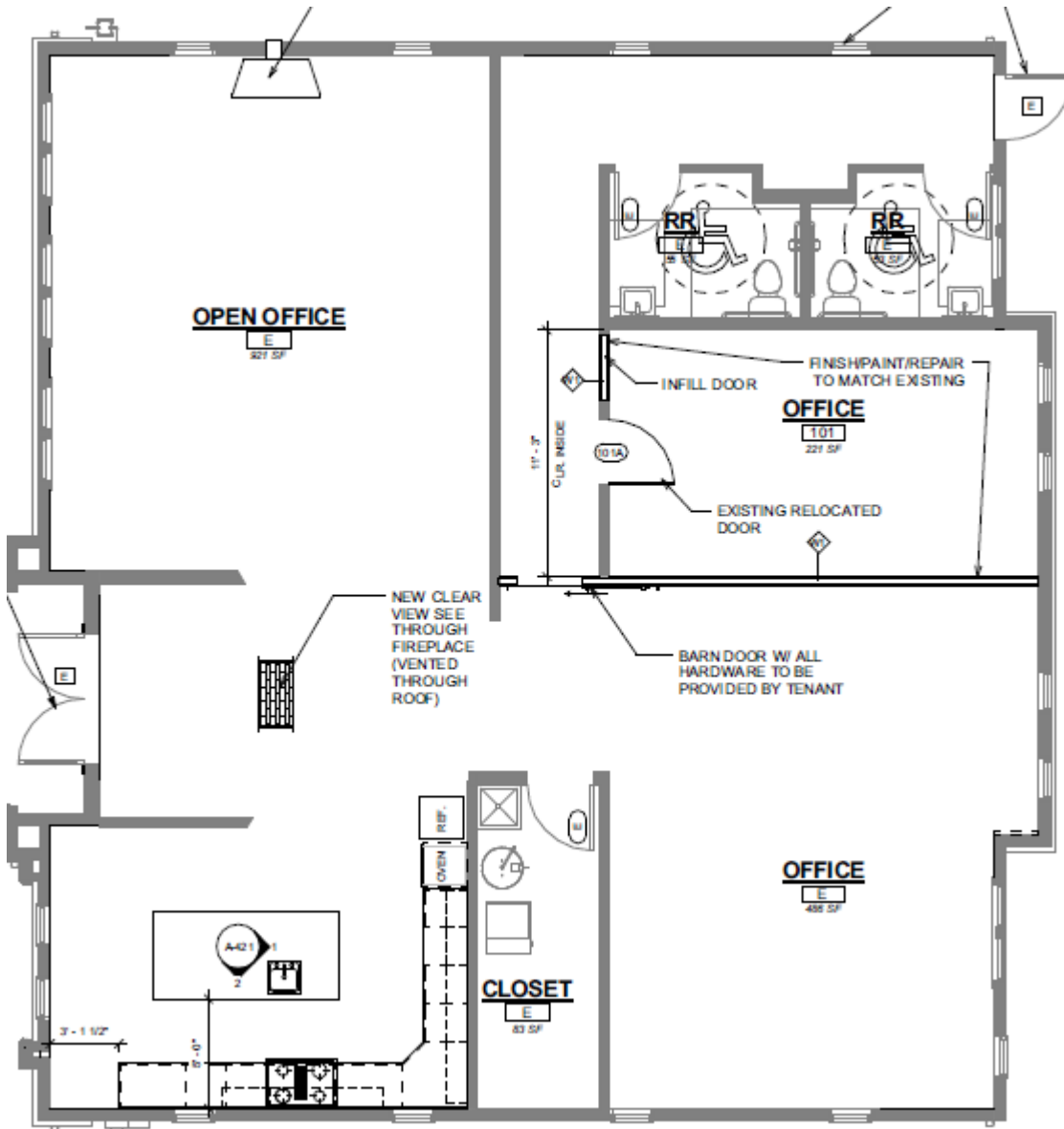
MARK BOTTLES
REAL ESTATE SERVICES

Office Space For Lease

2560 N. Stokesberry Place

Meridian, Idaho 83646

Site Plan:



RYAN BRODIEN

Cell: (208) 830-8070
Office: (208) 947-1078
ryan@markbottles.com

NORM BROWN

Cell: (208) 866-2450
Office: (208) 947-1086
norm@markbottles.com

839 S. Bridgeway Place
Eagle, Idaho
P(208) 377-5700 F(208) 377-0035
www.markbottles.com



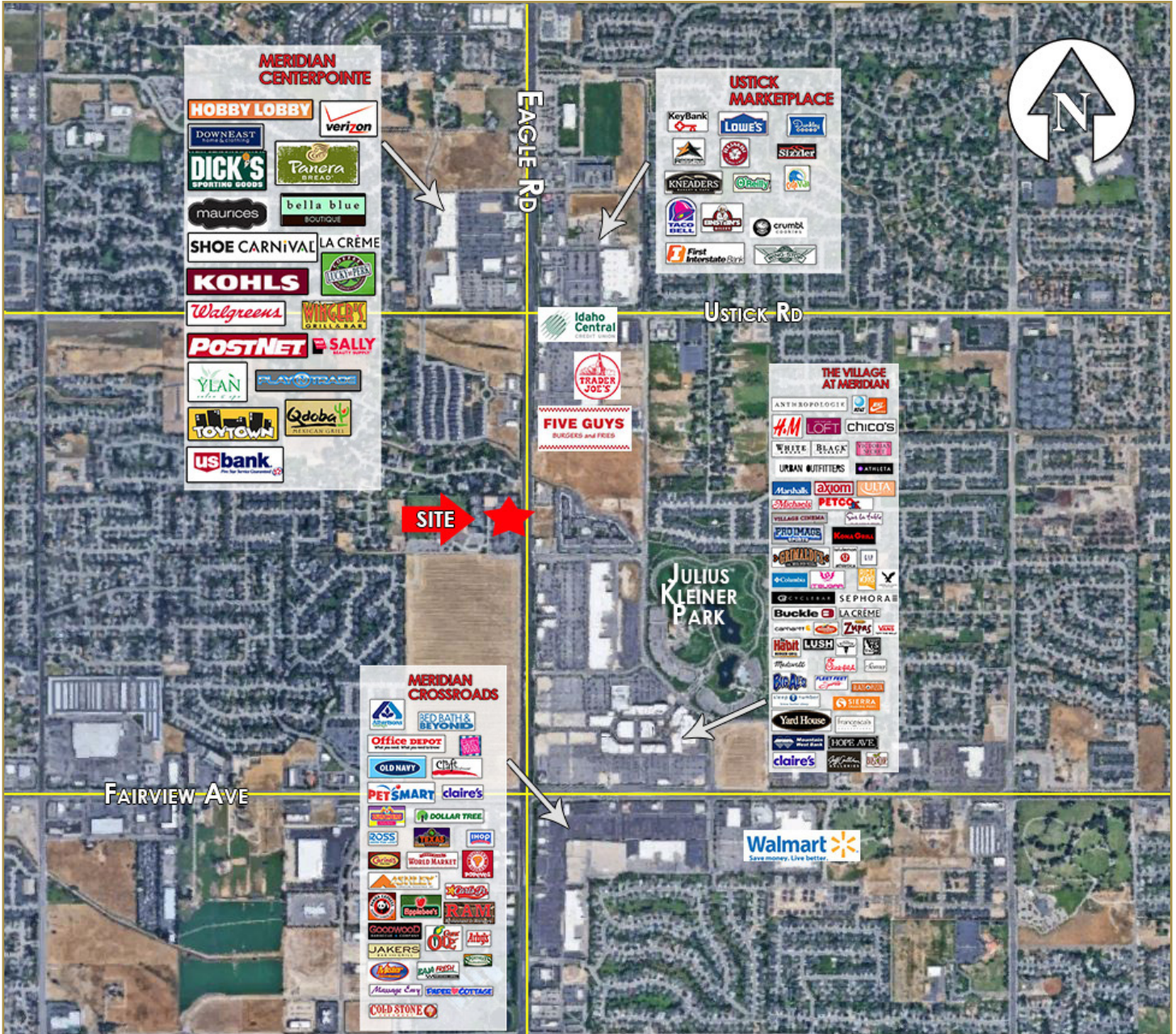
MARK BOTTLES
REAL ESTATE SERVICES

Office Space For Lease

2560 N. Stokesberry Place

Meridian, Idaho 83646

Wide Aerial:



RYAN BRODIEN

Cell: (208) 830-8070
Office: (208) 947-1078
ryan@markbottles.com

NORM BROWN

Cell: (208) 866-2450
Office: (208) 947-1086
norm@markbottles.com

839 S. Bridgeway Place

Eagle, Idaho

P(208) 377-5700 F(208) 377-0035

www.markbottles.com

This information, while not guaranteed, is from sources we believe to be reliable. This data is subject to price change, corrections, errors, omissions, prior sale, and/or withdrawal.

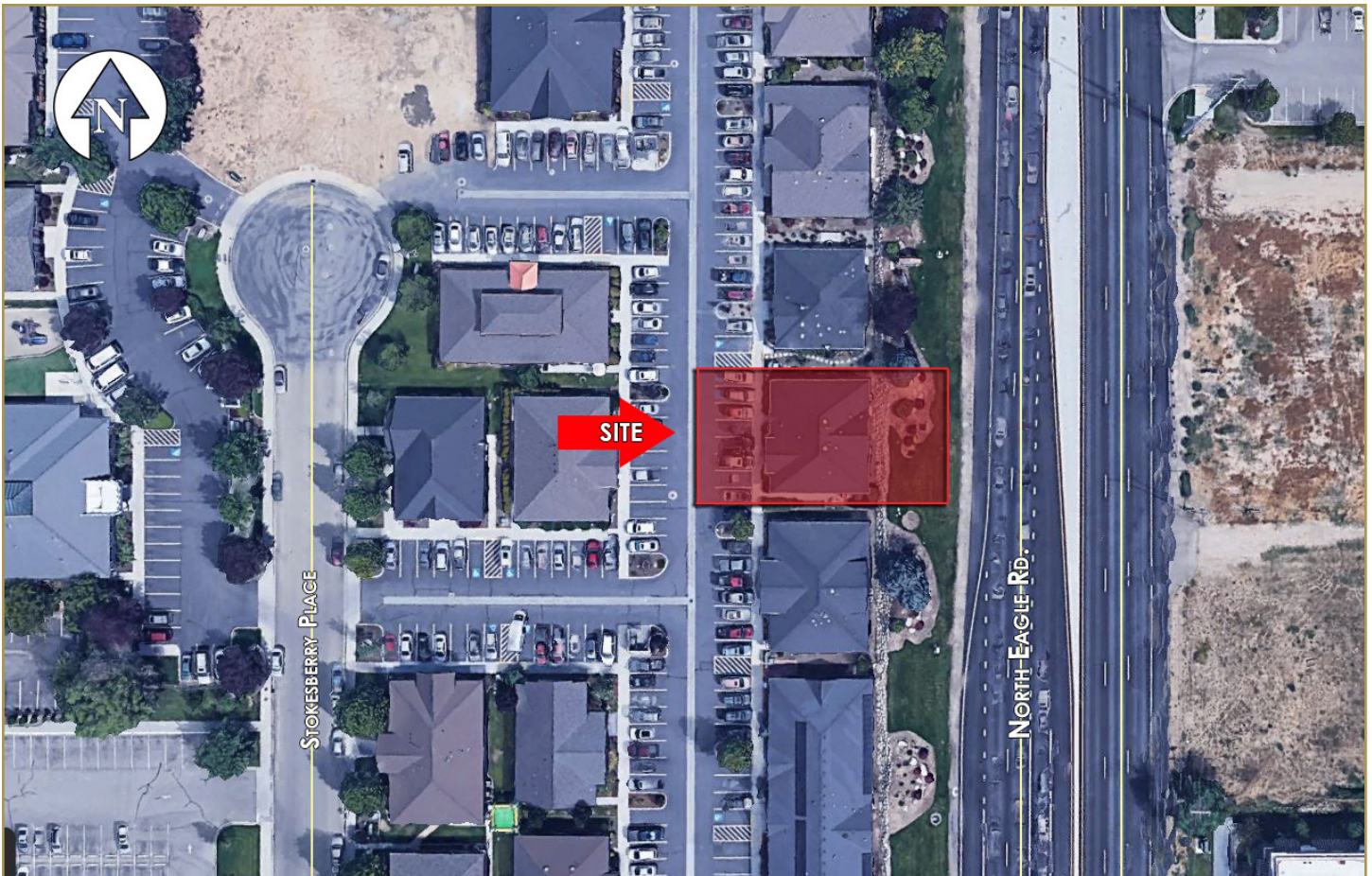


MARK BOTTLES
REAL ESTATE SERVICES

Office Space For Lease
2560 N. Stokesberry Place

Meridian, Idaho 83646

Close Aerial:



RYAN BRODIEN

Cell: (208) 830-8070
Office: (208) 947-1078
ryan@markbottles.com

NORM BROWN

Cell: (208) 866-2450
Office: (208) 947-1086
norm@markbottles.com

839 S. Bridgeway Place
Eagle, Idaho

P(208) 377-5700 F(208) 377-0035

www.markbottles.com

This information, while not guaranteed, is from sources we believe to be reliable. This data is subject to price change, corrections, errors, omissions, prior sale, and/or withdrawal.