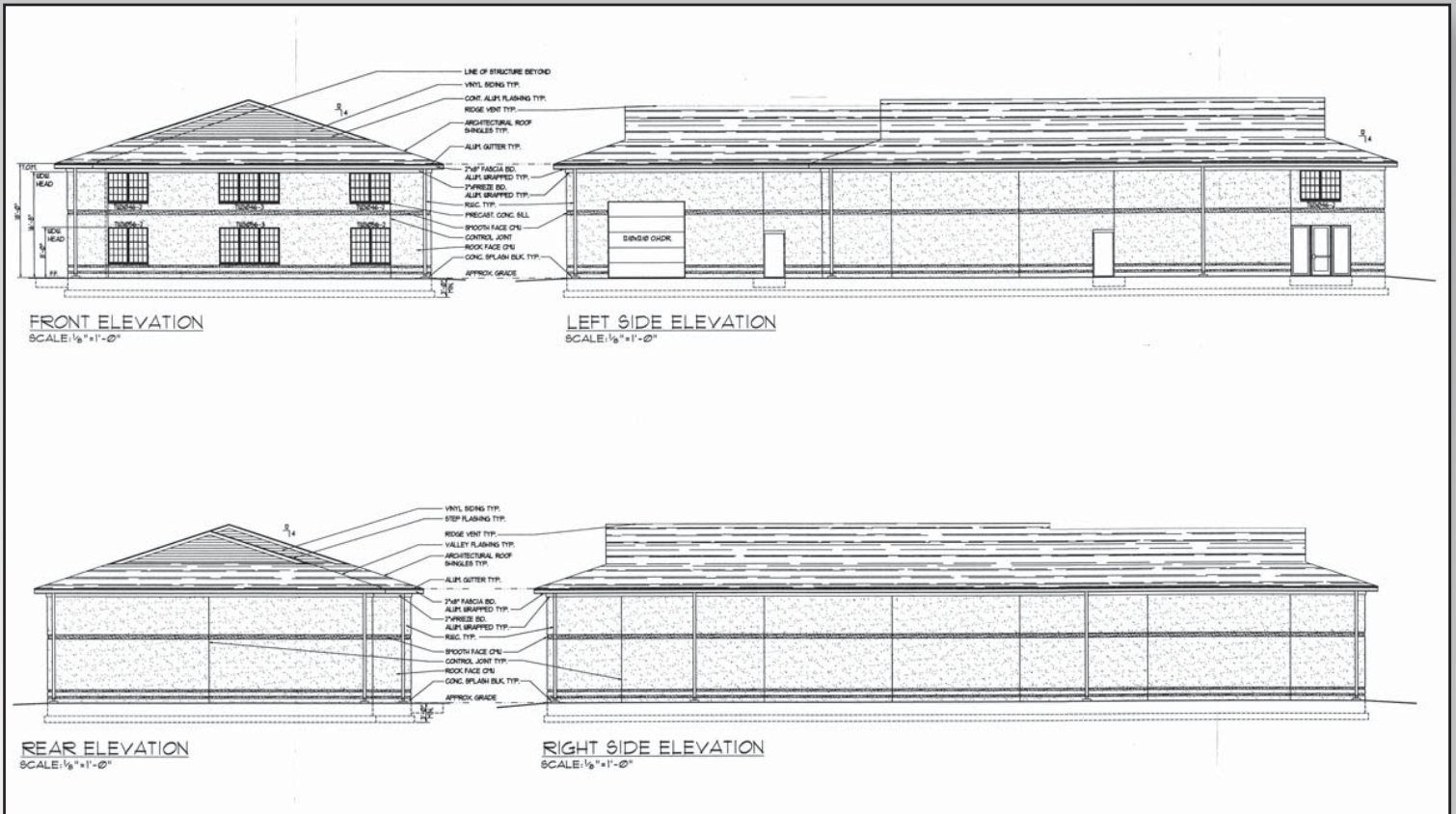




# INDUSTRIAL LAND FOR SALE

9 Red Lion Road | Southampton | 08088 | Burlington County | New Jersey



2.28 acres of industrial space available for sale

Fully approved for 7,000 SF of flex space, 1,000 SF of office space and 6,000 SF of warehouse space

**Approved for  
7,000 SF Flex Space**

Great location near Rt. 70 & Rt. 206

Ideal for many uses

### DEMOGRAPHICS (\*)

	1 Mile	3 Miles	5 Miles
Population	<b>11,096</b>	<b>37,277</b>	<b>72,972</b>
Average HH Income	<b>\$87,904</b>	<b>\$ 113,089</b>	<b>\$108,275</b>
Total Businesses	<b>377</b>	<b>1,600</b>	<b>2,802</b>
Number of Employees	<b>2,690</b>	<b>12,196</b>	<b>28,179</b>

\* Data Source: ESRI <sup>TM</sup>

### CONTACT:

**Bill Minnick**

billm@arrowrealestateservices.com

609.744.5737

Corporate Headquarters  
555 Building, Bala Cynwyd, PA  
Administrative Office  
717 Limekiln Road, Doylestown, PA 18901

**arrowrealestateservices.com**



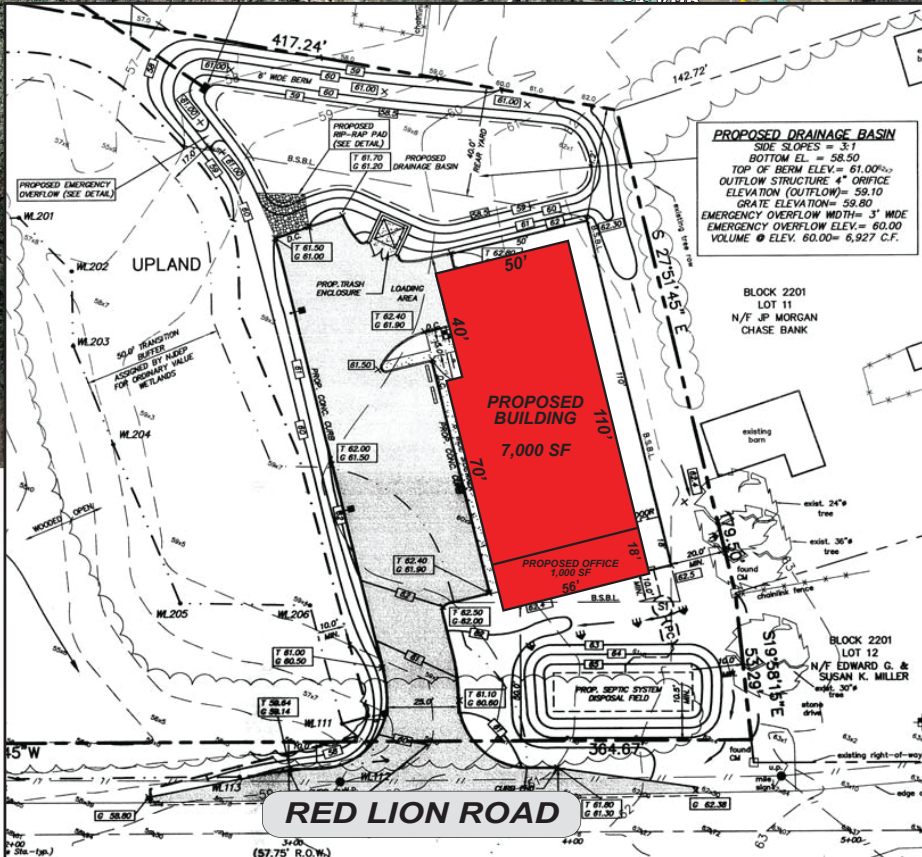
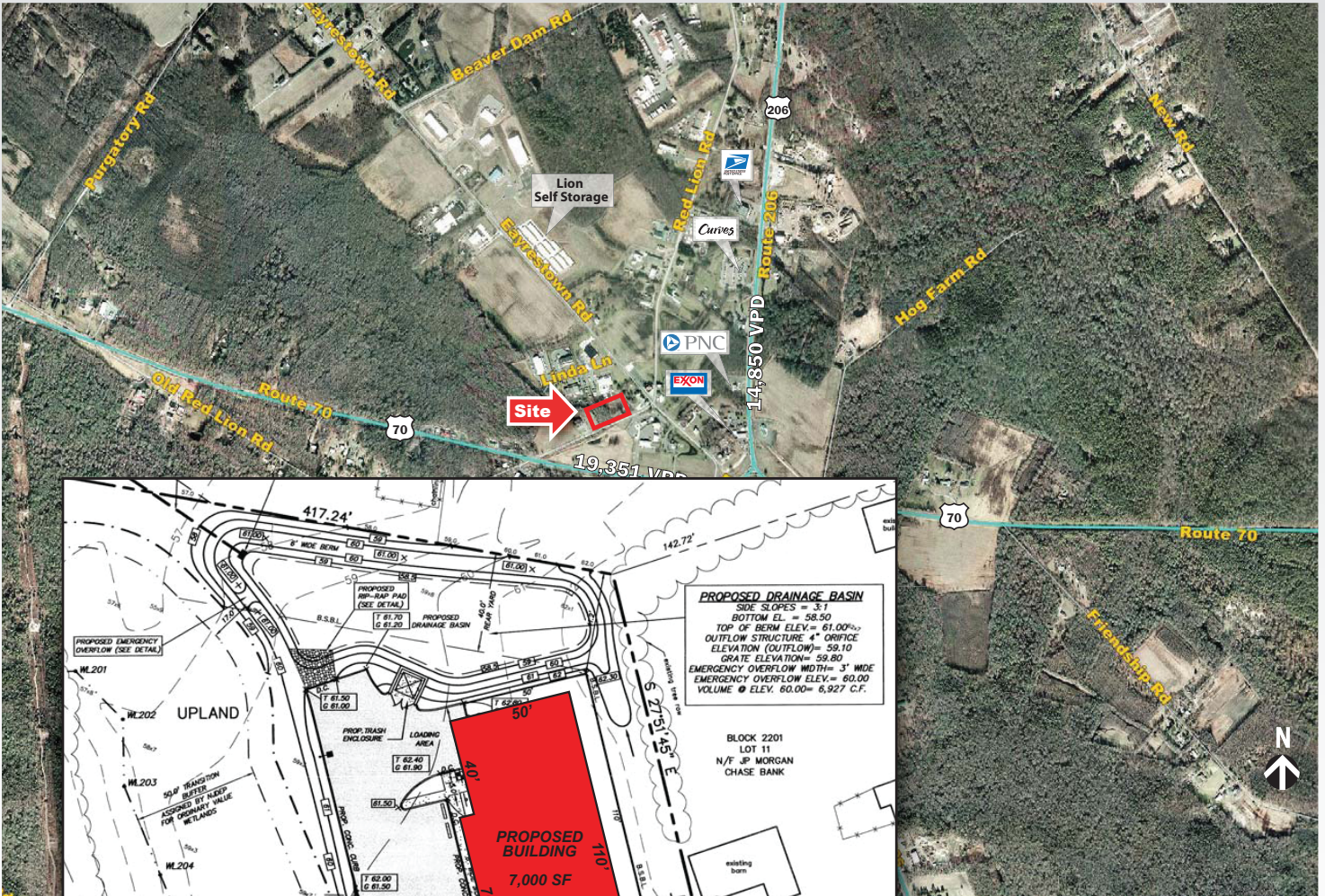


# ARROW

## Real Estate Services

### INDUSTRIAL LAND FOR SALE

9 Red Lion Road | Southampton | 08088 | Burlington County | New Jersey



te Services

**CONTACT:**  
**Bill Minnick**  
billm@arrowrealestateservices.com  
609.744.5737

Information contained herein has been obtained from the Owner of the Property or from sources deemed reliable. We have no reason to doubt its accuracy but make no warranty or representation. All information is submitted subject to errors, omissions, changes, withdrawal without notice and any special listing conditions of the Owner. 2 0 1 2

Corporate Headquarters  
555 Building, Bala Cynwyd, PA  
Administrative Office  
717 Limekiln Road, Doylestown, PA 18901

[arrowrealestateservices.com](http://arrowrealestateservices.com)

