

# 9707 East Easter Lane

Centennial, Colorado



## Office/Flex for Lease in Excellent Southeast Location

As exclusive agents, we are pleased to offer the following space for lease:

### Office/Flex For Lease

#### Space Available:

10,200 SF

#### Lease Rate:

\$10.50/SF to \$13.50/SF

### Property Highlights

- ◆ Excellent location and access to I-25 via Dry Creek Road.
- ◆ Convenient access to Light Rail and an abundance of amenities.
- ◆ Currently 100% finished space. Blend of open and private office with 9'9" high drop ceiling
- ◆ Dock High loading potential
- ◆ On building and monument signage
- ◆ MU-PUD zoning
- ◆ Abundant parking available

**Keith Bell** 303.260.4332 [kbell@ngkf.com](mailto:kbell@ngkf.com)

**Dave Lee** 303.260.4349 [dlee@ngkf.com](mailto:dlee@ngkf.com)

**Jason Addlesperger** 303.260.4342 [jaddlesperger@ngkf.com](mailto:jaddlesperger@ngkf.com)

**Newmark  
Knight Frank**

1800 Larimer Street, Suite 1700, Denver, Colorado 80202

[www.ngkf.com](http://www.ngkf.com)

Procuring broker shall only be entitled to a commission, calculated in accordance with the rates approved by our principal only if such procuring broker executes a brokerage agreement acceptable to us and our principal and the conditions as set forth in the brokerage agreement are fully and unconditionally satisfied. Although all information furnished regarding property for sale, rental, or financing is from sources deemed reliable, such information has not been verified and no express representation is made nor is any to be implied as to the accuracy thereof and it is submitted subject to errors, omissions, change of price, rental or other conditions, prior sale, lease or financing, or withdrawal without notice and to any special conditions imposed by our principal.

# 9707 East Easter Lane

Centennial, Colorado



Office/Flex For Lease

## ◆ Details

**Space Available:** 10,200 SF

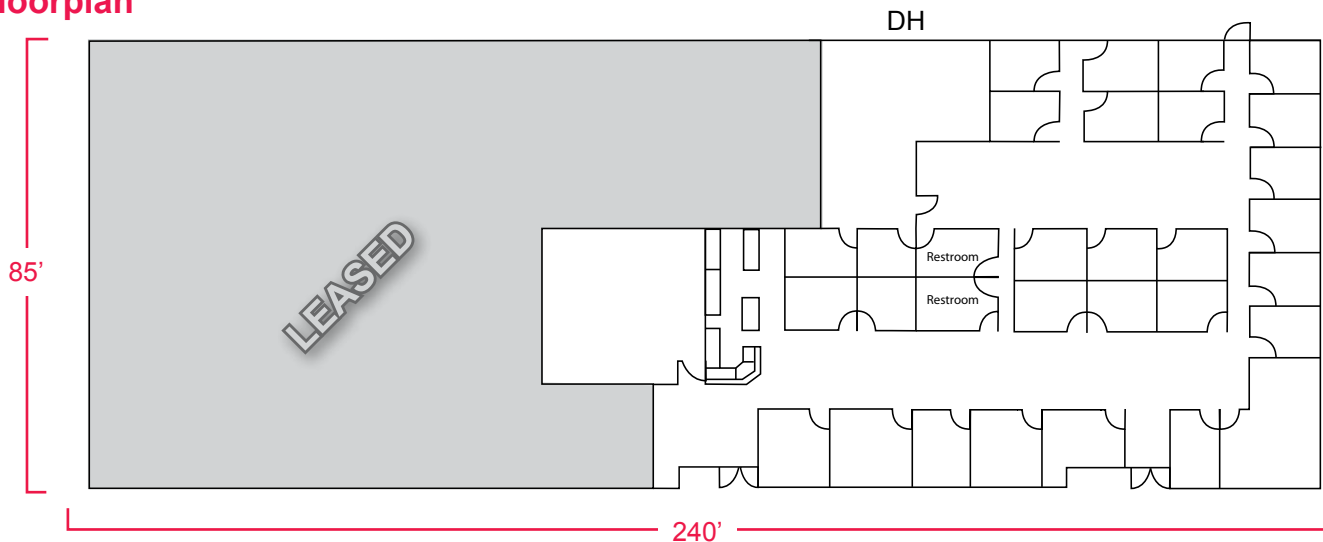
**Lease Rate:** \$10.50/SF-\$13.50/SF

**Operating Expense:** \$5.11/SF (estimate)

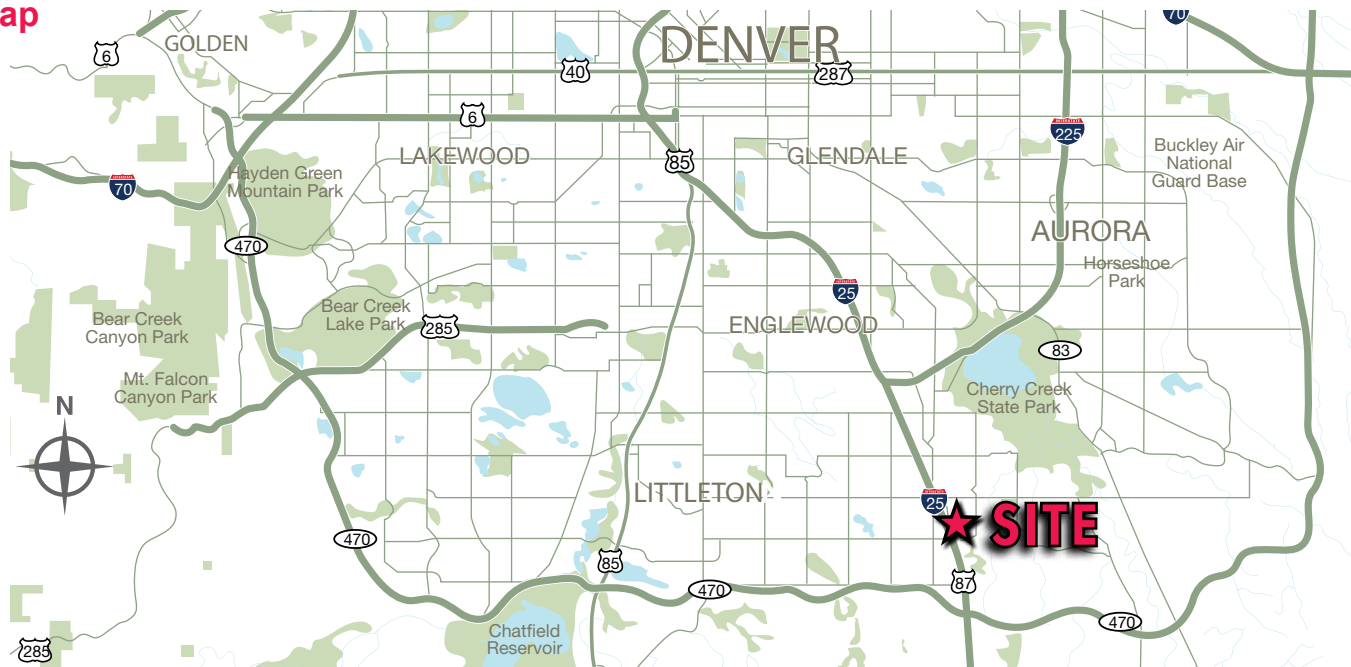
**Loading:** Dock High (potential)

**Building Size:** 20,400 SF

## ◆ Floorplan



## ◆ Map



**Newmark  
Knight Frank**

**Keith Bell** 303.260.4332 [kbell@ngkf.com](mailto:kbell@ngkf.com)

**Dave Lee** 303.260.4349 [dlee@ngkf.com](mailto:dlee@ngkf.com)

**Jason Addlesperger** 303.260.4342 [jaddlesperger@ngkf.com](mailto:jaddlesperger@ngkf.com)