



1300 Gum Branch Rd, Jacksonville, NC 28540

\$14.86/SF/YR

\$1.24/SF/MO

1300 Gum Branch Rd Unit A

Office | 1 space available | 4,200 sq. ft.



William Sanders
NC 232310
910.265.1799

Listing Added: 06/01/2023

Listing Updated: 06/01/2023



Building Details

Property Type	Office
Subtype	Traditional Office, Executive Office, Creative Office, Coworking
Tenancy	Multiple
Total Building SQFT	7,740
Land Acres	1.55
Year Built	1986
Year Renovated	2020
Buildings	1
Stories	1
Zoning	CC
APN	414-7.29
County	Onslow County

Building Description

4200 sft office space available now. In 2020 following updates were completed: fresh paint inside & out, new flooring, updated lights, new windows and repainted the parking lot. Unit "A" has multiple offices, 2 bathrooms, kitchen, 2 huge rooms that will make great conference rooms, classrooms or bull pin. Off the back you will have a small warehouse space. 3 year lease required. Call today for your VIP tour.

Building Highlights

4200 sft office space available now. In 2020 following updates were completed: fresh paint inside & out, new flooring, updated lights, new windows and repainted the parking lot. Unit "A" has multiple offices, 2 bathrooms, kitchen, 2 huge rooms that will make great conference rooms, classrooms or bull pin. Off the back you will have a small warehouse space. 3 year lease required. Call today for your VIP tour.

Building Location (1 Location)

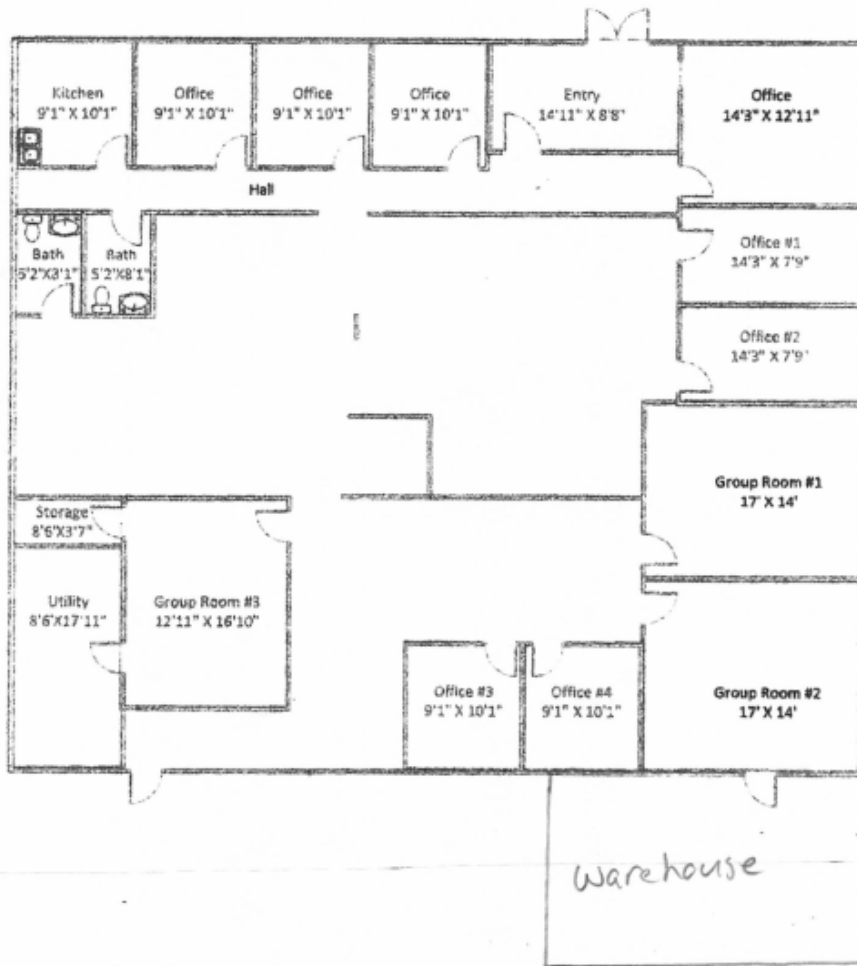


Available Space 1 Details

4200 sft office space available now. In 2020 following updates were completed: fresh paint inside & out, new flooring, updated lights, new windows and repainted the parking lot. Unit "A" has multiple offices, 2 bathrooms, kitchen, 2 huge rooms that will make great conference rooms, classrooms or bull pin. Off the back you will have a small warehouse space. 3 year lease required. Call today for your VIP tour.

Listing Type	Direct
Space Subtype	Traditional Office,Executive Office,Creative Office,Coworking
RSF	4,200 SF
USF	4,200 SF
Space Available	2023-07-02T03:59:59.999Z
Rate (Per SF)	\$14.86 / SF / YR
Lease Type	NNN
Total Rate (Per SF/YR)	\$14.86
Total Monthly Rent	\$5,200.86
Days on Market	0 days

Front





Demographic Insights



Unlock full access to Insights

Subscribe to Crexi Intelligence for full access

[Subscribe](#)

[Sign In to View](#)

We don't currently have any Population insights for your specified search.

Try zooming out on the map.

Household Income



Age Demographics



Number of Employees



Housing Occupancy Ratio

Renter to Homeowner Ratio

Print Page